

2340 LONGARD PLAZA

Halifax, Nova Scotia

+/- 1,673 SF COMMERCIAL SPACE AVAILABLE FOR LEASE



Alec Cranston / Senior Associate / acranston@cwatlantic.com / +1 902 789 2477

Head Office / 170 Cromarty Drive, Suite 205 / Dartmouth, NS B3B 0G1 / +1 902 425 1444



©2026 Cushman & Wakefield. All rights reserved. The information contained in this communication is strictly confidential. This information has been obtained from sources believed to be reliable but has not been verified. NO WARRANTY OR REPRESENTATION, EXPRESS OR IMPLIED, IS MADE AS TO THE CONDITION OF THE PROPERTY (OR PROPERTIES) REFERENCED HEREIN OR AS TO THE ACCURACY OR COMPLETENESS OF THE INFORMATION CONTAINED HEREIN, AND SAME IS SUBMITTED SUBJECT TO ERRORS, OMISSIONS, CHANGE OF PRICE, RENTAL OR OTHER CONDITIONS, WITHDRAWAL WITHOUT NOTICE, AND TO ANY SPECIAL LISTING CONDITIONS IMPOSED BY THE PROPERTY OWNER(S). ANY PROJECTIONS, OPINIONS OR ESTIMATES ARE SUBJECT TO UNCERTAINTY AND DO NOT SIGNIFY CURRENT OR FUTURE PROPERTY PERFORMANCE.

CWATLANTIC.COM

2340 LONGARD PLAZA

Halifax, Nova Scotia

OVERVIEW

+/- 1,673 SF COMMERCIAL SPACE AVAILABLE FOR LEASE

THE OPPORTUNITY

2340 Longard Plaza offers approximately 1,673 SF of commercial space within the Harbour View Apartments community in Halifax's North End. Positioned within an established residential neighbourhood and minutes from Downtown Halifax, the property presents an opportunity for a variety of retail, service, or commercial users seeking a well-connected urban location.

PROPERTY HIGHLIGHTS

- Approximately 1,673 SF of street-level commercial space.
- Existing retail fixtures and shelving remain in place.
- Refrigeration infrastructure and cold storage areas are already installed.
- Open-concept layout supports a variety of commercial uses.
- Located within the Harbour View Apartments residential community.
- Large storefront windows provide natural light and visibility.
- Minutes from Downtown Halifax and the Macdonald Bridge.
- Convenient access to transit, neighbourhood amenities, and major employment centres.

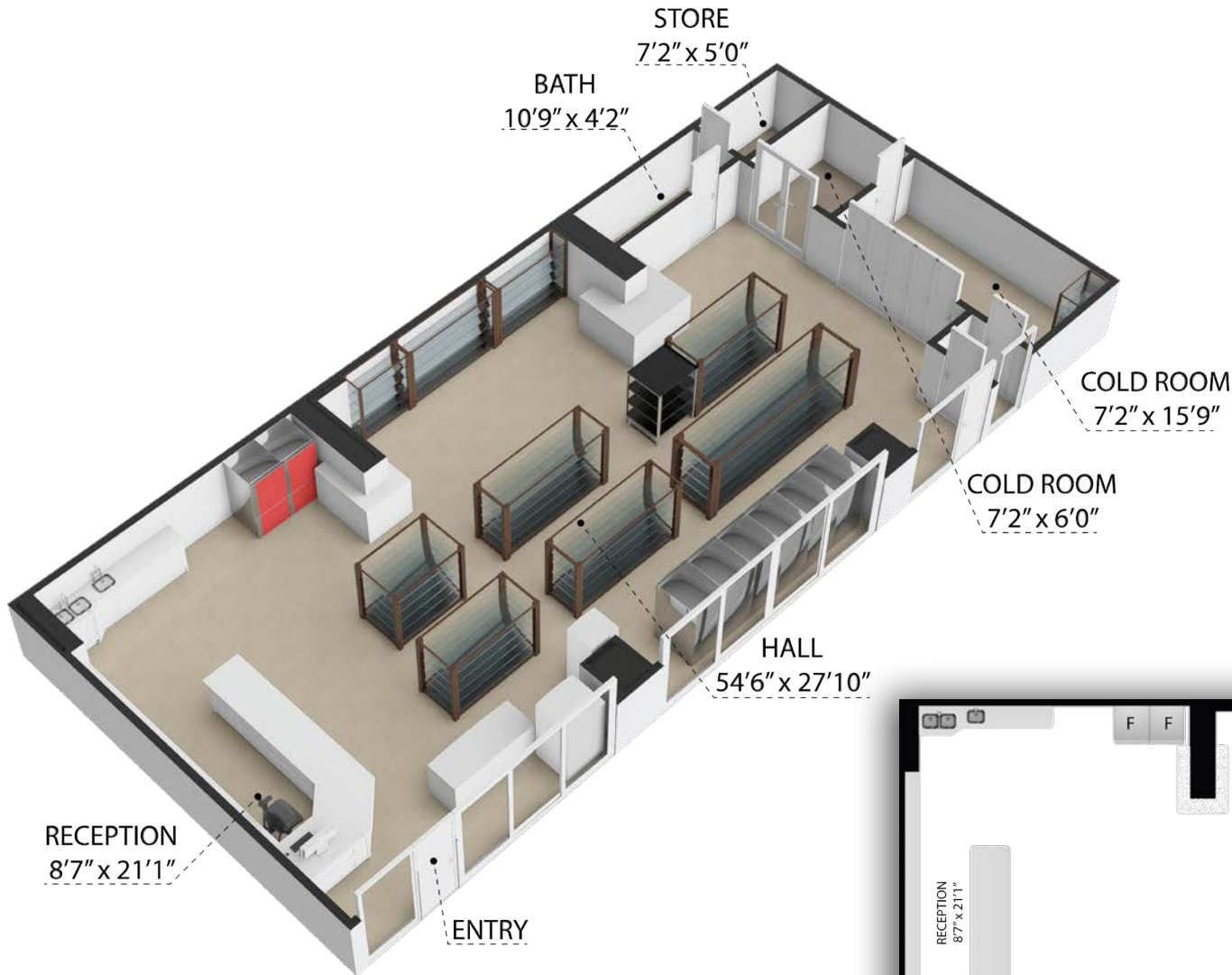


2340 LONGARD PLAZA

Halifax, Nova Scotia

FLOOR PLAN

+/- 1,673 SF COMMERCIAL SPACE AVAILABLE FOR LEASE



RECEPTION
8'7" x 21'1"

ENTRY

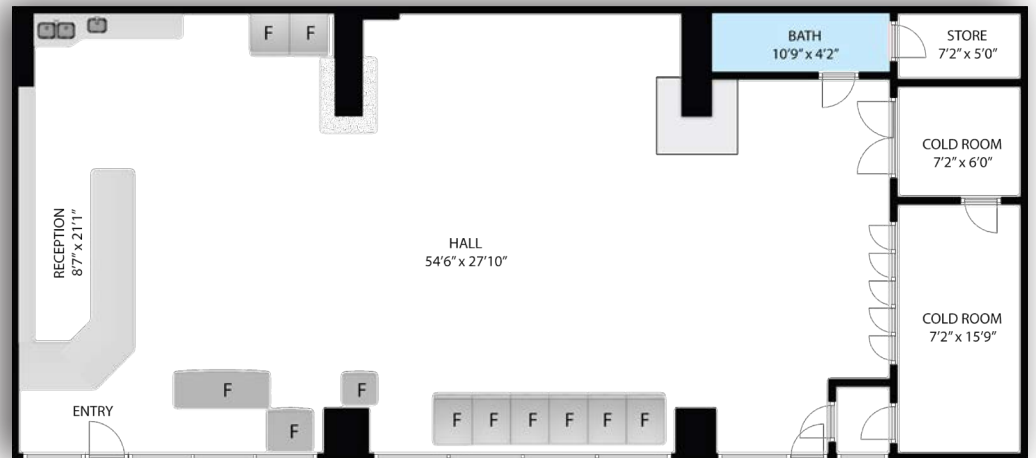
STORE
7'2" x 5'0"

BATH
10'9" x 4'2"

COLD ROOM
7'2" x 15'9"

COLD ROOM
7'2" x 6'0"

HALL
54'6" x 27'10"



BATH
10'9" x 4'2"

STORE
7'2" x 5'0"

COLD ROOM
7'2" x 6'0"

COLD ROOM
7'2" x 15'9"

HALL
54'6" x 27'10"

RECEPTION
8'7" x 21'1"

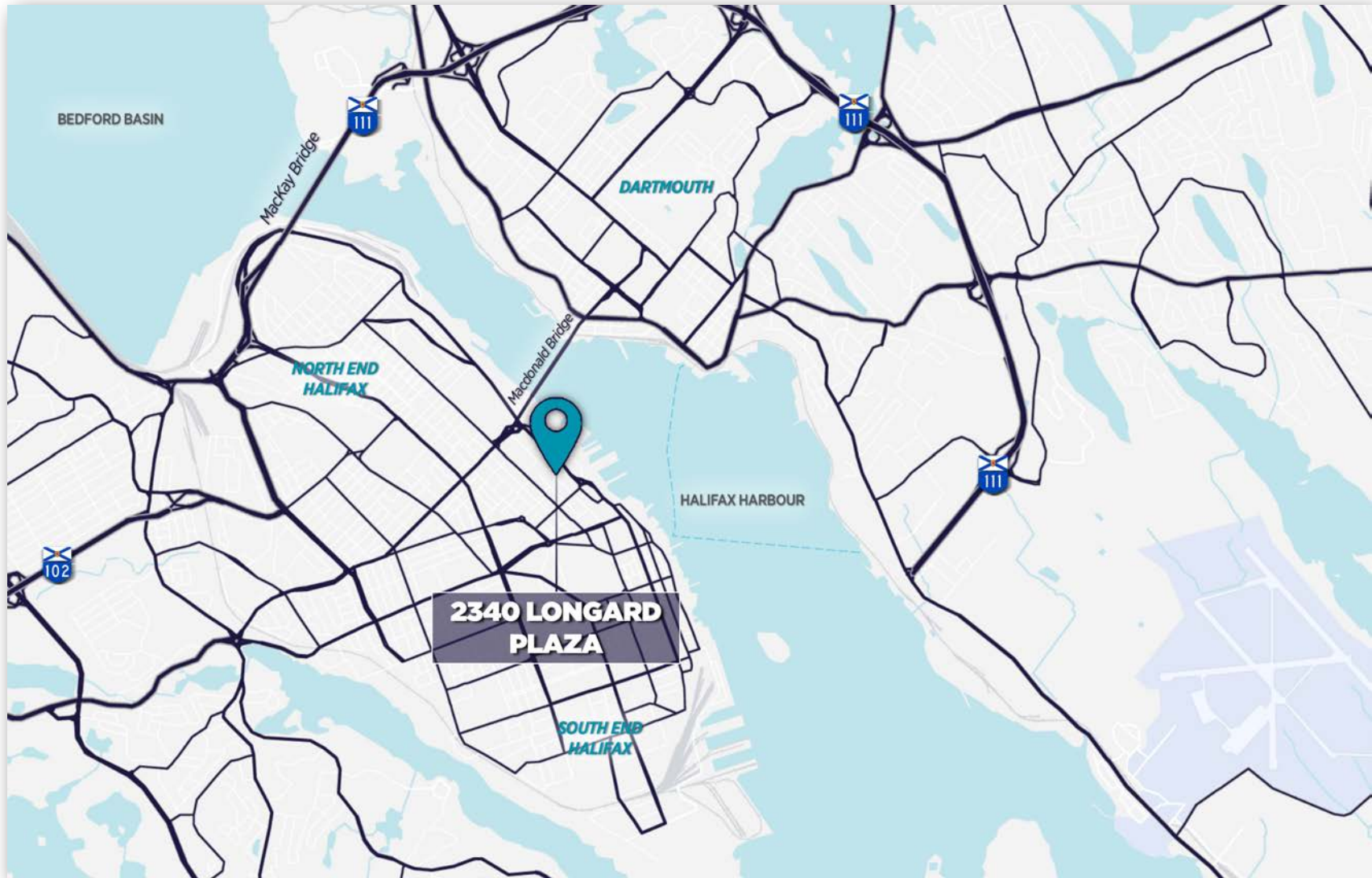
ENTRY

2340 LONGARD PLAZA

Halifax, Nova Scotia

LOCATION MAP

+/- 1,673 SF COMMERCIAL SPACE AVAILABLE FOR LEASE

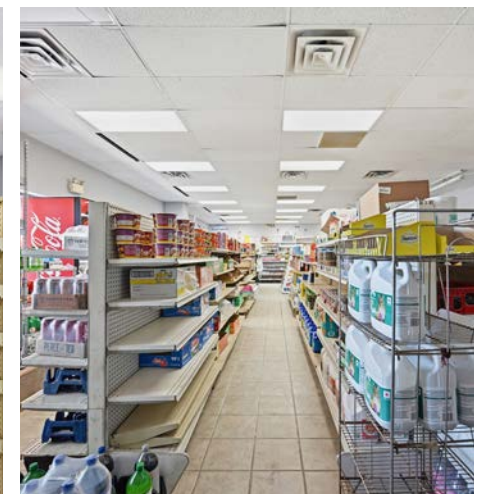
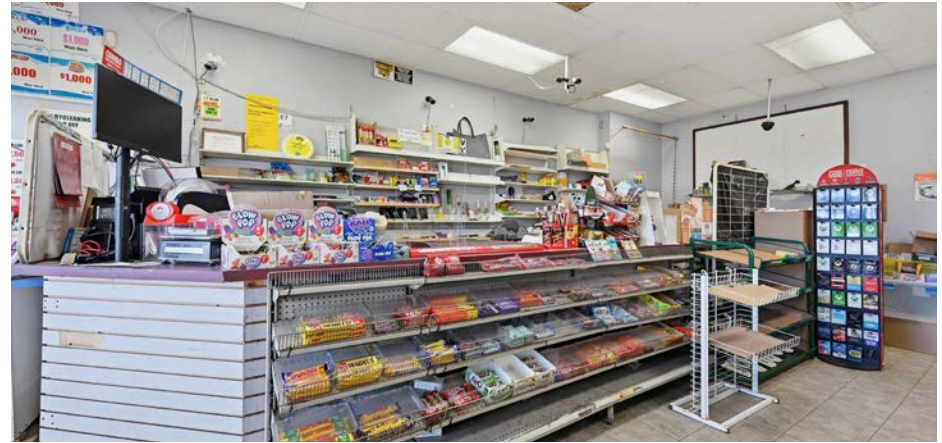


2340 LONGARD PLAZA

Halifax, Nova Scotia

PHOTOS

+/- 1,673 SF COMMERCIAL SPACE AVAILABLE FOR LEASE



2340 LONGARD PLAZA

Halifax, Nova Scotia

+/- 1,673 SF COMMERCIAL SPACE AVAILABLE

Alec Cranston / Senior Associate / acranston@cwatlantic.com / +1 902 789 2477

Head Office / 170 Cromarty Drive, Suite 205 / Dartmouth, NS B3B 0G1 / +1 902 425 1444

CWATLANTIC.COM



©2026 Cushman & Wakefield. All rights reserved. The information contained in this communication is strictly confidential. This information has been obtained from sources believed to be reliable but has not been verified. NO WARRANTY OR REPRESENTATION, EXPRESS OR IMPLIED, IS MADE AS TO THE CONDITION OF THE PROPERTY (OR PROPERTIES) REFERENCED HEREIN OR AS TO THE ACCURACY OR COMPLETENESS OF THE INFORMATION CONTAINED HEREIN, AND SAME IS SUBMITTED SUBJECT TO ERRORS, OMISSIONS, CHANGE OF PRICE, RENTAL OR OTHER CONDITIONS, WITHDRAWAL WITHOUT NOTICE, AND TO ANY SPECIAL LISTING CONDITIONS IMPOSED BY THE PROPERTY OWNER(S). ANY PROJECTIONS, OPINIONS OR ESTIMATES ARE SUBJECT TO UNCERTAINTY AND DO NOT SIGNIFY CURRENT OR FUTURE PROPERTY PERFORMANCE.