

F
E
B

2
0
2
6

MONTHLY LISTINGS REPORT

NEWFOUNDLAND &
LABRADOR

Better never settles

Photo by Frederick Wallace



**WE
DIDN'T
COME
THIS FAR
JUST TO
COME
THIS FAR.**

FOR LEASE

OFFICE SPACE



INDUSTRIAL SPACE



COMMERCIAL SPACE





01

OFFICE SPACE FOR LEASE

OFFICE SPACE

FOR LEASE

PROPERTIES
FOR SALE 



**6 MOUNT CARSON AVENUE
DORSET BUILDING**
MOUNT PEARL

Modern 3-storey building with elevator and ample parking.

Size	2,112 sf
Price	\$18.00 psf
Agent(s)	Joanne Earle



**15 HALLETT CRESCENT
CHEEMA BUILDING**
ST. JOHN'S

Accessible office in well situated building in O'Leary Industrial Park

Size	Various Suites
Price	\$12.00 psf Net
Agent(s)	Joanne Earle



02

INDUSTRIAL SPACE

FOR LEASE

INDUSTRIAL SPACE

FOR LEASE



PROPERTIES
FOR SALE 



2 BRUCE STREET FLEX INDUSTRIAL MOUNT PEARL

4.0 acres of industrial storage land available within the Burnside Business Park.

Size:
7,502 sf

Price:
Please Contact

Advisor:
Joanne Earle

**WE
DIDN'T
COME
THIS FAR
JUST TO
COME
THIS FAR.**

**FOR
SALE**

INDUSTRIAL PROPERTIES



LAND PROPERTIES



COMMERCIAL PROPERTIES





01

INDUSTRIAL PROPERTIES FOR SALE

INDUSTRIAL PROP.

FOR SALE



MUR PROPERTIES



INDUSTRIAL PROPERTIES



LAND PROPERTIES



COMMERCIAL PROPERTIES

SPACES
FOR LEASE



2 BRUCE STREET INVESTMENT PROPERTY MOUNT PEARL

Prime industrial property in the
Donovan's Industrial Park

Size	33,847 sf
Price	Please Contact
Agent(s)	Joanne Earle



02

LAND PROPERTIES

FOR SALE

LAND PROPERTIES

FOR SALE

SPACES FOR LEASE 



MUR PROPERTIES



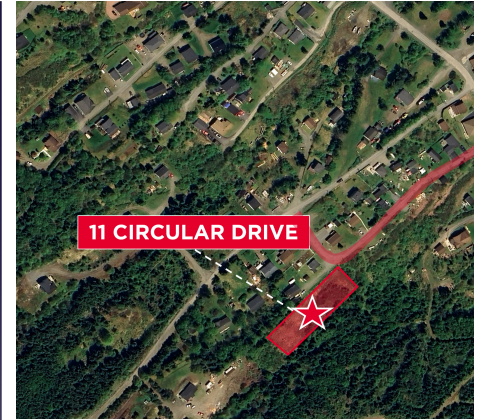
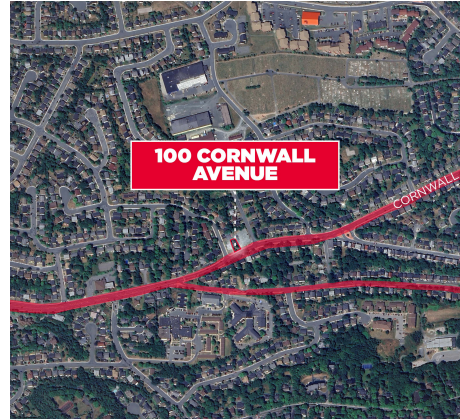
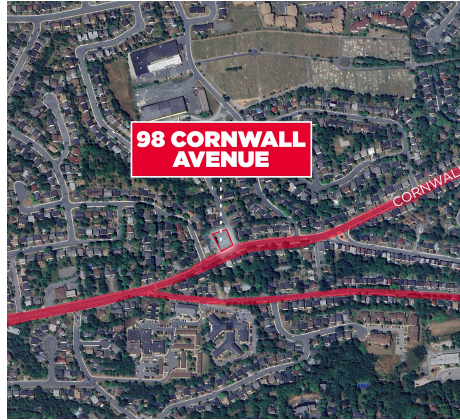
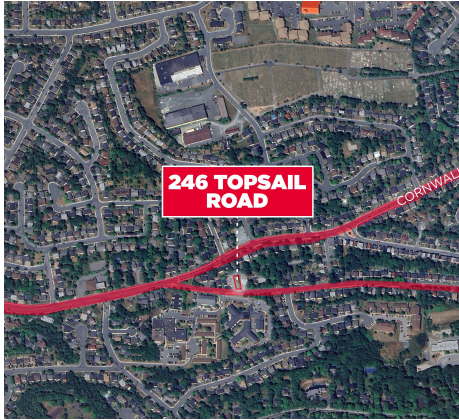
INDUSTRIAL PROPERTIES



LAND PROPERTIES



COMMERCIAL PROPERTIES



246 TOPSAIL ROAD RESIDENTIAL LAND ST. JOHN'S

Vacant land along Topsail Road with Residential zoning (R1)

Size	5,581 sf
Price	Please Contact
Agent(s)	Joanne Earle

98 CORNWALL AVENUE VACANT LAND ST. JOHN'S

Vacant development land with R2 zoning (Residential)

Size	15,383 sf
Price	Please Contact
Agent(s)	Joanne Earle

100 CORNWALL AVENUE VACANT LAND ST. JOHN'S

Residential land with existing dwelling on-site

Size	5,047 sf
Price	Please Contact
Agent(s)	Joanne Earle

610 WATER STREET COMMERCIAL LAND ST. JOHN'S

Prime commercial land available in St. John's, moments from downtown

Size	27,251 sf
Price	Please Contact
Agent(s)	Joanne Earle

11 CIRCULAR DRIVE COMMERCIAL LAND ST. ALBAN'S

Vacant commercial land in St. Alban's, zoned Mixed Development .

Size	2.25 Acres
Price	Please Contact
Agent(s)	Joanne Earle

LAND PROPERTIES

FOR SALE

SPACES FOR LEASE 



MUR PROPERTIES



INDUSTRIAL PROPERTIES



LAND PROPERTIES



COMMERCIAL PROPERTIES



206-212 VILLE MARIE DRIVE VACANT LAND MARYSTOWN

Vacant land in Marystown. Formerly used as a gas/service station

Size	1.06 Acres
Price	Please Contact
Agent(s)	Joanne Earle



1325-1331 TOPSAIL ROAD DEVELOPMENT OPPORTUNITY PARADISE

Development opportunity with a high profile location.

Size	1.12 Acres
Price	Please Contact
Agent(s)	Joanne Earle



727 KENMOUNT ROAD DEVELOPMENT LAND MOUNT PEARL

Large cleared lot and unserviced land for development. Panoramic views.

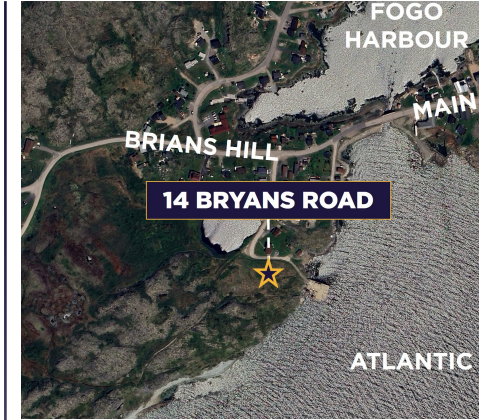
Size	6.85 Acres
Price	Please Contact
Agent(s)	Joanne Earle



12 MAGEE ROAD COMMERCIAL LAND GANDER

Vacant commercial development land with great visibility & frontage.

Size	1.18 Acres
Price	Please Contact
Agent(s)	Joanne Earle



14 BRYAN'S ROAD VACANT LAND FOGO ISLAND

Undeveloped vacant commercial land well positioned on Fogo Island.

Size	2.30 Acres
Price	Please Contact
Agent(s)	Joanne Earle

LAND PROPERTIES

FOR SALE



MUR PROPERTIES



INDUSTRIAL PROPERTIES



LAND PROPERTIES



COMMERCIAL PROPERTIES

SPACES
FOR LEASE



268 & 270 BLOW-ME-DOWN DRIVE COMMERCIAL LAND OLD PERLICAN

Commercial development land
in the village of Old Perlican.

Size	40,075 sf
Price	Please Contact
Agent(s)	Joanne Earle

OUR ADVISORS

NEWFOUNDLAND & LABRADOR



JOANNE EARLE
Associate Vice President
709 699 6832
jearle@cwatlantic.com



**NEWFOUNDLAND &
LABRADOR OFFICE**
351 Water Street
Suite 103A
St. John's, NL A1C 1C2
+1 709 576 3777
cwatlantic.com

Better never settles

MONTHLY LISTINGS REPORT

NEWFOUNDLAND &
LABRADOR

February 2026



**CUSHMAN &
WAKEFIELD**
Atlantic

Better never settles