

12

MAGEE ROAD

GANDER, NL

1.18 Acres
Vacant Land
For Sale



**CUSHMAN &
WAKEFIELD**
Atlantic

Better never settles



OVERVIEW

LOCATION: Gander, NL
ADDRESS: 12 MaGee Road
SITE AREA: 1.18 Acres
LIST PRICE: Please Contact

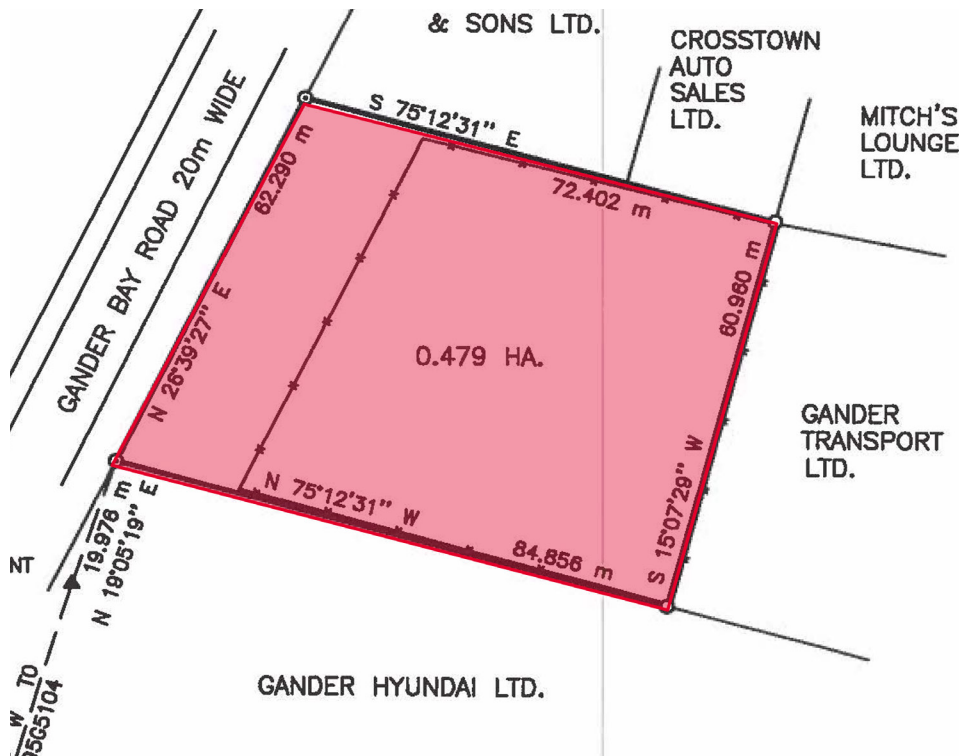
ZONING: CG
TAX ASSESSMENT: \$54,000

Location Information

Situated in the central hub of Gander, 12 Magee Road provides easy access to major amenities, including retail outlets, dining options, and essential services. Its prime location near the Trans-Canada Highway and Gander International Airport ensures excellent connectivity, while the surrounding area offers a mix of urban convenience and natural beauty, with opportunities for outdoor recreation nearby

Key Details

- 1.18 Acres of vacant commercial land available for sale in Gander, NL
- Situated on MaGee Road, offering significant visibility and frontage.
- Currently zoned commercial general (CG) allowing for a variety of commercial uses/developments.
- Well-positioned in an established industrial area with easy access to key transportation routes, and a robust community infrastructure.



12

MAGEE ROAD CONTACT

Joanne Earle

Associate Vice President

+1 706 699 6832

jearle@cwatlantic.com

NL Office

351 Water Street, Suite 103A

St. John's, NL A1C 1C2

cwatlantic.com

©2024 Cushman & Wakefield. All rights reserved. The information contained in this communication is strictly confidential. This information has been obtained from sources believed to be reliable but has not been verified. NO WARRANTY OR REPRESENTATION, EXPRESS OR IMPLIED, IS MADE AS TO THE CONDITION OF THE PROPERTY (OR PROPERTIES) REFERENCED HEREIN OR AS TO THE ACCURACY OR COMPLETENESS OF THE INFORMATION CONTAINED HEREIN, AND SAME IS SUBMITTED SUBJECT TO ERRORS, OMISSIONS, CHANGE OF PRICE, RENTAL OR OTHER CONDITIONS, WITHDRAWAL WITHOUT NOTICE, AND TO ANY SPECIAL LISTING CONDITIONS IMPOSED BY THE PROPERTY OWNER(S). ANY PROJECTIONS, OPINIONS OR ESTIMATES ARE SUBJECT TO UNCERTAINTY AND DO NOT SIGNIFY CURRENT OR FUTURE PROPERTY PERFORMANCE.

