

OFFICE

INDUSTRIAL

COMMERCIAL

SALE

# MONTHLY LISTINGS REPORT

NEWFOUNDLAND & LABRADOR | NOVEMBER 2025



**CUSHMAN &  
WAKEFIELD**  
Atlantic

# FOR LEASE



Better never settles



OFFICE SPACE

---



INDUSTRIAL SPACE

---



COMMERCIAL SPACE

---





# 01

**OFFICE SPACE | FOR LEASE**



**CUSHMAN &  
WAKEFIELD**  
Atlantic

OFFICE

INDUSTRIAL

COMMERCIAL

SALE



# OFFICE SPACE FOR LEASE

CLICK ON THE PHOTO TO OBTAIN MORE INFORMATION ONLINE



## DORSET BUILDING, 6 MOUNT CARSON AVENUE, MOUNT PEARL

Size	2,112 sf	Details	Modern 3 storey building with elevator and ample parking.
Price	\$18.00 psf Net	Agent(s)	Joanne Earle



## 15 HALLETT CRESCENT, ST. JOHN'S

Size	Various	Details	Accessible office in well situated building in O'Leary Industrial Park
Price	\$12.00 psf Net	Agent(s)	Joanne Earle



# FOR SALE



Better never settles



COMMERCIAL PROPERTIES

---



INDUSTRIAL PROPERTIES

---



LAND PROPERTIES

---





# COMMERCIAL PROPERTIES | FOR SALE



**CUSHMAN &  
WAKEFIELD**  
Atlantic

OFFICE

INDUSTRIAL

COMMERCIAL

SALE



# COMMERCIAL PROPERTIES FOR SALE

CLICK ON THE PHOTO TO OBTAIN MORE INFORMATION ONLINE



MODERN DAYTIME RESTAURANT   FRANCHISE OPPORTUNITY			
Size	Fully-Operational	Details	Well-established, turn-key restaurant franchise available
Price	Please Contact	Agent(s)	Joanne Earle





**INDUSTRIAL PROPERTIES | FOR SALE**



**CUSHMAN &  
WAKEFIELD**  
Atlantic



OFFICE

INDUSTRIAL

COMMERCIAL

SALE



# INDUSTRIAL PROPERTIES FOR SALE

CLICK ON THE PHOTO TO OBTAIN MORE INFORMATION ONLINE



## 2 BRUCE STREET, MOUNT PEARL

<b>Size</b>	33,847 sf	<b>Details</b>	Fully-leased industrial property in the Donovan's Industrial Park
<b>Price</b>	Please Contact	<b>Agent(s)</b>	Joanne Earle



## 82 WINNIPEG STREET, GOOSE BAY

<b>Size</b>	12,813 sf	<b>Details</b>	Hangar building with 2 <sup>nd</sup> level office space and direct airside access
<b>Price</b>	\$ 1,900,000	<b>Agent(s)</b>	Bill MacAvoy

03

**LAND PROPERTIES | FOR SALE**



**CUSHMAN &  
WAKEFIELD**  
Atlantic



OFFICE

INDUSTRIAL

COMMERCIAL

SALE



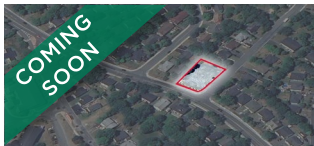
# LAND FOR SALE

CLICK ON THE PHOTO TO OBTAIN MORE INFORMATION ONLINE



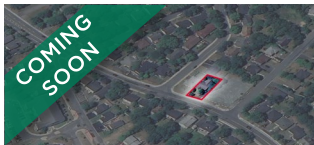
## 246 TOPSAIL ROAD, ST. JOHN'S

<b>Size</b>	5,581 SF	<b>Details</b>	Vacant land along Topsail Road with Residential zoning (R1)
<b>Price</b>	Please Contact	<b>Agent(s)</b>	Joanne Earle



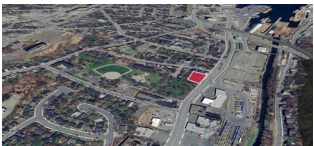
## 98 CORNWALL ROAD, ST. JOHN'S

<b>Size</b>	15,383 sf	<b>Details</b>	Vacant development land with R2 zoning (Residential
<b>Price</b>	Please Contact	<b>Agent(s)</b>	Joanne Earle



## 100 CORNWALL ROAD, ST. JOHN'S

<b>Size</b>	5,047 sf	<b>Details</b>	Residential land with existing dwelling on-site
<b>Price</b>	Please Contact	<b>Agent(s)</b>	Joanne Earle



## 610 WATER STREET, ST. JOHN'S

<b>Size</b>	27,251 SF	<b>Details</b>	Prime commercial land available in St. John's, moments from downtown
<b>Price</b>	Please Contact	<b>Agent(s)</b>	Joanne Earle



## ROUTE 93, MT. CARMEL-MITCHELLS BROOK-ST. CATHERINES

<b>Size</b>	37,201 sf	<b>Details</b>	Highly visible vacant land for sale in the town of Mt. Carmel.
<b>Price</b>	Please Contact	<b>Agent(s)</b>	Joanne Earle



## 11 CIRCULAR DRIVE, ST. ALBAN'S

<b>Size</b>	2.25 acres	<b>Details</b>	Vacant commercial land in St. Alban's, zoned Mixed Development .
<b>Price</b>	Please Contact	<b>Agent(s)</b>	Joanne Earle

OFFICE

INDUSTRIAL

COMMERCIAL

SALE



# LAND FOR SALE

CLICK ON THE PHOTO TO OBTAIN MORE INFORMATION ONLINE



## 206-212 VILLE MARIE DRIVE, MARYSTOWN

<b>Size</b>	1.06 acres	<b>Details</b>	Vacant land in Marystown. Formerly used as a gas/service station
<b>Price</b>	Please Contact	<b>Agent(s)</b>	Joanne Earle



## 1325-1331 TOPSAIL ROAD, PARADISE

<b>Size</b>	1.12 acres	<b>Details</b>	Development opportunity with a high profile location.
<b>Price</b>	Please Contact	<b>Agent(s)</b>	Joanne Earle



## 727 KENMOUNT ROAD, MOUNT PEARL

<b>Size</b>	6.847 acres	<b>Details</b>	Large cleared lot and unserviced land for development. Panoramic views!
<b>Price</b>	Please Contact	<b>Agent(s)</b>	Joanne Earle



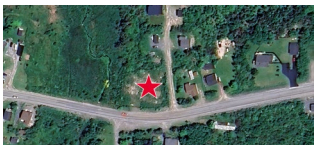
## 12 MAGEE ROAD, GANDER

<b>Size</b>	1.18 acres	<b>Details</b>	Vacant commercial development land with great visibility & frontage.
<b>Price</b>	Please Contact	<b>Agent(s)</b>	Joanne Earle



## 14 BRYAN'S ROAD, FOGO ISLAND

<b>Size</b>	2.30 acres	<b>Details</b>	Undeveloped vacant commercial land well positioned on Fogo Island.
<b>Price</b>	Please Contact	<b>Agent(s)</b>	Joanne Earle



## 268 & 270 BLOW-ME-DOWN DRIVE, OLD PERLICAN

<b>Size</b>	40,075 sf	<b>Details</b>	Commercial development land in the village of Old Perlican.
<b>Price</b>	Please Contact	<b>Agent(s)</b>	Joanne Earle





**CUSHMAN &  
WAKEFIELD**  
Atlantic

**Better never settles**  
[cwatlantic.com](http://cwatlantic.com)



**Joanne Earle**  
Associate Vice President  
709 576 3777 Direct  
709 699 6832 Mobile  
[jearle@cwatlantic.com](mailto:jearle@cwatlantic.com)