

OFFICE

INDUSTRIAL

RETAIL

SALE

MONTHLY LISTINGS REPORT

NEWFOUNDLAND & LABRADOR | MAY 2025



FOR LEASE



Better never settles

4

OFFICE SPACE

6

INDUSTRIAL SPACE



01

OFFICE SPACE | FOR LEASE



**CUSHMAN &
WAKEFIELD**
Atlantic

OFFICE

INDUSTRIAL

RETAIL

SALE



OFFICE SPACE FOR LEASE

CLICK ON THE PHOTO TO OBTAIN MORE INFORMATION ONLINE



DORSET BUILDING, 6 MOUNT CARSON AVENUE, MOUNT PEARL

Size	2,112 sf	Details	Modern 3 storey building with elevator and ample parking.
Price	\$18.00 psf Net	Agent(s)	Joanne Earle



15 HALLETT CRESCENT, ST. JOHN'S

Size	Various	Details	Accessible office in well situated building in O'Leary Industrial Park
Price	\$12.00 psf Net	Agent(s)	Joanne Earle



55 ELIZABETH AVENUE, ST. JOHN'S

Size	432 – 2,122 sf	Details	Professional office space in a well-situated iconic 3-storey office building.
Price	Please Contact	Agent(s)	Joanne Earle

A woman with long dark hair, wearing a tan trench coat, black leggings, and yellow sneakers, is walking across a city street. She is looking down at her smartphone. The background shows a city street with buildings and other pedestrians.

FOR SALE

Better never settles

9

COMMERCIAL PROPERTIES

11

INDUSTRIAL PROPERTIES

13

LAND PROPERTIES



INDUSTRIAL PROPERTIES | FOR SALE



**CUSHMAN &
WAKEFIELD**

Atlantic

OFFICE

INDUSTRIAL

RETAIL

SALE



INDUSTRIAL PROPERTIES FOR SALE

CLICK ON THE PHOTO TO OBTAIN MORE INFORMATION ONLINE



82 WINNIPEG STREET, GOOSE BAY

Size	12,813 sf	Details	Hangar building with 2 nd level office space and direct airside access
Price	\$ 1,900,000	Agent(s)	Bill MacAvoy

03

LAND PROPERTIES | FOR SALE



**CUSHMAN &
WAKEFIELD**
Atlantic

OFFICE

INDUSTRIAL

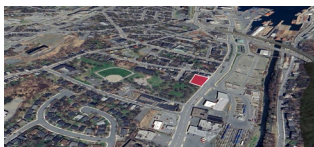
RETAIL

SALE



LAND FOR SALE

CLICK ON THE PHOTO TO OBTAIN MORE INFORMATION ONLINE



610 WATER STREET, ST. JOHN'S

Size	27,251 SF	Details	Prime commercial land available in St. John's, moments from downtown
Price	Please Contact	Agent(s)	Joanne Earle



ROUTE 93, MT. CARMEL-MITCHELLS BROOK-ST. CATHERINES

Size	37,201 sf	Details	Highly visible vacant land for sale in the town of Mt. Carmel.
Price	Please Contact	Agent(s)	Joanne Earle



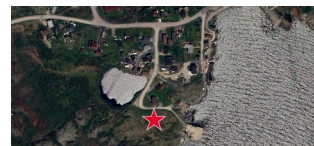
11 CIRCULAR DRIVE, ST. ALBAN'S

Size	2.25 acres	Details	Vacant commercial land in St. Alban's, zoned Mixed Development .
Price	Please Contact	Agent(s)	Joanne Earle



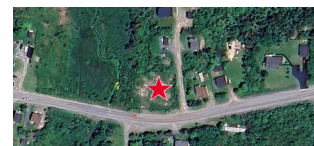
12 MAGEE ROAD, GANDER

Size	1.18 acres	Details	Vacant commercial development land with great visibility & frontage.
Price	Please Contact	Agent(s)	Joanne Earle



14 BRYAN'S ROAD, FOGO ISLAND

Size	2.30 acres	Details	Undeveloped vacant commercial land well positioned on Fogo Island.
Price	Please Contact	Agent(s)	Joanne Earle



268 & 270 BLOW-ME-DOWN DRIVE, OLD PERLICAN

Size	40,075 sf	Details	Commercial development land in the village of Old Perlican.
Price	Please Contact	Agent(s)	Joanne Earle

OFFICE

INDUSTRIAL

RETAIL

SALE



LAND FOR SALE

CLICK ON THE PHOTO TO OBTAIN MORE INFORMATION ONLINE



206-212 VILLE MARIE DRIVE, MARYSTOWN

Size	1.06 acres	Details	Vacant land in Marystown. Formerly used as a gas/service station
Price	Please Contact	Agent(s)	Joanne Earle



1325-1331 TOPSAIL ROAD, PARADISE

Size	1.12 acres	Details	Development opportunity with a high profile location.
Price	Please Contact	Agent(s)	Joanne Earle



727 KENMOUNT ROAD, MOUNT PEARL

Size	6.847 acres	Details	Large cleared lot and unserviced land for development. Panoramic views!
Price	Please Contact	Agent(s)	Joanne Earle



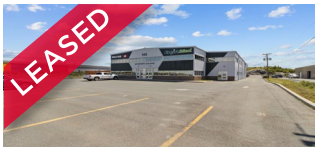
WE DIDN'T COME THIS FAR, **JUST** **TO COME** **THIS FAR.**



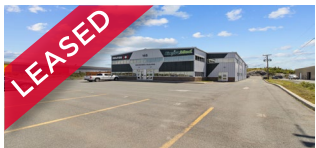
SOLD & LEASED

A LIST OF PROPERTIES SOLD AND
LEASED BY OUR BROKERAGE TEAM
IN THE LAST 30 DAYS.

SOLD AND LEASED PROPERTIES



145 MCNAMARA DRIVE SUITE 102, PARADISE			
Size	3,428 sf + (2,000 sf)	Details	Ground floor office space with approximately 2,000 sf warehouse available
Price	\$15.00 psf Net	Agent(s)	Joanne Earle



145 MCNAMARA DRIVE SUITE 201, PARADISE			
Size	5,372 sf	Details	Spacious 2nd-floor office space in a highly visible commercial property
Price	\$17.00 psf Net	Agent(s)	Joanne Earle



**CUSHMAN &
WAKEFIELD**

Atlantic

Better never settles
cwatlantic.com



Joanne Earle
Associate Vice President
709 576 3777 Direct
709 699 6832 Mobile

jearle@cwatlantic.com