

OFFICE

INDUSTRIAL

COMMERCIAL

SALE

MONTHLY LISTINGS REPORT

NEW BRUNSWICK | JULY 2025



FOR LEASE



Better never settles

04 OFFICE SPACE

10 INDUSTRIAL SPACE

12 COMMERCIAL SPACE



01

OFFICE SPACE | FOR LEASE



**CUSHMAN &
WAKEFIELD**
Atlantic

OFFICE

INDUSTRIAL

COMMERCIAL

SALE



OFFICE SPACE FOR LEASE

CLICK ON THE PHOTO TO OBTAIN MORE INFORMATION ONLINE



10 DESBRISAY AVENUE, MONCTON

[TAKE VIRTUAL TOUR](#)

| | | | |
|--------------|-----------------|-----------------|--|
| Size | 2,500 sf | Details | 1,400 sf of warehouse space & 1,100 sf of office space |
| Price | \$12.50 psf Net | Agent(s) | Adam MaGee Suzie Taylor |



735 MAIN STREET, MONCTON

[TAKE VIRTUAL TOUR](#)

| | | | |
|--------------|---------------------------|-----------------|--|
| Size | 1,276 - 3,202 sf. | Details | Well-maintained, downtown office space with nearby parking |
| Price | \$15.00 – \$17.00 psf Net | Agent(s) | Adam MaGee Jamie Smith Suzie Taylor |



644 MAIN STREET, MONCTON

[TAKE VIRTUAL TOUR](#)

| | | | |
|--------------|---------------------------|-----------------|--|
| Size | 14,650 sf | Details | Office space for sub-lease with parking, hotel, and amenities nearby |
| Price | Contact Agent for Details | Agent(s) | Donna Green |



538 GAUVIN ROAD, DIEPPE

[TAKE VIRTUAL TOUR](#)

| | | | |
|--------------|-----------------|-----------------|---|
| Size | 1,152 sf | Details | Professionally finished ground-floor suite in the heart of Dieppe, NB |
| Price | \$18.00 psf Net | Agent(s) | Donna Green |



80 DRISCOLL CRESCENT | SUITE 200, MONCTON

| | | | |
|--------------|-------------------|-----------------|--|
| Size | 6,750 sf | Details | Prime 2 nd floor office space in the Moncton Industrial Park. |
| Price | \$15.75 psf Gross | Agent(s) | Adam MaGee Suzie Taylor |



406 COVERDALE ROAD, RIVERVIEW

[TAKE VIRTUAL TOUR](#)

| | | | |
|--------------|-----------------------|-----------------|--|
| Size | 1,402 sf | Details | Single tenant commercial building in highly visible location |
| Price | \$2,800/mo Semi-Gross | Agent(s) | Donna Green |

OFFICE

INDUSTRIAL

COMMERCIAL

SALE



OFFICE SPACE FOR LEASE

CLICK ON THE PHOTO TO OBTAIN MORE INFORMATION ONLINE



1333 MAIN STREET, MONCTON

[DRONE VIDEO](#)

| | | | |
|--------------|----------------|-----------------|--|
| Size | up to 8,157 sf | Details | Ground floor commercial space in Downtown Moncton with on-site parking |
| Price | \$23 psf Net | Agent(s) | Suzie Taylor Adam MaGee |



210 JOHN STREET, MONCTON

| | | | |
|--------------|--------------|-----------------|--|
| Size | 10,000 sf | Details | Two-storey professional office building with 10,000 sf available |
| Price | \$17 psf NNN | Agent(s) | Jamie Smith |



594 ROTHESAY AVENUE, SAINT JOHN

| | | | |
|--------------|--------------------------|-----------------|---|
| Size | 372-561 sf | Details | Renovated office space at a convenient location |
| Price | \$1,250-\$1,850/mo Gross | Agent(s) | Brock Turner, Stephanie Turner |



679-687 MAIN STREET, MONCTON

| | | | |
|--------------|-----------------|-----------------|---|
| Size | 1,482 sf | Details | Second floor suite with brick finishes, accessible via elevator |
| Price | \$17.00 psf Net | Agent(s) | Adam MaGee Jamie Smith Suzie Taylor |



400 MAIN STREET, SAINT JOHN

| | | | |
|--------------|----------------|-----------------|--|
| Size | 12,081 sf | Details | Office space for sub-lease with parking, hotel, and amenities nearby |
| Price | \$15 psf Gross | Agent(s) | Brock Turner Stephanie Turner |



599 MAIN STREET, MONCTON

[TAKE VIRTUAL TOUR](#)

| | | | |
|--------------|--------------------|-----------------|--|
| Size | +/- 812 – 2,438 sf | Details | Second floor commercial suites on Main Street. |
| Price | \$25.00 psf Gross | Agent(s) | Donna Green |

OFFICE

INDUSTRIAL

COMMERCIAL

SALE



OFFICE SPACE FOR LEASE

CLICK ON THE PHOTO TO OBTAIN MORE INFORMATION ONLINE



133 PRINCE WILLIAM STREET, SAINT JOHN

TAKE VIRTUAL TOUR [SUITE 305](#) | [SUITE 402](#)

| | | | |
|--------------|---------------------|-----------------|--|
| Size | 2,131 sf & 2,030 sf | Details | Uptown office building with scenic harbour views and ample parking |
| Price | \$19.50 psf Gross | Agent(s) | Brock Turner Stephanie Turner |



696 MAIN STREET, MONCTON

[TAKE VIRTUAL TOUR](#)

| | | | |
|--------------|---------------------|-----------------|--|
| Size | +/- 3,000 sf | Details | Prime Downtown Location! Ground floor commercial on Main Street. |
| Price | \$34 psf Semi-Gross | Agent(s) | Donna Green |



334 MAIN STREET, SHEDIAC

| | | | |
|--------------|------------------------|-----------------|--|
| Size | Various suites | Details | Various size commercial suites available |
| Price | \$550-\$1,400/mo Gross | Agent(s) | Donna Green |



60 QUEEN STREET, MONCTON

[TAKE VIRTUAL TOUR](#)

| | | | |
|--------------|------------------------|-----------------|---|
| Size | 5,210 sf | Details | Prominent ground floor commercial space ideal for office, retail or other |
| Price | \$32.50 psf Semi-Gross | Agent(s) | Donna Green |



35 HIGHFIELD STREET, MONCTON

| | | | |
|--------------|-----------------|-----------------|---|
| Size | +/- 7,257 sf | Details | Historic leasing opportunity in one of Moncton's most iconic properties |
| Price | \$11.00 psf Net | Agent(s) | Adam MaGee Jamie Smith Suzie Taylor |

OFFICE

INDUSTRIAL

COMMERCIAL

SALE



OFFICE SPACE FOR LEASE

CLICK ON THE PHOTO TO OBTAIN MORE INFORMATION ONLINE



123 LUTZ STREET, MONCTON

[TAKE VIRTUAL TOUR](#)

| | | | |
|--------------|---------------------|-----------------|---|
| Size | Up to 21,000 sf | Details | Versatile layout with a blend of retail, warehouse, and office space. |
| Price | \$13 - \$15 psf Net | Agent(s) | Adam MaGee Suzie Taylor |



795 MAIN STREET, MONCTON

| | | | |
|--------------|------------------|-----------------|---|
| Size | +/- 787 sf | Details | Renovated office building W/ elevator; on Main Street |
| Price | \$2,000/monthly* | Agent(s) | Donna Green |



BRUNSWICK SQUARE OFFICE TOWER, SAINT JOHN

| | | | |
|--------------|-----------------|-----------------|---|
| Size | 704– 17,733 sf | Details | 19 storey office tower located in uptown Saint John |
| Price | \$10.00 psf Net | Agent(s) | Stephanie Turner Brock Turner |



50 DRISCOLL CRESCENT, MONCTON

[TAKE VIRTUAL TOUR](#)

| | | | |
|--------------|----------------|-----------------|--|
| Size | +/- 593 sf | Details | Professional second floor office suite available |
| Price | \$925/mo Gross | Agent(s) | Donna Green |

Q2

INDUSTRIAL SPACE | FOR LEASE



**CUSHMAN &
WAKEFIELD**

Atlantic

OFFICE

INDUSTRIAL

RETAIL

SALE



INDUSTRIAL SPACE FOR LEASE

CLICK ON THE PHOTO TO OBTAIN MORE INFORMATION ONLINE



10 DESBRISAY AVE, MONCTON

[TAKE VIRTUAL TOUR](#)

Size 2,500 sf **Details** Features 1,400 sf of warehouse space & 1,100 sf of office space.

Price \$12.50 psf Net **Agent(s)** Adam MaGee | Suzie Taylor



725 CHAMPLAIN STREET, DIEPPE

[TAKE VIRTUAL TOUR](#)

Size 1,200 sf | 2,800 sf **Details** Suite 400 & 400B | Versatile office with warehouse space

Price \$14.75 pfs Net **Agent(s)** Adam MaGee | Suzie Taylor



265 CALEDONIA ROAD, MONCTON

Size 3,791 sf **Details** Versatile single-tenant industrial space in the Caledonia Industrial Park

Price \$17.50 psf Net **Agent(s)** Adam MaGee | Suzie Taylor



41 ENTERPRISE DRIVE, QUISPAMIS

Size 3,000 sf **Details** Recently constructed warehouse or manufacturing space

Price \$16.00 psf Net +\$7.00 psf **Agent(s)** Mike Watkins



88 TOOMBS STREET, MONCTON

Size 4,500 sf **Details** Industrial cross-dock building in accessible location

Price \$7.75 psf Net **Agent(s)** Adam MaGee | Suzie Taylor



30 WHITEBONE WAY, SAINT JOHN

Size 1,414 sf **Details** Industrial office with small warehouse/storage

Price \$8.00 psf Net +\$4.00 psf **Agent(s)** Brock Turner | Stephanie Turner

OFFICE

INDUSTRIAL

RETAIL

SALE



INDUSTRIAL SPACE FOR LEASE

CLICK ON THE PHOTO TO OBTAIN MORE INFORMATION ONLINE



671 MALENFANT BOULEVARD, DIEPPE

[TAKE VIRTUAL TOUR](#)

| | | | |
|--------------|----------------|-----------------|--|
| Size | 4,969 sf | Details | Adaptable industrial space w/ 21' clear heights and dock loading |
| Price | Please Contact | Agent(s) | Adam MaGee Suzie Taylor |



280 DESBRISAY AVENUE, MONCTON

[DRONE VIDEO](#)

| | | | |
|--------------|-----------------|-----------------|---|
| Size | 62,100 sf | Details | State-of-the-art warehouse in Moncton Industrial Park |
| Price | \$14.75 psf Net | Agent(s) | Adam MaGee Suzie Taylor |



HARRISVILLE LOGISTICS PARK BUILD TO SUIT, MONCTON

| | | | |
|--------------|-----------------|-----------------|--|
| Size | Up to 80,000 sf | Details | Customizable build to suit located on the Shediac Road |
| Price | Please Contact | Agent(s) | Jamie Smith |



158 TOOMBS STREET, MONCTON

| | | | |
|--------------|-----------------|-----------------|---|
| Size | 11,200 | Details | 11,200 square feet of versatile warehouse space |
| Price | \$12.00 psf Net | Agent(s) | Adam MaGee Suzie Taylor |

QZ

COMMERCIAL SPACE | FOR LEASE



**CUSHMAN &
WAKEFIELD**
Atlantic

OFFICE

INDUSTRIAL

RETAIL

SALE



COMMERCIAL SPACE FOR LEASE

CLICK ON THE PHOTO TO OBTAIN MORE INFORMATION ONLINE



184 HAMPTON ROAD, QUISPAMSIS

| | | | |
|--------------|-----------------|-----------------|---|
| Size | 832 sf | Details | Prime commercial/retail space in the Lakefield Plaza. |
| Price | \$14.00 psf Net | Agent(s) | Brock Turner Stephanie Turner |



538 GAUVIN ROAD, DIEPPE

[TAKE VIRTUAL TOUR](#)

| | | | |
|--------------|-----------------|-----------------|---|
| Size | 1,152 sf | Details | Professionally finished ground-floor suite in the heart of Dieppe, NB |
| Price | \$18.00 psf Net | Agent(s) | Donna Green |



LANCASTER CROSSING | 621 FAIRVILLE BOULEVARD, SAINT JOHN

| | | | |
|--------------|------------------------|-----------------|---|
| Size | Up to 14,000 sf | Details | Retail complex conveniently located in the heart of Uptown Saint John |
| Price | \$20.00 psf Semi-Gross | Agent(s) | Stephanie Turner, Brock Turner |



406 COVERDALE ROAD, RIVERVIEW

[TAKE VIRTUAL TOUR](#)

| | | | |
|--------------|-----------------------|-----------------|--|
| Size | 1,402 sf | Details | Single tenant commercial building in highly visible location |
| Price | \$2,800/mo Semi-Gross | Agent(s) | Donna Green |



334 MAIN STREET, SHEDIAC

| | | | |
|--------------|------------------------|-----------------|---|
| Size | Various suites | Details | Various size commercial suites in downtown building |
| Price | \$550-\$1,400/mo Gross | Agent(s) | Donna Green |



52 PROGRESS DRIVE, ST. STEPHEN

| | | | |
|--------------|--------------|-----------------|--|
| Size | 2,413 sf | Details | Warehouse in St. Stephen Industrial Park |
| Price | \$2000/month | Agent(s) | Stephanie Turner Brock Turner |

OFFICE

INDUSTRIAL

RETAIL

SALE



COMMERCIAL SPACE FOR LEASE

CLICK ON THE PHOTO TO OBTAIN MORE INFORMATION ONLINE



599 MAIN STREET, MONCTON

[TAKE VIRTUAL TOUR](#)

| | | | |
|--------------|--------------------|-----------------|--|
| Size | +/- 812 – 2,438 sf | Details | Second floor commercial suites on Main Street. |
| Price | \$25.00 psf Gross | Agent(s) | Donna Green |



630 PINWOOD ROAD, RIVERVIEW

[TAKE VIRTUAL TOUR](#)

| | | | |
|--------------|-----------------------|-----------------|--|
| Size | +/- 1,200 sf | Details | High traffic commercial space in multi tenant strip center |
| Price | \$2,800/mo Semi-Gross | Agent(s) | Donna Green |



120 MILLENNIUM, SAINT JOHN

| | | | |
|--------------|--------------------------|-----------------|--|
| Size | +/- 2,000 sf | Details | Well-maintained commercial building with ample parking and easy access |
| Price | \$16.00 psf + \$7.77 psf | Agent(s) | Brock Turner Stephanie Turner |



696 MAIN STREET, MONCTON

[TAKE VIRTUAL TOUR](#)

| | | | |
|--------------|---------------------|-----------------|--|
| Size | +/- 3,000 sf | Details | Prime Downtown Location! Ground floor commercial on Main Street. |
| Price | \$34 psf Semi-Gross | Agent(s) | Donna Green |



795 MAIN STREET, MONCTON

| | | | |
|--------------|------------------|-----------------|---|
| Size | +/- 787 sf | Details | Renovated office building W/ elevator; on Main Street |
| Price | \$2,000/monthly* | Agent(s) | Donna Green |



39 KING STREET, SAINT JOHN

| | | | |
|--------------|-----------------------|-----------------|---|
| Size | Various suites | Details | Retail complex conveniently located in the heart of Uptown Saint John |
| Price | \$10.00 psf + \$20.09 | Agent(s) | Stephanie Turner Brock Turner |

OFFICE

INDUSTRIAL

RETAIL

SALE



COMMERCIAL SPACE FOR LEASE

CLICK ON THE PHOTO TO OBTAIN MORE INFORMATION ONLINE



60 QUEEN STREET, MONCTON

[TAKE VIRTUAL TOUR](#)

| | | | |
|--------------|------------------------|-----------------|---|
| Size | 5,210 sf | Details | Prominent ground floor commercial space ideal for office, retail or other |
| Price | \$32.50 psf Semi-Gross | Agent(s) | Donna Green |



1333 MAIN STREET, MONCTON

[DRONE TOUR](#)

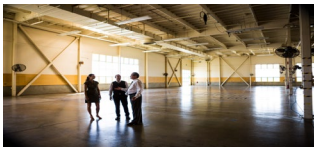
| | | | |
|--------------|----------------|-----------------|--|
| Size | up to 8,157 sf | Details | Ground floor commercial space in Downtown Moncton with on-site parking |
| Price | \$23 psf Net | Agent(s) | Suzie Taylor Adam MaGee |



123 LUTZ STREET, MONCTON

[TAKE VIRTUAL TOUR](#)

| | | | |
|--------------|---------------------|-----------------|---|
| Size | +/- 21,000 sf | Details | Versatile layout with a blend of retail, warehouse, and office space. |
| Price | \$13 - \$15 psf Net | Agent(s) | Adam MaGee Suzie Taylor |



HARRISVILLE LOGISTICS PARK BUILD TO SUIT, MONCTON

| | | | |
|--------------|-----------------|-----------------|--|
| Size | Up to 80,000 sf | Details | Customizable build to suit located on the Shediac Road |
| Price | Please Contact | Agent(s) | Jamie Smith |



FOR SALE

Better never settles

[17](#) MUR PROPERTIES

[19](#) INDUSTRIAL PROPERTIES

[22](#) LAND PROPERTIES

[26](#) COMMERCIAL PROPERTIES



INDUSTRIAL PROPERTIES | FOR SALE



**CUSHMAN &
WAKEFIELD**

Atlantic

OFFICE

INDUSTRIAL

RETAIL

SALE



INDUSTRIAL PROPERTIES FOR SALE

CLICK ON THE PHOTO TO OBTAIN MORE INFORMATION ONLINE



52 PROGRESS DRIVE, ST. STEPHEN

| | | | |
|--------------|-----------|-----------------|--|
| Size | 2,413 sf | Details | Industrial warehouse offering a prime location |
| Price | \$325,000 | Agent(s) | Stephanie Turner Brock Turner |



40 ASHBURN LAKE ROAD, SAINT JOHN

| | | | |
|--------------|----------------|-----------------|--|
| Size | 45,000 sf | Details | Fully occupied industrial/flex property on 7.3 acres |
| Price | Please Contact | Agent(s) | Bill MacAvoy |



53 PROGRESS DRIVE, ST. STEPHEN

| | | | |
|--------------|-------------|-----------------|---|
| Size | 33,280 sf | Details | Modern, food-grade facility with lab, warehouse, and office spaces. |
| Price | \$3,000,000 | Agent(s) | Stephanie Turner Brock Turner |



54 PROGRESS DRIVE, ST. STEPHEN

| | | | |
|--------------|-----------|-----------------|--|
| Size | 7,500 sf | Details | Steel-frame warehouse with office, storage, and prime border location. |
| Price | \$499,000 | Agent(s) | Stephanie Turner Brock Turner |



55 PROGRESS DRIVE, ST. STEPHEN

| | | | |
|--------------|-----------|-----------------|---|
| Size | 20,424 sf | Details | Prime location steel-frame warehouse with grade-level loading access. |
| Price | \$899,000 | Agent(s) | Stephanie Turner Brock Turner |



1160 CHAMPLAIN STREET, DIEPPE

[TAKE VIRTUAL TOUR](#)

| | | | |
|--------------|-------------|-----------------|---|
| Size | 10,000 sf | Details | Commercial building for sale in prime Dieppe location |
| Price | \$2,600,000 | Agent(s) | Adam MaGee Suzie Taylor |

QZ

LAND | FOR SALE



CUSHMAN &
WAKEFIELD
Atlantic

OFFICE

INDUSTRIAL

RETAIL

SALE



LAND PROPERTIES FOR SALE

CLICK ON THE PHOTO TO OBTAIN MORE INFORMATION ONLINE



514 MAIN STREET, WOODSTOCK

| | | | |
|--------------|-------------|-----------------|--|
| Size | 0.415 Acres | Details | Zoned General Commercial offering a versatile opportunities for various business ventures. |
| Price | \$80,000 | Agent(s) | Suzie Taylor Adam MaGee |



611 THORTON AVENUE, BATHURST

| | | | |
|--------------|------------|-----------------|---|
| Size | 0.31 Acres | Details | This Bathurst property offers a versatile opportunity as a single or two-unit dwelling. |
| Price | \$13,900 | Agent(s) | Suzie Taylor Adam MaGee |



87 RAMSEY STREET, CAMPBELLTON

| | | | |
|--------------|-----------|-----------------|--|
| Size | 2.3 Acres | Details | Highway Commercial Class 2 zoning, high visibility & access. |
| Price | \$300,000 | Agent(s) | Suzie Taylor Adam MaGee |



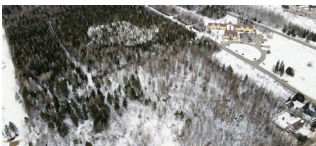
105 ROCKLAND ROAD, HARTLAND

| | | | |
|--------------|------------|-----------------|--|
| Size | 0.97 Acres | Details | This Hartland property, zoned Institutional. |
| Price | \$75,000 | Agent(s) | Suzie Taylor Adam MaGee |



CALEDONIA ROAD LAND, MONCTON

| | | | |
|--------------|-------------|-----------------|--|
| Size | 7.41 Acres | Details | Prime industrial land available in the Caledonia Industrial Park |
| Price | \$1,600,000 | Agent(s) | Adam MaGee Suzie Taylor |



SALISBURY ROAD LAND, MONCTON

| | | | |
|--------------|-------------|-----------------|--|
| Size | 72.8 Acres | Details | Exceptional development opportunity in a high-growth area. |
| Price | \$1,450,000 | Agent(s) | Jamie Smith |

OFFICE

INDUSTRIAL

RETAIL

SALE



LAND PROPERTIES FOR SALE

CLICK ON THE PHOTO TO OBTAIN MORE INFORMATION ONLINE



CHOCOLATE DRIVE, ST STEPHEN

| | | | |
|--------------|-----------|-----------------|--|
| Size | 12 acres | Details | Prime development land for sale in the commercial heart of St. Stephen |
| Price | \$249,000 | Agent(s) | Stephanie Turner, Brock Turner |



630 READY STREET, SAINT JOHN

| | | | |
|--------------|------------|-----------------|--|
| Size | 5.95 acres | Details | Prime 9,972 sq ft development site approved for 9-unit building. |
| Price | \$199,000 | Agent(s) | Brock Turner, Stephanie Turner |



85 MAIN STREET, PLASTER ROCK

| | | | |
|--------------|------------|-----------------|---|
| Size | 1.11 Acres | Details | Exceptional development opportunity in Plaster Rock |
| Price | \$16,000 | Agent(s) | Suzie Taylor Adam MaGee |



2337 HIGHWAY 15, IRISHTOWN

| | | | |
|--------------|------------|-----------------|---|
| Size | 1.29 Acres | Details | Agricultural/Commercial land located in Irishtown |
| Price | \$99,000 | Agent(s) | Adam MaGee Suzie Taylor |



53 MAIN STREET, ST. GEORGE

| | | | |
|--------------|------------|-----------------|--|
| Size | 1.37 Acres | Details | Cleared lot on the intersection of Main Street and Riverview Avenue. |
| Price | \$45,000 | Agent(s) | Adam MaGee Suzie Taylor |



HIGHMEADOW PARK, SAINT JOHN

[DRONE TOUR](#)

| | | | |
|--------------|------------|-----------------|--|
| Size | 1.44 Acres | Details | Prime multi-unit residential development opportunity |
| Price | \$725,000 | Agent(s) | Adam MaGee Suzie Taylor |

OFFICE

INDUSTRIAL

RETAIL

SALE



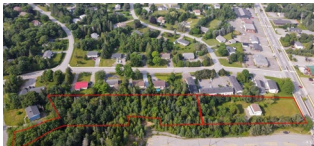
LAND PROPERTIES FOR SALE

CLICK ON THE PHOTO TO OBTAIN MORE INFORMATION ONLINE



845 THORNTON AVENUE, BATHURST

| | | | |
|--------------|------------|-----------------|----------------------------------|
| Size | 1.93 Acres | Details | Development land near CN railway |
| Price | \$80,000 | Agent(s) | Adam MaGee Suzie Taylor |



134 HAMPTON ROAD, ROTHESAY

[DRONE TOUR](#)

| | | | |
|--------------|------------|-----------------|---|
| Size | 2.16 Acres | Details | 2 lots located on Hampton Road, perfect for development |
| Price | \$669,000 | Agent(s) | Marc Gosselin |



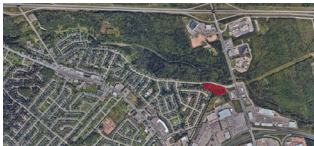
241 WILSEY ROAD, FREDERICTON

| | | | |
|--------------|------------|-----------------|--|
| Size | 2.25 Acres | Details | Prime commercial land within the Fredericton Industrial Park |
| Price | \$299,000 | Agent(s) | Adam MaGee, Suzie Taylor |



133-161 PARK STREET, SUSSEX

| | | | |
|--------------|------------|-----------------|--|
| Size | 3.48 Acres | Details | Former CN Site with 3.48 acres of development land |
| Price | \$159,000 | Agent(s) | Adam MaGee Suzie Taylor |



FRAMPTON LANE LAND, MONCTON

| | | | |
|--------------|-------------|-----------------|--|
| Size | 3.56 Acres | Details | 3.56 acres situated in the sought-after Moncton North Area |
| Price | \$1,200,000 | Agent(s) | Jamie Smith |



64 MAIN STREET, REXTON

| | | | |
|--------------|-----------|-----------------|--|
| Size | 3.8 Acres | Details | Partially wooded lot in central Rexton with fenced clearing along Main Street. |
| Price | \$99,500 | Agent(s) | Adam MaGee Suzie Taylor |

OFFICE

INDUSTRIAL

RETAIL

SALE



LAND PROPERTIES FOR SALE

CLICK ON THE PHOTO TO OBTAIN MORE INFORMATION ONLINE



50 PROGRESS DRIVE, ST STEPHEN

| | | | |
|--------------|--------------|-----------------|--|
| Size | +/- 31 acres | Details | +/- 31 acres of land available for sale in St. Stephen, NB |
| Price | \$387,500 | Agent(s) | Stephanie Turner, Brock Turner |



1857 MANAWAGONISH ROAD, SAINT JOHN

| | | | |
|--------------|-------------|-----------------|--|
| Size | 19.94 acres | Details | Exceptional Development Land on the west of Saint John |
| Price | \$719,000 | Agent(s) | Stephanie Turner, Brock Turner |



382 ACADIE AVENUE, DIEPPE

| | | | |
|--------------|-----------|-----------------|--|
| Size | 11,195 sf | Details | Corner lot development land situated within Dieppe |
| Price | \$250,000 | Agent(s) | Adam MaGee, Suzie Taylor |



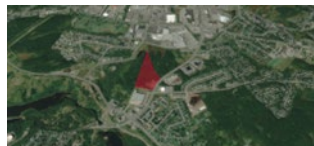
IVAN RAND DRIVE, MONCTON

| | | | |
|--------------|--------------|-----------------|---|
| Size | +/- 17 Acres | Details | Prime development site near Downtown Event Centre. Zoned SC |
| Price | \$2,400,000 | Agent(s) | Adam MaGee Suzie Taylor |



LOT RUE OULLETTE, GRAND FALLS

| | | | |
|--------------|-------------|-----------------|--|
| Size | 34.1 Acres | Details | 34.1 acres of land available for sale in the town of Grand Falls, NB |
| Price | \$2,349,000 | Agent(s) | Jamie Smith |



MCALLISTER DRIVE DEVELOPMENT LAND, SAINT JOHN

[DRONE TOUR](#)

| | | | |
|--------------|-------------|-----------------|---|
| Size | 14.65 Acres | Details | Development site available within Eastern Saint John. |
| Price | \$895,000 | Agent(s) | Adam MaGee Suzie Taylor |

OFFICE

INDUSTRIAL

RETAIL

SALE



LAND PROPERTIES FOR SALE

CLICK ON THE PHOTO TO OBTAIN MORE INFORMATION ONLINE



MCLAUGHLIN DEVELOPMENT LAND, MONCTON

[DRONE TOUR](#)

| | | | |
|--------------|----------------|-----------------|---|
| Size | 87 Acres | Details | Prime multi-unit residential development opportunity in Moncton |
| Price | Please Contact | Agent(s) | Bill MacAvoy Adam MaGee Suzie Taylor |



10 WHITEBONE WAY, SAINT JOHN

[DRONE TOUR](#)

| | | | |
|--------------|----------------|-----------------|--|
| Size | 10.63 Acres | Details | Reinforced land ready for heavy industrial use |
| Price | Please Contact | Agent(s) | Adam MaGee James Collins Suzie Taylor |



COMMERCIAL PROPERTIES | FOR SALE



**CUSHMAN &
WAKEFIELD**
Atlantic

OFFICE

INDUSTRIAL

RETAIL

SALE



COMMERCIAL PROPERTIES FOR SALE

CLICK ON THE PHOTO TO OBTAIN MORE INFORMATION ONLINE



259 FOSTER THURSTON

[TAKE VIRTUAL TOUR](#)

| | | | |
|--------------|---------------------|-----------------|---|
| Size | 24 Acres 3,750 sf | Details | Opportunity to own a one-of-a-kind forested retreat in the heart of the city. |
| Price | \$2,900,000 | Agent(s) | Stephanie Turner Brock Turner |



281 ST GEORGE STREET, MONCTON

| | | | |
|--------------|-----------------------|-----------------|--|
| Size | 4,560 sf 21,969 Lot | Details | Excellent investment opportunity to acquire a commercial/ building |
| Price | \$999,995 | Agent(s) | Jamie Smith |



FRIARS BAY INN & COTTAGES, CAMPOBELLO ISLAND

| | | | |
|--------------|-------------|-----------------|--|
| Price | \$1,375,000 | Details | Oceanfront hospitality opportunity with 14 units on 4.86 Acres |
| | | Agent(s) | Stephanie Turner |



BOUTIQUE HOTEL, ATLANTIC CANADA

| | | | |
|--------------|----------------|-----------------|--|
| Size | Please Contact | Details | Well-established boutique inn, restaurant and bar. |
| Price | | Agent(s) | Stephanie Turner Brock Turner |



SHADOW LAWN INN, ROTHESAY

| | | | |
|--------------|----------------|-----------------|---|
| Size | 9 room Inn | Details | Excellent investment opportunity to own a successful Inn and restaurant |
| Price | Please Contact | Agent(s) | Stephanie Turner Brock Turner |



308-310 MOUNTAIN ROAD, MONCTON

[TAKE VIRTUAL TOUR](#)

| | | | |
|--------------|--------------|-----------------|---|
| Size | +/- 2,641 sf | Details | Mixed-use property offering both commercial and residential opportunities |
| Price | \$549,000 | Agent(s) | Jamie Smith |

OFFICE

INDUSTRIAL

RETAIL

SALE



COMMERCIAL PROPERTIES FOR SALE

CLICK ON THE PHOTO TO OBTAIN MORE INFORMATION ONLINE



74 OHIO ROAD, SHEDIAC

| | | | |
|--------------|---------------------|-----------------|---|
| Size | 1,921 sf + 1,621 sf | Details | Office building with warehouse, grade loading, and government tenant. |
| Price | \$790,000 | Agent(s) | Adam MaGee, Suzie Taylor |



21 STONE AVENUE, MONCTON

[TAKE VIRTUAL TOUR](#)

| | | | |
|--------------|--------------|-----------------|--|
| Size | +/- 7,704 sf | Details | Excellent investment opportunity to acquire a commercial/ building |
| Price | \$975,000 | Agent(s) | Donna Green |



191 DOAK ROAD, FREDERICTON

| | | | |
|--------------|--------------|-----------------|---|
| Size | +/- 9,828 sf | Details | Office building sits on 5.56 acres with ample parking |
| Price | \$1,795,000 | Agent(s) | Adam MaGee, Suzie Taylor |



WE DIDN'T COME THIS FAR, **JUST TO COME THIS FAR.**



**CUSHMAN &
WAKEFIELD**

Atlantic

SOLD & LEASED

A LIST OF PROPERTIES SOLD AND
LEASED BY OUR BROKERAGE TEAM
IN THE LAST 30 DAYS.

SOLD AND LEASED PROPERTIES



505 ST. GEORGE STREET, MONCTON

| | | | |
|--------------|----------------|-----------------|---|
| Size | 225 sf | Details | Executive office in highly visible location |
| Price | \$750/mo Gross | Agent(s) | Jamie Smith |



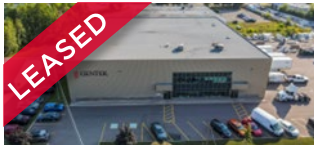
297 COLLISHAW STREET, MONCTON

| | | | |
|--------------|-----------------------|-----------------|---|
| Size | 2 offices | Details | Second floor individual office spaces for lease |
| Price | \$500/office/mo Gross | Agent(s) | Jamie Smith |



315-323 PLEASANT STREET, MIRAMICHI

| | | | |
|--------------|-----------------------------|-----------------|---|
| Size | 3 units | Details | Second floor individual office spaces for lease |
| Price | \$850-\$1,100/mo Semi-Gross | Agent(s) | Jamie Smith |



255 EDINBURGH DRIVE, MONCTON

[DRONE VIDEO](#)

| | | | |
|--------------|-----------------|-----------------|---|
| Size | 26,000 sf | Details | Industrial building with 5 dock doors and 3 grade doors |
| Price | \$15.25 psf Net | Agent(s) | Adam MaGee Suzie Taylor |



**CUSHMAN &
WAKEFIELD**
Atlantic

Better never settles
cwatlantic.com



Donna Green
Vice President
506 387 6930 Direct
506 866 1319 Mobile

dgreen@cwatlantic.com



Bill MacAvoy
Managing Director
902 425 1872 Direct
902 880 0445 Mobile

bmacavoy@cwatlantic.com



Marc Gosselin
Commercial Real Estate Advisor
506 636 1739 Mobile

mgosselin@cwatlantic.com



Adam MaGee
Vice President
506 387 6928 Direct
506 872 2507 Mobile

amagee@cwatlantic.com



Jamie Smith
Senior Associate
506 387 4169 Mobile

jsmith@cwatlantic.com



Brock Turner
Commercial Real Estate Advisor
506 608 8747 Mobile

bturner@cwatlantic.com



Mike Watkins
Senior Associate
506 639 0281 Mobile
506 652 5707 Fax

mwatkins@cwatlantic.com



Suzie Taylor
Commercial Real Estate Advisor
506 380 1777 Mobile

staylor@cwatlantic.com



Stephanie Turner
Associate Vice President
506 333 3442 Mobile

sturner@cwatlantic.com