

OFFICE

INDUSTRIAL

COMMERCIAL

SALE

# MONTHLY LISTINGS REPORT

NEW BRUNSWICK | APRIL 2025



**CUSHMAN &  
WAKEFIELD**  
Atlantic

# FOR LEASE



Better never settles

04 OFFICE SPACE

---

10 INDUSTRIAL SPACE

---

12 COMMERCIAL SPACE

---





# 01

**OFFICE SPACE | FOR LEASE**



**CUSHMAN &  
WAKEFIELD**  
Atlantic

OFFICE

INDUSTRIAL

COMMERCIAL

SALE



# OFFICE SPACE FOR LEASE

CLICK ON THE PHOTO TO OBTAIN MORE INFORMATION ONLINE



## 400 MAIN STREET, SAINT JOHN

<b>Size</b>	10,891 sf & 12,081 sf	<b>Details</b>	Office spaces for sub-lease with parking, hotel, and amenities nearby
<b>Price</b>	\$17 & \$15 psf Gross	<b>Agent(s)</b>	Brock Turner, Stephanie Turner



## 505 ST. GEORGE STREET, MONCTON

<b>Size</b>	225 sf	<b>Details</b>	Executive office in highly visible location
<b>Price</b>	\$750/mo Gross	<b>Agent(s)</b>	Jamie Smith



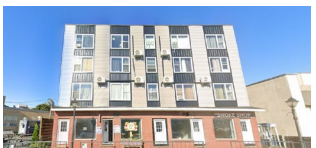
## 406 COVERDALE ROAD, RIVERVIEW

<b>Size</b>	Whole Building	<b>Details</b>	Commercial building in highly visible location
<b>Price</b>	Starting at \$2,800/mo Semi-Gross	<b>Agent(s)</b>	Donna Green



## 334 MAIN STREET, SHEDIAC

<b>Size</b>	Various suites	<b>Details</b>	Various size commercial suites available
<b>Price</b>	\$550-\$1,400/mo Gross	<b>Agent(s)</b>	Donna Green



## 315-323 PLEASANT STREET, MIRAMICHI

<b>Size</b>	3 units	<b>Details</b>	Second floor individual office spaces for lease
<b>Price</b>	\$850-\$1,100/mo Semi-Gross	<b>Agent(s)</b>	Jamie Smith



## 594 ROTHESAY AVENUE, SAINT JOHN

<b>Size</b>	372-561 sf	<b>Details</b>	Renovated office space at a convenient location
<b>Price</b>	\$1,250-\$1,850/mo Gross	<b>Agent(s)</b>	Brock Turner, Stephanie Turner

OFFICE

INDUSTRIAL

COMMERCIAL

SALE



# OFFICE SPACE FOR LEASE

CLICK ON THE PHOTO TO OBTAIN MORE INFORMATION ONLINE



## 795 MAIN STREET, MONCTON

<b>Size</b>	+/- 550 sf	<b>Details</b>	Renovated office building W/ elevator; on Main Street
<b>Price</b>	\$995 per Month*	<b>Agent(s)</b>	Donna Green



## 297 COLLISHAW STREET, MONCTON

<b>Size</b>	2 offices	<b>Details</b>	Second floor individual office spaces for lease
<b>Price</b>	\$500/office/mo Gross	<b>Agent(s)</b>	Jamie Smith



## 50 DRISCOLL CRESCENT, MONCTON

[TAKE VIRTUAL TOUR](#)

<b>Size</b>	+/- 593 sf	<b>Details</b>	Professional second floor office suite available
<b>Price</b>	\$925/mo Gross	<b>Agent(s)</b>	Donna Green



## BRUNSWICK SQUARE OFFICE TOWER, SAINT JOHN

<b>Size</b>	704– 17,733 sf	<b>Details</b>	19 storey office tower located in uptown Saint John
<b>Price</b>	\$10.00 psf Net	<b>Agent(s)</b>	Stephanie Turner, Brock Turner



## 232-236 ST. GEORGE STREET, MONCTON

<b>Size</b>	782 – 1,678 sf	<b>Details</b>	Various suites, 5-storey multi-tenant office building close to downtown.
<b>Price</b>	\$18 psf Gross	<b>Agent(s)</b>	Donna Green, Frederique Dangremond



## 599 MAIN STREET, MONCTON

[TAKE VIRTUAL TOUR](#)

<b>Size</b>	+/- 812 – 2,438 sf	<b>Details</b>	Second floor commercial suites on Main Street.
<b>Price</b>	\$25.00 psf Gross	<b>Agent(s)</b>	Donna Green



OFFICE

INDUSTRIAL

COMMERCIAL

SALE



# OFFICE SPACE FOR LEASE

CLICK ON THE PHOTO TO OBTAIN MORE INFORMATION ONLINE



## 860 MAIN STREET, MONCTON

[TAKE VIRTUAL TOUR](#)

<b>Size</b>	+/- 949 to 8,020 sf	<b>Details</b>	Downtown office space with great views and ample natural light
<b>Price</b>	\$15.00 psf Net	<b>Agent(s)</b>	Donna Green



## 1405 MOUNTAIN ROAD, MONCTON

<b>Size</b>	1,000 sf	<b>Details</b>	Ground-level commercial plaza, in highly visible intersection
<b>Price</b>	\$18.00 psf Net	<b>Agent(s)</b>	Adam MaGee, Suzie Taylor



## 735 MAIN STREET, MONCTON

[TAKE VIRTUAL TOUR](#)

<b>Size</b>	1,270 – 3,172 sf	<b>Details</b>	Well-maintained, downtown office space with nearby parking
<b>Price</b>	\$15.00 psf Net	<b>Agent(s)</b>	Adam MaGee, Jamie Smith, Suzie Taylor



## 679-687 MAIN STREET, MONCTON

<b>Size</b>	1,482 sf	<b>Details</b>	Second floor suite with brick finishes, accessible via elevator
<b>Price</b>	\$17.00 psf Net	<b>Agent(s)</b>	Adam MaGee, Jamie Smith, Suzie Taylor



## 116 PRINCE WILLIAM STREET, SAINT JOHN

<b>Size</b>	1,800 sf	<b>Details</b>	Prime corner office space with natural light and heritage character
<b>Price</b>	\$3,000/mo Semi-Gross	<b>Agent(s)</b>	Brock Turner, Stephanie Turner



## 133 PRINCE WILLIAM STREET, SAINT JOHN

[TAKE VIRTUAL TOUR](#) [SUITE 305](#) | [SUITE 402](#)

<b>Size</b>	2,131 sf & 2,030 sf	<b>Details</b>	Uptown office building with scenic harbour views and ample parking
<b>Price</b>	\$19.50 psf Gross	<b>Agent(s)</b>	Brock Turner, Stephanie Turner

OFFICE

INDUSTRIAL

COMMERCIAL

SALE



# OFFICE SPACE FOR LEASE

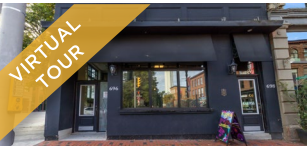
CLICK ON THE PHOTO TO OBTAIN MORE INFORMATION ONLINE



## 400 CHAMPLAIN STREET, DIEPPE

[TAKE VIRTUAL TOUR](#)

<b>Size</b>	+/- 2,838 sf	<b>Details</b>	Professional office space on Champlain Street
<b>Price</b>	\$4,500/mo Gross	<b>Agent(s)</b>	Donna Green



## 696 MAIN STREET, MONCTON

[TAKE VIRTUAL TOUR](#)

<b>Size</b>	+/- 3,000 sf	<b>Details</b>	Prime Downtown Location! Ground floor commercial on Main Street.
<b>Price</b>	\$34 psf Semi-Gross	<b>Agent(s)</b>	Donna Green



## 200 KAROLIE ROAD, RIVERVIEW

[DRONE VIDEO](#)

<b>Size</b>	3,275 sf	<b>Details</b>	This prime property offers high visibility in an established neighborhood.
<b>Price</b>	\$27.00 psf gross	<b>Agent(s)</b>	Jamie Smith



## 60 QUEEN STREET, MONCTON

[TAKE VIRTUAL TOUR](#)

<b>Size</b>	5,210 sf	<b>Details</b>	Prominent ground floor commercial space ideal for office, retail or other
<b>Price</b>	\$32.50 psf Semi-Gross	<b>Agent(s)</b>	Donna Green



## 35 HIGHFIELD STREET, MONCTON

<b>Size</b>	+/- 7,257 sf	<b>Details</b>	Historic leasing opportunity in one of Moncton's most iconic properties
<b>Price</b>	\$11.00 psf Net	<b>Agent(s)</b>	Adam MaGee, Jamie Smith, Suzie Taylor



## 210 JOHN STREET, MONCTON

<b>Size</b>	10,000 sf	<b>Details</b>	Two-storey professional office building with 10,000 sf available
<b>Price</b>	\$17 psf NNN	<b>Agent(s)</b>	Jamie Smith

OFFICE

INDUSTRIAL

COMMERCIAL

SALE



# OFFICE SPACE FOR LEASE

CLICK ON THE PHOTO TO OBTAIN MORE INFORMATION ONLINE



## 1333 MAIN STREET, MONCTON

[DRONE VIDEO](#)

<b>Size</b>	Up to 10,457 sf	<b>Details</b>	Ground floor commercial space in Downtown Moncton with on-site parking
<b>Price</b>	\$23 psf Net	<b>Agent(s)</b>	Suzie Taylor, Adam MaGee



## 123 LUTZ STREET, MONCTON

[TAKE VIRTUAL TOUR](#)

<b>Size</b>	Up to 21,000 sf	<b>Details</b>	Versatile layout with a blend of retail, warehouse, and office space.
<b>Price</b>	\$13 - \$15 psf Net	<b>Agent(s)</b>	Adam MaGee, Suzie Taylor





**INDUSTRIAL SPACE | FOR LEASE**



**CUSHMAN &  
WAKEFIELD**

Atlantic

OFFICE

INDUSTRIAL

RETAIL

SALE



# INDUSTRIAL SPACE FOR LEASE

CLICK ON THE PHOTO TO OBTAIN MORE INFORMATION ONLINE



## 265 CALEDONIA ROAD, MONCTON

<b>Size</b>	3,791 sf	<b>Details</b>	Versatile single-tenant industrial space in the Caledonia Industrial Park
<b>Price</b>	\$17.50 psf Net	<b>Agent(s)</b>	Adam MaGee, Suzie Taylor



## 30 WHITEBONE WAY, SAINT JOHN

<b>Size</b>	1,414 sf	<b>Details</b>	Recently constructed warehouse or manufacturing space
<b>Price</b>	\$8.00 psf Net +\$4.00 psf	<b>Agent(s)</b>	Brock Turner, Stephanie Turner



## 41 ENTERPRISE DRIVE, QUISPAMIS

<b>Size</b>	3,000 sf	<b>Details</b>	Recently constructed warehouse or manufacturing space
<b>Price</b>	\$16.00 psf Net +\$7.00 psf	<b>Agent(s)</b>	Mike Watkins



## 88 TOOMBS STREET, MONCTON

<b>Size</b>	4,500 sf	<b>Details</b>	Industrial cross-dock building in accessible location
<b>Price</b>	\$7.75 psf Net	<b>Agent(s)</b>	Adam MaGee, Suzie Taylor



## 671 MALENFANT BOULEVARD, DIEPPE

[TAKE VIRTUAL TOUR](#)

<b>Size</b>	4,969 sf	<b>Details</b>	Adaptable industrial space w/ 21' clear heights and dock loading
<b>Price</b>	Please Contact	<b>Agent(s)</b>	Adam MaGee, Suzie Taylor



## 158 TOOMBS STREET, MONCTON

[TAKE VIRTUAL TOUR](#) [BUILDING F](#)

<b>Size</b>	11,200	<b>Details</b>	11,200 square feet of versatile warehouse space
<b>Price</b>	\$12.00 psf Net	<b>Agent(s)</b>	Adam MaGee, Suzie Taylor

OFFICE

INDUSTRIAL

RETAIL

SALE



# INDUSTRIAL SPACE FOR LEASE

CLICK ON THE PHOTO TO OBTAIN MORE INFORMATION ONLINE



## 450 EDINBURGH DRIVE, MONCTON

[TAKE VIRTUAL TOUR](#)

<b>Size</b>	22,500 sf	<b>Details</b>	Open warehouse space with 18' clear heights & dock loading
<b>Price</b>	\$8.00 psf Net	<b>Agent(s)</b>	Adam MaGee, Suzie Taylor



## 255 EDINBURGH DRIVE, MONCTON

[DRONE VIDEO](#)

<b>Size</b>	26,000 sf	<b>Details</b>	Industrial building with 5 dock doors and 3 grade doors
<b>Price</b>	\$15.25 psf Net	<b>Agent(s)</b>	Adam MaGee, Suzie Taylor



## 280 DESBRISAY AVENUE, MONCTON

<b>Size</b>	62,000 sf	<b>Details</b>	State-of-the-art warehouse in Moncton Industrial Park
<b>Price</b>	\$14.75 psf Net	<b>Agent(s)</b>	Adam MaGee, Suzie Taylor



## HARRISVILLE LOGISTICS PARK BUILD TO SUIT, MONCTON

<b>Size</b>	Up to 80,000 sf	<b>Details</b>	Customizable build to suit located on the Shediac Road
<b>Price</b>	Please Contact	<b>Agent(s)</b>	Jamie Smith





**COMMERCIAL SPACE | FOR LEASE**



**CUSHMAN &  
WAKEFIELD**  
Atlantic

OFFICE

INDUSTRIAL

RETAIL

SALE



# COMMERCIAL SPACE FOR LEASE

CLICK ON THE PHOTO TO OBTAIN MORE INFORMATION ONLINE



## 26 GERMAIN STREET , SAINT JOHN

<b>Size</b>	+/- 950 sf + 270 sf	<b>Details</b>	Legendary restaurant space in the heart of uptown Saint John
<b>Price</b>	\$2,200/mo Semi-Gross	<b>Agent(s)</b>	Brock Turner, Stephanie Turner



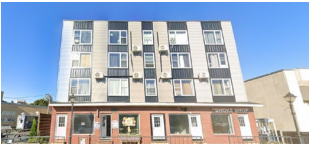
## 406 COVERDALE ROAD, RIVERVIEW

<b>Size</b>	Whole Building	<b>Details</b>	Commercial building in highly visible location
<b>Price</b>	Starting at \$2,800/mo Semi-Gross	<b>Agent(s)</b>	Donna Green



## 334 MAIN STREET, SHEDIAC

<b>Size</b>	Various suites	<b>Details</b>	Various size commercial suites in downtown building
<b>Price</b>	\$550-\$1,400/mo Gross	<b>Agent(s)</b>	Donna Green, Frederique Dangremond



## 315-323 PLEASANT STREET, MIRAMICHI

<b>Size</b>	3 units	<b>Details</b>	Second floor individual office spaces for lease
<b>Price</b>	\$850-\$1,100/mo Semi-Gross	<b>Agent(s)</b>	Jamie Smith



## 39 KING STREET, SAINT JOHN

<b>Size</b>	Various suites	<b>Details</b>	Retail complex conveniently located in the heart of Uptown Saint John
<b>Price</b>	Please Contact	<b>Agent(s)</b>	Stephanie Turner, Brock Turner



## 795 MAIN STREET, MONCTON

<b>Size</b>	+/- 427 sf	<b>Details</b>	Renovated office building W/ elevator; on Main Street
<b>Price</b>	\$995 per Month*	<b>Agent(s)</b>	Donna Green



OFFICE

INDUSTRIAL

RETAIL

SALE



# COMMERCIAL SPACE FOR LEASE

CLICK ON THE PHOTO TO OBTAIN MORE INFORMATION ONLINE



## 599 MAIN STREET, MONCTON

[TAKE VIRTUAL TOUR](#)

<b>Size</b>	+/- 812 – 2,438 sf	<b>Details</b>	Second floor commercial suites on Main Street.
<b>Price</b>	\$25.00 psf Gross	<b>Agent(s)</b>	Donna Green



## 1405 MOUNTAIN ROAD, MONCTON

<b>Size</b>	1,000 sf	<b>Details</b>	Ground-level commercial plaza, in highly visible intersection
<b>Price</b>	\$18.00 psf Net	<b>Agent(s)</b>	Adam MaGee, Suzie Taylor



## 630 PINEWOOD ROAD, RIVERVIEW

[TAKE VIRTUAL TOUR](#)

<b>Size</b>	+/- 1,200 sf	<b>Details</b>	Retail-ready space in the heart of Riverview's Commercial District
<b>Price</b>	\$2,800/mo Semi-Gross	<b>Agent(s)</b>	Donna Green



## 120 MILLENNIUM, SAINT JOHN

<b>Size</b>	+/- 2,000 sf	<b>Details</b>	Well-maintained commercial building with ample parking and easy access
<b>Price</b>	\$16.00 psf + \$7.77 psf	<b>Agent(s)</b>	Brock Turner, Stephanie Turner



## 400 CHAMPLAIN STREET, DIEPPE

[TAKE VIRTUAL TOUR](#)

<b>Size</b>	+/- 2,838 sf	<b>Details</b>	Professional office space on Champlain Street
<b>Price</b>	\$4,500/mo Gross	<b>Agent(s)</b>	Donna Green



## 696 MAIN STREET, MONCTON

[TAKE VIRTUAL TOUR](#)

<b>Size</b>	+/- 3,000 sf	<b>Details</b>	Prime Downtown Location! Ground floor commercial on Main Street.
<b>Price</b>	\$34 psf Semi-Gross	<b>Agent(s)</b>	Donna Green



OFFICE

INDUSTRIAL

RETAIL

SALE



# COMMERCIAL SPACE FOR LEASE

CLICK ON THE PHOTO TO OBTAIN MORE INFORMATION ONLINE



## 200 KAROLIE ROAD, RIVERVIEW

[DRONE VIDEO](#)

<b>Size</b>	3,275 sf	<b>Details</b>	This prime property offers high visibility in an established neighborhood.
<b>Price</b>	\$27.00 psf gross	<b>Agent(s)</b>	Jamie Smith



## 5 HAROLD ALLEN ROAD, TIMBER RIVER

[TAKE VIRTUAL TOUR](#)

<b>Size</b>	+/- 5,000 sf	<b>Details</b>	Restaurant, bakery and store as well as a residential building
<b>Price</b>	\$629,000	<b>Agent(s)</b>	Jamie Smith



## 60 QUEEN STREET, MONCTON

[TAKE VIRTUAL TOUR](#)

<b>Size</b>	5,210 sf	<b>Details</b>	Prominent ground floor commercial space ideal for office, retail or other
<b>Price</b>	\$32.50 psf Semi-Gross	<b>Agent(s)</b>	Donna Green



## 1333 MAIN STREET, MONCTON

[DRONE TOUR](#)

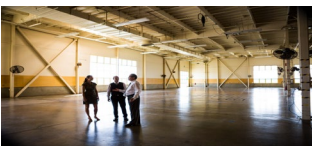
<b>Size</b>	Up to 10,457 sf	<b>Details</b>	Ground floor commercial space in Downtown Moncton with on-site parking
<b>Price</b>	\$23 psf Net	<b>Agent(s)</b>	Suzie Taylor, Adam MaGee



## 123 LUTZ STREET, MONCTON

[TAKE VIRTUAL TOUR](#)

<b>Size</b>	+/- 21,000 sf	<b>Details</b>	Versatile layout with a blend of retail, warehouse, and office space.
<b>Price</b>	\$13 - \$15 psf Net	<b>Agent(s)</b>	Adam MaGee, Suzie Taylor



## HARRISVILLE LOGISTICS PARK BUILD TO SUIT, MONCTON

<b>Size</b>	Up to 80,000 sf	<b>Details</b>	Customizable build to suit located on the Shediac Road
<b>Price</b>	Please Contact	<b>Agent(s)</b>	Jamie Smith

A woman with long dark hair, wearing a tan trench coat, black leggings, and yellow sneakers, is walking across a city street. She is looking down at her smartphone. The background shows a city street with buildings and other pedestrians.

# FOR SALE

Better never settles

17 MUR PROPERTIES

---

19 INDUSTRIAL PROPERTIES

---

22 LAND PROPERTIES

---

26 COMMERCIAL PROPERTIES

---



A modern living room with a grey sofa, a black metal coffee table, and a patterned rug. A large white circle graphic is overlaid on the wall. A chandelier hangs from the ceiling, and a floor lamp is on the right.

**MUR PROPERTIES | FOR SALE**



**CUSHMAN &  
WAKEFIELD**  
Atlantic



OFFICE

INDUSTRIAL

RETAIL

SALE



# MULTI-UNIT RESIDENTIAL PROPERTIES FOR SALE

CLICK ON THE PHOTO TO OBTAIN MORE INFORMATION ONLINE



SAINT JOHN MULTI-RESIDENTIAL INVESTMENT PORTFOLIO, SAINT JOHN			
Size	7 Assets	Details	Investment portfolio offering a diverse range of residential properties
Price	\$13,880,000	Agent(s)	Adam MaGee



**INDUSTRIAL PROPERTIES | FOR SALE**



**CUSHMAN &  
WAKEFIELD**  
Atlantic

OFFICE

INDUSTRIAL

RETAIL

SALE



# INDUSTRIAL PROPERTIES FOR SALE

CLICK ON THE PHOTO TO OBTAIN MORE INFORMATION ONLINE



## 52 PROGRESS DRIVE, ST. STEPHEN

<b>Size</b>	2,413 sf	<b>Details</b>	Industrial warehouse offering a prime location
<b>Price</b>	\$349,000	<b>Agent(s)</b>	Stephanie Turner, Brock Turner



## 53 PROGRESS DRIVE, ST. STEPHEN

<b>Size</b>	33,280 sf	<b>Details</b>	Modern, food-grade facility with lab, warehouse, and office spaces.
<b>Price</b>	\$3,000,000	<b>Agent(s)</b>	Stephanie Turner, Brock Turner



## 54 PROGRESS DRIVE, ST. STEPHEN

<b>Size</b>	7,500 sf	<b>Details</b>	Steel-frame warehouse with office, storage, and prime border location.
<b>Price</b>	\$499,000	<b>Agent(s)</b>	Stephanie Turner, Brock Turner



## 55 PROGRESS DRIVE, ST. STEPHEN

<b>Size</b>	20,424 sf	<b>Details</b>	Prime location steel-frame warehouse with grade-level loading access.
<b>Price</b>	\$899,000	<b>Agent(s)</b>	Stephanie Turner, Brock Turner



## 1160 CHAMPLAIN STREET, DIEPPE

[TAKE VIRTUAL TOUR](#)

<b>Size</b>	10,000 sf	<b>Details</b>	Commercial building for sale in prime Dieppe location
<b>Price</b>	\$2,600,000	<b>Agent(s)</b>	Adam MaGee, Suzie Taylor



## 40 ASHBURN LAKE ROAD, SAINT JOHN

<b>Size</b>	45,000 sf	<b>Details</b>	Fully occupied industrial/flex property on 7.3 acres
<b>Price</b>	Please Contact	<b>Agent(s)</b>	Bill MacAvoy



QZ

LAND | FOR SALE



CUSHMAN &  
WAKEFIELD  
Atlantic

OFFICE

INDUSTRIAL

RETAIL

SALE



# LAND PROPERTIES FOR SALE

CLICK ON THE PHOTO TO OBTAIN MORE INFORMATION ONLINE



## SALISBURY ROAD LAND, MONCTON

<b>Size</b>	72.8 Acres	<b>Details</b>	Exceptional development opportunity in a high-growth area.
<b>Price</b>	\$1,450,000	<b>Agent(s)</b>	Jamie Smith



## CHOCOLATE DRIVE, ST STEPHEN

<b>Size</b>	12 acres	<b>Details</b>	Prime development land for sale in the commercial heart of St. Stephen
<b>Price</b>	\$249,000	<b>Agent(s)</b>	Stephanie Turner, Brock Turner



## 50 PROGRESS DRIVE, ST STEPHEN

<b>Size</b>	+/- 31 acres	<b>Details</b>	+/- 31 acres of land available for sale in St. Stephen, NB
<b>Price</b>	\$387,500	<b>Agent(s)</b>	Stephanie Turner, Brock Turner



## 1857 MANAWAGONISH ROAD, SAINT JOHN

<b>Size</b>	19.94 acres	<b>Details</b>	Exceptional Development Land on the west of Saint John
<b>Price</b>	\$719,000	<b>Agent(s)</b>	Stephanie Turner, Brock Turner



## 125 MCILVEEN DRIVE, SAINT JOHN

<b>Size</b>	9,972 sf	<b>Details</b>	Industrial land in Saint John's McAllister Park, with build-to-suit option
<b>Price</b>	\$595,000	<b>Agent(s)</b>	Brock Turner, Stephanie Turner



## 382 ACADIE AVENUE, DIEPPE

<b>Size</b>	11,195 sf	<b>Details</b>	Corner lot development land situated within Dieppe
<b>Price</b>	\$250,000	<b>Agent(s)</b>	Adam MaGee, Suzie Taylor



OFFICE

INDUSTRIAL

RETAIL

SALE



# LAND PROPERTIES FOR SALE

CLICK ON THE PHOTO TO OBTAIN MORE INFORMATION ONLINE



## 15 GOLDEN GROVE ROAD, SAINT JOHN

<b>Size</b>	37,000 sf	<b>Details</b>	Corner commercial lot primed for development
<b>Price</b>	\$369,000	<b>Agent(s)</b>	Marc Gosselin



## 85 MAIN STREET, PLASTER ROCK

<b>Size</b>	1.11 Acres	<b>Details</b>	Exceptional development opportunity in Plaster Rock
<b>Price</b>	\$16,000	<b>Agent(s)</b>	Suzie Taylor, Adam MaGee



## 2337 HIGHWAY 15, IRISHTOWN

<b>Size</b>	1.29 Acres	<b>Details</b>	Agricultural/Commercial land located in Irishtown
<b>Price</b>	\$99,000	<b>Agent(s)</b>	Adam MaGee, Suzie Taylor



## 53 MAIN STREET, ST. GEORGE

<b>Size</b>	1.37 Acres	<b>Details</b>	Cleared lot on the intersection of Main Street and Riverview Avenue.
<b>Price</b>	\$45,000	<b>Agent(s)</b>	Adam MaGee, Suzie Taylor



## HIGHMEADOW PARK, SAINT JOHN

[DRONE TOUR](#)

<b>Size</b>	1.44 Acres	<b>Details</b>	Prime multi-unit residential development opportunity
<b>Price</b>	\$725,000	<b>Agent(s)</b>	Adam MaGee, Suzie Taylor



## 9501 RUE MAIN, RICHIBUCTO

<b>Size</b>	1.8 Acres	<b>Details</b>	Centrally-located in town on high-traffic corner
<b>Price</b>	\$69,000	<b>Agent(s)</b>	Donna Green



OFFICE

INDUSTRIAL

RETAIL

SALE



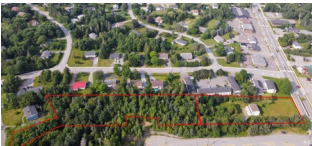
# LAND PROPERTIES FOR SALE

CLICK ON THE PHOTO TO OBTAIN MORE INFORMATION ONLINE



## 845 THORNTON AVENUE, BATHURST

<b>Size</b>	1.93 Acres	<b>Details</b>	Development land near CN railway
<b>Price</b>	\$80,000	<b>Agent(s)</b>	Adam MaGee, Suzie Taylor



## 134 HAMPTON ROAD, ROTHESAY

[DRONE TOUR](#)

<b>Size</b>	2.16 Acres	<b>Details</b>	2 lots located on Hampton Road, perfect for development
<b>Price</b>	\$669,000	<b>Agent(s)</b>	Marc Gosselin



## 241 WILSEY ROAD, FREDERICTON

<b>Size</b>	2.25 Acres	<b>Details</b>	Prime commercial land within the Fredericton Industrial Park
<b>Price</b>	\$299,000	<b>Agent(s)</b>	Adam MaGee, Suzie Taylor



## 133-161 PARK STREET, SUSSEX

<b>Size</b>	3.48 Acres	<b>Details</b>	Former CN Site with 3.48 acres of development land
<b>Price</b>	\$159,000	<b>Agent(s)</b>	Adam MaGee, Ian Franklin, Suzie Taylor



## FRAMPTON LANE LAND, MONCTON

<b>Size</b>	3.56 Acres	<b>Details</b>	3.56 acres situated in the sought-after Moncton North Area
<b>Price</b>	\$1,200,000	<b>Agent(s)</b>	Jamie Smith



## 64 MAIN STREET N, REXTON

<b>Size</b>	3.8 Acres	<b>Details</b>	Partially wooded lot in central Rexton with fenced clearing along Main Street.
<b>Price</b>	\$99,500	<b>Agent(s)</b>	Adam MaGee, Suzie Taylor

OFFICE

INDUSTRIAL

RETAIL

SALE



# LAND PROPERTIES FOR SALE

CLICK ON THE PHOTO TO OBTAIN MORE INFORMATION ONLINE



## 630 READY STREET, SAINT JOHN

<b>Size</b>	5.95 acres	<b>Details</b>	Prime 9,972 sq ft development site approved for 9-unit building.
<b>Price</b>	\$299,000	<b>Agent(s)</b>	Brock Turner, Stephanie Turner



## 10 WHITEBONE WAY, SAINT JOHN

[DRONE TOUR](#)

<b>Size</b>	10.63 Acres	<b>Details</b>	Reinforced land ready for heavy industrial use
<b>Price</b>	Please Contact	<b>Agent(s)</b>	Adam MaGee, James Collins, Suzie Taylor



## MCALLISTER DRIVE DEVELOPMENT LAND, SAINT JOHN

[DRONE TOUR](#)

<b>Size</b>	14.65 Acres	<b>Details</b>	Development site available within Eastern Saint John.
<b>Price</b>	\$895,000	<b>Agent(s)</b>	Adam MaGee, Suzie Taylor



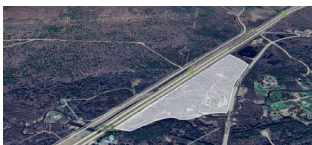
## IVAN RAND DRIVE, MONCTON

<b>Size</b>	+/- 17 Acres	<b>Details</b>	Prime development site near Downtown Event Centre. Zoned SC
<b>Price</b>	\$2,400,000	<b>Agent(s)</b>	Ian Franklin



## LOT RUE OULLETTE, GRAND FALLS

<b>Size</b>	34.1 Acres	<b>Details</b>	34.1 acres of land available for sale in the town of Grand Falls, NB
<b>Price</b>	\$2,349,000	<b>Agent(s)</b>	Jamie Smith



## GRAY ROAD LAND, PENOBISQUIS

<b>Size</b>	34.15 Acres	<b>Details</b>	34.14 acres of riverfront property located in Penobscis
<b>Price</b>	\$300,000	<b>Agent(s)</b>	Jamie Smith

OFFICE

INDUSTRIAL

RETAIL

SALE



# LAND PROPERTIES FOR SALE

CLICK ON THE PHOTO TO OBTAIN MORE INFORMATION ONLINE



## SIERRA AVENUE DEVELOPMENT, ROTHESAY

<b>Size</b>	Up to 32.58 acres	<b>Details</b>	3 parcels of up to 500 units of residential development land
<b>Price</b>	Please Contact	<b>Agent(s)</b>	Bill MacAvoy



## CAMBRIDGE ESTATES DEVELOPMENT LAND, MILLIDGEVILLE

<b>Size</b>	64.44 Acres	<b>Details</b>	Significant residential development land within the community of Millidgeville
<b>Price</b>	Please Contact	<b>Agent(s)</b>	Bill MacAvoy



## MCLAUGHLIN DEVELOPMENT LAND, MONCTON

[DRONE TOUR](#)

<b>Size</b>	87 Acres	<b>Details</b>	Prime multi-unit residential development opportunity in Moncton
<b>Price</b>	Please Contact	<b>Agent(s)</b>	Bill MacAvoy, Adam MaGee, Suzie Taylor





# COMMERCIAL PROPERTIES | FOR SALE



**CUSHMAN &  
WAKEFIELD**  
Atlantic

OFFICE

INDUSTRIAL

RETAIL

SALE



# COMMERCIAL PROPERTIES FOR SALE

CLICK ON THE PHOTO TO OBTAIN MORE INFORMATION ONLINE



## SHADOW LAWN INN, ROTHESAY

<b>Size</b>	9 room Inn	<b>Details</b>	Excellent investment opportunity to acquire a commercial/ building
<b>Price</b>	Please Contact	<b>Agent(s)</b>	Stephanie Turner, Brock Turner



## 308-310 MOUNTAIN ROAD, MONCTON

[TAKE VIRTUAL TOUR](#)

<b>Size</b>	+/- 2,641 sf	<b>Details</b>	Mixed-use property offering both commercial and residential opportunities
<b>Price</b>	\$549,000	<b>Agent(s)</b>	Jamie Smith



## 21 STONE AVENUE, MONCTON

[TAKE VIRTUAL TOUR](#)

<b>Size</b>	+/- 7,704 sf	<b>Details</b>	Excellent investment opportunity to acquire a commercial/ building
<b>Price</b>	\$975,000	<b>Agent(s)</b>	Donna Green



## 74 OHIO ROAD, SHEDIAC

<b>Size</b>	1,921 sf + 1,621 sf	<b>Details</b>	Office building with warehouse, grade loading, and government tenant.
<b>Price</b>	\$790,000	<b>Agent(s)</b>	Adam MaGee, Suzie Taylor



## 93 HAMPTON ROAD, ROTHESAY

<b>Size</b>	756 + 576 sf	<b>Details</b>	Excellent opportunity to acquire a commercial/retail building
<b>Price</b>	\$349,000	<b>Agent(s)</b>	Marc Gosselin



## 5 HAROLD ALLEN ROAD, TIMBER RIVER

[TAKE VIRTUAL TOUR](#)

<b>Size</b>	+/- 5,000 sf	<b>Details</b>	Restaurant, bakery and store as well as a residential building
<b>Price</b>	\$629,000	<b>Agent(s)</b>	Jamie Smith

OFFICE

INDUSTRIAL

RETAIL

SALE



# COMMERCIAL PROPERTIES FOR SALE

CLICK ON THE PHOTO TO OBTAIN MORE INFORMATION ONLINE



## ESTABLISHED FOOD & BEVERAGE BUSINESS, SOUTHEAST NEW BRUNSWICK


<b>Size</b>	3,708 sf	<b>Details</b>	Excellent investment to acquire established business and real estate
<b>Price</b>	Please Contact	<b>Agent(s)</b>	Marc Gosselin, Adam MaGee, Suzie Taylor



## 191 DOAK ROAD, FREDERICTON

<b>Size</b>	+/- 9,828 sf	<b>Details</b>	Office building sits on 5.56 acres with ample parking
<b>Price</b>	\$1,795,000	<b>Agent(s)</b>	Adam MaGee, Suzie Taylor





# WE DIDN'T COME THIS FAR, **JUST TO COME THIS FAR.**



**CUSHMAN &  
WAKEFIELD**  
Atlantic

## **SOLD & LEASED**

A LIST OF PROPERTIES SOLD AND  
LEASED BY OUR BROKERAGE TEAM  
IN THE LAST 30 DAYS.

# SOLD AND LEASED PROPERTIES



25 HILDEGARD DRIVE, MONCTON			
Size	+/- 4,800 sf	Details	Commercial building in highly visible location
		Agent(s)	Donna Green



**CUSHMAN &  
WAKEFIELD**  
Atlantic

**Better never settles**  
cwatlantic.com



**Donna Green**  
Vice President  
506 387 6930 Direct  
506 866 1319 Mobile

[dgreen@cwatlantic.com](mailto:dgreen@cwatlantic.com)



**Ian Franklin, CCIM**  
Vice President Emeritus  
506 863 7199 Mobile

[ifranklin@cwatlantic.com](mailto:ifranklin@cwatlantic.com)



**Marc Gosselin**  
Commercial Real Estate Advisor  
506 636 1739 Mobile

[mgosselin@cwatlantic.com](mailto:mgosselin@cwatlantic.com)



**Brock Turner**  
Commercial Real Estate Advisor  
506 608 8747 Mobile

[bturner@cwatlantic.com](mailto:bturner@cwatlantic.com)



**Adam MaGee**  
Vice President  
506 387 6928 Direct  
506 872 2507 Mobile

[amagee@cwatlantic.com](mailto:amagee@cwatlantic.com)



**Bill MacAvoy**  
Managing Director  
902 425 1872 Direct  
902 880 0445 Mobile

[bmacavoy@cwatlantic.com](mailto:bmacavoy@cwatlantic.com)



**Suzie Taylor**  
Commercial Real Estate Advisor  
506 380 1777 Mobile

[staylor@cwatlantic.com](mailto:staylor@cwatlantic.com)



**Frederique Dangremond**  
Licensed Sales Coordinator  
506 387 6925 Direct

[fdangremond@cwatlantic.com](mailto:fdangremond@cwatlantic.com)



**Mike Watkins**  
Senior Associate  
506 639 0281 Mobile  
506 652 5707 Fax

[mwatkins@cwatlantic.com](mailto:mwatkins@cwatlantic.com)



**Jamie Smith**  
Senior Associate  
506 387 4169 Mobile

[jsmith@cwatlantic.com](mailto:jsmith@cwatlantic.com)



**Stephanie Turner**  
Associate Vice President  
506 333 3442 Mobile

[sturner@cwatlantic.com](mailto:sturner@cwatlantic.com)