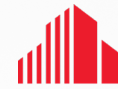


FOR DEVELOPMENT

6 Hampton Road
Rothesay, New Brunswick



CUSHMAN &
WAKEFIELD
Atlantic

Excellent Exposure

28,314 SF COMMERCIAL LAND | LIST PRICE: \$139,000

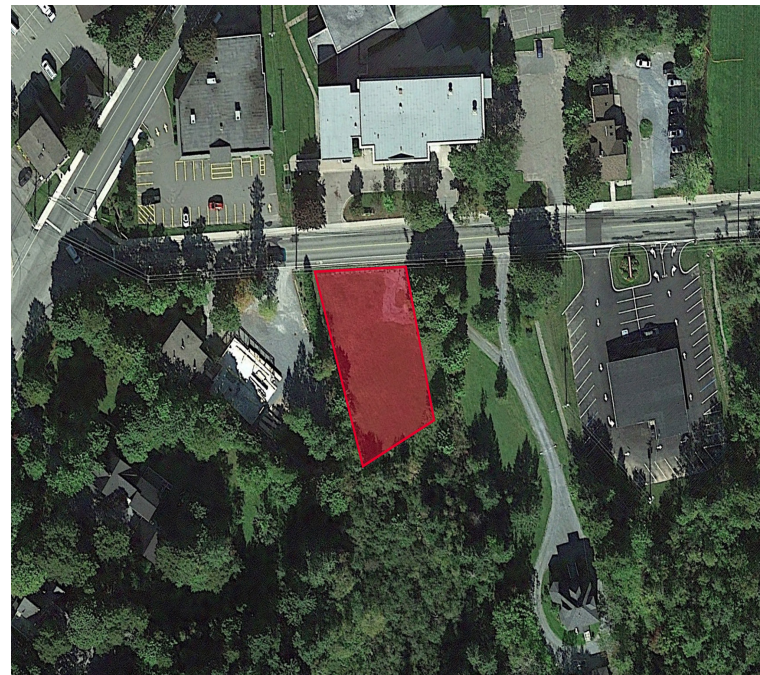
Property Highlights

Located in the heart of Rothesay, New Brunswick, this property presents the perfect opportunity to purchase vacant development land in a central location.

- 28,314 sf of prime commercial development land.
- Highly visible property with excellent frontage.
- Situated on the main thoroughfare for the town, providing great accessibility and access
- Currently zoned as Special Area (SA), allowing for mixed-use developments
- The property can be identified through PID # 00256164

Contact

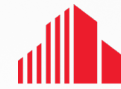
MIKE WATKINS
Senior Associate
+1 506 639 0281
mwatkins@cwatlantic.com



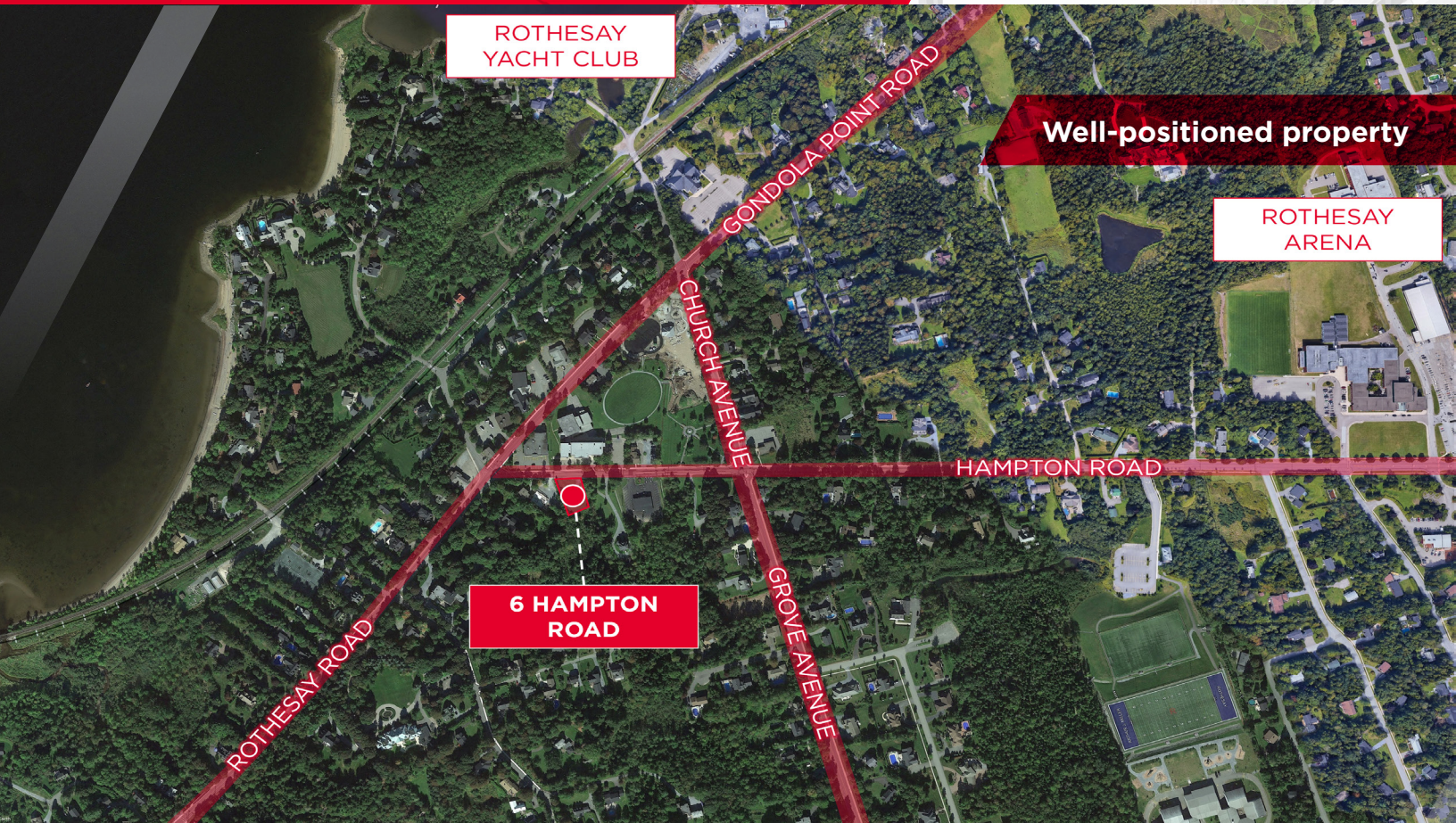
FOR DEVELOPMENT

6 Hampton Road

Rothesay, New Brunswick



CUSHMAN &
WAKEFIELD
Atlantic



Location Information

Positioned along the bustling Hampton Road, bridging the communities of Quispamsis and Rothesay. This location offers unparalleled convenience, and boasts swift access to the town centre and a thriving retail hub.

Strategically located for seamless travel, with direct links to NB-1 and the Trans-Canada Highway, this locale is a gateway to Saint John. Serving as a suburban extension of the city, it seamlessly connects neighbouring towns and communities, surrounded by a landscape dominated by residential and retail developments

Contact

MIKE WATKINS
Senior Associate
+1 506 639 0281
mwatkins@cwatlantic.com