

OFFICE

INDUSTRIAL

RETAIL

SALE

MONTHLY LISTINGS REPORT

NEWFOUNDLAND & LABRADOR | NOVEMBER 2024



**CUSHMAN &
WAKEFIELD**
Atlantic

FOR LEASE



Better never settles

4 OFFICE SPACE

6 INDUSTRIAL SPACE

01

OFFICE SPACE | FOR LEASE



**CUSHMAN &
WAKEFIELD**
Atlantic

OFFICE

INDUSTRIAL

RETAIL

SALE



OFFICE SPACE FOR LEASE

CLICK ON THE PHOTO TO OBTAIN MORE INFORMATION ONLINE



145 MCNAMARA DRIVE | SUITE 102, PARADISE

Size	3,428 sf + (2,000 sf)	Details	Ground floor office space with approximately 2,000 sf warehouse available
Price	\$15.00 psf Net	Agent(s)	Joanne Earle



145 MCNAMARA DRIVE | SUITE 201, PARADISE

Size	5,372 sf	Details	Spacious 2nd-floor office space in a highly visible commercial property
Price	\$17.00 psf Net	Agent(s)	Joanne Earle



DORSET BUILDING, 6 MOUNT CARSON AVENUE, MOUNT PEARL

Size	2,112 sf	Details	Modern 3 storey building with elevator and ample parking.
Price	\$18.00 psf Net	Agent(s)	Joanne Earle



15 HALLETT CRESCENT, ST. JOHN'S

Size	Various	Details	Accessible office in well situated building in O'Leary Industrial Park
Price	\$12.00 psf Net	Agent(s)	Joanne Earle



55 ELIZABETH AVENUE, ST. JOHN'S

Size	432 – 2,122 sf	Details	Professional office space in a well-situated iconic 3-storey office building.
Price	Please Contact	Agent(s)	Joanne Earle

FOR SALE



Better never settles

9

COMMERCIAL PROPERTIES

11

INDUSTRIAL PROPERTIES

13

LAND PROPERTIES



COMMERCIAL PROPERTIES | FOR SALE



**CUSHMAN &
WAKEFIELD**
Atlantic

OFFICE

INDUSTRIAL

RETAIL

SALE



COMMERCIAL PROPERTIES FOR SALE

CLICK ON THE PHOTO TO OBTAIN MORE INFORMATION ONLINE



1041 TOPSAIL ROAD, MOUNT PEARL

Size	+/- 4,200 SF	Details	Highly visible office building well suited for owner occupancy
Price	Please Contact	Agent(s)	Joanne Earle



71 PHILIP AVENUE, CORNER BROOK

Size	15,790 sf	Details	Redevelopment potential located on an elevation offering incredible views.
Price	\$ 479,900	Agent(s)	Joanne Earle



INDUSTRIAL PROPERTIES | FOR SALE



**CUSHMAN &
WAKEFIELD**

Atlantic

OFFICE

INDUSTRIAL

RETAIL

SALE



INDUSTRIAL PROPERTIES FOR SALE

CLICK ON THE PHOTO TO OBTAIN MORE INFORMATION ONLINE



82 WINNIPEG STREET, GOOSE BAY

Size	12,813 sf	Details	Hangar building with 2 nd level office space and direct airside access
Price	\$ 1,900,000	Agent(s)	Bill MacAvoy

03

LAND PROPERTIES | FOR SALE



**CUSHMAN &
WAKEFIELD**
Atlantic

OFFICE

INDUSTRIAL

RETAIL

SALE



LAND FOR SALE

CLICK ON THE PHOTO TO OBTAIN MORE INFORMATION ONLINE



11 CIRCULAR DRIVE, ST. ALBAN'S

Size	2.25 acres	Details	Vacant commercial land in St. Alban's, zoned Mixed Development .
Price	Please Contact	Agent(s)	Joanne Earle



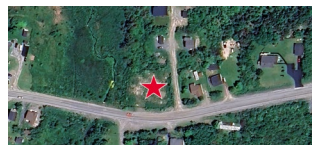
12 MAGEE ROAD, GANDER

Size	1.18 acres	Details	Vacant commercial development land with great visibility & frontage.
Price	Please Contact	Agent(s)	Joanne Earle



14 BRYAN'S ROAD, FOGO ISLAND

Size	2.30 acres	Details	Undeveloped vacant commercial land well positioned on Fogo Island.
Price	Please Contact	Agent(s)	Joanne Earle



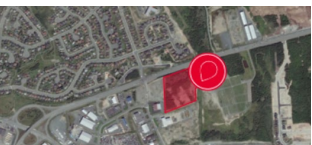
268 & 270 BLOW-ME-DOWN DRIVE, OLD PERLICAN

Size	40,075 sf	Details	Commercial development land in the village of Old Perlican.
Price	Please Contact	Agent(s)	Joanne Earle




1325-1331 TOPSAIL ROAD, PARADISE

Size	1.12 acres	Details	Development opportunity with a high profile location.
Price	Please Contact	Agent(s)	Joanne Earle



727 KENMOUNT ROAD, MOUNT PEARL

Size	6.847 acres	Details	Large cleared lot and unserviced land for development. Panoramic views!
Price	Please Contact	Agent(s)	Joanne Earle



**WE DIDN'T
COME THIS
FAR, JUST
TO COME
THIS FAR.**



**CUSHMAN &
WAKEFIELD**

Atlantic

SOLD & LEASED

A LIST OF PROPERTIES SOLD AND
LEASED BY OUR BROKERAGE TEAM
IN THE LAST 30 DAYS.

SOLD AND LEASED PROPERTIES



2 BRUCE STREET, MOUNT PEARL			
Size	20,000 sf	Details	Open warehouse space with demised office & showroom area.
Price	\$13.00 psf Net	Agent(s)	Joanne Earle



**CUSHMAN &
WAKEFIELD**
Atlantic

Better never settles
cwatlantic.com



Joanne Earle
Senior Associate
709 576 3777 Direct
709 699 6832 Mobile

jearle@cwatlantic.com