

FOR LEASE
1329 Port Hill Station Road
Tyne, Valley



Compact Commercial Space

528 SF AVAILABLE

PROPERTY HIGHLIGHTS

Well-positioned multi-tenant commercial property offering a boutique space within the community of Tyne Valley, PE

- Well-maintained commercial building nestled on a 10,018 sf lot.
- Cozy open concept space, allowing for a variety of retail uses or as a professional office.
- Ample natural light throughout.
- Welcoming reception area.
- Well-positioned with great exposure onto Port Hill Station Road.
- Priority parking available for customers.
- Potential for conversion to residential apartment/studio.

LOCATION INFORMATION

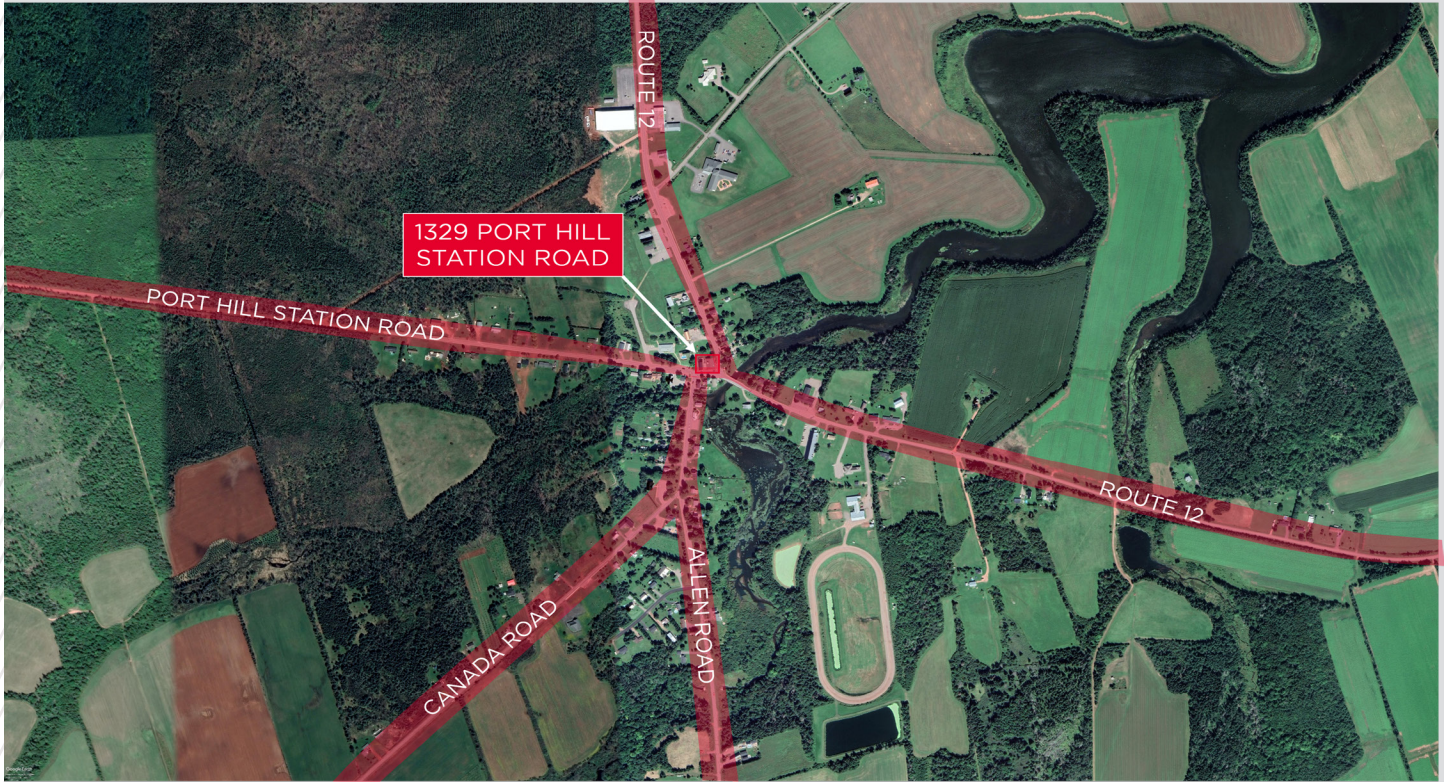
- Popular commercial property situated within the quaint and welcoming community of Tyne Valley.
- Originally known as “The Landing” the area is known for its agricultural work, with 1.8% of total farms in P.E.I. coming from the area.
- Strategically positioned at the crossroads of Port Hill Station Road and Route 12, providing additional access to the Western portion of the province.
- Located 31 km from Summerside (30 minutes) and 88 km from Charlottetown (15 minutes)

Contact

ANN WORTH
Commercial Real Estate Advisor
+1 902 626 9666
aworth@cwatlantic.com

©2024 Cushman & Wakefield. All rights reserved. The information contained in this communication is strictly confidential. This information has been obtained from sources believed to be reliable but has not been verified. No warranty or representation, express or implied, is made as to the condition of the property (or properties) referenced herein or as to the accuracy or completeness of the information contained herein, and same is submitted subject to errors, omissions, change of price, rental or other conditions, withdrawal without notice, and to any special listing conditions imposed by the property owner(s). Any projections, opinions or estimates are subject to uncertainty and do not signify current or future property performance.

FOR LEASE
1329 Port Hill Station Road
Tyne, Valley



DEMOGRAPHICS | TYNE VALLEY, PE (25 KM RADIUS)

Population	27,146
Daytime Population	22,198
Total Households	11,711
Avg. Household Size	2.3
Avg Household Income	\$77,980
Avg. Age	44.5
Female Average Age	43.4
Male Average Age	45.6

Contact

ANN WORTH
Commercial Real Estate Advisor
+1 902 626 9666
aworth@cwatlantic.com

©2024 Cushman & Wakefield. All rights reserved. The information contained in this communication is strictly confidential. This information has been obtained from sources believed to be reliable but has not been verified. No warranty or representation, express or implied, is made as to the condition of the property (or properties) referenced herein or as to the accuracy or completeness of the information contained herein, and same is submitted subject to errors, omissions, change of price, rental or other conditions, withdrawal without notice, and to any special listing conditions imposed by the property owner(s). Any projections, opinions or estimates are subject to uncertainty and do not signify current or future property performance.

FOR LEASE
1329 Port Hill Station Road
Tyne, Valley



**CUSHMAN &
WAKEFIELD**
Atlantic



©2024 Cushman & Wakefield. All rights reserved. The information contained in this communication is strictly confidential. This information has been obtained from sources believed to be reliable but has not been verified. No warranty or representation, express or implied, is made as to the condition of the property (or properties) referenced herein or as to the accuracy or completeness of the information contained herein, and same is submitted subject to errors, omissions, change of price, rental or other conditions, withdrawal without notice, and to any special listing conditions imposed by the property owner(s). Any projections, opinions or estimates are subject to uncertainty and do not signify current or future property performance.

FOR LEASE
1329 Port Hill Station Road
Tyne, Valley



Excellent Natural Light



Welcoming Reception



Several Ideal Uses!

FOR LEASE
1329 Port Hill Station Road
Tyne, Valley



**CUSHMAN &
WAKEFIELD**
Atlantic



©2024 Cushman & Wakefield. All rights reserved. The information contained in this communication is strictly confidential. This information has been obtained from sources believed to be reliable but has not been verified. No warranty or representation, express or implied, is made as to the condition of the property (or properties) referenced herein or as to the accuracy or completeness of the information contained herein, and same is submitted subject to errors, omissions, change of price, rental or other conditions, withdrawal without notice, and to any special listing conditions imposed by the property owner(s). Any projections, opinions or estimates are subject to uncertainty and do not signify current or future property performance.