



**CUSHMAN &  
WAKEFIELD**  
Atlantic

**NET RENT STARTING AT \$10.00 PSF!**

**FOR LEASE**

**3075 DEVONSHIRE AVENUE  
HALIFAX, NS**

**UP TO 6,000 SF**

**GROUND FLOOR  
COMMERCIAL SPACE**

200-1741 Lower Water Street  
Halifax, NS B3J 0J2  
Main +1 902 425 1444  
[cwatlantic.com](http://cwatlantic.com)

**FOR LEASE**

The Junction | 3075 Devonshire Avenue  
Halifax, Nova Scotia



**High Traffic Location  
With Excellent Exposure**



**UP TO 6,000 SF COMMERCIAL | LEASE RATE: \$10.00 PSF NET**

### PROPERTY HIGHLIGHTS

#### Property Type

Ground floor commercial space within a 9-storey luxury apartment community.

#### Location

Situated on the corner of Devonshire Avenue and Barrington Street in Halifax's North End.

#### Property Features

This property offers potential tenants with a blank slate space, allowing for a great level of customization based on tenants needs/wants. Floor to ceiling windows offers ample natural light, and great exposure/frontage onto a high traffic arterial route.

#### Available Space

Ground Floor: Up to 6,000 sf  
Additional Rent: \$9.00 psf (est)

#### Contact

ALEC CRANSTON  
Senior Associate  
+1 902 789 2477  
acranston@cwatlantic.com



**OPEN CONCEPT  
COMMERCIAL SPACE**



**CONVENIENTLY  
LOCATED PROPERTY  
ON THE HALIFAX  
PENINSULA**



**CLOSE PROXIMITY  
TO DOWNTOWN  
HALIFAX**



**CUSTOMIZABLE SPACE  
BASED ON TENANT  
REQUIREMENTS**



**STOREFRONT WINDOWS  
OFFER AMPLE NATURAL  
LIGHT**



**QUICK ACCESS TO  
BOTH BRIDGES**

#### Tenant Incentive

- Contact Alec Cranston for more information



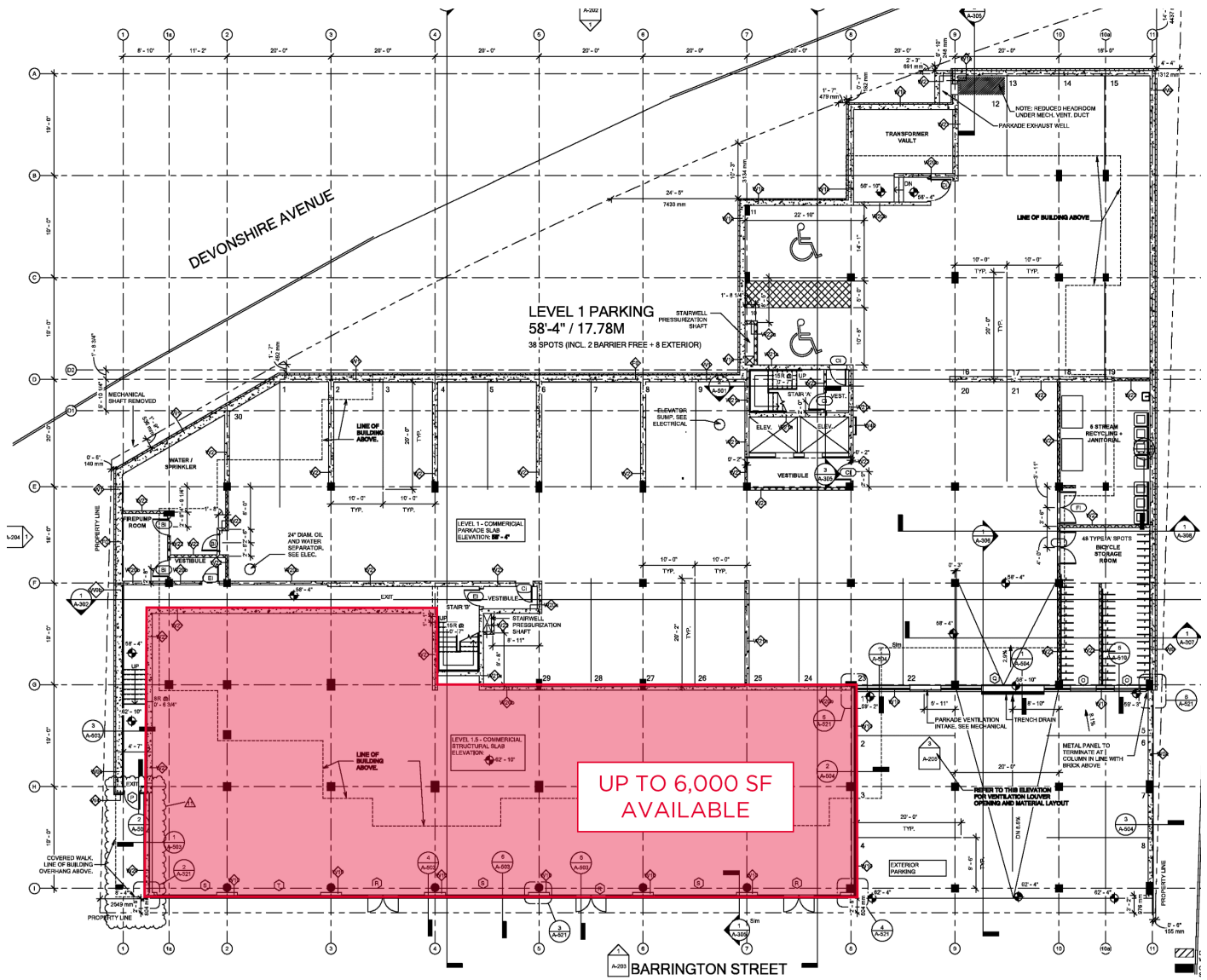
## Location Information

Ideally situated on the corner of Devonshire Avenue and Barrington Street, a significant arterial route allowing direct access to Mainland Halifax, and Downtown Halifax, while Devonshire Avenue, provides a quick route to the North End of Halifax, including the historic Hydrostone Market district, along with the amazing selection of amenities nearby. Strategically positioned with great accessibility to both the McDonald and McKay Bridges, providing short travel times by car or public transit to Dartmouth and surrounding communities, including the commercial node of Dartmouth Crossing.

## Contact

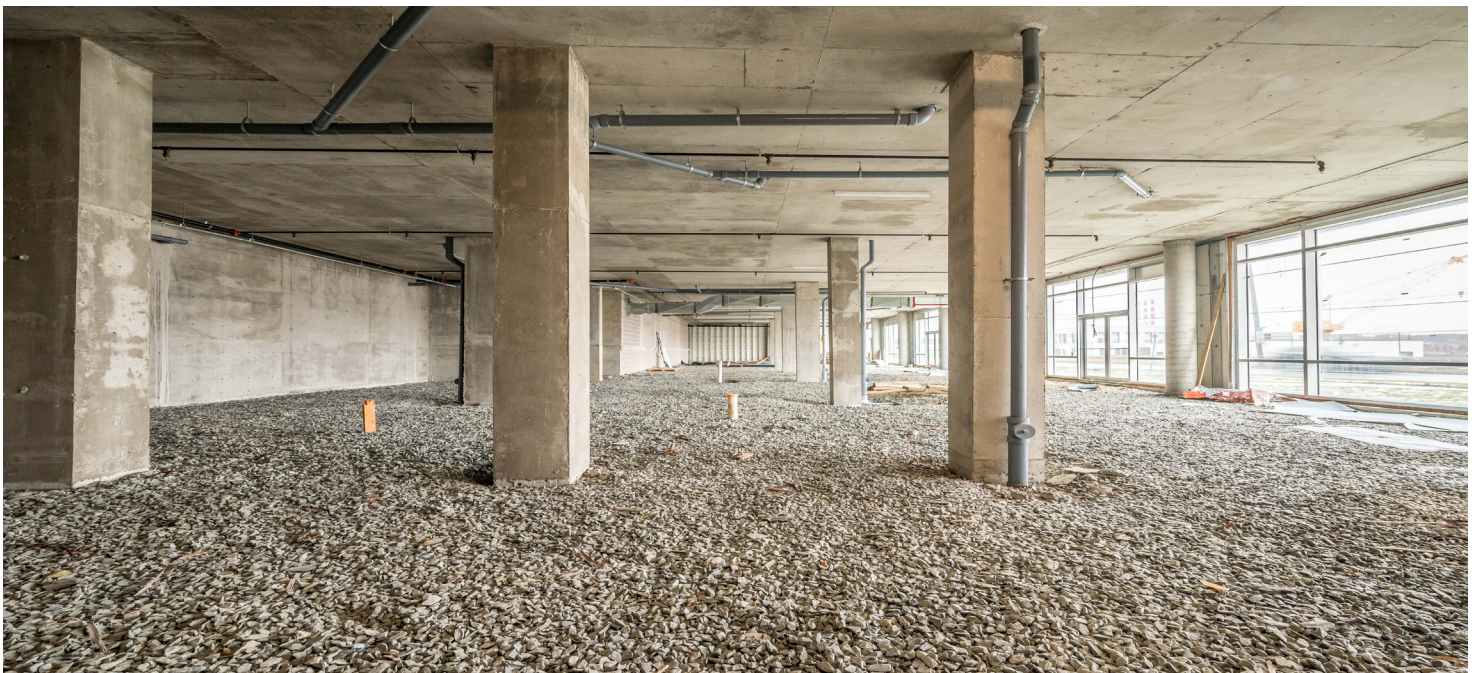
ALEC CRANSTON  
Senior Associate  
+1 902 789 2477  
[acranston@cwatlantic.com](mailto:acranston@cwatlantic.com)

# Illustrative Floor Plan



## Contact

ALEC CRANSTON  
Senior Associate  
+1 902 789 2477  
acranston@cwatlantic.com



## Contact

ALEC CRANSTON  
Senior Associate  
+1 902 789 2477  
[acranston@cwatlantic.com](mailto:acranston@cwatlantic.com)