

# MONTHLY LISTINGS REPORT

Nova Scotia | September 2023

# FOR LEASE



OFFICE SPACE FOR LEASE

---

INDUSTRIAL SPACE FOR LEASE

---

COMMERCIAL/RETAIL SPACE FOR LEASE

---

# OFFICE SPACE FOR LEASE

CLICK ON THE PHOTO TO OBTAIN MORE INFORMATION ONLINE



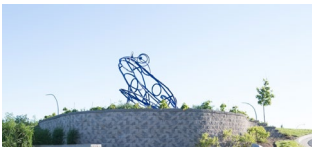
103 OCHTERLONEY STREET, DARTMOUTH			
<b>Size</b>	+/- 1,728	<b>Details</b>	Two-level modern office suite, perfect for small professional service firms
<b>Price</b>	\$15.00 psf Net	<b>Agent(s)</b>	Alec Cranston



202 BROWNLOW AVENUE   UNIT 575, DARTMOUTH			
<b>Size</b>	5,877sf	<b>Details</b>	Ground floor open concept commercial/industrial space with visibility
<b>Price</b>	Please Contact	<b>Agent(s)</b>	James Collins



202 BROWNLOW AVENUE   UNIT 600, DARTMOUTH			
<b>Size</b>	+/- 839 sf	<b>Details</b>	Professional office space with reception, and private offices.
<b>Price</b>	\$13.75 psf Net	<b>Agent(s)</b>	Mike Vaughan



BLUEFROG CAMPUS, 130 EILEEN STUBBS   Units: 206, 225, DARTMOUTH			
<b>Size</b>	Up to 2,990 sf	<b>Details</b>	Various spaces in the Bluefrog Campus with lots of common amenities.
<b>Price</b>	Please Contact	<b>Agent(s)</b>	Alec Cranston



BLUEFROG CAMPUS, 120 EILEEN STUBBS   Units: 102, 200, 206, DARTMOUTH			
<b>Size</b>	Up to 30,040 sf	<b>Details</b>	Various spaces in the Bluefrog Campus with lots of common amenities.
<b>Price</b>	Please Contact	<b>Agent(s)</b>	Alec Cranston

# OFFICE SPACE FOR LEASE

CLICK ON THE PHOTO TO OBTAIN MORE INFORMATION ONLINE



## 61 BLUEWATER ROAD, BEDFORD

<b>Size</b>	+/- 4,607 sf	<b>Details</b>	Two-level office unit with demising potential located in Bedford.
<b>Price</b>	\$14.00 psf Net	<b>Agent(s)</b>	Steven Dexter, James Collins



## 2737 JOSEPH HOWE DRIVE, HALIFAX

[VIEW 360 TOUR](#)

<b>Size</b>	22,000 sf	<b>Details</b>	Large modern office space with kitchen and many small breakout rooms.
<b>Price</b>	Please Contact	<b>Agent(s)</b>	Bill MacAvoy

# INDUSTRIAL SPACE FOR LEASE

CLICK ON THE PHOTO TO OBTAIN MORE INFORMATION ONLINE



81 WRIGHT AVENUE, DARTMOUTH			
<b>Size</b>	24,075 sf	<b>Details</b>	Significant flex-industrial space within the Burnside Business Park..
<b>Price</b>	\$17.00 psf Net	<b>Agent(s)</b>	James Collins, QPCR



435 HIGNEY AVENUE, DARTMOUTH			
<b>Size</b>	Up to 30,000 sf	<b>Details</b>	Fully customizable new construction commercial building in Burnside
<b>Price</b>	\$17.00 psf Net	<b>Agent(s)</b>	Steven Dexter, James Collins, QPCR



30 SIMMONDS DRIVE, DARTMOUTH			
<b>Size</b>	5,760 sf	<b>Details</b>	Flex-industrial space with two grade-level doors and 14' high ceilings.
<b>Price</b>	\$6.75 psf Net	<b>Agent(s)</b>	James Collins, QPCR



MONAGHAN SQUARE, 6140 YOUNG STREET, HALIFAX			
<b>Size</b>	913 sf	<b>Details</b>	Ground floor industrial style space with high ceilings in retail plaza.
<b>Price</b>	Please Contact	<b>Agent(s)</b>	Jamie Ferguson

# COMMERCIAL/RETAIL SPACE FOR LEASE

CLICK ON THE PHOTO TO OBTAIN MORE INFORMATION ONLINE



## 550 HIGHWAY 2, ELMSDALE

<b>Size</b>	+/- 11,000 sf	<b>Details</b>	Prime ground-level retail space with frontage onto Sackville Drive
<b>Price</b>	\$18.00 psf Net	<b>Agent(s)</b>	James Collins   Alec Cranston



## 585 SACKVILLE DRIVE | 2, LOWER SACKVILLE

<b>Size</b>	2,650 sf	<b>Details</b>	Prime ground-level end cap retail space with frontage onto Sackville Dr.
<b>Price</b>	Please Contact	<b>Agent(s)</b>	Jamie Ferguson



## 3075 DEVONSHIRE AVENUE, Halifax

<b>Size</b>	+/- 3,250 sf	<b>Details</b>	Open concept commercial space with frontage onto Barrington Street
<b>Price</b>	Please Contact	<b>Agent(s)</b>	Alec Cranston



## 1333 SOUTH PARK STREET, HALIFAX

<b>Size</b>	9,551 sf	<b>Details</b>	Ground floor commercial space within a 21-storey apartment building.
<b>Price</b>	\$17.00 psf Semi-Gross	<b>Agent(s)</b>	Alec Cranston



## THE KEEP, 6112 QUINPOOL ROAD, HALIFAX

<b>Size</b>	2,634-2,700 sf	<b>Details</b>	Ground floor retail, busy corner of main arterial road. Only 2 units left!
<b>Price</b>	\$35.00 psf Net	<b>Agent(s)</b>	Steven Dexter

# COMMERCIAL/RETAIL SPACE FOR LEASE

CLICK ON THE PHOTO TO OBTAIN MORE INFORMATION ONLINE



## 1881 BRUNSWICK STREET, HALIFAX

<b>Size</b>	878-2,500 sf	<b>Details</b>	Floor to ceiling windows, open concept space in a prime location.
<b>Price</b>	\$18.00 psf Net	<b>Agent(s)</b>	Alec Cranston



## 6140 QUINPOOL ROAD, HALIFAX

<b>Size</b>	Up to 2,300 sf	<b>Details</b>	Ground floor and lower-level retail space with barrier free access.
<b>Price</b>	\$30.00 psf Gross	<b>Agent(s)</b>	Steven Dexter



## MONAGHAN SQUARE, 6140 YOUNG STREET, HALIFAX

<b>Size</b>	2,250 sf	<b>Details</b>	Open concept full-service restaurant space within retail plaza.
<b>Price</b>	Please Contact	<b>Agent(s)</b>	Jamie Ferguson

# FOR SALE

COMMERCIAL PROPERTIES FOR SALE

---

INVESTMENT PROPERTIES FOR SALE

---

INDUSTRIAL AND LAND FOR SALE

---





# COMMERCIAL AND INVESTMENT PROPERTIES FOR SALE

CLICK ON THE PHOTO TO OBTAIN MORE INFORMATION ONLINE



LARCH STREET STUDENT HOUSING PORTFOLIO, HALIFAX			
<b>Size</b>	2 Properties	<b>Details</b>	Multi-residential student housing within Halifax's South End
<b>Price</b>	\$3,400,000	<b>Agent(s)</b>	Bill MacAvoy



ESTABLISHED FOOD & BEVERAGE BUSINESS, HALIFAX			
<b>Size</b>	TBC	<b>Details</b>	Excellent investment to acquire established food & beverage business
<b>Price</b>	Please Contact	<b>Agent(s)</b>	Bill MacAvoy



5542/5546 MACARA & 5543 BILBY STREET, HALIFAX			
<b>Size</b>	9,500 sf	<b>Details</b>	Development land available in the North End; Hotel use pre-approved
<b>Price</b>	Please Contact	<b>Agent(s)</b>	Bill MacAvoy   Cameron Harding



PICTOU COUNTY MULTI-RESIDENTIAL PORTFOLIO, NEW GLASGOW			
<b>Size</b>	46 units/12 properties	<b>Details</b>	Fully rented with waiting list, multi-residential investment portfolio.
<b>Price</b>	Please Contact	<b>Agent(s)</b>	Bill MacAvoy



125 CORNWALL ROAD, BLOCKHOUSE			
<b>Size</b>	2,013 sf   3.52 acres	<b>Details</b>	Building and land available in the community of Blockhouse, NS
<b>Price</b>	\$899,900	<b>Agent(s)</b>	Mike Vaughan



NEW GLASGOW MULTI-RESIDENTIAL PORTFOLIO, NEW GLASGOW			
<b>Size</b>	4 buildings	<b>Details</b>	Multi-residential portfolio with development site in New Glasgow.
<b>Price</b>	Please Contact	<b>Agent(s)</b>	Jamie Ferguson

# COMMERCIAL AND INVESTMENT PROPERTIES FOR SALE

CLICK ON THE PHOTO TO OBTAIN MORE INFORMATION ONLINE



## 1675 OXFORD STREET | THE COMMODORE, HALIFAX

<b>Size</b>	26 units/100 beds	<b>Details</b>	Fully rented, 26 unit multi-residential investment with a steady income.
<b>Price</b>	Please Contact	<b>Agent(s)</b>	Steven Dexter



## PICTOU COUNTY MULTI-RESIDENTIAL PORTFOLIO, NEW GLASGOW

<b>Size</b>	46 units/12 properties	<b>Details</b>	Fully rented with waiting list, multi-residential investment portfolio.
<b>Price</b>	\$6,000,000	<b>Agent(s)</b>	James Collins, QPCR

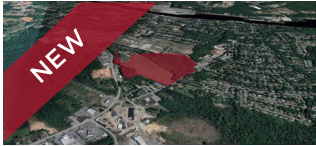


## 37 FIELDING AVENUE, DARTMOUTH

<b>Size</b>	36,925 sf	<b>Details</b>	Industrial building with small office buildout in central Burnside
<b>Price</b>	\$5,900,000	<b>Agent(s)</b>	James Collins

# LAND FOR SALE

CLICK ON THE PHOTO TO OBTAIN MORE INFORMATION ONLINE



## 370 JUBILEE ROAD | DEVELOPMENT LAND, BRIDGEWATER

<b>Size</b>	38.65 acres	<b>Details</b>	Residential development land with approved development plan.
<b>Price</b>	Please contact	<b>Agent(s)</b>	Steven Dexter



## WELLINGTON CONNECTOR LANDS, GOFFS

<b>Size</b>	+/- 546.5 acres	<b>Details</b>	Commercial & residential development land situated in Goffs
<b>Price</b>	Please contact	<b>Agent(s)</b>	Steven Dexter



## HINES ROAD LAND, EASTERN PASSAGE

<b>Size</b>	+/- 24.7 acres	<b>Details</b>	Vacant land ideally positioned for industrial development
<b>Price</b>	Please contact	<b>Agent(s)</b>	Steven Dexter   James Collins



## PORTERS LAKE PORTFOLIO, EASTERN SHORE

<b>Size</b>	+/- 259.7 acres	<b>Details</b>	Residential development land ideally located in Porters Lake
<b>Price</b>	Please contact	<b>Agent(s)</b>	Steven Dexter



## TRURO HEIGHTS LAND, TRURO

<b>Size</b>	+/- 59.9 acres	<b>Details</b>	Bulk land adjacent to Highway 102, significant development opportunity
<b>Price</b>	Please contact	<b>Agent(s)</b>	Steven Dexter



## HINES ROAD PORTFOLIO, EASTERN PASSAGE

<b>Size</b>	+/- 57.8 acres	<b>Details</b>	Development land ideal for industrial or residential.
<b>Price</b>	Please contact	<b>Agent(s)</b>	Steven Dexter

# LAND FOR SALE

CLICK ON THE PHOTO TO OBTAIN MORE INFORMATION ONLINE



## JEDDORE WILDERNESS LAND, HEAD OF JEDDORE

<b>Size</b>	+/- 122 acres	<b>Details</b>	Undisturbed land with significant water frontage.
<b>Price</b>	Please contact	<b>Agent(s)</b>	Steven Dexter



## LAKE ECHO PORTFOLIO , EASTERN SHORE

<b>Size</b>	+/- 134.3 acres	<b>Details</b>	Residential development land situated within Lake Echo
<b>Price</b>	Please contact	<b>Agent(s)</b>	Steven Dexter



## LAKEVIEW LAND, WAVERLEY

<b>Size</b>	+/- 215.7 acres	<b>Details</b>	Large parcel of land in Waverley, adjacent to Highway 118.
<b>Price</b>	Please contact	<b>Agent(s)</b>	Steven Dexter



## GLENGARRY ESTATES PORTFOLIO, TIMBERLEA

<b>Size</b>	+/- 3.9 acres	<b>Details</b>	Residential development land in a quite suburban community.
<b>Price</b>	Please contact	<b>Agent(s)</b>	Steven Dexter

# SOLD & LEASED



A LIST OF PROPERTIES SOLD AND  
LEASED BY OUR BROKERAGE TEAM IN  
THE LAST 30 DAYS.

---

# SOLD AND LEASED PROPERTIES



585 SACKVILLE DRIVE   1, LOWER SACKVILLE	
<b>Size</b>	5,300 sf
<b>Details</b>	Prime ground-level retail space with frontage onto Sackville Drive
<b>Agent(s)</b>	Jamie Ferguson



**James Collins**  
 Vice President  
 902 425 1444 Direct  
 902 489 0015 Mobile

[jcollins@cwatlantic.com](mailto:jcollins@cwatlantic.com)



**Alec Cranston**  
 Senior Associate  
 902 789 2477 Mobile

[acranston@cwatlantic.com](mailto:acranston@cwatlantic.com)



**Steven Dexter**  
 Senior Vice President  
 902 425 0377 Direct  
 902 222 2399 Mobile

[sdexter@cwatlantic.com](mailto:sdexter@cwatlantic.com)



**Stephen Himmelman**  
 Commercial Real Estate Advisor  
 902 209 0768 Mobile

[shimmelman@cwatlantic.com](mailto:shimmelman@cwatlantic.com)



**Jamie Ferguson**  
 Commercial Sales & Leasing  
 902 425 4009 Direct  
 902 209 5123 Mobile

[jferguson@cwatlantic.com](mailto:jferguson@cwatlantic.com)



**Bill MacAvoy**  
 Managing Director  
 902 425 1872 Direct  
 902 880 0445 Mobile  
 902 425 7374 Fax

[bmacavoy@cwatlantic.com](mailto:bmacavoy@cwatlantic.com)



**Mike Vaughan**  
 Commercial Real Estate Advisor  
 902 482 2999 Direct  
 902 452 3692 Mobile

[mvaughan@cwatlantic.com](mailto:mvaughan@cwatlantic.com)



**Cameron Hardng**  
 Commercial Real Estate Advisor  
 902 414 7264 Mobile

[charding@cwatlantic.com](mailto:charding@cwatlantic.com)

[cwatlantic.com](http://cwatlantic.com)