

# MONTHLY LISTINGS REPORT

New Brunswick | May 2023

# FOR LEASE

OFFICE SPACE FOR LEASE

---

INDUSTRIAL SPACE FOR LEASE

---

COMMERCIAL/RETAIL SPACE FOR LEASE

---



# OFFICE SPACE FOR LEASE

CLICK ON THE PHOTO TO OBTAIN MORE INFORMATION ONLINE



## 281 ST. GEORGE STREET, MONCTON

[TAKE VIRTUAL TOUR](#)

<b>Size</b>	1,600 sf	<b>Details</b>	Ground floor, office or versatile flex space in high traffic location
<b>Price</b>	\$11.00 psf Net	<b>Agent(s)</b>	Donna Green



## 988 CHAMPLAIN STREET, DIEPPE

[TAKE VIRTUAL TOUR](#)

<b>Size</b>	2,000 sf	<b>Details</b>	2 <sup>nd</sup> floor office space within a highly visible property in Dieppe.
<b>Price</b>	\$2,900 monthly/gross	<b>Agent(s)</b>	Donna Green



## 245 COLLISHAW STREET, MONCTON

<b>Size</b>	2,971 – 4,919 sf	<b>Details</b>	Prime commercial space available in Moncton
<b>Price</b>	\$10.00 - \$14.00 psf Net	<b>Agent(s)</b>	Donna Green



## 185 ACADIE AVENUE, DIEPPE

[TAKE VIRTUAL TOUR](#)

<b>Size</b>	1,464 sf	<b>Details</b>	Prime 2 <sup>nd</sup> floor office space within downtown Dieppe
<b>Price</b>	\$16.00 psf Net	<b>Agent(s)</b>	Donna Green



## 196 ROBINSON COURT, MONCTON

<b>Size</b>	+/- 1,000 and 2,000 sf	<b>Details</b>	Completely renovated office space(s) in the heart of Downtown Moncton
<b>Price</b>	\$18.00 psf Gross	<b>Agent(s)</b>	Donna Green



## 860 MAIN STREET, MONCTON

[TAKE VIRTUAL TOUR](#)

<b>Size</b>	+/- 949 to 1,500 sf	<b>Details</b>	Downtown office space with great views and ample natural light
<b>Price</b>	\$13.00 psf Net	<b>Agent(s)</b>	Donna Green



# OFFICE SPACE FOR LEASE

CLICK ON THE PHOTO TO OBTAIN MORE INFORMATION ONLINE



## 232-236 ST. GEORGE STREET, MONCTON

[TAKE VIRTUAL TOUR](#)

<b>Size</b>	+/- 257 to 10,183 sf	<b>Details</b>	Various suites, 5-storey multi-tenant office building close to downtown
<b>Price</b>	\$18 psf Gross	<b>Agent(s)</b>	Donna Green



## 50 DRISCOLL CRESCENT, MONCTON

<b>Size</b>	+/- 593 sf	<b>Details</b>	Professional office space available on second floor
<b>Price</b>	Please Contact	<b>Agent(s)</b>	Donna Green



## 16 CHURCH STREET, MONCTON

[TAKE VIRTUAL TOUR](#)

<b>Size</b>	+/- 3,600 sf	<b>Details</b>	Stylish open space with private offices, meeting rooms & large kitchen
<b>Price</b>	\$24.00/ sf semi-gross	<b>Agent(s)</b>	Donna Green



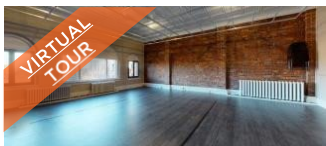
## 233-235 ST. GEORGE STREET, MONCTON

<b>Size</b>	+/- 1,700 sf	<b>Details</b>	Main floor offices with on site parking
<b>Price</b>	\$11.00 psf Net	<b>Agent(s)</b>	Donna Green



## 123 HALIFAX STREET, MONCTON

<b>Size</b>	Up to 63,230 sf	<b>Details</b>	Moncton's newly remodeled, stylish office complex in the West End.
<b>Price</b>	\$18.00 psf Gross	<b>Agent(s)</b>	Donna Green, Ian Franklin



## 698 MAIN STREET, MONCTON

[TAKE VIRTUAL TOUR](#)

<b>Size</b>	+/- 2,000 sf	<b>Details</b>	Versatile downtown studio space with unique architectural elements
<b>Price</b>	\$4,000/month Gross	<b>Agent(s)</b>	Donna Green

# OFFICE SPACE FOR LEASE

CLICK ON THE PHOTO TO OBTAIN MORE INFORMATION ONLINE



## 679-695 MAIN STREET, MONCTON

[TAKE VIRTUAL TOUR](#)

<b>Size</b>	1,246 – 5,816 sf	<b>Details</b>	3-storey Italianate sandstone building located in Downtown Moncton.
<b>Price</b>	\$17.00 psf Net	<b>Agent(s)</b>	Adam MaGee, Jamie Smith



## 599 MAIN STREET, MONCTON

<b>Size</b>	812 – 1,350 sf	<b>Details</b>	Appealing 2 <sup>nd</sup> floor office spaces in downtown Moncton
<b>Price</b>	\$1,500- \$2,025/month Gross	<b>Agent(s)</b>	Donna Green



## 880 MAIN STREET, MONCTON

<b>Size</b>	+/- 2,000 sf	<b>Details</b>	Located on one of Downtown Moncton's most high-traffic corners
<b>Price</b>	\$24.00 psf Semi-Gross	<b>Agent(s)</b>	Donna Green



## 1000 ST. GEORGE BOULEVARD, MONCTON

<b>Size</b>	+/- 6,534 sf	<b>Details</b>	Modern office space in Moncton. Perfect turnkey opportunity
<b>Price</b>	Please Contact	<b>Agent(s)</b>	Adam MaGee

# COMMERCIAL/RETAIL SPACE FOR LEASE

CLICK ON THE PHOTO TO OBTAIN MORE INFORMATION ONLINE



## 245 COLLISHAW STREET, MONCTON

<b>Size</b>	2,971 – 4,919 sf	<b>Details</b>	Prime commercial space available in Moncton
<b>Price</b>	\$10.00 - \$14.00 psf Net	<b>Agent(s)</b>	Donna Green



## 210 MILLENNIUM BOULEVARD, MONCTON

<b>Size</b>	7,560 sf	<b>Details</b>	Single tenant service commercial property situated on a high traffic road.
<b>Price</b>	\$10.95 psf Net	<b>Agent(s)</b>	Adam MaGee   Ian Franklin



## 1405 MOUNTAIN ROAD, MONCTON

<b>Size</b>	1,800 sf	<b>Details</b>	Ground level commercial space with excellent exposure.
<b>Price</b>	\$17.75 psf	<b>Agent(s)</b>	Adam MaGee



## 49 FOUNDRY STREET, MONCTON

<b>Size</b>	+/- 1,352 - 12,582 sf	<b>Details</b>	3 ground floor commercial units available in Downtown Moncton
<b>Price</b>	\$14.00 psf Net	<b>Agent(s)</b>	Adam MaGee, Jamie Smith



## 880 MAIN STREET, MONCTON

<b>Size</b>	+/- 2,000 sf	<b>Details</b>	Located on one of Downtown Moncton's most high-traffic corners
<b>Price</b>	\$24.00 psf Semi-Gross	<b>Agent(s)</b>	Donna Green

# COMMERCIAL/RETAIL SPACE FOR LEASE

CLICK ON THE PHOTO TO OBTAIN MORE INFORMATION ONLINE



698 MAIN STREET, MONCTON		<a href="#">TAKE VIRTUAL TOUR</a>	
<b>Size</b>	+/- 3,000 sf	<b>Details</b>	Versatile downtown studio space with unique architectural elements
<b>Price</b>	\$2,000 -\$4,000/month Gross	<b>Agent(s)</b>	Donna Green



961 MAIN STREET, MONCTON			
<b>Size</b>	Up to +/- 6,500 sf	<b>Details</b>	Prime Main Street location near Avenir Centre
<b>Price</b>	\$19.00 sf Net	<b>Agent(s)</b>	Adam MaGee, Jamie Smith



488 MAIN STREET, SHEDIAC		<a href="#">TAKE VIRTUAL TOUR</a>	
<b>Size</b>	Up to 1,482 sf	<b>Details</b>	Brand new retail space currently in development
<b>Price</b>	\$22.00 psf Net	<b>Agent(s)</b>	Adam MaGee, Jamie Smith



THE JUNCTION URBAN VILLAGE, MONCTON			
<b>Size</b>	+/- 3.2 acres	<b>Details</b>	Prime opportunity in downtown Moncton's new Entertainment District
<b>Price</b>	Please Contact	<b>Agent(s)</b>	Ian Franklin



540 PINWOOD ROAD, RIVERVIEW			
<b>Size</b>	+/- 1,636 – 3,505 sf	<b>Details</b>	Class A retail space in the heart of Riverview's retail development area
<b>Price</b>	\$14.00 psf Net	<b>Agent(s)</b>	Adam MaGee

# COMMERCIAL/RETAIL SPACE FOR LEASE

CLICK ON THE PHOTO TO OBTAIN MORE INFORMATION ONLINE



## 35 HIGHFIELD STREET, MONCTON

<b>Size</b>	+/- 7,257 sf	<b>Details</b>	Historic leasing opportunity in one of Moncton's most iconic properties
<b>Price</b>	\$11.00 psf Net	<b>Agent(s)</b>	Adam MaGee, Jamie Smith



## 1005-115 MAIN STREET, MONCTON

<b>Size</b>	150 sf & 1,216 sf	<b>Details</b>	Located in the storefront section of the Crowne Plaza complex
<b>Price</b>	\$22.00 psf Net	<b>Agent(s)</b>	Adam MaGee, Jamie Smith



## 16 CHURCH STREET, MONCTON

[TAKE VIRTUAL TOUR](#)

<b>Size</b>	+/- 3,600 sf	<b>Details</b>	Stylish open space with private offices, meeting rooms & large kitchen
<b>Price</b>	\$24.00/ sf semi-gross	<b>Agent(s)</b>	Donna Green



## 659 QUEEN STREET, FREDERICTON

<b>Size</b>	1,698 sf	<b>Details</b>	Open-concept space in Downtown Fredericton
<b>Price</b>	\$19.50 psf Net	<b>Agent(s)</b>	Adam MaGee, Jamie Smith



## 206 PINE GLEN ROAD, RIVERVIEW

<b>Size</b>	1,350 sf	<b>Details</b>	Prime ground floor commercial/flex space in high traffic area
<b>Price</b>	\$2,250/month	<b>Agent(s)</b>	Donna Green



# INDUSTRIAL SPACE FOR LEASE

CLICK ON THE PHOTO TO OBTAIN MORE INFORMATION ONLINE



## 653 BABIN STREET, DIEPPE

<b>Size</b>	TBC	<b>Details</b>	Well located industrial space with grade level loading
<b>Price</b>	\$10.50 psf Net	<b>Agent(s)</b>	Adam MaGee   Ian Franklin



## 725 CHAMPLAIN STREET, DIEPPE

<b>Size</b>	2,800 sf	<b>Details</b>	Highly visible industrial/retail space with dock level loading
<b>Price</b>	\$10.50 psf Net	<b>Agent(s)</b>	Adam MaGee

# FOR SALE

COMMERCIAL/OFFICE/RETAIL FOR SALE

---

INVESTMENT PROPERTIES FOR SALE

---

INDUSTRIAL PROPERTIES FOR SALE

---

LAND FOR SALE

---



# COMMERCIAL/RETAIL/OFFICE FOR SALE

CLICK ON THE PHOTO TO OBTAIN MORE INFORMATION ONLINE



## 214 CHURCH STREET, MONCTON

[TAKE VIRTUAL TOUR](#)

<b>Size</b>	13,500 sf	<b>Details</b>	Fully equipped restaurant and building, great turnkey opportunity
<b>Price</b>	\$2,600,000	<b>Agent(s)</b>	Adam Magee



## RETAIL BUSINESS & HOME, SOUTH EAST NEW BRUNSWICK

<b>Price</b>	Please Contact	<b>Details</b>	Established business w/ commercial & residential property
		<b>Agent(s)</b>	Adam Magee



## 113 WELDON STREET, MONCTON

[TAKE VIRTUAL TOUR](#)

<b>Size</b>	2,024 sf	<b>Details</b>	Stunning two-level commercial property in downtown Moncton
<b>Price</b>	\$475,000	<b>Agent(s)</b>	Donna Green



## 9514 RUE MAIN, RICHIBUCTO

<b>Size</b>	+/- 9,004 sf	<b>Details</b>	Mixed-use commercial building ideal for many uses
<b>Price</b>	\$299,000	<b>Agent(s)</b>	Adam MaGee

# COMMERCIAL/RETAIL/OFFICE FOR SALE

CLICK ON THE PHOTO TO OBTAIN MORE INFORMATION ONLINE



191 DOAK ROAD, FREDERICTON			
<b>Size</b>	+/- 9,828 sf	<b>Details</b>	Office building sits on 5.56 acres with ample parking
<b>Price</b>	\$1,795,000	<b>Agent(s)</b>	Adam MaGee



# INVESTMENT/INDUSTRIAL PROPERTIES FOR SALE

CLICK ON THE PHOTO TO OBTAIN MORE INFORMATION ONLINE



## 178 HALIFAX STREET, MONCTON

<b>Size</b>	+/- 7,840 sf	<b>Details</b>	Great commercial building with long term tenant; investment opportunity
<b>Price</b>	\$650,000	<b>Agent(s)</b>	Donna Green



## THE JUNCTION URBAN VILLAGE, MONCTON

<b>Size</b>	+/- 3.2 acres	<b>Details</b>	Prime opportunity in downtown Moncton's new Entertainment District
<b>Price</b>	Please Contact	<b>Agent(s)</b>	Ian Franklin

# LAND FOR SALE

CLICK ON THE PHOTO TO OBTAIN MORE INFORMATION ONLINE



## PRINCIPALE-EST AVENUE, DIEPPE

<b>Size</b>	4.47 acres	<b>Details</b>	Prime development land within Dieppe
<b>Price</b>	\$1,900,000	<b>Agent(s)</b>	Adam MaGee   Jamie Smith



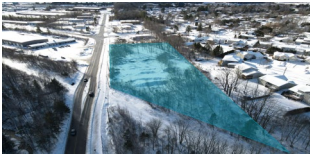
## 133-161 PARK STREET, SUSSEX

<b>Size</b>	3.48 acres	<b>Details</b>	Former CN Site with 3.48 acres of development land
<b>Price</b>	\$159,000	<b>Agent(s)</b>	Adam MaGee   Ian Franklin



## 707 RIVERSIDE DRIVE, BATHURST

<b>Size</b>	24,186 sf	<b>Details</b>	Prime corner development lot in Bathurst
<b>Price</b>	\$7,500	<b>Agent(s)</b>	Adam MaGee



## 241 WILSEY ROAD, FREDERICTON

<b>Size</b>	2.25 Acres	<b>Details</b>	Prime commercial land within the Fredericton Industrial Park
<b>Price</b>	\$299,000	<b>Agent(s)</b>	Adam MaGee



## 382 ACADIE AVENUE, DIEPPE

<b>Size</b>	11,195 sf	<b>Details</b>	Corner lot development land situated within Dieppe
<b>Price</b>	\$250,000	<b>Agent(s)</b>	Adam MaGee



## 317 NOTRE DAME STREET, ALTHOVILLE

<b>Size</b>	18,470 sf	<b>Details</b>	Commercial land ready for development in the community of Althoville
<b>Price</b>	\$75,000	<b>Agent(s)</b>	Adam MaGee

# LAND FOR SALE

CLICK ON THE PHOTO TO OBTAIN MORE INFORMATION ONLINE



## 2337 HIGHWAY 15, IRISHTOWN

<b>Size</b>	56,101 sf	<b>Details</b>	Agricultural/Commercial land located in Irishtown
<b>Price</b>	\$99,000	<b>Agent(s)</b>	Adam MaGee



## 2410 MIRAMICHI AVENUE, BATHURST

[AUCTION SITE](#)

<b>Size</b>	1.7 Acres	<b>Details</b>	Seconds from both Route 8 & 11 highways
<b>Price</b>	\$15,000	<b>Agent(s)</b>	Adam MaGee



## 9501 RUE MAIN, RICHIBUCTO

<b>Size</b>	1.8 Acres	<b>Details</b>	Centrally-located in town on high-traffic corner
<b>Price</b>	\$189,500	<b>Agent(s)</b>	Donna Green



## HIGHWAY 2 & QUEENSWAY DRIVE, MONCTON

<b>Size</b>	6.95 Acres	<b>Details</b>	Prime piece of development land with highway visibility
<b>Price</b>	\$1,530,000	<b>Agent(s)</b>	Adam MaGee



## 270 KILLAM DRIVE, MONCTON

<b>Size</b>	2.47 Acres	<b>Details</b>	Rare piece of development land in high traffic area
<b>Price</b>	\$565,000	<b>Agent(s)</b>	Adam MaGee

# LAND FOR SALE

CLICK ON THE PHOTO TO OBTAIN MORE INFORMATION ONLINE



## IVAN RAND DRIVE, MONCTON

<b>Size</b>	+/- 17 acres	<b>Details</b>	Prime development site near Downtown Event Centre. Zoned SC
<b>Price</b>	\$2,400,000	<b>Agent(s)</b>	Ian Franklin



# SOLD AND LEASED PROPERTIES



## 206 PINE GLEN ROAD, RIVERVIEW

<b>Size</b>	Private Office	<b>Details</b>	Private office available within this Prime Commercial/Flex property
		<b>Agent(s)</b>	Donna Green



## 540 PINWOOD ROAD, RIVERVIEW

<b>Size</b>	+/- 1,636 – 3,505 sf	<b>Details</b>	Class A retail space in the heart of Riverview's retail development area
		<b>Agent(s)</b>	Adam MaGee



## 988 CHAMPLAIN STREET, DIEPPE

<b>Size</b>	800 sf	<b>Agent(s)</b>	Donna Green
-------------	--------	-----------------	-------------



## 400 CHAMPLAIN STREET, DIEPPE

<b>Size</b>	1,200 sf	<b>Agent(s)</b>	Donna Green
-------------	----------	-----------------	-------------



## 185 ACADIE AVENUE, DIEPPE

<b>Size</b>	1,385 sf	<b>Details</b>	Prime ground floor office space within downtown Dieppe
		<b>Agent(s)</b>	Donna Green



**Donna Green**  
Vice President  
506 387 6930 Direct  
506 866 1319 Mobile  
[dgreen@cwatlantic.com](mailto:dgreen@cwatlantic.com)



**Adam MaGee**  
Associate Vice President  
506 387 6928 Direct  
506 872 2507 Mobile  
[amagee@cwatlantic.com](mailto:amagee@cwatlantic.com)



**Jamie Smith**  
Commercial Real Estate Advisor  
506 387 4169 Mobile  
[jsmith@cwatlantic.com](mailto:jsmith@cwatlantic.com)



**Mike Watkins**  
Senior Associate  
506 639 0281 Mobile  
506 652 5707 Fax  
[mwatkins@cwatlantic.com](mailto:mwatkins@cwatlantic.com)



**Ian Franklin, CCIM**  
Vice President Emeritus  
506 863 7199 Mobile  
[ifranklin@cwatlantic.com](mailto:ifranklin@cwatlantic.com)



**Bill MacAvoy**  
Managing Director  
902 425 1872 Direct  
902 880 0445 Mobile  
[bmacavoy@cwatlantic.com](mailto:bmacavoy@cwatlantic.com)



**Marc Gosselin**  
Commercial Real Estate  
Advisor  
506 636 1739 Mobile  
[mgosselin@cwatlantic.com](mailto:mgosselin@cwatlantic.com)

[cwatlantic.com](http://cwatlantic.com)