

MONTHLY LISTINGS REPORT

New Brunswick | August 2023

FOR LEASE

OFFICE SPACE FOR LEASE

INDUSTRIAL SPACE FOR LEASE

COMMERCIAL/RETAIL SPACE FOR LEASE



OFFICE SPACE FOR LEASE

CLICK ON THE PHOTO TO OBTAIN MORE INFORMATION ONLINE



113 WELDON STREET, MONCTON

[TAKE VIRTUAL TOUR](#)

Size	+/- 2,024 sf	Details	Stunning two-level commercial property in downtown Moncton
Price	\$18.00 psf Net	Agent(s)	Donna Green



767 COVERDALE ROAD, RIVERVIEW

[TAKE VIRTUAL TOUR](#)

Size	1,080 sf	Details	Professional commercial space located in Riverview, NB
Price	\$1,950/Monthly Net	Agent(s)	Donna Green



1000 ST. GEORGE BOULEVARD, MONCTON

[TAKE VIRTUAL TOUR](#)

Size	6,534 sf	Details	Modern turnkey office space available within Moncton, NB
Price	\$23.00 psf Gross	Agent(s)	Adam MaGee



281 ST. GEORGE STREET, MONCTON

[TAKE VIRTUAL TOUR](#)

Size	1,600 sf	Details	Ground floor, office or versatile flex space in high traffic location
Price	\$11.00 psf Net	Agent(s)	Donna Green



245-255 COLLISHAW STREET, MONCTON

[TAKE VIRTUAL TOUR](#)

Size	2,971 – 4,919 sf	Details	Prime ground and 2 nd floor commercial spaces in a prime location
Price	\$10.00 - \$14.00 psf Net	Agent(s)	Donna Green



860 MAIN STREET, MONCTON

[TAKE VIRTUAL TOUR](#)

Size	+/- 949 to 8,020 sf	Details	Downtown office space with great views and ample natural light
Price	\$13.00 psf Net	Agent(s)	Donna Green

OFFICE SPACE FOR LEASE

CLICK ON THE PHOTO TO OBTAIN MORE INFORMATION ONLINE



232-236 ST. GEORGE STREET, MONCTON

[TAKE VIRTUAL TOUR](#)

Size	+/- 257 to 10,183 sf	Details	Various suites, 5-storey multi-tenant office building close to downtown
Price	\$18 psf Gross	Agent(s)	Donna Green



50 DRISCOLL CRESCENT, MONCTON

Size	+/- 593 sf	Details	Professional office space available on second floor
Price	Please Contact	Agent(s)	Donna Green



16 CHURCH STREET, MONCTON

[TAKE VIRTUAL TOUR](#)

Size	+/- 3,600 sf	Details	Stylish open space with private offices, meeting rooms & large kitchen
Price	\$24.00/ sf semi-gross	Agent(s)	Donna Green



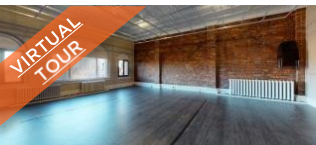
196 ROBINSON COURT, MONCTON

Size	+/- 1,000 and 2,000 sf	Details	Completely renovated office space(s) in the heart of Downtown Moncton
Price	\$18.00 psf Gross	Agent(s)	Donna Green



123 HALIFAX STREET, MONCTON

Size	Up to 63,230 sf	Details	Moncton's newly remodeled, stylish office complex in the West End.
Price	\$18.00 psf Gross	Agent(s)	Donna Green, Ian Franklin



698 MAIN STREET, MONCTON

[TAKE VIRTUAL TOUR](#)

Size	+/- 2,000 sf	Details	Versatile downtown studio space with unique architectural elements
Price	\$4,000/month Gross	Agent(s)	Donna Green

OFFICE SPACE FOR LEASE

CLICK ON THE PHOTO TO OBTAIN MORE INFORMATION ONLINE



679-695 MAIN STREET, MONCTON

[TAKE VIRTUAL TOUR](#)

Size	1,246 – 5,816 sf	Details	3-storey Italianate sandstone building located in Downtown Moncton.
Price	\$17.00 psf Net	Agent(s)	Adam MaGee, Jamie Smith



599 MAIN STREET, MONCTON

Size	812 – 1,350 sf	Details	Appealing 2 nd floor office spaces in downtown Moncton
Price	\$1,500- \$2,025/month Gross	Agent(s)	Donna Green



880 MAIN STREET, MONCTON

Size	+/- 2,000 sf	Details	Located on one of Downtown Moncton's most high-traffic corners
Price	\$24.00 psf Semi-Gross	Agent(s)	Donna Green

COMMERCIAL/RETAIL SPACE FOR LEASE

CLICK ON THE PHOTO TO OBTAIN MORE INFORMATION ONLINE



113 WELDON STREET, MONCTON

[TAKE VIRTUAL TOUR](#)

Size	+/- 2,024 sf	Details	Stunning two-level commercial property in downtown Moncton
Price	\$18.00 psf Net	Agent(s)	Donna Green



767 COVERDALE ROAD, RIVERVIEW

[TAKE VIRTUAL TOUR](#)

Size	1,080 sf	Details	Professional commercial space located in Riverview, NB
Price	\$1,950/Monthly Net	Agent(s)	Donna Green



245-255 COLLISHAW STREET, MONCTON

[TAKE VIRTUAL TOUR](#)

Size	2,971 – 4,919 sf	Details	Prime ground and 2 nd floor commercial spaces in a prime location
Price	\$10.00 - \$14.00 psf Net	Agent(s)	Donna Green



210 MILLENNIUM BOULEVARD, MONCTON

Size	7,560 sf	Details	Single tenant service commercial property situated on a high traffic road.
Price	\$10.95 psf Net	Agent(s)	Adam MaGee Ian Franklin



1405 MOUNTAIN ROAD, MONCTON

Size	1,800 sf	Details	Ground level commercial space with excellent exposure.
Price	\$17.75 psf	Agent(s)	Adam MaGee

COMMERCIAL/RETAIL SPACE FOR LEASE

CLICK ON THE PHOTO TO OBTAIN MORE INFORMATION ONLINE



698 MAIN STREET, MONCTON		TAKE VIRTUAL TOUR	
Size	+/- 3,000 sf	Details	Versatile downtown studio space with unique architectural elements
Price	\$2,000 -\$4,000/month Gross	Agent(s)	Donna Green



49 FOUNDRY STREET, MONCTON			
Size	+/- 1,352 - 12,582 sf	Details	3 ground floor commercial units available in Downtown Moncton
Price	\$14.00 psf Net	Agent(s)	Adam MaGee, Jamie Smith



THE JUNCTION URBAN VILLAGE, MONCTON			
Size	+/- 3.2 acres	Details	Prime opportunity in downtown Moncton's new Entertainment District
Price	Please Contact	Agent(s)	Ian Franklin



540 PINEWOOD ROAD, RIVERVIEW			
Size	+/- 1,636 – 3,505 sf	Details	Class A retail space in the heart of Riverview's retail development area
Price	\$14.00 psf Net	Agent(s)	Adam MaGee

COMMERCIAL/RETAIL SPACE FOR LEASE

CLICK ON THE PHOTO TO OBTAIN MORE INFORMATION ONLINE



35 HIGHFIELD STREET, MONCTON

Size	+/- 7,257 sf	Details	Historic leasing opportunity in one of Moncton's most iconic properties
Price	\$11.00 psf Net	Agent(s)	Adam MaGee, Jamie Smith



1005-115 MAIN STREET, MONCTON

Size	150 sf & 1,216 sf	Details	Located in the storefront section of the Crowne Plaza complex
Price	\$22.00 psf Net	Agent(s)	Adam MaGee, Jamie Smith



16 CHURCH STREET, MONCTON

[TAKE VIRTUAL TOUR](#)

Size	+/- 3,600 sf	Details	Stylish open space with private offices, meeting rooms & large kitchen
Price	\$24.00/ sf semi-gross	Agent(s)	Donna Green



488 MAIN STREET, SHEDIAC

[TAKE VIRTUAL TOUR](#)

Size	Up to 1,482 sf	Details	Brand new retail space currently in development
Price	\$22.00 psf Net	Agent(s)	Adam MaGee, Jamie Smith



281 ST. GEORGE STREET, MONCTON

[TAKE VIRTUAL TOUR](#)

Size	1,600 sf	Details	Ground floor, office or versatile flex space in high traffic location
Price	\$11.00 psf Net	Agent(s)	Donna Green

COMMERCIAL/RETAIL SPACE FOR LEASE

CLICK ON THE PHOTO TO OBTAIN MORE INFORMATION ONLINE



221 HAMPTON ROAD, QUISPAMISIS, SAINT JOHN

Size	+/- 14,250 sf	Details	Multi-tenant commercial property offering great frontage
Price	Please Contact	Agent(s)	Marc Gosselin



304 CHAMPLAIN STREET, DIEPPE

Size	+/- 660 sf	Details	Open concept commercial space within a newly constructed property.
Price	\$18.50 Net	Agent(s)	Adam MaGee



659 QUEEN STREET, FREDERICTON

Size	1,698 sf	Details	Open-concept space in Downtown Fredericton
Price	\$19.50 psf Net	Agent(s)	Adam MaGee, Jamie Smith



880 MAIN STREET, MONCTON

Size	+/- 2,000 sf	Details	Located on one of Downtown Moncton's most high-traffic corners
Price	\$24.00 psf Semi-Gross	Agent(s)	Donna Green

INDUSTRIAL SPACE FOR LEASE

CLICK ON THE PHOTO TO OBTAIN MORE INFORMATION ONLINE



725 CHAMPLAIN STREET, DIEPPE			
Size	2,800 sf	Details	Highly visible industrial/retail space with dock level loading
Price	\$10.50 psf Net	Agent(s)	Adam MaGee

FOR SALE

COMMERCIAL/OFFICE/RETAIL FOR SALE

INVESTMENT PROPERTIES FOR SALE

INDUSTRIAL PROPERTIES FOR SALE

LAND FOR SALE



COMMERCIAL/RETAIL/OFFICE FOR SALE

CLICK ON THE PHOTO TO OBTAIN MORE INFORMATION ONLINE



438 KING GEORGE HIGHWAY, MIRIMACHI

[TAKE VIRTUAL TOUR](#)

Size	+/- 1,040 sf	Details	Well-maintained commercial/office building in the heart of Mirimachi
Price	\$199,900	Agent(s)	Adam MaGee



210 MILLENNIUM BOULEVARD, MONCTON

Size	7,560 sf	Details	Single tenant service commercial property situated on a high traffic road.
Price	\$1,250,000	Agent(s)	Adam MaGee Ian Franklin



281 ST. GEORGE STREET, MONCTON

[TAKE VIRTUAL TOUR](#)

Size	4,560 sf	Details	Two-tenant income-producing property situated in a desirable location
Price	\$1,075,000	Agent(s)	Donna Green



214 CHURCH STREET, MONCTON

[TAKE VIRTUAL TOUR](#)

Size	13,500 sf	Details	Fully equipped restaurant and building, great turnkey opportunity
Price	\$2,600,000	Agent(s)	Adam Magee



113 WELDON STREET, MONCTON

[TAKE VIRTUAL TOUR](#)

Size	2,024 sf	Details	Stunning two-level commercial property in downtown Moncton
Price	\$459,900	Agent(s)	Donna Green

COMMERCIAL/RETAIL/OFFICE FOR SALE

CLICK ON THE PHOTO TO OBTAIN MORE INFORMATION ONLINE



191 DOAK ROAD, FREDERICTON

Size	+/- 9,828 sf	Details	Office building sits on 5.56 acres with ample parking
Price	\$1,795,000	Agent(s)	Adam MaGee



9514 RUE MAIN, RICHIBUCTO

Size	+/- 9,004 sf	Details	Mixed-use commercial building ideal for many uses
Price	\$299,000	Agent(s)	Adam MaGee

INVESTMENT/INDUSTRIAL PROPERTIES FOR SALE

CLICK ON THE PHOTO TO OBTAIN MORE INFORMATION ONLINE



178 HALIFAX STREET, MONCTON

Size	+/- 7,840 sf	Details	Great commercial building with long term tenant; investment opportunity
Price	\$650,000	Agent(s)	Donna Green



THE JUNCTION URBAN VILLAGE, MONCTON

Size	+/- 3.2 acres	Details	Prime opportunity in downtown Moncton's new Entertainment District
Price	Please Contact	Agent(s)	Ian Franklin



900 CREEK ROAD, SHEPODY

Size	+/- 40 acres	Details	40 acres of wilderness land with significant untapped potential
Price	Please Contact	Agent(s)	Marc Gosselin

LAND FOR SALE

CLICK ON THE PHOTO TO OBTAIN MORE INFORMATION ONLINE



CAMBRIDGE ESTATES DEVELOPMENT, MILLIDGEVILLE			
Size	68.44 acres	Details	Significant residential development land within the affluent community of Millidgeville, NB
Price	Please Contact	Agent(s)	Bill MacAvoy



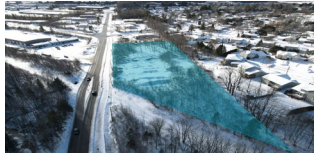
PRINCIPALE-EST AVENUE, DIEPPE			
Size	4.47 acres	Details	Prime development land within Dieppe
Price	\$1,900,000	Agent(s)	Adam MaGee Jamie Smith



133-161 PARK STREET, SUSSEX			
Size	3.48 acres	Details	Former CN Site with 3.48 acres of development land
Price	\$159,000	Agent(s)	Adam MaGee Ian Franklin



707 RIVERSIDE DRIVE, BATHURST			
Size	24,186 sf	Details	Prime corner development lot in Bathurst
Price	\$7,500	Agent(s)	Adam MaGee



241 WILSEY ROAD, FREDERICTON			
Size	2.25 Acres	Details	Prime commercial land within the Fredericton Industrial Park
Price	\$299,000	Agent(s)	Adam MaGee



382 ACADIE AVENUE, DIEPPE			
Size	11,195 sf	Details	Corner lot development land situated within Dieppe
Price	\$250,000	Agent(s)	Adam MaGee

LAND FOR SALE

CLICK ON THE PHOTO TO OBTAIN MORE INFORMATION ONLINE



2337 HIGHWAY 15, IRISHTOWN

Size	56,101 sf	Details	Agricultural/Commercial land located in Irishtown
Price	\$99,000	Agent(s)	Adam MaGee



2410 MIRAMICHI AVENUE, BATHURST

[AUCTION SITE](#)

Size	1.7 Acres	Details	Seconds from both Route 8 & 11 highways
Price	\$15,000	Agent(s)	Adam MaGee



9501 RUE MAIN, RICHIBUCTO

Size	1.8 Acres	Details	Centrally-located in town on high-traffic corner
Price	\$99,900	Agent(s)	Donna Green



HIGHWAY 2 & QUEENSWAY DRIVE, MONCTON

Size	3.88 Acres	Details	Prime piece of development land with highway visibility
Price	\$1,300,000	Agent(s)	Jamie Smith



317 NOTRE DAME STREET, ALTHOVILLE

Size	18,470 sf	Details	Commercial land ready for development in the community of Althoville
Price	\$75,000	Agent(s)	Adam MaGee



IVAN RAND DRIVE, MONCTON

Size	+/- 17 acres	Details	Prime development site near Downtown Event Centre. Zoned SC
Price	\$2,400,000	Agent(s)	Ian Franklin

SOLD & LEASED

A LIST OF PROPERTIES SOLD AND
LEASED BY OUR BROKERAGE TEAM IN
THE LAST 30 DAYS.



SOLD AND LEASED PROPERTIES



270 KILLAM DRIVE, MONCTON

Size	2.47 Acres	Details	Rare piece of development land in high traffic area
Price	\$565,000	Agent(s)	Adam MaGee



725 CHAMPLAIN STREET, DIEPPE

Size	2,800 sf	Details	Highly visible industrial/retail space with dock level loading
Price	\$10.50 psf Net	Agent(s)	Adam MaGee



961 MAIN STREET, MONCTON

Size	Up to +/- 6,500 sf	Details	Prime Main Street location near Avenir Centre
Price	\$19.00 sf Net	Agent(s)	Adam MaGee, Jamie Smith



Donna Green
 Vice President
 506 387 6930 Direct
 506 866 1319 Mobile
dgreen@cwatlantic.com



Adam MaGee
 Associate Vice President
 506 387 6928 Direct
 506 872 2507 Mobile
amagee@cwatlantic.com



Jamie Smith
 Commercial Real Estate Advisor
 506 387 4169 Mobile
jsmith@cwatlantic.com



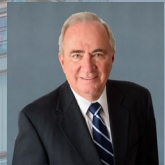
Mike Watkins
 Senior Associate
 506 639 0281 Mobile
 506 652 5707 Fax
mwatkins@cwatlantic.com



Ian Franklin, CCIM
 Vice President Emeritus
 506 863 7199 Mobile
ifranklin@cwatlantic.com



Bill MacAvoy
 Managing Director
 902 425 1872 Direct
 902 880 0445 Mobile
bmacavoy@cwatlantic.com



Marc Gosselin
 Commercial Real Estate
 Advisor
 506 636 1739 Mobile
mgosselin@cwatlantic.com

cwatlantic.com