



FOR LEASE



100 WINNONISH DRIVE

Bay Bulls, NL

30,000 SF

\$17.50 PSF (NET)

PROPERTY HIGHLIGHTS

54' clear span (63' eave) industrial property
situated 20 minutes outside of St. John's

Property is fitted with two 25 Metric Tonne
(MT) cranes providing a 50MT capacity with
45' hook height.

Two 24' overhead doors at front, and Four
10' overhead doors.

Located within Bay Bulls, 2.7km from the
Pennecon Offshore Marine Base.

JOANNE EARLE

Senior Associate

+1 709 699 6832

jearle@cwatlantic.com

100 WINNONISH DRIVE

Bay Bulls, Newfoundland and Labrador

30,000 SF



For details, please refer map

FOR LEASE



Property Features

Address	100 Winnonish Drive, Bay Bulls, Newfoundland and Labrador A0A 1C0	Drive-ins	6
Year Built	2014	Zoning	Industrial General
Total Bldg. SF	30,000 sf	Floor	Concrete
Available SF	30,000 sf	Lighting	LED
Construction	Steel	HVAC	None
Land Area	±TBC	Utilities	Electricity Water Sewer
Office Area	N/A		
Clear Height	54' (63' Eave)		
Col. Spacing	Clear Span		
Fire Protection	None		
Electrical	120V & 600V		

JOANNE EARLE

Senior Associate
+1 709 699 6832
jearle@cwatlantic.com

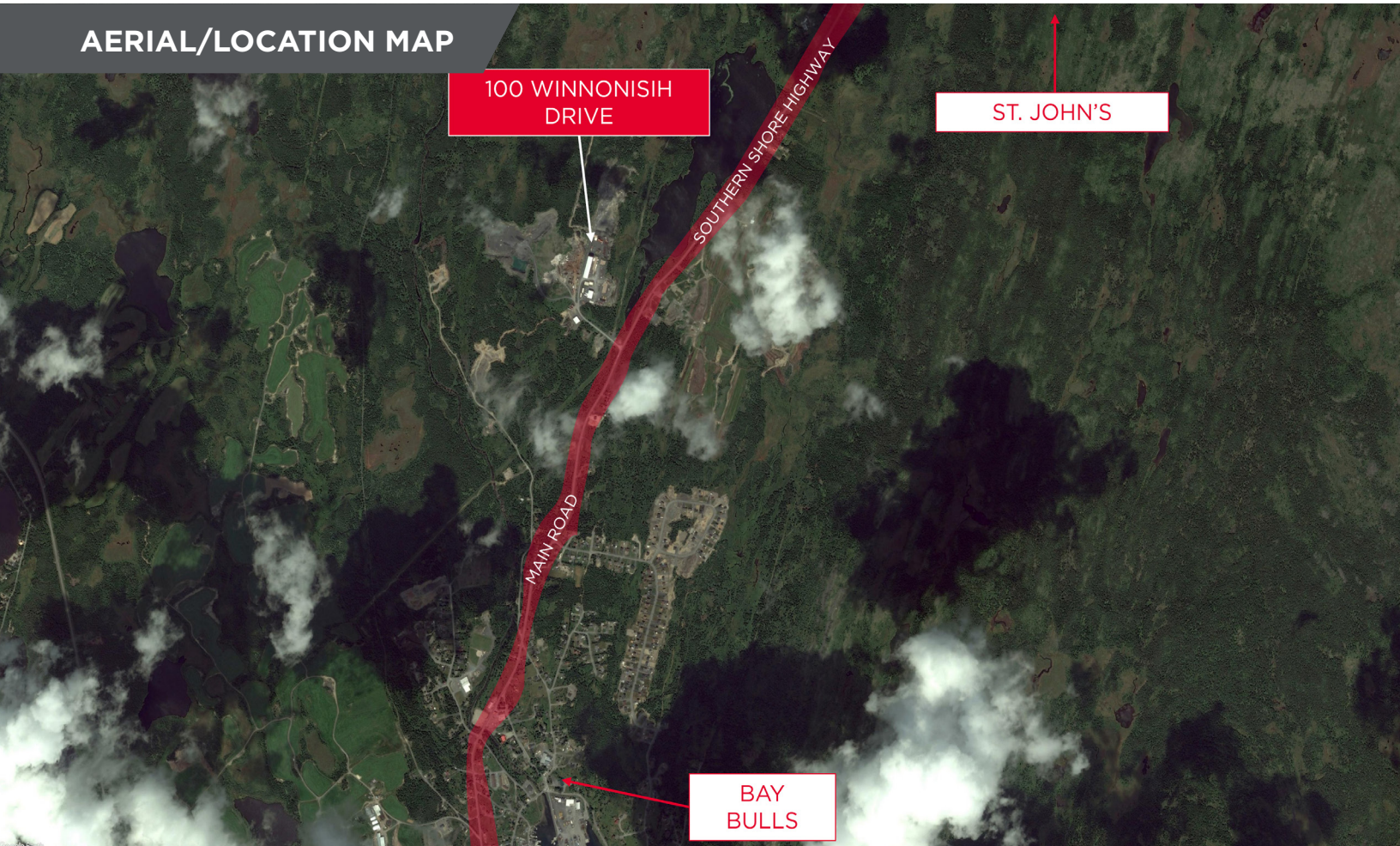
100 WINNONISH DRIVE

Bay Bulls, Newfoundland and Labrador

30,000 SF



AERIAL/LOCATION MAP



Location Information

Located within the newer industrial area of Bay Bulls, just 20 minutes South of St. John's. Strategically situated just 2.7km from the Pennecon Offshore Marine Base, and is located directly off of the Southern Shore Highway, a main thoroughfare that provides quick and easy access to St. John's, and many other communities and towns along the Southeastern shore of Newfoundland and Labrador.

JOANNE EARLE

Senior Associate

+1 709 699 6832

jearle@cwatlantic.com

100 WINNONISH DRIVE

Bay Bulls, Newfoundland and Labrador

30,000 SF



PROPERTY PHOTOS



JOANNE EARLE

Senior Associate

+1 709 699 6832

jearle@cwatlantic.com

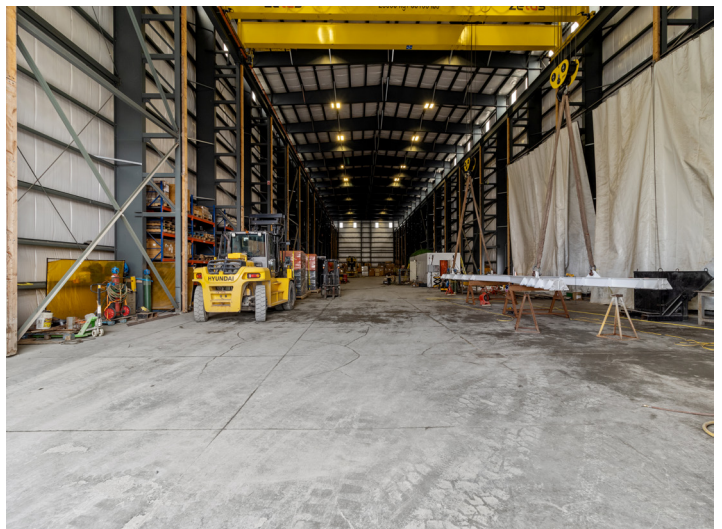
100 WINNONISH DRIVE

Bay Bulls, Newfoundland and Labrador

30,000 SF



PROPERTY PHOTOS



JOANNE EARLE

Senior Associate

+1 709 699 6832

jearle@cwatlantic.com