

FOR LEASE
194 Killam Drive
Moncton, New Brunswick



[View Virtual Tour](#)

+/- 4,640 SF Lease Rate: \$8.75 psf Net

Property Highlights

Centrally located commercial space in a busy multi-tenant retail building

- +/- 4,640 sf of commercial flex space with multiple open concept rooms, private offices, staff room, and more
- High ceilings
- 1 Dock-level loading door
- Versatile layout suited for many uses



Ample onsite parking



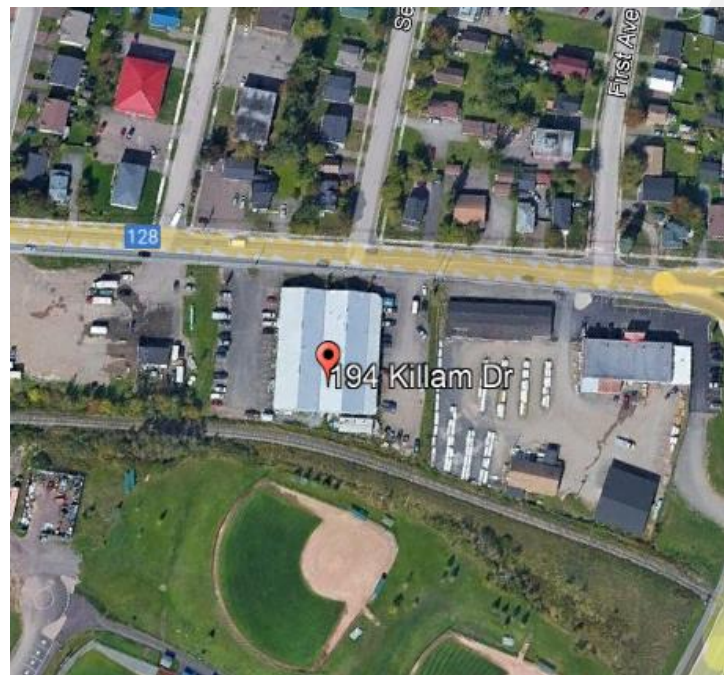
Available June 1, 2022



Zoning: IP – Industrial Park

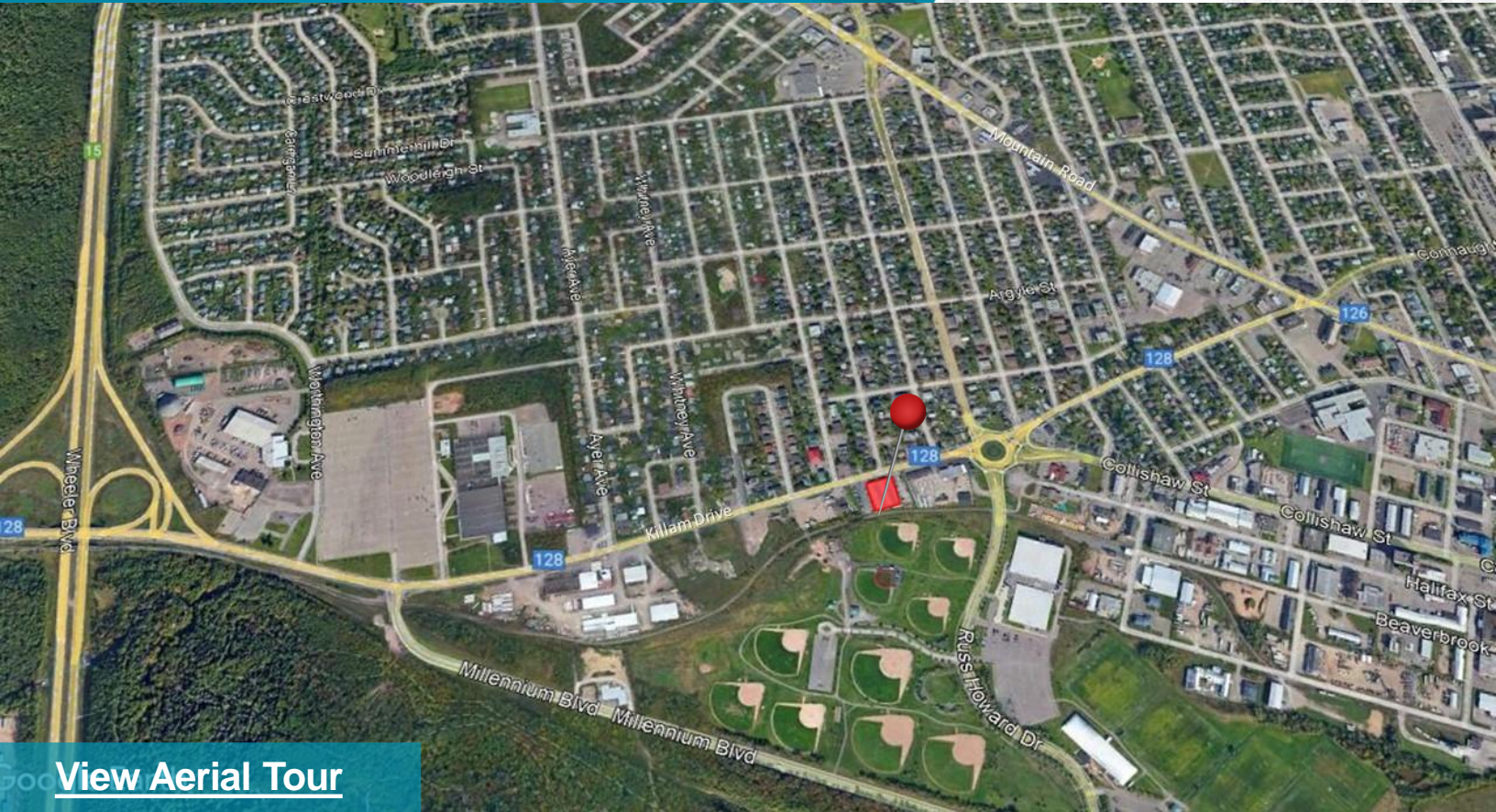


Operating Costs: \$6.08 psf + heat and lights



Contact

ADAM MAGEE
Senior Associate
+1 506 387 6928
amagee@cwatlantic.com



[View Aerial Tour](#)

Location Information



High traffic location



5 minutes to the Moncton Industrial Park



Easy access to Wheeler Blvd and the Trans Canada Highway



Minutes from retail and the Moncton Coliseum



On city transit route



Walking distance to Superior Propane Centre and Centennial Park



Nearby fast food: Greco Pizza, McDonald's, Burger King, Deluxe, Pizza Hut and KFC



5 minutes to Downtown Moncton

Contact

ADAM MAGEE
Senior Associate
+1 506 387 6928
amagee@cwatlantic.com



Contact

ADAM MAGEE
Senior Associate
+1 506 387 6928
amagee@cwatlantic.com



Contact

ADAM MAGEE
Senior Associate
+1 506 387 6928
amagee@cwatlantic.com