

MONTHLY LISTINGS REPORT

Greater Moncton & Surrounding Areas
New Brunswick | May 2021

FOR LEASE

OFFICE SPACE FOR LEASE

INDUSTRIAL SPACE FOR LEASE

COMMERCIAL/RETAIL SPACE FOR LEASE



OFFICE SPACE FOR LEASE

CLICK ON THE PHOTO TO OBTAIN MORE INFORMATION ONLINE



22 CHURCH STREET, MONCTON

[TAKE VIRTUAL TOUR](#)

Size	+/- Up to 14,765 sf	Details	Multi-tenant office building in the heart of downtown Moncton
Price	\$11.00 psf Net	Agent(s)	Donna Green



50 DRISCOLL CRESCENT (2nd FLOOR SUITES), MONCTON

Size	+/- 312 and 891 sf	Details	Two professional office suites (can be combined) with natural light
Price	Please Contact	Agent(s)	Donna Green



607 ST. GEORGE BOULEVARD, MONCTON

Size	+/- 2,532 sf	Details	Centrally located professional office space with great visibility
Price	\$16.00 psf Gross	Agent(s)	Donna Green



698 MAIN STREET, MONCTON

[TAKE VIRTUAL TOUR](#)

Size	+/- 2,000 sf	Details	Versatile downtown studio space with unique architectural elements
Price	\$4,000/month Gross	Agent(s)	Donna Green



120 HALIFAX STREET, MONCTON

Size	+/- 1,262 and 2,500 sf	Details	Office and warehouse space located in the Victory Industrial Park
Price	\$6.50 psf Net	Agent(s)	Ian Franklin Adam MaGee

OFFICE SPACE FOR LEASE

CLICK ON THE PHOTO TO OBTAIN MORE INFORMATION ONLINE



77 ROONEY CRESCENT, MONCTON

[TAKE VIRTUAL TOUR](#)

Size	+/- 7,122 sf	Details	Well-maintained modern office space in the Moncton Industrial Park
Price	\$10.00 psf Net	Agent(s)	Adam MaGee



233-235 ST. GEORGE STREET, MONCTON

Size	+/- 1,300 to 3,000 sf	Details	2 storey building with rear parking and separate entrance for each floor
Price	\$8.00-11.00 psf Net	Agent(s)	Donna Green



1644 MOUNTAIN ROAD, MONCTON

Size	+/- 1,600 sf	Details	High profile professional office, mixed use space, with high visibility
Price	\$14.00 psf Semi-Gross	Agent(s)	Donna Green



50 DRISCOLL CRESCENT, MONCTON (GROUND FLOOR)

Size	+/- 912 sf	Details	Upgraded professional office space with storage space and natural light
Price	\$1,200/month Gross	Agent(s)	Donna Green



23 BIGGS DRIVE, RIVERVIEW

Size	+/- 2,000 sf	Details	Office and warehouse space on a busy street, ideal for skilled trades
Price	\$2,000/month + utilities	Agent(s)	Donna Green

OFFICE SPACE FOR LEASE

CLICK ON THE PHOTO TO OBTAIN MORE INFORMATION ONLINE



196 ROBINSON COURT, MONCTON

Size	+/- 1,000 and 2,000 sf	Details	Completely renovated office space(s) in the heart of Downtown Moncton
Price	\$18.00 psf Gross	Agent(s)	Donna Green



844 MAIN STREET, MONCTON

[TAKE VIRTUAL TOUR](#)

Size	Up to 2,920 sf	Details	Modern, downtown ground floor space with exposed brick and natural light
Price	\$23.00 psf Gross	Agent(s)	Donna Green



413 MAIN STREET, MONCTON

Size	Up to 6,000 sf	Details	3-storey mixed-use office/commercial space with stunning upgrades
Price	\$18-28 psf Semi-Gross	Agent(s)	Donna Green



860 MAIN STREET, MONCTON

[TAKE VIRTUAL TOUR](#)

Size	+/- 949 to 1,627 sf	Details	Downtown office space with great views and ample natural light
Price	\$13.00 psf Net	Agent(s)	Donna Green



720 MAIN STREET, MONCTON

Size	Up to 4,500 sf	Details	2 nd floor office space with various suites and sizes available
Price	\$17.00 psf Gross	Agent(s)	Donna Green

OFFICE SPACE FOR LEASE

CLICK ON THE PHOTO TO OBTAIN MORE INFORMATION ONLINE



343 ST. GEORGE STREET, MONCTON

Size	+/- 1,400 and 3,500 sf	Details	2 nd storey office units available. Open concept, industrial style office space
Price	\$13-17 Semi-Gross	Agent(s)	Donna Green Adam MaGee



232-236 ST. GEORGE STREET, MONCTON

Size	+/- 278 to 6,551 sf	Details	Various suites, 5-storey multi-tenant office building close to downtown
Price	\$18-20 psf Gross	Agent(s)	Donna Green



599 MAIN STREET, MONCTON

Size	+/- 812 and 1350 sf	Details	Appealing 2 nd floor office spaces in downtown Moncton
Price	\$1,500-1,750/month Gross	Agent(s)	Donna Green

INDUSTRIAL SPACE FOR LEASE

CLICK ON THE PHOTO TO OBTAIN MORE INFORMATION ONLINE



55 HENRI DUNANT STREET, MONCTON

[TAKE VIRTUAL TOUR](#)

Size	+/- 13,123 sf	Details	First class, freestanding building with office and industrial space
Price	\$8.50 psf triple net	Agent(s)	Donna Green



1070 ST. GEORGE BOULEVARD, MONCTON

Size	+/- 22,355 sf	Details	Open industrial space with existing offices in a highly visible building
Price	\$6.75 psf Net	Agent(s)	Donna Green Adam MaGee



80 DRISCOLL CRESCENT, MONCTON

Size	+/- 12,009 sf	Details	High quality warehouse space with +/- 1,500 of office space
Price	\$10.00 psf Gross	Agent(s)	Ian Franklin Adam MaGee



653 BABIN STREET, DIEPPE

Size	+/- 890 sf	Details	Open warehouse space with grade loading in Dieppe Industrial Park
Price	\$8.50 psf Net	Agent(s)	Adam MaGee

INDUSTRIAL SPACE FOR LEASE

CLICK ON THE PHOTO TO OBTAIN MORE INFORMATION ONLINE



23 BIGGS DRIVE, RIVERVIEW

Size	+/- 2,000 sf	Details	Office and warehouse space on a busy street, ideal for skilled trades
Price	\$2,000/month + utilities	Agent(s)	Donna Green



178 HALIFAX STREET, MONCTON

Size	+/- 2,600 sf	Details	Warehouse space ideal for service commercial, industrial use or storage
Price	\$1,500/month Semi-Gross	Agent(s)	Donna Green



227 HENRI DUNANT STREET, MONCTON

[TAKE VIRTUAL TOUR](#)

Size	+/- 6,000 sf	Details	Prime industrial space with +/- 26' ceilings and office space
Price	\$6.75 psf Net	Agent(s)	Adam MaGee

COMMERCIAL/RETAIL SPACE FOR LEASE

CLICK ON THE PHOTO TO OBTAIN MORE INFORMATION ONLINE



500 HILLSBOROUGH ROAD, RIVERVIEW

Size	+/- 13,000 sf	Details	Multi-tenant building on a 3.2 acre paved lot in a high traffic area
Price	\$10.00 psf Net	Agent(s)	Ian Franklin Adam MaGee



232-236 ST. GEORGE STREET (UNIT #01), MONCTON

Size	+/- 2,710 sf	Details	Corner ground floor commercial space in high-profile downtown building
Price	\$20.00 psf Gross	Agent(s)	Donna Green



698 MAIN STREET, MONCTON

[TAKE VIRTUAL TOUR](#)

Size	+/- 2,000 sf	Details	Versatile downtown studio space with unique architectural elements
Price	\$4,000/month Gross	Agent(s)	Donna Green



120 HALIFAX STREET, MONCTON

Size	+/- 1,262 and 2,500 sf	Details	Office and warehouse space located in the Victory Industrial Park
Price	\$6.50 psf Net	Agent(s)	Ian Franklin Adam MaGee



212 HALIFAX STREET, MONCTON

Size	+/- 1,600 sf	Details	Prime open concept retail/commercial space in central Moncton
Price	\$2,000/month Semi-Gross	Agent(s)	Donna Green

COMMERCIAL/RETAIL SPACE FOR LEASE

CLICK ON THE PHOTO TO OBTAIN MORE INFORMATION ONLINE



1644 MOUNTAIN ROAD, MONCTON

Size	+/- 1,600 sf	Details	High profile professional office, mixed use space, with high visibility
Price	\$14.00 psf Semi-Gross	Agent(s)	Donna Green



413 MAIN STREET, MONCTON

Size	Up to 6,000 sf	Details	3-storey mixed-use office/commercial space with stunning upgrades
Price	\$18-28 psf Semi-Gross	Agent(s)	Donna Green



409-411-415 ELMWOOD DRIVE, MONCTON

Size	Up to 21,021 sf	Details	Prime retail/commercial space or large scale development opportunity
Price	Please Contact	Agent(s)	Donna Green



844 MAIN STREET, MONCTON

[TAKE VIRTUAL TOUR](#)

Size	Up to +/- 2,920 sf	Details	Prominent downtown commercial space with a 50' dedicated storefront
Price	\$23.00 psf Gross	Agent(s)	Donna Green



540 PINEWOOD ROAD, RIVERVIEW

Size	+/- 1,657 to 5,273 sf	Details	Class A retail space in the heart of Riverview's retail development area
Price	\$14.00 psf Net	Agent(s)	Adam MaGee

FOR SALE

COMMERCIAL/OFFICE/RETAIL FOR SALE

INVESTMENT PROPERTIES FOR SALE

INDUSTRIAL PROPERTIES FOR SALE

LAND FOR SALE



COMMERCIAL/OFFICE/RETAIL FOR SALE

CLICK ON THE PHOTO TO OBTAIN MORE INFORMATION ONLINE



500 HILLSBOROUGH ROAD, RIVERVIEW

Size	+/- 13,000 sf	Details	Ideal redevelopment opportunity (3.2 acres) in a high traffic area
Price	\$895,000	Agent(s)	Ian Franklin Adam MaGee



77 ROONEY CRESCENT, MONCTON

[TAKE VIRTUAL TOUR](#)

Size	+/- 7,122 sf	Details	Well-maintained modern office building in the Moncton Industrial Park
Price	\$855,000	Agent(s)	Adam MaGee



178 HALIFAX STREET, MONCTON

Size	+/- 7,840 sf	Details	Ideal for service commercial or retail with renovated office space
Price	\$525,000	Agent(s)	Donna Green



345-347 ST. GEORGE STREET, MONCTON

[TAKE VIRTUAL TOUR](#)

Size	+/- 4,905 sf	Details	Modern downtown office building with two 2 nd floor apartments
Price	\$579,900	Agent(s)	Donna Green

INVESTMENT PROPERTIES FOR SALE

CLICK ON THE PHOTO TO OBTAIN MORE INFORMATION ONLINE



345-347 ST. GEORGE STREET, MONCTON

[TAKE VIRTUAL TOUR](#)

Size +/- 4,905 sf

Details Modern downtown office building with two 2nd floor apartments

Price \$579,900

Agent(s) Donna Green

INDUSTRIAL PROPERTIES FOR SALE

CLICK ON THE PHOTO TO OBTAIN MORE INFORMATION ONLINE



4585 ROUTE 134, COCAGNE

Size	+/- 23,300 sf	Details	Abundant warehouse space alongside professional office space
		Agent(s)	Adam MaGee Ian Franklin



178 HALIFAX STREET, MONCTON

Size	+/- 7,840 sf	Details	Warehouse space ideal for service commercial, industrial use or storage
Price	\$525,000	Agent(s)	Donna Green

LAND FOR SALE

CLICK ON THE PHOTO TO OBTAIN MORE INFORMATION ONLINE



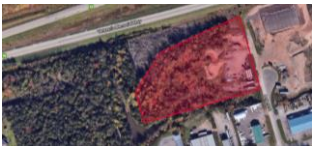
RIVER GLADE DEVELOPMENT LOT, RIVER GLADE

Size	+/- 39,073 sf	Details	Development lot with quick access to the Trans-Canada Highway
Price	\$9,900	Agent(s)	Adam MaGee



SILVERWOOD DEVELOPMENT LAND, FREDERICTON

Size	+/- 400 acres	Details	Rare opportunity for a large-scale development within Fredericton
Price	Please Contact	Agent(s)	Bill MacAvoy



BENJAMIN STREET LAND, DIEPPE

Size	+/- 5.3 acres	Details	High visibility development site with 700 ft of frontage on Highway 15
Price	\$799,000	Agent(s)	Ian Franklin Adam MaGee



980 MOUNTAIN ROAD, MONCTON

Size	+/- 25,280 sf	Details	Rare development opportunity located on Mountain Road
Price	\$480,000	Agent(s)	Adam MaGee

LAND FOR SALE

CLICK ON THE PHOTO TO OBTAIN MORE INFORMATION ONLINE



ST. GEORGE BOULEVARD AND WHEELER BOULEVARD LAND, MONCTON

Size	+/- 12.55 acres	Details	Prime development land with +/- 2,000' frontage on Wheeler Boulevard
Price	\$349,900	Agent(s)	Ian Franklin



IVAN RAND DRIVE, MONCTON

Size	+/- 17 acres	Details	Prime development site near Downtown Event Centre. Zoned SC
Price	\$2,400,000	Agent(s)	Ian Franklin



700 PINEWOOD ROAD, RIVERVIEW

Size	+/- 25,220 sf	Details	Prime development land opportunity located on Pinewood Road
Price	\$155,000	Agent(s)	Adam MaGee



SOLD & LEASED

A LIST OF PROPERTIES SOLD AND
LEASED BY OUR BROKERAGE TEAM IN
THE LAST 30 DAYS.

SOLD AND LEASED PROPERTIES



725 CHAMPLAIN STREET, DIEPPE

Size	+/- 2,000 sf	Details	Warehouse space with dock level loading
		Agent(s)	Adam Magee



4585 ROUTE 134, COCAGNE

Size	+/- 23,300 sf	Details	Abundant warehouse space alongside professional office space
		Agent(s)	Adam MaGee Ian Franklin



Donna Green
Commercial Sales & Leasing
506 387 6930 Direct
506 866 1319 Mobile
dgreen@cwatlantic.com



Adam MaGee
Commercial Sales & Leasing
506 387 6928 Direct
506 872 2507 Mobile
amagee@cwatlantic.com



Peter Ryan
Commercial Real Estate Advisor
506 387 6920 Direct
506 872 0921 Mobile
pryan@cwatlantic.com



Ian Franklin, CCIM
Vice President
506 863 7199 Mobile
ifranklin@cwatlantic.com



Bill MacAvoy
Managing Director
902 425 1872 Direct
902 880 0445 Mobile
bmacavoy@cwatlantic.com

cwatlantic.com