

# MONTHLY LISTINGS REPORT

Greater Moncton & Surrounding Areas  
New Brunswick | April 2021

# FOR LEASE

OFFICE SPACE FOR LEASE

---

INDUSTRIAL SPACE FOR LEASE

---

COMMERCIAL/RETAIL SPACE FOR LEASE

---



# OFFICE SPACE FOR LEASE

CLICK ON THE PHOTO TO OBTAIN MORE INFORMATION ONLINE



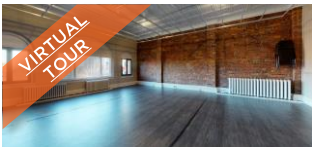
## 50 DRISCOLL CRESCENT (2<sup>nd</sup> FLOOR SUITES), MONCTON

<b>Size</b>	+/- 312 and 891 sf	<b>Details</b>	Two professional office suites (can be combined) with natural light
<b>Price</b>	Please Contact	<b>Agent(s)</b>	Donna Green



## 607 ST. GEORGE BOULEVARD, MONCTON

<b>Size</b>	+/- 2,532 sf	<b>Details</b>	Centrally located professional office space with great visibility
<b>Price</b>	\$16.00 psf Gross	<b>Agent(s)</b>	Donna Green



## 698 MAIN STREET, MONCTON

[TAKE VIRTUAL TOUR](#)

<b>Size</b>	+/- 2,000 sf	<b>Details</b>	Versatile downtown studio space with unique architectural elements
<b>Price</b>	\$4,000/month Gross	<b>Agent(s)</b>	Donna Green



## 120 HALIFAX STREET, MONCTON

<b>Size</b>	+/- 1,262 and 2,500 sf	<b>Details</b>	Office and warehouse space located in the Victory Industrial Park
<b>Price</b>	\$6.50 psf Net	<b>Agent(s)</b>	Ian Franklin   Adam MaGee



## 599 MAIN STREET, MONCTON

<b>Size</b>	+/- 812 and 1350 sf	<b>Details</b>	Appealing 2 <sup>nd</sup> floor office spaces in downtown Moncton
<b>Price</b>	\$1,500-1,750/month Gross	<b>Agent(s)</b>	Donna Green



## 77 ROONEY CRESCENT, MONCTON

[TAKE VIRTUAL TOUR](#)

<b>Size</b>	+/- 7,122 sf	<b>Details</b>	Well-maintained modern office space in the Moncton Industrial Park
<b>Price</b>	\$10.00 psf Net	<b>Agent(s)</b>	Adam MaGee



# OFFICE SPACE FOR LEASE

CLICK ON THE PHOTO TO OBTAIN MORE INFORMATION ONLINE



## 233-235 ST. GEORGE STREET, MONCTON

<b>Size</b>	+/- 1,300 to 3,000 sf	<b>Details</b>	2 storey building with rear parking and separate entrance for each floor
<b>Price</b>	\$8.00-11.00 psf Net	<b>Agent(s)</b>	Donna Green



## 1644 MOUNTAIN ROAD, MONCTON

<b>Size</b>	+/- 1,600 sf	<b>Details</b>	High profile professional office, mixed use space, with high visibility
<b>Price</b>	\$14.00 psf Semi-Gross	<b>Agent(s)</b>	Donna Green



## 50 DRISCOLL CRESCENT, MONCTON (GROUND FLOOR)

<b>Size</b>	+/- 912 sf	<b>Details</b>	Upgraded professional office space with storage space and natural light
<b>Price</b>	\$1,200/month Gross	<b>Agent(s)</b>	Donna Green



## 23 BIGGS DRIVE, RIVERVIEW

<b>Size</b>	+/- 2,000 sf	<b>Details</b>	Office and warehouse space on a busy street, ideal for skilled trades
<b>Price</b>	\$2,000/month + utilities	<b>Agent(s)</b>	Donna Green



## 720 MAIN STREET, MONCTON

<b>Size</b>	Up to 4,500 sf	<b>Details</b>	2 <sup>nd</sup> floor office space with various suites and sizes available
<b>Price</b>	\$17.00 psf Gross	<b>Agent(s)</b>	Donna Green



## 196 ROBINSON COURT, MONCTON

<b>Size</b>	+/- 1,000 and 2,000 sf	<b>Details</b>	Completely renovated office space(s) in the heart of Downtown Moncton
<b>Price</b>	\$18.00 psf Gross	<b>Agent(s)</b>	Donna Green

# OFFICE SPACE FOR LEASE

CLICK ON THE PHOTO TO OBTAIN MORE INFORMATION ONLINE



## 844 MAIN STREET, MONCTON

[TAKE VIRTUAL TOUR](#)

<b>Size</b>	Up to 2,920 sf	<b>Details</b>	Modern, downtown ground floor space with exposed brick and natural light
<b>Price</b>	\$23.00 psf Gross	<b>Agent(s)</b>	Donna Green



## 413 MAIN STREET, MONCTON

<b>Size</b>	Up to 6,000 sf	<b>Details</b>	3-storey mixed-use office/commercial space with stunning upgrades
<b>Price</b>	\$18-28 psf Semi-Gross	<b>Agent(s)</b>	Donna Green



## 860 MAIN STREET, MONCTON

[TAKE VIRTUAL TOUR](#)

<b>Size</b>	+/- 949 to 1,627 sf	<b>Details</b>	Downtown office space with great views and ample natural light
<b>Price</b>	\$13.00 psf Net	<b>Agent(s)</b>	Donna Green



## 343 ST. GEORGE STREET, MONCTON

<b>Size</b>	+/- 1,400 and 3,500 sf	<b>Details</b>	2 <sup>nd</sup> storey office units available. Open concept, industrial style office space
<b>Price</b>	\$13-17 Semi-Gross	<b>Agent(s)</b>	Donna Green   Adam MaGee



## 232-236 ST. GEORGE STREET, MONCTON

<b>Size</b>	+/- 278 to 6,551 sf	<b>Details</b>	Various suites, 5-storey multi-tenant office building close to downtown
<b>Price</b>	\$18-20 psf Gross	<b>Agent(s)</b>	Donna Green



## 22 CHURCH STREET – COMMUNITY PEACE CENTRE, MONCTON

[TAKE VIRTUAL TOUR](#)

<b>Size</b>	+/- 190 to 13,496 sf	<b>Details</b>	Multi-tenant office building in the heart of downtown Moncton
<b>Price</b>	\$11.00 psf Net	<b>Agent(s)</b>	Ian Franklin   Peter Ryan

# INDUSTRIAL SPACE FOR LEASE

CLICK ON THE PHOTO TO OBTAIN MORE INFORMATION ONLINE



## 1070 ST. GEORGE BOULEVARD, MONCTON

<b>Size</b>	+/- 20,786 sf	<b>Details</b>	Open industrial space with existing offices in a highly visible building
<b>Price</b>	\$6.75 psf Net	<b>Agent(s)</b>	Donna Green   Adam MaGee



## 653 BABIN STREET, DIEPPE

<b>Size</b>	+/- 890 sf	<b>Details</b>	Open warehouse space with grade loading in Dieppe Industrial Park
<b>Price</b>	\$8.50 psf Net	<b>Agent(s)</b>	Adam MaGee



## 80 DRISCOLL CRESCENT, MONCTON

<b>Size</b>	+/- 12,009 sf	<b>Details</b>	High quality warehouse space with +/- 1,500 of office space
<b>Price</b>	\$10.00 psf Gross	<b>Agent(s)</b>	Ian Franklin   Adam MaGee



## 23 BIGGS DRIVE, RIVERVIEW

<b>Size</b>	+/- 2,000 sf	<b>Details</b>	Office and warehouse space on a busy street, ideal for skilled trades
<b>Price</b>	\$2,000/month + utilities	<b>Agent(s)</b>	Donna Green



## 178 HALIFAX STREET, MONCTON

<b>Size</b>	+/- 2,600 sf	<b>Details</b>	Warehouse space ideal for service commercial, industrial use or storage
<b>Price</b>	\$1,500/month Semi-Gross	<b>Agent(s)</b>	Donna Green



## 725 CHAMPLAIN STREET, DIEPPE

<b>Size</b>	+/- 2,000 sf	<b>Details</b>	Warehouse space with dock level loading
<b>Price</b>	\$10.25 psf Net	<b>Agent(s)</b>	Adam MaGee

# INDUSTRIAL SPACE FOR LEASE

CLICK ON THE PHOTO TO OBTAIN MORE INFORMATION ONLINE



**227 HENRI DUNANT STREET, MONCTON**

[TAKE VIRTUAL TOUR](#)

<b>Size</b>	+/- 6,000 sf	<b>Details</b>	Prime industrial space with +/- 26' ceilings and office space
<b>Price</b>	\$6.75 psf Net	<b>Agent(s)</b>	Adam MaGee

# COMMERCIAL/RETAIL SPACE FOR LEASE

CLICK ON THE PHOTO TO OBTAIN MORE INFORMATION ONLINE



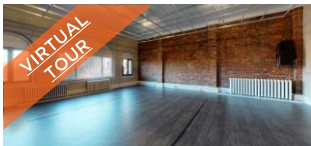
## 500 HILLSBOROUGH ROAD, RIVERVIEW

<b>Size</b>	+/- 13,000 sf	<b>Details</b>	Multi-tenant building on a 3.2 acre paved lot in a high traffic area
<b>Price</b>	\$10.00 psf Net	<b>Agent(s)</b>	Ian Franklin   Adam MaGee



## 232-236 ST. GEORGE STREET (UNIT #01), MONCTON

<b>Size</b>	+/- 2,710 sf	<b>Details</b>	Corner ground floor commercial space in high-profile downtown building
<b>Price</b>	\$20.00 psf Gross	<b>Agent(s)</b>	Donna Green



## 698 MAIN STREET, MONCTON

[TAKE VIRTUAL TOUR](#)

<b>Size</b>	+/- 2,000 sf	<b>Details</b>	Versatile downtown studio space with unique architectural elements
<b>Price</b>	\$4,000/month Gross	<b>Agent(s)</b>	Donna Green



## 120 HALIFAX STREET, MONCTON

<b>Size</b>	+/- 1,262 and 2,500 sf	<b>Details</b>	Office and warehouse space located in the Victory Industrial Park
<b>Price</b>	\$6.50 psf Net	<b>Agent(s)</b>	Ian Franklin   Adam MaGee



## 28 BIGGS DRIVE, RIVERVIEW

<b>Size</b>	+/- 10,720 sf	<b>Details</b>	Impressive building and large lot for sale or lease, ideal for many uses
<b>Price</b>	Please Contact	<b>Agent(s)</b>	Donna Green



## 212 HALIFAX STREET, MONCTON

<b>Size</b>	+/- 1,600 sf	<b>Details</b>	Prime open concept retail/commercial space in central Moncton
<b>Price</b>	\$2,000/month Semi-Gross	<b>Agent(s)</b>	Donna Green



# COMMERCIAL/RETAIL SPACE FOR LEASE

CLICK ON THE PHOTO TO OBTAIN MORE INFORMATION ONLINE



## 1644 MOUNTAIN ROAD, MONCTON

<b>Size</b>	+/- 1,600 sf	<b>Details</b>	High profile professional office, mixed use space, with high visibility
<b>Price</b>	\$14.00 psf Semi-Gross	<b>Agent(s)</b>	Donna Green



## 413 MAIN STREET, MONCTON

<b>Size</b>	Up to 6,000 sf	<b>Details</b>	3-storey mixed-use office/commercial space with stunning upgrades
<b>Price</b>	\$18-28 psf Semi-Gross	<b>Agent(s)</b>	Donna Green



## 409-411-415 ELMWOOD DRIVE, MONCTON

<b>Size</b>	Up to 21,021 sf	<b>Details</b>	Prime retail/commercial space or large scale development opportunity
<b>Price</b>	Please Contact	<b>Agent(s)</b>	Donna Green



## 844 MAIN STREET, MONCTON

[TAKE VIRTUAL TOUR](#)

<b>Size</b>	Up to +/- 2,920 sf	<b>Details</b>	Prominent downtown commercial space with a 50' dedicated storefront
<b>Price</b>	\$23.00 psf Gross	<b>Agent(s)</b>	Donna Green



## 540 PINEWOOD ROAD, RIVERVIEW

<b>Size</b>	+/- 1,560 to 6,909 sf	<b>Details</b>	Class A retail space in the heart of Riverview's retail development area
<b>Price</b>	\$14.00 psf Net	<b>Agent(s)</b>	Adam MaGee

# FOR SALE

COMMERCIAL/OFFICE/RETAIL FOR SALE

---

INVESTMENT PROPERTIES FOR SALE

---

INDUSTRIAL PROPERTIES FOR SALE

---

LAND FOR SALE

---



# COMMERCIAL/OFFICE/RETAIL FOR SALE

CLICK ON THE PHOTO TO OBTAIN MORE INFORMATION ONLINE



## 500 HILLSBOROUGH ROAD, RIVERVIEW

<b>Size</b>	+/- 13,000 sf	<b>Details</b>	Ideal redevelopment opportunity (3.2 acres) in a high traffic area
<b>Price</b>	\$895,000	<b>Agent(s)</b>	Ian Franklin   Adam MaGee



## 77 ROONEY CRESCENT, MONCTON

[TAKE VIRTUAL TOUR](#)

<b>Size</b>	+/- 7,122 sf	<b>Details</b>	Well-maintained modern office building in the Moncton Industrial Park
<b>Price</b>	\$855,000	<b>Agent(s)</b>	Adam MaGee



## 178 HALIFAX STREET, MONCTON

<b>Size</b>	+/- 7,840 sf	<b>Details</b>	Ideal for service commercial or retail with renovated office space
<b>Price</b>	\$525,000	<b>Agent(s)</b>	Donna Green



## 345-347 ST. GEORGE STREET, MONCTON

[TAKE VIRTUAL TOUR](#)

<b>Size</b>	+/- 4,905 sf	<b>Details</b>	Modern downtown office building with two 2 <sup>nd</sup> floor apartments
<b>Price</b>	\$579,900	<b>Agent(s)</b>	Donna Green

# INVESTMENT PROPERTIES FOR SALE

CLICK ON THE PHOTO TO OBTAIN MORE INFORMATION ONLINE



**345-347 ST. GEORGE STREET, MONCTON**

[TAKE VIRTUAL TOUR](#)

**Size** +/- 4,905 sf

**Details** Modern downtown office building with two 2<sup>nd</sup> floor apartments

**Price** \$579,900

**Agent(s)** Donna Green

# INDUSTRIAL PROPERTIES FOR SALE

CLICK ON THE PHOTO TO OBTAIN MORE INFORMATION ONLINE



## 4585 ROUTE 134, COCAGNE

<b>Size</b>	+/- 23,300 sf	<b>Details</b>	Abundant warehouse space alongside professional office space
<b>Price</b>	\$650,000	<b>Agent(s)</b>	Adam MaGee   Ian Franklin



## 178 HALIFAX STREET, MONCTON

<b>Size</b>	+/- 7,840 sf	<b>Details</b>	Warehouse space ideal for service commercial, industrial use or storage
<b>Price</b>	\$525,000	<b>Agent(s)</b>	Donna Green



# LAND FOR SALE

CLICK ON THE PHOTO TO OBTAIN MORE INFORMATION ONLINE



## RIVER GLADE DEVELOPMENT LOT, RIVER GLADE

<b>Size</b>	+/- 39,073 sf	<b>Details</b>	Development lot with quick access to the Trans-Canada Highway
<b>Price</b>	\$9,900	<b>Agent(s)</b>	Adam MaGee



## SILVERWOOD DEVELOPMENT LAND, FREDERICTON

<b>Size</b>	+/- 400 acres	<b>Details</b>	Rare opportunity for a large-scale development within Fredericton
<b>Price</b>	Please Contact	<b>Agent(s)</b>	Bill MacAvoy



## 313 MOUNTAIN ROAD & 9 BROMLEY AVENUE, MONCTON

<b>Size</b>	+/- 14,750 sf	<b>Details</b>	2 buildings and large corner lot with potential for redevelopment
<b>Price</b>	\$325,000	<b>Agent(s)</b>	Ian Franklin



## BENJAMIN STREET LAND, DIEPPE

<b>Size</b>	+/- 5.3 acres	<b>Details</b>	High visibility development site with 700 ft of frontage on Highway 15
<b>Price</b>	\$799,000	<b>Agent(s)</b>	Ian Franklin   Adam MaGee



## 980 MOUNTAIN ROAD, MONCTON

<b>Size</b>	+/- 25,280 sf	<b>Details</b>	Rare development opportunity located on Mountain Road
<b>Price</b>	\$480,000	<b>Agent(s)</b>	Adam MaGee



## 700 PINEWOOD ROAD, RIVERVIEW

<b>Size</b>	+/- 25,220 sf	<b>Details</b>	Prime development land opportunity located on Pinewood Road
<b>Price</b>	\$155,000	<b>Agent(s)</b>	Adam MaGee

# LAND FOR SALE

CLICK ON THE PHOTO TO OBTAIN MORE INFORMATION ONLINE



## ST. GEORGE BOULEVARD AND WHEELER BOULEVARD LAND, MONCTON

<b>Size</b>	+/- 12.55 acres	<b>Details</b>	Prime development land with +/- 2,000' frontage on Wheeler Boulevard
<b>Price</b>	\$349,900	<b>Agent(s)</b>	Ian Franklin



## IVAN RAND DRIVE, MONCTON

<b>Size</b>	+/- 17 acres	<b>Details</b>	Prime development site near Downtown Event Centre. Zoned SC
<b>Price</b>	\$2,400,000	<b>Agent(s)</b>	Ian Franklin



# SOLD & LEASED

A LIST OF PROPERTIES SOLD AND  
LEASED BY OUR BROKERAGE TEAM IN  
THE LAST 30 DAYS.

---

# SOLD AND LEASED PROPERTIES



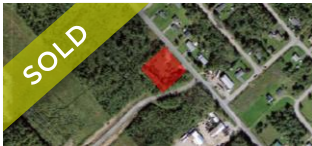
## 28 BIGGS DRIVE, RIVERVIEW

<b>Size</b>	+/- 10,720 sf	<b>Details</b>	Impressive building and large lot, ideal for many uses
		<b>Agent(s)</b>	Donna Green



## 61 PACIFIC AVENUE, MONCTON

<b>Size</b>	640 sf	<b>Details</b>	Commercial or office space located in retail/mixed-use service plaza
		<b>Agent(s)</b>	Ian Franklin



## HWY 134, BATHURST

<b>Size</b>	+/- 40,472 sf	<b>Details</b>	Prime development site on HWY 134 with 200' of frontage
		<b>Agent(s)</b>	Adam MaGee



**Donna Green**  
Commercial Sales & Leasing  
506 387 6930 Direct  
506 866 1319 Mobile  
[dgreen@cwatlantic.com](mailto:dgreen@cwatlantic.com)



**Adam MaGee**  
Commercial Sales & Leasing  
506 387 6928 Direct  
506 872 2507 Mobile  
[amagee@cwatlantic.com](mailto:amagee@cwatlantic.com)



**Peter Ryan**  
Commercial Real Estate Advisor  
506 387 6920 Direct  
506 872 0921 Mobile  
[pryan@cwatlantic.com](mailto:pryan@cwatlantic.com)



**Ian Franklin, CCIM**  
Vice President  
506 863 7199 Mobile  
[ifranklin@cwatlantic.com](mailto:ifranklin@cwatlantic.com)



**Bill MacAvoy**  
Managing Director  
902 425 1872 Direct  
902 880 0445 Mobile  
[bmacavoy@cwatlantic.com](mailto:bmacavoy@cwatlantic.com)

[cwatlantic.com](http://cwatlantic.com)