

# Monthly Listings Report

Halifax, Nova Scotia

September 2017



# For Lease

Office Space for Lease

Industrial Space for Lease

Commercial/Retail Space for Lease





# Office Space For Lease

Click on a property photo to obtain more information online



## NEW, 647 BEDFORD HIGHWAY (UNIT 102 & 103), BEDFORD

<b>Size</b>	Up to 6,400 sf	<b>Details</b>	Beautifully finished office space overlooking the Bedford Basin.
<b>Price</b>	\$28.00 psf Gross	<b>Agent(s)</b>	Marc Cheverie



## NEW, 7 MELLOR AVENUE, DARTMOUTH

<b>Size</b>	9,000 sf	<b>Details</b>	Modern, bright office space with optional 13,000 sf warehouse space.
<b>Price</b>	\$15.00 psf Gross	<b>Agent(s)</b>	James Collins   Marc Cheverie   Bill MacAvoy



## 68 HIGHFIELD PARK DRIVE, DARTMOUTH

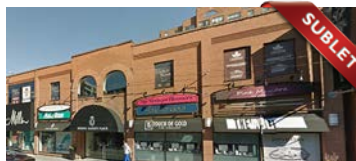
[VIRTUAL TOUR](#)

<b>Size</b>	450 & 2,200 sf	<b>Details</b>	Brand new modern office space close to Burnside Business Park.
<b>Price</b>	\$14.00 psf Net	<b>Agent(s)</b>	Marc Cheverie   James Collins



## 123 CHAIN LAKE DRIVE, HALIFAX

<b>Size</b>	2,175 sf	<b>Details</b>	Brand new construction on busy thoroughfare of Chain Lake Drive.
<b>Price</b>	\$12.00 psf Net	<b>Agent(s)</b>	Marc Cheverie



## SPRING GARDEN PLACE, 5640 SPRING GARDEN ROAD, HALIFAX

<b>Size</b>	1,500 sf	<b>Details</b>	Access to underground parking, located in the heart of Downtown!
<b>Price</b>	Negotiable	<b>Agent(s)</b>	Marc Cheverie



## 5226 ST. MARGARETS BAY ROAD, TANTALLON

<b>Size</b>	1,705 sf	<b>Details</b>	Located at main commercial intersection, bright space with ample parking!
<b>Price</b>	\$17.00 psf Net	<b>Agent(s)</b>	Steven Dexter   Meaghan MacDougall

# Office Space For Lease

Click on a property photo to obtain more information online



## 3514 JOSEPH HOWE DRIVE, HALIFAX

<b>Size</b>	1,883 - 2,918 sf	<b>Details</b>	Highly visible street level office/commercial space with on-site parking!
<b>Price</b>	\$15.00 psf Net	<b>Agent(s)</b>	Jamie Ferguson



## KEARNEY LAKE PLAZA, KEARNEY LAKE ROAD, BEDFORD

<b>Size</b>	4,000 sf (demiseable)	<b>Details</b>	Newly constructed retail & office space now ready for possession!
<b>Price</b>	\$20 psf Net	<b>Agent(s)</b>	Bill MacAvoy



## TD CENTRE, 1791 BARRINGTON STREET, HALIFAX

<b>Size</b>	2,550 sf	<b>Details</b>	Prime opportunity in Downtown Class AAA building, expires Nov. 2017.
<b>Price</b>	Please Contact	<b>Agent(s)</b>	Bill MacAvoy



## CANADA TRUST COURT, 1475 BEDFORD HIGHWAY, BEDFORD

<b>Size</b>	1,180 sf	<b>Details</b>	Highly visible ground floor office sublet with & on-site parking!
<b>Price</b>	Please Contact	<b>Agent(s)</b>	Jamie Ferguson



## CORNWALLIS HOUSE, 5475 SPRING GARDEN ROAD, HALIFAX

[VIRTUAL TOUR](#)

<b>Size</b>	1,493 – 3,600 sf	<b>Details</b>	Professionally managed, with underground parking & rooftop terraces.
<b>Price</b>	\$ 16.00 psf Net	<b>Agent(s)</b>	Jamie Ferguson



## 3600 KEMPT ROAD, HALIFAX

<b>Size</b>	966 – 2,753 sf	<b>Details</b>	2 <sup>nd</sup> floor office space in high-traffic location. Great signage opportunity!
<b>Price</b>	\$12.00 psf Net	<b>Agent(s)</b>	Marc Cheverie   James Collins

# Office Space For Lease

Click on a property photo to obtain more information online



## 22 WADDELL AVENUE, DARTMOUTH

<b>Size</b>	2,000 sf	<b>Details</b>	2 <sup>nd</sup> floor office space in easily accessible location. Ample on-site parking!
<b>Price</b>	\$15.00 psf Gross	<b>Agent(s)</b>	James Collins   Marc Cheverie



## 1160 BEDFORD HIGHWAY, BEDFORD

<b>Size</b>	Up to 2,408 sf	<b>Details</b>	Convenient Bedford location with easy access & great signage opportunity!
<b>Price</b>	\$14.00 psf Net	<b>Agent(s)</b>	Meaghan MacDougall   Steven Dexter



## 1378 BEDFORD HIGHWAY, BEDFORD

<b>Size</b>	3,500 sf	<b>Details</b>	Lease term negotiable; great exposure! Heat is included in Gross rent!
<b>Price</b>	\$3,000/mo. Gross	<b>Agent(s)</b>	Jamie Ferguson



PARKING INCLUDED

## 2050 GOTTINGEN STREET, HALIFAX

<b>Size</b>	2,672 sf	<b>Details</b>	Ideal for professional services, childcare, etc. Surface parking is included!
<b>Price</b>	\$5,500 per month Gross	<b>Agent(s)</b>	Steven Dexter



## 5476 SPRING GARDEN ROAD, HALIFAX

<b>Size</b>	250 & 1,500 sf units	<b>Details</b>	Modern, well located office space near numerous downtown amenities!
<b>Price</b>	\$3,500 / mo.	<b>Agent(s)</b>	Steven Dexter

# Industrial Space For Lease

Click on a property photo to obtain more information online



## NEW, 7 MELLOR AVENUE, DARTMOUTH

<b>Size</b>	9,000 sf	<b>Details</b>	Modern, bright office space with optional 13,000 sf warehouse space.
<b>Price</b>	\$15.00 psf Gross	<b>Agent(s)</b>	James Collins   Marc Cheverie   Bill MacAvoy



## NEW, 100 MACGREGOR AVENUE, STELLARTON

<b>Size</b>	5,055 sf	<b>Details</b>	Corner showroom, office & warehouse space with industrial park frontage.
<b>Price</b>	\$3.75 psf Net	<b>Agent(s)</b>	James Collins



## 588 BARNES DRIVE, HALIFAX

<b>Size</b>	14,753 sf	<b>Details</b>	Bright open affordable office space near Halifax Airport.
<b>Price</b>	Please Contact	<b>Agent(s)</b>	James Collins   Marc Cheverie



## 677 BARNES DRIVE, HALIFAX

<b>Size</b>	12,500 sf	<b>Details</b>	Hangar with airside access and 3,000 sf of office, not limited to aviation.
<b>Price</b>	Please Contact	<b>Agent(s)</b>	James Collins   Marc Cheverie



## 53 & 93 MEMORIAL DRIVE, NORTH SYDNEY

<b>Size</b>	Up to 167,372 sf	<b>Details</b>	Excellent location 3 blocks from Port of Sydney. Min 24' clear ceilings.
<b>Price</b>	\$4.50 psf Net	<b>Agent(s)</b>	James Collins   Steven Dexter



## 89 CUTLER AVENUE, DARTMOUTH

<b>Size</b>	6,089 sf	<b>Details</b>	Great showroom potential, new construction, mezzanine & grade loading!
<b>Price</b>	\$7.95 psf Net	<b>Agent(s)</b>	James Collins   Steven Dexter

# Industrial Space For Lease

Click on a property photo to obtain more information online



549 BARNES DRIVE, HALIFAX			
Size	Up to 18,900 sf	Details	Hangar space with 2,500 sf of office. Ramp access, use limited to aviation.
Price	Please Contact	Agent(s)	James Collins   Marc Cheverie



# Commercial/Retail Space For Lease

Click on a property photo to obtain more information online



## NEW, 3514 JOSEPH HOWE DRIVE, HALIFAX

<b>Size</b>	5,175 sf	<b>Details</b>	Affordable ground floor commercial space on busy Sackville Drive.
<b>Price</b>	\$15.00 psf Gross	<b>Agent(s)</b>	Jamie Ferguson



## 589 PRINCE STREET, TRURO

<b>Size</b>	4,000 sf	<b>Details</b>	Ground floor commercial space, ideal for financial or professional services.
<b>Price</b>	Please Contact	<b>Agent(s)</b>	Marc Cheverie



## 6 MONTHS FREE RENT, KEARNEY LAKE PLAZA, KEARNEY LAKE DRIVE, BEDFORD

<b>Size</b>	3,000 sf remaining	<b>Details</b>	Prime location, high visibility, significant near term population growth.
<b>Price</b>	\$25.00 psf Net	<b>Agent(s)</b>	Bill MacAvoy



## 68 HIGHFIELD PARK DRIVE, DARTMOUTH

[VIRTUAL TOUR](#)

<b>Size</b>	Up to 7,000 sf	<b>Details</b>	Brand new bright ground floor retail space close to Burnside Business Park!
<b>Price</b>	\$16.00 psf Net	<b>Agent(s)</b>	Marc Cheverie   James Collins



## 123 CHAIN LAKE DRIVE, HALIFAX

<b>Size</b>	2,175 sf	<b>Details</b>	Brand new construction on busy through fare of Chain Lake Drive.
<b>Price</b>	Starting at \$12 psf Net	<b>Agent(s)</b>	Marc Cheverie



# Commercial/Retail Space For Lease

Click on a property photo to obtain more information online



## DRIVE-THRU! 5226 ST. MARGARETS BAY ROAD, TANTALLON

<b>Size</b>	2,065 sf	<b>Details</b>	Located at main commercial intersection, bright space with ample parking!
<b>Price</b>	\$25.00 psf Net	<b>Agent(s)</b>	Meaghan MacDougall   Steven Dexter



## 3600 KEMPT ROAD, HALIFAX

<b>Size</b>	2,866 sf	<b>Details</b>	Ground floor retail unit in high-traffic location. Great signage opportunity!
<b>Price</b>	\$12.00 psf Net	<b>Agent(s)</b>	Marc Cheverie   James Collins



## 2086 CREIGHTON STREET, HALIFAX

<b>Size</b>	900 sf	<b>Details</b>	Modern & open ground floor retail space in Halifax's vibrant North End!
<b>Price</b>	\$2,000/mo. Semi-Gross	<b>Agent(s)</b>	Marc Cheverie   James Collins



## PARK VICTORIA, 1333 SOUTH PARK STREET, HALIFAX

<b>Size</b>	1,817 sf	<b>Details</b>	Ideal for a variety of retail or restaurant uses, ground floor in apt. complex!
<b>Price</b>	\$29 psf Semi-Gross	<b>Agent(s)</b>	Steven Dexter



## SOHO SQUARE, SOUTH ST. & HOLLIS ST., HALIFAX

<b>Size</b>	Up to 4,232 sf	<b>Details</b>	1,000 sf bays; high exposure across from the Westin, Via Rail & Emera!
<b>Price</b>	Pricing varies	<b>Agent(s)</b>	Bill MacAvoy



## 3514 JOSEPH HOWE DRIVE, HALIFAX

<b>Size</b>	1,883 - 2,918 sf	<b>Details</b>	Highly visible street level office/commercial space with on-site parking!
<b>Price</b>	\$15.00 psf Net	<b>Agent(s)</b>	Jamie Ferguson

# Commercial/Retail Space For Lease

Click on a property photo to obtain more information online



## 50% LEASED, THE KEEP, 6112 QUINPOOL ROAD, HALIFAX

[AERIAL VIDEO](#)

<b>Size</b>	1,280 – 5,949 sf	<b>Details</b>	Q1 2018, ground floor commercial/retail, busy corner of main arterial road.
<b>Price</b>	\$35.00 psf Net	<b>Agent(s)</b>	Steven Dexter



## 9198 COMMERCIAL DRIVE, NEW MINAS

<b>Size</b>	2,245 sf	<b>Details</b>	Prime retail space in the premiere shopping area of the Valley!
<b>Price</b>	\$14.00 psf Net	<b>Agent(s)</b>	James Collins



## 50% LEASED, POINT NORTH, 3065 ROBIE STREET, HALIFAX

<b>Size</b>	Up to 8,700 sf	<b>Details</b>	Brand new retail units offer exposure to over 30,000 vehicles per day.
<b>Price</b>	\$24.00 psf Net	<b>Agent(s)</b>	Steven Dexter



## MONAGHAN SQUARE, 6100 YOUNG STREET, HALIFAX

<b>Size</b>	Up to 33,000 sf	<b>Details</b>	Available in Summer 2017! Ground floor retail with excellent visibility.
<b>Price</b>	Please contact	<b>Agent(s)</b>	Jamie Ferguson



## SOMERSET PLACE, 1030 SOUTH PARK STREET, HALIFAX

<b>Size</b>	1,100 sf	<b>Details</b>	Ideal for a retail or service based tenant, adjacent to Uncommon Grounds.
<b>Price</b>	\$2,250/mo. Semi-Gross	<b>Agent(s)</b>	Steven Dexter

# Land For Lease

Click on a property photo to obtain more information online



613 MAIN STREET (HWY. 7), DARTMOUTH				<a href="#">AERIAL VIDEO</a>
Size	6.26 acres	Details	Highly visible, waterfront retail land for sale or lease at busy intersection!	
Price	\$2.50 psf	Agent(s)	Steven Dexter	

# For Sale

Office & Industrial Space for Sale

Commercial/Retail Space for Sale

Investment Properties for Sale

Land for Sale





# Office, Industrial & Commercial Space For Sale

Click on a property photo to obtain more information online



## 1120 UPPER PRINCE STREET, SYDNEY

<b>Size</b>	32,000 sf	<b>Details</b>	Refrigerated storage & distribution facility with 26' ceilings. Dock & grade.
<b>Price</b>	\$899,000	<b>Agent(s)</b>	James Collins   Marc Cheverie



## 53 & 93 MEMORIAL DRIVE, NORTH SYDNEY

<b>Size</b>	Up to 167,372 sf	<b>Details</b>	Excellent location 3 blocks from Port of Sydney. Min 24' clear ceilings.
<b>Price</b>	Please Contact	<b>Agent(s)</b>	James Collins   Steven Dexter



## 19 AKERLEY BOULEVARD, DARTMOUTH

<b>Size</b>	22,750 sf	<b>Details</b>	Dock & grade loading, 5 ton crane, 7,000 sf mezzanine office.
<b>Price</b>	\$1,195,000	<b>Agent(s)</b>	Bill MacAvoy



## FRANCHISE OPPORTUNITIES, PANNIZZA: Canada's Hottest Franchise Opportunity!

<b>Size</b>	300 – 1,800 sf	<b>Details</b>	Immediate opportunities are available throughout Atlantic Canada!
<b>Price</b>	Please Contact	<b>Agent(s)</b>	Jamie Ferguson



## 89 CUTLER AVENUE, DARTMOUTH

<b>Size</b>	6,089 sf	<b>Details</b>	Great showroom potential, new construction, mezzanine & grade loading!
<b>Price</b>	\$745,000	<b>Agent(s)</b>	James Collins   Steven Dexter

# Investment & Hotel Properties For Sale

[Click on a property photo to obtain more information online](#)



## **NEW**, 752 BEDFORD HIGHWAY, BEDFORD

<b>Size</b>	7,301 sf	<b>Details</b>	Comprised of two sites; can be sold with vacant possession or occupied.
<b>Price</b>	\$1,295,000	<b>Agent(s)</b>	Steven Dexter



## **PRICE REDUCED**, 22 WADDELL AVENUE, DARTMOUTH

<b>Size</b>	6,306 sf	<b>Details</b>	Rare small investment play, 7.7% cap rate. In easily accessible location.
<b>Price</b>	\$539,000	<b>Agent(s)</b>	James Collins

# Land For Sale

Click on a property photo to obtain more information online



## WENTWORTH ROAD, WINDSOR

<b>Size</b>	8.3 acres	<b>Details</b>	Zoned commercial, with improved infrastructure & easy highway access.
<b>Price</b>	\$4.93 psf	<b>Agent(s)</b>	James Collins



## 613 MAIN STREET (HWY. 7), DARTMOUTH

[AERIAL VIDEO](#)

<b>Size</b>	6.26 acres	<b>Details</b>	Highly visible, waterfront retail land for sale or lease at busy intersection!
<b>Price</b>	\$20.00 psf	<b>Agent(s)</b>	Steven Dexter



## ONE PARCEL SOLD, HOGAN COURT, LARRY UTECK WEST & HWY 102, BEDFORD

<b>Size</b>	2 – 11.7 acres	<b>Details</b>	Great highway exposure   Close to existing retail at Larry Uteck Boulevard.
<b>Price</b>	Please Contact	<b>Agent(s)</b>	Bill MacAvoy



## BRUNELLO ESTATES COMMERCIAL OPPORTUNITY, TIMBERLEA

<b>Size</b>	Up to 5.75 acres	<b>Details</b>	High visibility commercial land sites with flexible use available now!
<b>Price</b>	\$12.00 psf	<b>Agent(s)</b>	Steven Dexter



## HAMMONDS PLAINS ROAD & FRENCH VILLAGE STATION ROAD, TANTALLON

<b>Size</b>	Approx 2.5 acres	<b>Details</b>	Multi-Use zoning, great corner lot with lots of exposure.
<b>Price</b>	\$575,000	<b>Agent(s)</b>	Jamie Ferguson



## MILL ISLAND, 368 NESBITT ROAD, WINDSOR

<b>Size</b>	+/- 5 acres	<b>Details</b>	High exposure, multi-use land development opportunity on Highway 101.
<b>Price</b>	\$999,000	<b>Agent(s)</b>	James Collins

# Sold & Leased

A list of properties sold & leased by our  
brokerage team in the last 30 days.





# Sold & Leased Properties

Click on a property photo to obtain more information online



UNDER AGREEMENT, 19 AKERLEY BOULEVARD, DARTMOUTH			
Size	22,750 sf	Details	Dock & grade loading, 5 ton crane, 7,000 sf mezzanine office.
Price	\$5.75 psf Net	Agent(s)	Bill MacAvoy

cwatlantic.com



**Marc Cheverie, MSc**  
Occupier Services  
902.482.2998 Direct  
902.579.3488 Mobile  
902.425.7374 Fax  
[mcheverie@cwatlantic.com](mailto:mcheverie@cwatlantic.com)



**James Collins**  
Industrial Leasing & Sales  
902.425.1444 Direct  
902.489.0015 Mobile  
902.425.7374 Fax  
[jcollins@cwatlantic.com](mailto:jcollins@cwatlantic.com)



**Steven Dexter**  
Vice President  
902.425.0377 Direct  
902.222.2399 Mobile  
902.425.7374 Fax  
[sdexter@cwatlantic.com](mailto:sdexter@cwatlantic.com)



**Jamie Ferguson**  
Commercial Sales & Leasing  
902.425.4009 Direct  
902.209.5123 Mobile  
902.425.7374 Fax  
[jferguson@cwatlantic.com](mailto:jferguson@cwatlantic.com)



**Bill MacAvoy**  
Managing Director  
902.425.1872 Direct  
902.880.0445 Mobile  
902.425.7374 Fax  
[bmacavoy@cwatlantic.com](mailto:bmacavoy@cwatlantic.com)



**Stefanie MacDonald**  
Director of Marketing  
902.332.1560 Direct  
902.293.4073 Mobile  
902.425.7374 Fax  
[smacdonald@cwatlantic.com](mailto:smacdonald@cwatlantic.com)



**Wayne MacDonald, AACI, P.App**  
VP. Valuation & Advisory  
902.482.2999 Direct  
902.425.7374 Fax  
[wayne.macdonald@ca.cashwake.com](mailto:wayne.macdonald@ca.cashwake.com)



**Meaghan MacDougall**  
Leasing & Sales Representative  
902.425.1444 Direct  
902.266.6211 Mobile  
902.425.7374 Fax  
[mmacdougall@cwatlantic.com](mailto:mmacdougall@cwatlantic.com)