

# MONTHLY LISTINGS REPORT

Greater Moncton & Surrounding Areas  
New Brunswick | January 2019



# FOR LEASE

OFFICE SPACE FOR LEASE

---

INDUSTRIAL SPACE FOR LEASE

---

COMMERCIAL/RETAIL SPACE FOR LEASE

---





# OFFICE SPACE FOR LEASE

CLICK ON THE PHOTO TO OBTAIN MORE INFORMATION ONLINE



## 196 ROBINSON COURT, MONCTON

<b>Size</b>	+/- 2,000 sf	<b>Details</b>	Completely renovated professional office space with a lot of character
<b>Price</b>	\$18.00 psf Gross	<b>Agent(s)</b>	Donna Green



## 653 BABIN STREET, DIEPPE

<b>Size</b>	+/- 2,200 sf	<b>Details</b>	Office and warehouse with highway visibility
<b>Price</b>	\$7.50 - \$9.00 psf Net	<b>Agent(s)</b>	Ian Franklin   Sandra Paquet



## 206 PINE GLEN ROAD, RIVERVIEW

<b>Size</b>	+/- 2,626 sf	<b>Details</b>	Main floor open concept space ideal for office or retail use
<b>Price</b>	\$15.00 psf Semi-Gross	<b>Agent(s)</b>	Donna Green



## 182-184-190 HALIFAX STREET, MONCTON

<b>Size</b>	+/- 3,555 sf	<b>Details</b>	Various size units of office and warehouse space for lease
<b>Price</b>	Please Contact	<b>Agent(s)</b>	Ian Franklin   Donna Green   Sandra Paquet



## 1 ORANGE LANE, MONCTON

<b>Size</b>	+/- 3,000 sf	<b>Details</b>	Main floor space ideal for office professional, entertainment, retail, etc
<b>Price</b>	\$18.00 psf Semi-Gross	<b>Agent(s)</b>	Donna Green



## 406 COVERDALE ROAD, RIVERVIEW

<b>Size</b>	+/-1,400 sf	<b>Details</b>	Renovated corner lot office/commercial space in high traffic area
		<b>Agent(s)</b>	Ian Franklin   Sandra Paquet

# OFFICE SPACE FOR LEASE

CLICK ON THE PHOTO TO OBTAIN MORE INFORMATION ONLINE



## 33 PINE GLEN ROAD, RIVERVIEW

<b>Size</b>	1,900 sf + basement	<b>Details</b>	New modern design with multi-tenant potential
<b>Price</b>	\$12.00 psf Net	<b>Agent(s)</b>	Ian Franklin   Sandra Paquet



## 50 DRISCOLL CRESCENT, MONCTON

<b>Size</b>	593 and 310 sf	<b>Details</b>	Nicely finished 2nd floor office suites (Contiguous space)
<b>Price</b>	\$ 9.00 psf Net	<b>Agent(s)</b>	Donna Green



## 330-350 ELMWOOD DRIVE, MONCTON

<b>Size</b>	+/- 4,508 sf	<b>Details</b>	High end Class "A" office or retail space in a prime location
<b>Price</b>	\$19.95 psf Net	<b>Agent(s)</b>	Donna Green



## 1180 ST. GEORGE BOULEVARD, MONCTON

<b>Size</b>	1,228 and 4,126 sf	<b>Details</b>	2nd Floor office suites with natural light; contiguous space
<b>Price</b>	\$7.00 psf Net	<b>Agent(s)</b>	Ian Franklin   Donna Green   Adam MaGee   Sandra Paquet



## 413 MAIN STREET, MONCTON

<b>Size</b>	Up to 6,000 sf	<b>Details</b>	Under redevelopment, 3 storey mixed-use Office/Commercial
<b>Price</b>	\$18-28 psf Semi-Gross	<b>Agent(s)</b>	Donna Green



## 220 ACADIE AVENUE, DIEPPE

<b>Size</b>	+/- 2,119 sf	<b>Details</b>	Modern 2 storey building in a high traffic area; ideal for multiple uses
<b>Price</b>	\$2,800/month Net	<b>Agent(s)</b>	Donna Green

# OFFICE SPACE FOR LEASE

CLICK ON THE PHOTO TO OBTAIN MORE INFORMATION ONLINE



## 814 MAIN STREET, MONCTON

<b>Size</b>	+/- 800 sf	<b>Details</b>	Professional three storey commercial building with great views
<b>Price</b>	\$ 25.00 psf Gross	<b>Agent(s)</b>	Donna Green



## 321 MAIN & 15 VESTIAIRE STREET, SHEDIAC

<b>Size</b>	+/- 1,280 sf	<b>Details</b>	Large open concept area, private offices and storage ; retail or office
<b>Price</b>	\$17.00 psf Net	<b>Agent(s)</b>	Donna Green



## BROWN HOLDER BUILDING, 264 BOTSFORD STREET, MONCTON

<b>Size</b>	+/- 2,006 sf	<b>Details</b>	Signature multi-tenant office and retail complex with on-site parking
<b>Price</b>	Please Contact	<b>Agent(s)</b>	Ian Franklin   Sandra Paquet



## 128 HIGHFIELD STREET, MONCTON

<b>Size</b>	+/- 2,254 sf	<b>Details</b>	Office space with lots of natural light; private offices and open concept
<b>Price</b>	\$9.00 psf Net	<b>Agent(s)</b>	Donna Green



## 232-236 ST. GEORGE STREET, MONCTON

<b>Size</b>	Up to 11,113 sf	<b>Details</b>	Various suites, 5 storey multi-tenant office building close to downtown
<b>Price</b>	\$15.00 psf Gross	<b>Agent(s)</b>	Donna Green



## 585 MAPLETON ROAD, MONCTON

<b>Size</b>	Main and Lower Level	<b>Details</b>	Ideal for retail, professional office, fitness, or other potential uses
<b>Price</b>	Please Contact	<b>Agent(s)</b>	Donna Green

# OFFICE SPACE FOR LEASE

CLICK ON THE PHOTO TO OBTAIN MORE INFORMATION ONLINE



## 115 HARRISVILLE BOULEVARD, MONCTON

<b>Size</b>	+/- 2,500 to 7,500 sf	<b>Details</b>	Nicely finished office with warehouse and dock loading doors
<b>Price</b>	\$ 7.95 psf Net	<b>Agent(s)</b>	Ian Franklin   Sandra Paquet



## 1070 ST. GEORGE BOULEVARD, MONCTON

<b>Size</b>	+/- 1,155 sf	<b>Details</b>	Open concept space with 2 private offices and impressive natural light
<b>Price</b>	\$12.00 psf Gross	<b>Agent(s)</b>	Donna Green



## 281 ST. GEORGE STREET, MONCTON

<b>Size</b>	+/- 1,600 sf	<b>Details</b>	Newly renovated back unit for lease with plenty of parking space
<b>Price</b>	\$10.00 psf Net	<b>Agent(s)</b>	Ian Franklin   Sandra Paquet



## 61-65 PACIFIC, MONCTON

<b>Size</b>	+/- 1,100 sf	<b>Details</b>	Ample on-site parking, ideal for service commercial, retail and office
<b>Price</b>	Please Contact	<b>Agent(s)</b>	Ian Franklin   Sandra Paquet

# INDUSTRIAL SPACE FOR LEASE

CLICK ON THE PHOTO TO OBTAIN MORE INFORMATION ONLINE



## 227 HENRI DUNANT STREET, MONCTON

<b>Size</b>	+/- 6,000 sf	<b>Details</b>	Prime industrial space with +/- 26' ceilings and office space
<b>Price</b>	\$6.75 psf Net	<b>Agent(s)</b>	Adam MaGee



## 683 MALENFANT BOULEVARD, DIEPPE

<b>Size</b>	+/- 3,900 sf	<b>Details</b>	Open warehouse and office space including board and staff room
<b>Price</b>	\$6.95 psf Net	<b>Agent(s)</b>	Adam MaGee



## 189 COLLISHAW STREET, MONCTON

<b>Size</b>	+/- 2,925 sf	<b>Details</b>	Single storey industrial building with office and warehouse space
<b>Price</b>	\$12.00 psf Gross	<b>Agent(s)</b>	Adam MaGee



## 725 CHAMPLAIN STREET, DIEPPE

<b>Size</b>	+/- 1,300 to 7,100 sf	<b>Details</b>	Office and warehouse space with dock and grade level loading
<b>Price</b>	\$6.95 psf Net	<b>Agent(s)</b>	Adam MaGee



## 115 HARRISVILLE BOULEVARD, MONCTON

<b>Size</b>	+/- 2,500 to 7,500 sf	<b>Details</b>	Nicely finished office with warehouse and dock loading doors
<b>Price</b>	\$ 7.95 psf Net	<b>Agent(s)</b>	Ian Franklin   Sandra Paquet



## 182-184-190 HALIFAX STREET, MONCTON

<b>Size</b>	From 661 sf to 3,555 sf	<b>Details</b>	Various size units of office and warehouse space for lease
<b>Price</b>	Please Contact	<b>Agent(s)</b>	Ian Franklin   Donna Green   Sandra Paquet

# INDUSTRIAL SPACE FOR LEASE

CLICK ON THE PHOTO TO OBTAIN MORE INFORMATION ONLINE



## 145 ENGLISH DRIVE, MONCTON

<b>Size</b>	+/- 14,400 sf	<b>Details</b>	Unique Multi-tenant Industrial property in the Moncton Industrial Park
<b>Price</b>	\$5.75 psf Net	<b>Agent(s)</b>	Adam MaGee



## 80 DRISCOLL CRESCENT, MONCTON

<b>Size</b>	+/- 12,009 sf	<b>Details</b>	Warehouse space with +/- 1,500 of office. Dock & grade loading
<b>Price</b>	\$8.75 psf Gross	<b>Agent(s)</b>	Donna Green



## 653 BABIN STREET, DIEPPE

<b>Size</b>	+/- 2,160 to 2,200 sf	<b>Details</b>	Office and warehouse with highway visibility
<b>Price</b>	\$7.50 - \$9.00 psf Net	<b>Agent(s)</b>	Ian Franklin   Sandra Paquet



## 1180 ST. GEORGE BOULEVARD, MONCTON

<b>Size</b>	+/- 7,399 sf	<b>Details</b>	Warehouse space with 3 dock level doors close to the highway
<b>Price</b>	\$5.75 psf Net	<b>Agent(s)</b>	Ian Franklin   Donna Green   Adam MaGee   Sandra Paquet



## 190 ALISON BOULEVARD, FREDERICTON

<b>Size</b>	+/- 9,688 sf	<b>Details</b>	Showroom, and office area plus warehouse space for Sub-Lease
<b>Price</b>	\$7.95 psf Net	<b>Agent(s)</b>	Ian Franklin   Sandra Paquet



# COMMERCIAL/RETAIL SPACE FOR LEASE

CLICK ON THE PHOTO TO OBTAIN MORE INFORMATION ONLINE



## 363 MOUNTAIN ROAD, MONCTON

<b>Size</b>	+/- 3,465 sf	<b>Details</b>	Large two storey single tenant building on a corner lot
<b>Price</b>	Please Contact	<b>Agent(s)</b>	Ian Franklin   Sandra Paquet



## 201 AMIRAULT STREET, DIEPPE

<b>Size</b>	+/- 2,800 sf	<b>Details</b>	Commercial building with offices, retail showroom, storage/garage
<b>Price</b>	\$12.50 psf Net	<b>Agent(s)</b>	Donna Green



## THE JUNCTION – URBAN VILLAGE, TANNERY PLACE SOUTH, MONCTON

<b>Size</b>	+/- 800 to 13,372 sf	<b>Details</b>	Up to 7 retail, restaurants & professional services
<b>Price</b>	Please Contact	<b>Agent(s)</b>	Ian Franklin   Sandra Paquet



## 121 PINE GLEN ROAD, RIVERVIEW

<b>Size</b>	+/- 950 to 2,268 sf	<b>Details</b>	Various size space available for office or retail
<b>Price</b>	Please Contact	<b>Agent(s)</b>	Ian Franklin   Sandra Paquet



## 360 PLEASANT STREET, MIRAMICHI

<b>Size</b>	+/- 1,495 sf	<b>Details</b>	Open space ready for office or retail on ground floor
<b>Price</b>	\$17.00 psf Net	<b>Agent(s)</b>	Ian Franklin   Sandra Paquet



## 1 ORANGE LANE, MONCTON

<b>Size</b>	+/- 3,000 sf	<b>Details</b>	Main floor space ideal for office professional, entertainment, retail, etc.
<b>Price</b>	\$18.00 psf Semi-Gross	<b>Agent(s)</b>	Donna Green

# COMMERCIAL/RETAIL SPACE FOR LEASE

CLICK ON THE PHOTO TO OBTAIN MORE INFORMATION ONLINE



## WHEELER PARK POWER CENTRE, MONCTON

<b>Size</b>	Prime Retail Space	<b>Details</b>	Destination retail complex with high cross traffic and visibility
<b>Price</b>	\$22.00 psf Net	<b>Agent(s)</b>	Ian Franklin   Donna Green   Sandra Paquet



## 61-65 PACIFIC, MONCTON

<b>Size</b>	+/- 1,100 to 1,260 sf	<b>Details</b>	Ample on-site parking, ideal for service commercial, retail and office
<b>Price</b>	Please Contact	<b>Agent(s)</b>	Ian Franklin   Sandra Paquet



## 1850 MAIN STREET, MONCTON

<b>Size</b>	+/- 4,970 sf	<b>Details</b>	Newly renovated 2 storey commercial building in high traffic area
<b>Price</b>	Please Contact	<b>Agent(s)</b>	Ian Franklin   Sandra Paquet



## 630 PINEWOOD ROAD, RIVERVIEW

<b>Size</b>	+/- 800 sf	<b>Details</b>	Open concept space including a reception area in a busy retail plaza
<b>Price</b>	\$ 10.00 psf Net	<b>Agent(s)</b>	Donna Green



## 70 WATERLOO STREET, MONCTON

<b>Size</b>	+/- 1,000 sf	<b>Details</b>	Prime ground floor retail space in a mixed use multi-tenant building
<b>Price</b>	\$ 1,750/month Gross	<b>Agent(s)</b>	Donna Green



## 206 PINE GLEN ROAD, RIVERVIEW

<b>Size</b>	+/- 2,626 sf	<b>Details</b>	Main floor open concept space ideal for office or retail use
<b>Price</b>	\$15.00 psf Semi-Gross	<b>Agent(s)</b>	Donna Green

# COMMERCIAL/RETAIL SPACE FOR LEASE

CLICK ON THE PHOTO TO OBTAIN MORE INFORMATION ONLINE



## 330-350 ELMWOOD DRIVE, MONCTON

<b>Size</b>	+/- 4,508 sf	<b>Details</b>	High end Class "A" office or retail space in a prime location
<b>Price</b>	\$19.95 psf Net	<b>Agent(s)</b>	Donna Green



## 413 MAIN STREET, MONCTON

<b>Size</b>	Up to 6,000 sf	<b>Details</b>	Under redevelopment, 3 storey mixed-use Office/Commercial
<b>Price</b>	\$18-28 psf Semi-Gross	<b>Agent(s)</b>	Donna Green



## 220 ACADIE AVENUE, DIEPPE

<b>Size</b>	+/- 2,119 sf	<b>Details</b>	Modern 2 storey building in a high traffic area; ideal for multiple uses
<b>Price</b>	\$2,800/month Net	<b>Agent(s)</b>	Donna Green



## 585 MAPLETON ROAD, MONCTON

<b>Size</b>	Main and Lower Level	<b>Details</b>	Ideal for retail, professional office, fitness, or other potential uses
<b>Price</b>	Please Contact	<b>Agent(s)</b>	Donna Green

# FOR SALE

PROPERTIES FOR SALE

---

LAND FOR SALE

---



# COMMERCIAL/OFFICE/RETAIL FOR SALE

CLICK ON THE PHOTO TO OBTAIN MORE INFORMATION ONLINE



## 1355 MAIN STREET, MONCTON

<b>Size</b>	+/- 4,400 sf	<b>Details</b>	Exceptional commercial space in a one level single occupier building
<b>Price</b>	\$550,000	<b>Agent(s)</b>	Ian Franklin   Sandra Paquet



## 1666 MAIN STREET, MONCTON

<b>Size</b>	+/- 1,400 sf	<b>Details</b>	Recently renovated office space with potential for multi-tenant
<b>Price</b>	\$279,000	<b>Agent(s)</b>	Ian Franklin   Sandra Paquet



## 201 AMIRAULT STREET, DIEPPE

<b>Size</b>	+/- 2,800 sf	<b>Details</b>	Commercial building with offices, retail showroom, storage/garage
<b>Price</b>	\$389,000	<b>Agent(s)</b>	Donna Green



## 33 PINE GLEN ROAD, RIVERVIEW

<b>Size</b>	1,900 sf + basement	<b>Details</b>	New modern design with multi-tenant potential for office space
<b>Price</b>	\$349,500	<b>Agent(s)</b>	Ian Franklin   Sandra Paquet



## 11 EAST MAIN STREET, PORT ELGIN

<b>Size</b>	+/- 2,100 sf	<b>Details</b>	Stand alone retail or office building with waterfront views
<b>Price</b>	\$95,000	<b>Agent(s)</b>	Adam MaGee



## 125 DOMINION STREET, MONCTON

<b>Size</b>	+/- 2,700 sf	<b>Details</b>	Single-tenant property usable for many uses in a busy neighborhood
<b>Price</b>	\$195,000	<b>Agent(s)</b>	Adam MaGee

# COMMERCIAL/OFFICE/RETAIL FOR SALE

CLICK ON THE PHOTO TO OBTAIN MORE INFORMATION ONLINE



## 1850 MAIN STREET, MONCTON

<b>Size</b>	+/- 4,970 sf	<b>Details</b>	Newly renovated 2 storey commercial building in high traffic area
<b>Price</b>	\$860,000	<b>Agent(s)</b>	Ian Franklin   Sandra Paquet



## 178 HALIFAX STREET, MONCTON

<b>Size</b>	+/- 7,840 sf	<b>Details</b>	Ideal for service commercial or retail with renovated office space
<b>Price</b>	\$525,000	<b>Agent(s)</b>	Donna Green

# INVESTMENT PROPERTIES FOR SALE

CLICK ON THE PHOTO TO OBTAIN MORE INFORMATION ONLINE



## 2842 MAIN STREET, HILLSBOROUGH

<b>Size</b>	+/- 18,418 sf	<b>Details</b>	Land and investment property in Hillsborough with 2.89 Acres of land
<b>Price</b>	\$549,000	<b>Agent(s)</b>	Ian Franklin   Sandra Paquet



## 61-65 PACIFIC, MONCTON

<b>Size</b>	+/- 7,281 sf	<b>Details</b>	Investment property near Downtown Moncton
<b>Price</b>	\$395,000	<b>Agent(s)</b>	Ian Franklin   Sandra Paquet



## 321 MAIN & 15 VESTIAIRE STREET, SHEDIAC

<b>Size</b>	+/- 6,000 sf	<b>Details</b>	Four-unit multi-tenant retail strip on +/-31,000 sf of land
<b>Price</b>	\$995,000	<b>Agent(s)</b>	Donna Green

# INDUSTRIAL PROPERTIES FOR SALE

CLICK ON THE PHOTO TO OBTAIN MORE INFORMATION ONLINE



## 2222 ROUTE 134, LAKEVILLE

<b>Size</b>	+/- 18,726 sf	<b>Details</b>	Multi-use building on 4.7 acres of land
<b>Price</b>	\$560,000	<b>Agent(s)</b>	Adam MaGee



## 182-190 HALIFAX STREET, MONCTON

<b>Size</b>	+/- 9,668 sf	<b>Details</b>	Multi-building property with a mix of office and warehouse space
<b>Price</b>	\$499,000	<b>Agent(s)</b>	Ian Franklin   Donna Green   Sandra Paquet



## 481 EDINBURGH DRIVE, MONCTON

<b>Size</b>	+/- 12,587 sf	<b>Details</b>	Property features a mix of showroom, offices and warehouse
<b>Price</b>	\$949,000	<b>Agent(s)</b>	Ian Franklin   Sandra Paquet



# LAND FOR SALE

CLICK ON THE PHOTO TO OBTAIN MORE INFORMATION ONLINE



## PRINCIPALE STREET AND de L'ANSE STREET LAND, TRACADIE

<b>Size</b>	+/- 1.15 Acres	<b>Details</b>	Waterfront development lot with diverse development opportunities
<b>Price</b>	\$275,000	<b>Agent(s)</b>	Raoul Robichaud



## BERRY MILLS DEVELOPMENT LAND, BERRY MILLS

<b>Size</b>	+/- 99 Acres	<b>Details</b>	Development land in Berry Mills with Trans-Canada Exposure
<b>Price</b>	\$2,500,000	<b>Agent(s)</b>	Ian Franklin   Sandra Paquet



## BOTSFORD STREET, VICTORIA STREET AND WESLEY STREET, MONCTON

<b>Size</b>	+/- 37,707 sf	<b>Details</b>	High profile site near city hall in Downtown Moncton
<b>Price</b>	\$2,400,000	<b>Agent(s)</b>	Ian Franklin   Sandra Paquet



## NORTHWOOD ROAD , MONCTON

<b>Size</b>	+/- 7.80 Acres	<b>Details</b>	Prime development land with great Trans-Canada Highway frontage
<b>Price</b>	\$1,499,000	<b>Agent(s)</b>	Ian Franklin   Sandra Paquet



## 110 NORTHWOOD ROAD, MONCTON

<b>Size</b>	+/- 18.29 Acres	<b>Details</b>	Prime development land along Trans-Canada Highway. Zoned RR-1
<b>Price</b>	\$1,200,000	<b>Agent(s)</b>	Ian Franklin   Sandra Paquet



## BENJAMIN STREET, DIEPPE

<b>Size</b>	+/- 5.3 Acres	<b>Details</b>	Prime development land with great Trans-Canada Highway frontage
<b>Price</b>	\$1,250,000	<b>Agent(s)</b>	Ian Franklin   Sandra Paquet

# LAND FOR SALE

CLICK ON THE PHOTO TO OBTAIN MORE INFORMATION ONLINE



## 1730 MAIN STREET, MONCTON

<b>Size</b>	+/- 15,000 sf	<b>Details</b>	High profile commercial land in the heart of downtown
<b>Price</b>	\$149,000	<b>Agent(s)</b>	Donna Green



## RECREATIONAL LAND FOR SALE, CAPE TORMENTINE

<b>Size</b>	+/- 3.23 Acres	<b>Details</b>	Prime recreational land, adjacent to the NB Trail Network
<b>Price</b>	\$19,500	<b>Agent(s)</b>	Adam MaGee



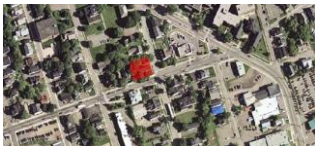
## 230 COVERDALE ROAD, RIVERVIEW

<b>Size</b>	+/- 2.32 Acres	<b>Details</b>	Development land on busy Coverdale Road Zoned SC
<b>Price</b>	\$535,000	<b>Agent(s)</b>	Ian Franklin   Sandra Paquet



## 1213 MAIN STREET, ALDOUANE

<b>Size</b>	+/- 1.48 Acres	<b>Details</b>	Prime land in Aldouane with good access to nearby Richibucto
<b>Price</b>	Please Contact	<b>Agent(s)</b>	Adam MaGee



## STEADMAN STREET, MONCTON

<b>Size</b>	+/- 7,100 sf	<b>Details</b>	Development land on the corner of Steadman and St. George Street
<b>Price</b>	\$99,500	<b>Agent(s)</b>	Donna Green



## ST. GEORGE BOULEVARD AND WHEELER BOULEVARD LAND, MONCTON

<b>Size</b>	+/- 12.55 Acres	<b>Details</b>	Prime development site made up of 2 parcels, Zoned IP
<b>Price</b>	\$349,900	<b>Agent(s)</b>	Ian Franklin   Sandra Paquet

# LAND FOR SALE

CLICK ON THE PHOTO TO OBTAIN MORE INFORMATION ONLINE



## HWY 134, BATHURST

<b>Size</b>	+/- 40,472 sf	<b>Details</b>	Prime development site on HWY 134 with 200' of frontage
<b>Price</b>	\$9,500	<b>Agent(s)</b>	Adam MaGee



## TEE TIME DRIVE, MONCTON

<b>Size</b>	+/- 35 Acres	<b>Details</b>	Development land near Mountain Road and Trans-Canada Highway
<b>Price</b>	\$1,900,000	<b>Agent(s)</b>	Ian Franklin   Sandra Paquet



## WHEELER BOULEVARD LAND, MONCTON

<b>Size</b>	+/- 17 Acres	<b>Details</b>	Prime development land on Wheeler Boulevard
<b>Price</b>	\$849,000	<b>Agent(s)</b>	Donna Green



## NB 134, ALDOUANE

<b>Size</b>	+/- 40,100 sf	<b>Details</b>	Prime land in Aldouane with good access to nearby Richibucto.
<b>Price</b>	\$7,500	<b>Agent(s)</b>	Adam MaGee



## DIEPPE BOULEVARD, DIEPPE

<b>Size</b>	+/- 1.84 acres	<b>Details</b>	Development site with +/- 273' of frontage on busy Dieppe Boulevard
<b>Price</b>	\$699,000	<b>Agent(s)</b>	Ian Franklin   Donna Green   Sandra Paquet



## IVAN RAND DRIVE, MONCTON

<b>Size</b>	+/- 17 Acres	<b>Details</b>	Prime development site near Downtown Event Centre, Zoned SC
<b>Price</b>	\$2,400,000	<b>Agent(s)</b>	Ian Franklin   Sandra Paquet





# SOLD & LEASED

A LIST OF PROPERTIES SOLD AND  
LEASED BY OUR BROKERAGE TEAM IN  
THE LAST 60 DAYS.

---



# SOLD AND LEASED PROPERTIES



## 24 RIDEOUT STREET, MONCTON

<b>Size</b>	+/- 4,000 sf	<b>Details</b>	Renovated building with +/- 80% office space on a +/- 1.03 acre lot
		<b>Agent(s)</b>	Ian Franklin   Sandra Paquet



## 38 OLD BERRY MILLS ROAD, BERRY MILLS

<b>Size</b>	+/- 20,000 sf	<b>Details</b>	Ideal for construction, lumber/farm supply, bulk storage and more
		<b>Agent(s)</b>	Ian Franklin   Sandra Paquet



## 184 SPRUCE STREET, MONCTON

<b>Size</b>	+/- 9,900 sf	<b>Details</b>	12-unit walk-up apartment building with two- and one-bedroom units
		<b>Agent(s)</b>	Ian Franklin   Sandra Paquet



## 190 JOHN STREET, MONCTON

<b>Size</b>	+/- 4,800 sf	<b>Details</b>	Single-tenant service commercial building near Downtown Moncton
		<b>Agent(s)</b>	Adam MaGee



## BROWN HOLDER BUILDING, 264 BOTSFORD STREET, MONCTON

<b>Size</b>	+/- 13,536 sf	<b>Details</b>	Signature multi-tenant office and retail complex with on-site parking
		<b>Agent(s)</b>	Ian Franklin   Sandra Paquet   Donna Green



## 599 MAIN STREET, MONCTON

<b>Size</b>	1,350 & 1,000 sf	<b>Details</b>	Appealing 2 <sup>nd</sup> floor space in downtown Moncton
		<b>Agent(s)</b>	Donna Green

# SOLD AND LEASED PROPERTIES



## 722 ACADIE AVENUE, DIEPPE

<b>Size</b>	+/- 2,200 sf	<b>Details</b>	2 <sup>nd</sup> floor modern office space with wood floors and natural light
		<b>Agent(s)</b>	Donna Green



## 16 CHURCH STREET, MONCTON

<b>Size</b>	+/- 3,000 sf	<b>Details</b>	Stylish open concept office space with private offices and natural light
		<b>Agent(s)</b>	Donna Green



**Sandra Paquet**  
Commercial Sales & Leasing  
506 387 6920 Direct  
506 878 1406 Mobile  
506 387 6929 Fax  
[spaquet@cwatlantic.com](mailto:spaquet@cwatlantic.com)



**Donna Green**  
Commercial Sales & Leasing  
506 387 6930 Direct  
506 866 1319 Mobile  
506 387 6929 Fax  
[dgreen@cwatlantic.com](mailto:dgreen@cwatlantic.com)



**Adam MaGee**  
Commercial Sales & Leasing  
506 387 6928 Direct  
506 872 2507 Mobile  
506 387 6929 Fax  
[amagee@cwatlantic.com](mailto:amagee@cwatlantic.com)



**Ian Franklin, CCIM**  
Vice President  
506 863 7199 Mobile  
506 387 6929 Fax  
[ifranklin@cwatlantic.com](mailto:ifranklin@cwatlantic.com)



**Bill MacAvoy**  
Managing Director  
902 425 1872 Office  
902 880 0445 Mobile  
902 425 7374 Fax  
[bmacavoy@cwatlantic.com](mailto:bmacavoy@cwatlantic.com)



**Raoul Robichaud**  
Commercial Real Estate Advisor  
506 862 8380 Mobile  
902 425 7374 Fax  
[rrobichaud@cwatlantic.com](mailto:rrobichaud@cwatlantic.com)

[cwatlantic.com](http://cwatlantic.com)