

MONTHLY LISTINGS REPORT

Greater Moncton & Surrounding Areas
New Brunswick | December 2019

FOR LEASE

OFFICE SPACE FOR LEASE

INDUSTRIAL SPACE FOR LEASE

COMMERCIAL/RETAIL SPACE FOR LEASE



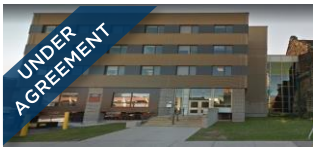
OFFICE SPACE FOR LEASE

CLICK ON THE PHOTO TO OBTAIN MORE INFORMATION ONLINE



607 ST. GEORGE BOULEVARD, MONCTON

Size	+/- 1,667 sf	Details	Office space on a busy street with great visibility
Price	\$16.00 psf Gross	Agent(s)	Donna Green



22 CHURCH STREET – COMMUNITY PEACE CENTRE , MONCTON

Size	+/- 441 to 10,635 sf	Details	Multi-tenant office building in the heart of downtown Moncton
Price	Please Contact	Agent(s)	Ian Franklin



55 DRISCOLL CRESCENT, MONCTON

Size	+/- 3,400 sf	Details	Office space featuring 11 private offices with lots of natural light
Price	\$10.50 psf Net	Agent(s)	Ian Franklin



210 JOHN STREET, MONCTON

Size	+/- 1,894 to 3,986 sf	Details	Main floor office space units which can be combined to create 3,986 sf
Price	\$14.00 psf Net	Agent(s)	Ian Franklin



343 ST. GEORGE STREET, MONCTON

Size	1,400 & 3,500 sf	Details	2 nd storey office units available. Open concept, industrial style office space
Price	\$13 - \$17 Semi-Gross	Agent(s)	Adam MaGee



1 ORANGE LANE, MONCTON

Size	+/- 2,850 sf	Details	Main floor space ideal for office professional, entertainment, retail, etc.
Price	\$18.00 psf Semi-Gross	Agent(s)	Donna Green

OFFICE SPACE FOR LEASE

CLICK ON THE PHOTO TO OBTAIN MORE INFORMATION ONLINE



1180 ST. GEORGE BOULEVARD, MONCTON

Size	+/- 4,126 sf	Details	2 nd floor office suite with natural light and open concept layout
Price	\$7.00 psf Net	Agent(s)	Adam MaGee Donna Green



206 PINE GLEN ROAD, RIVERVIEW

Size	+/- 1,313 sf	Details	Main floor open concept ideal for office or retail use (can be demised)
Price	\$15.00 psf Semi-Gross	Agent(s)	Adam MaGee Donna Green



232-236 ST. GEORGE STREET, MONCTON

Size	Up to 5,220 sf	Details	Various suites, 5-storey multi-tenant office building close to downtown
Price	\$16.00 psf Gross	Agent(s)	Donna Green



182-184-190 HALIFAX STREET, MONCTON

Size	+/- 3,555 sf	Details	Various size units of office and warehouse space for lease
Price	Please Contact	Agent(s)	Ian Franklin Adam MaGee



413 MAIN STREET, MONCTON

Size	Up to 6,000 sf	Details	Under redevelopment, 3-storey mixed-use office/commercial space
Price	\$18-28 psf Semi-Gross	Agent(s)	Donna Green



814 MAIN STREET, MONCTON

Size	+/- 800 sf	Details	2 nd floor office space for small business in the heart of downtown
Price	\$25.00 psf Gross	Agent(s)	Donna Green

OFFICE SPACE FOR LEASE

CLICK ON THE PHOTO TO OBTAIN MORE INFORMATION ONLINE



860 MAIN STREET, MONCTON

Size	+/- 4,000 sf	Details	Downtown office space with great views and ample natural light
Price	\$13.00 psf Net	Agent(s)	Donna Green



722 ACADIE AVENUE, DIEPPE

Size	+/- 4,400 sf	Details	First class office or retail space in a bustling area of Dieppe
Price	\$7.00 - \$15.00 psf Net	Agent(s)	Ian Franklin Donna Green



12 CORONATION DRIVE, MONCTON

Size	+/- 1,000 sf	Details	Single tenant commercial building off busy West Main Street
Price	\$1,200/month Gross	Agent(s)	Donna Green



844 MAIN STREET, MONCTON

Size	+/- 2,920 sf	Details	Modern, downtown ground floor space with exposed brick and natural light
Price	\$28.00 psf Gross	Agent(s)	Donna Green

INDUSTRIAL SPACE FOR LEASE

CLICK ON THE PHOTO TO OBTAIN MORE INFORMATION ONLINE



725 CHAMPLAIN STREET, DIEPPE

Size	+/- 1,300 to 4,000 sf	Details	Office and warehouse space with dock and grade level loading
Price	\$8 psf Net	Agent(s)	Adam MaGee



227 HENRI DUNANT STREET, MONCTON

Size	+/- 6,000 sf	Details	Prime industrial space with +/- 26' ceilings and office space
Price	\$6.75 psf Net	Agent(s)	Adam MaGee



190 ALISON BOULEVARD, FREDERICTON

Size	+/- 9,688 sf	Details	Showroom, and office area plus warehouse space for sub-lease
Price	\$7.95 psf Net	Agent(s)	Ian Franklin Adam MaGee



182-184-190 HALIFAX STREET, MONCTON

Size	+/- 782 to 3,555 sf	Details	Various size units of office and warehouse space for lease
Price	Please Contact	Agent(s)	Ian Franklin Adam MaGee



415 ELMWOOD STREET, MONCTON

Size	+/- 8,002 to 10,127 sf	Details	Prime retail space ideal for a retail store, restaurant or entertainment
Price	Please Contact	Agent(s)	Bill MacAvoy

COMMERCIAL/RETAIL SPACE FOR LEASE

CLICK ON THE PHOTO TO OBTAIN MORE INFORMATION ONLINE



616 CHAMPLAIN STREET, DIEPPE

Size	+/- 4,320 to 8,640 sf	Details	4,320 sf per floor; 2 grade doors, impressive showroom
Price	Please Contact	Agent(s)	Ian Franklin Adam MaGee



363 MOUNTAIN ROAD, MONCTON

Size	+/- 3,465 sf	Details	Large 2-storey single tenant building on a corner lot
Price	Please Contact	Agent(s)	Ian Franklin



1666 MAIN STREET, MONCTON

Size	+/- 1,400 sf	Details	Recently renovated office space with potential for multi-tenant
Price	\$1,675/month Net	Agent(s)	Ian Franklin Adam MaGee



THE JUNCTION – URBAN VILLAGE, TANNERY PLACE SOUTH, MONCTON

[WATCH VIDEO](#)

Size	+/- 800 to 13,920 sf	Details	Up to 6 retail, restaurants & professional services units for lease
Price	Please Contact	Agent(s)	Ian Franklin



121 PINE GLEN, RIVERVIEW

Size	+/- 1,365 sf	Details	Great retail/office space in a high traffic location in Riverview
Price	\$12.00 psf Net	Agent(s)	Ian Franklin



722 ACADIE AVENUE, DIEPPE

Size	+/- 4,400 sf	Details	First class office or retail space in a bustling area of Dieppe
Price	\$7.00 - \$15.00 psf Net	Agent(s)	Ian Franklin Donna Green

COMMERCIAL/RETAIL SPACE FOR LEASE

CLICK ON THE PHOTO TO OBTAIN MORE INFORMATION ONLINE



540 PINWOOD ROAD, RIVERVIEW

Size	+/- 1,560 to 6,909 sf	Details	Class A retail space in the heart of Riverview's retail development area
Price	\$14.00 psf Net	Agent(s)	Adam MaGee



413 MAIN STREET, MONCTON

Size	Up to 6,000 sf	Details	Under redevelopment, 3-storey mixed-use office/commercial space
Price	\$18-28 psf Semi-Gross	Agent(s)	Donna Green



1 ORANGE LANE, MONCTON

Size	+/- 2,850 sf	Details	Main floor space ideal for office professional, entertainment, retail, etc.
Price	\$18.00 psf Semi-Gross	Agent(s)	Donna Green



844 MAIN STREET, MONCTON

Size	+/- 2,920 sf	Details	Prominent downtown commercial space with a 50' dedicated storefront
Price	\$28.00 psf Gross	Agent(s)	Donna Green

FOR SALE

COMMERCIAL/OFFICE/RETAIL FOR SALE

INVESTMENT PROPERTIES FOR SALE

INDUSTRIAL PROPERTIES FOR SALE

LAND FOR SALE



COMMERCIAL/OFFICE/RETAIL FOR SALE

CLICK ON THE PHOTO TO OBTAIN MORE INFORMATION ONLINE



616 CHAMPLAIN STREET, DIEPPE

Size	+/- 8,640 sf	Details	2-storey commercial building; 2 grade doors, impressive showroom
Price	\$860,000	Agent(s)	Ian Franklin Adam Magee



125 DOMINION STREET, MONCTON

Size	+/- 2,700 sf	Details	Single-tenant property usable for many uses in a busy neighborhood
Price	\$159,000	Agent(s)	Adam MaGee



178 HALIFAX STREET, MONCTON

Size	+/- 7,840 sf	Details	Ideal for service commercial or retail with renovated office space
Price	\$525,000	Agent(s)	Donna Green



1666 MAIN STREET, MONCTON

Size	+/- 1,400 sf	Details	Recently renovated office space with potential for multi-tenant
Price	\$249,000	Agent(s)	Ian Franklin Adam MaGee



60, CHEMIN DE LA TRAVERSE, SAINT PAUL

Size	+/- 5,000 sf	Details	Open concept space suitable for a multitude of uses
Price	\$199,000	Agent(s)	Adam MaGee



760 CHAMPLAIN STREET, DIEPPE

Size	+/- 5,000 sf	Details	Recently renovated restaurant with kitchen in high profile location
Price	\$989,000	Agent(s)	Ian Franklin

COMMERCIAL/OFFICE/RETAIL FOR SALE

CLICK ON THE PHOTO TO OBTAIN MORE INFORMATION ONLINE



77 ROONEY CRESCENT, MONCTON			
Size	+/- 7,122 sf	Details	Ideal office building with ample parking in Moncton Industrial Park
Price	\$855,000	Agent(s)	Adam MaGee

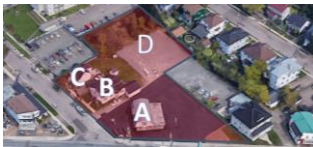
INVESTMENT PROPERTIES FOR SALE

CLICK ON THE PHOTO TO OBTAIN MORE INFORMATION ONLINE



2842 MAIN STREET, HILLSBOROUGH

Size	+/- 18,418 sf	Details	Land and investment property in Hillsborough with 1.89 acres of land
Price	\$549,000	Agent(s)	Ian Franklin



491 MOUNTAIN ROAD, MONCTON

Size	+/- 40,000 sf	Details	3 income-generating buildings and additional land for development
Price	\$749,000	Agent(s)	Ian Franklin

INDUSTRIAL PROPERTIES FOR SALE

CLICK ON THE PHOTO TO OBTAIN MORE INFORMATION ONLINE



2222 ROUTE 134, LAKEVILLE

Size	+/- 18,726 sf	Details	Multi-use building on 4.7 acres of land
Price	\$560,000	Agent(s)	Adam MaGee



182-190 HALIFAX STREET, MONCTON

Size	+/- 9,668 sf	Details	Multi-building property with a mix of office and warehouse space
Price	\$499,000	Agent(s)	Ian Franklin Adam MaGee



42 RUE INDUSTRIELLE, BOUCTOUCHE

Size	+/- 102,860 sf	Details	Weigh station & warehouse building on large paved lot (2.36 acres)
Price	\$349,000	Agent(s)	Ian Franklin Adam MaGee

INCOME/RESIDENTIAL PROPERTIES FOR SALE

CLICK ON THE PHOTO TO OBTAIN MORE INFORMATION ONLINE



313 MOUNTAIN ROAD & 9 BROMLEY AVENUE, MONCTON

Size	+/- 14,750 sf	Details	2 buildings and large corner lot with potential for redevelopment
Price	\$325,000	Agent(s)	Ian Franklin



75 KING STREET, SACKVILLE

Size	25-Unit Apt.	Details	2-storey 25-unit apartment building close to Mount Allison University
Price	\$1,449,500	Agent(s)	Ian Franklin Raoul Robichaud



63 ELM STREET, MONCTON

Size	+/- 1,699 sf	Details	Fully rented up/down duplex sitting on a large +/- 6,405 sf lot downtown
Price	\$177,500	Agent(s)	Raoul Robichaud



70-72 FLEET STREET, MONCTON

Size	+/- 2,632 sf	Details	Fully rented side-by-side duplex located in downtown Moncton
Price	\$180,000	Agent(s)	Raoul Robichaud



73-75 ELM STREET & 76-78-80 FLEET STREET, MONCTON

Size	+/- 4,648 sf	Details	6 unit apartment building located in downtown Moncton
Price	\$350,000	Agent(s)	Raoul Robichaud



108 HIGHFIELD STREET, MONCTON

Size	+/- 3,616 sf	Details	6 unit apartment building located in downtown Moncton
Price	\$385,000	Agent(s)	Raoul Robichaud

LAND FOR SALE

CLICK ON THE PHOTO TO OBTAIN MORE INFORMATION ONLINE



313 MOUNTAIN ROAD & 9 BROMLEY AVENUE, MONCTON

Size	+/- 14,750 sf	Details	2 buildings and large corner lot with potential for redevelopment
Price	\$325,000	Agent(s)	Ian Franklin



STEADMAN STREET & ST. GEORGE STREET LAND, MONCTON

Size	+/- 7,100 sf	Details	High-traffic location with 90 ft of frontage on St. George Street
Price	\$99,500	Agent(s)	Donna Green



HIGHWAY 2 DEVELOPMENT LAND, SECOND NORTH RIVER/SALISBURY

Size	+/- 30 acres	Details	Located near the off/on Exit 433 ramp near the Trans-Canada Highway
Price	\$700,000	Agent(s)	Ian Franklin Adam MaGee



980 MOUNTAIN ROAD, MONCTON

Size	+/- 25,280 sf	Details	Rare development opportunity located on Mountain Road
Price	\$480,000	Agent(s)	Adam MaGee



700 PINEWOOD ROAD, RIVERVIEW

Size	+/- 25,220 sf	Details	Prime development land opportunity located on Pinewood Road
Price	\$155,000	Agent(s)	Adam MaGee



DIEPPE BOULEVARD DEVELOPMENT LAND, DIEPPE

Size	+/- 5.16 acres	Details	Corner lot off Dieppe Boulevard and Rufin Street with high visibility
Price	\$2,400,000	Agent(s)	Adam MaGee Donna Green

LAND FOR SALE

CLICK ON THE PHOTO TO OBTAIN MORE INFORMATION ONLINE



110 NORTHWOOD ROAD, MONCTON

Size	+/- 18.29 acres	Details	Prime development land along Trans-Canada Highway. Zoned RR-1
Price	\$1,200,000	Agent(s)	Ian Franklin



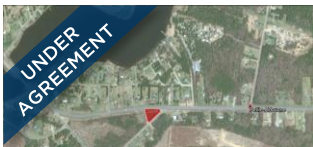
1730 MAIN STREET, MONCTON

Size	+/- 15,000 sf	Details	High profile commercial land in the heart of downtown
Price	\$149,000	Agent(s)	Raoul Robichaud



RECREATIONAL LAND FOR SALE, CAPE TORMENTINE

Size	+/- 3.23 acres	Details	Prime recreational land, adjacent to the NB Trail Network
Price	\$19,500	Agent(s)	Adam MaGee



1213 MAIN STREET, ALDOUANE

Size	+/- 1.48 acres	Details	Prime land in Aldouane with good access to nearby Richibucto
Price	Please Contact	Agent(s)	Adam MaGee



ST. GEORGE BOULEVARD AND WHEELER BOULEVARD LAND, MONCTON

Size	+/- 12.55 acres	Details	Prime development land with +/- 2,000' frontage on Wheeler Boulevard
Price	\$349,900	Agent(s)	Ian Franklin



NB 134, ALDOUANE

Size	+/- 40,100 sf	Details	Prime land in Aldouane with good access to nearby Richibucto
Price	\$7,500	Agent(s)	Adam MaGee

LAND FOR SALE

CLICK ON THE PHOTO TO OBTAIN MORE INFORMATION ONLINE



IVAN RAND DRIVE, MONCTON

Size	+/- 17 acres	Details	Prime development site near Downtown Event Centre. Zoned SC
Price	\$2,400,000	Agent(s)	Ian Franklin



HWY 134, BATHURST

Size	+/- 40,472 sf	Details	Prime development site on HWY 134 with 200' of frontage
Price	\$9,500	Agent(s)	Adam MaGee



BOTSFORD STREET, VICTORIA STREET AND WESLEY STREET, MONCTON

Size	+/- 37,707 sf	Details	High profile site near city hall in Downtown Moncton
Price	\$2,400,000	Agent(s)	Ian Franklin



BERRY MILLS DEVELOPMENT LAND, BERRY MILLS

Size	+/- 15.6 acres	Details	Development land in Berry Mills with Trans-Canada Highway exposure
Price	\$1,250,000	Agent(s)	Ian Franklin Adam MaGee



HIGHWAY DEVELOPMENT OPPORTUNITY, AMHERST, NOVA SCOTIA

Size	+/- 34 acres	Details	Development land with +/- 2,000 ft frontage on the Trans-Canada Highway
Price	\$549,000	Agent(s)	Adam MaGee



SILVERWOOD DEVELOPMENT LAND, FREDERICTON

Size	+/- 400 acres	Details	Rare opportunity for a large-scale development within Fredericton
Price	Please Contact	Agent(s)	Bill MacAvoy



SOLD & LEASED

A LIST OF PROPERTIES SOLD AND
LEASED BY OUR BROKERAGE TEAM IN
THE LAST 60 DAYS.

SOLD AND LEASED PROPERTIES



189 COLLISHAW STREET, MONCTON			
Size	+/- 2,925 sf	Details	Single-storey industrial building with office and warehouse spaces
		Agent(s)	Adam MaGee



Donna Green
Commercial Sales & Leasing
506 387 6930 Direct
506 866 1319 Mobile
dgreen@cwatlantic.com



Adam MaGee
Commercial Sales & Leasing
506 387 6928 Direct
506 872 2507 Mobile
amagee@cwatlantic.com



Peter Ryan
Commercial Real Estate Advisor **License Pending*
506 387 6920 Direct
506 872 0921 Mobile
pryan@cwatlantic.com



Ian Franklin, CCIM
Vice President
506 387 6920 Direct
506 863 7199 Mobile
ifranklin@cwatlantic.com



Bill MacAvoy
Managing Director
902 425 1872 Direct
902 880 0445 Mobile
bmacavoy@cwatlantic.com



Raoul Robichaud
Commercial Real Estate Advisor
506 862 8380 Mobile
902 425 7374 Fax
rrobichaud@cwatlantic.com

cwatlantic.com