

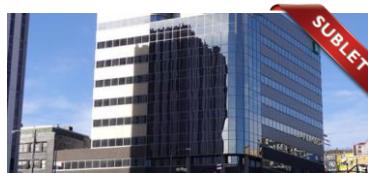
# C&WA MONTHLY LISTINGS REPORT

NEWFOUNDLAND & LABRADOR

DECEMBER 2014

# OFFICE SPACE FOR LEASE

Click on a property photo to obtain further information online



## NEW, 140 WATER STREET, ST. JOHN'S ICX® #: N/A

Size 1,670 & 1,684 sf Details Two 9<sup>th</sup> floor suites can be combined, parking on-site, anchored by TD Bank.

Price \$22.00 psf Net Agent(s) Susan Morrison | Joanne Earle



## NEW, 351 WATER STREET, ST. JOHN'S ICX® #: N/A

Size +/- 7,000 sf Details Brand new, prime downtown office space for sublet, maximum 5 year term.

Price \$34.50 psf Net Agent(s) Susan Morrison | Joanne Earle



## NEW, 38 DUFFY PLACE, ST. JOHN'S ICX® #: 1110614

Size 3,786 & 5,696 Details New quality construction, 1<sup>st</sup> and 2<sup>nd</sup> floor spaces available, on-site parking.

Price \$22.00 psf Net Agent(s) Susan Morrison | Joanne Earle



## NEW, 335 DUCKWORTH STREET, ST. JOHN'S ICX® #: N/A

Size 500 & 550 sf Details 2<sup>nd</sup> floor office spaces in prime downtown location, great for professionals.

Price \$750 per month Agent(s) Lloyd Nash



## 15 INTERNATIONAL PLACE, ST. JOHN'S ICX® #: N/A

Size Up to 18,587 sf Details Newly constructed office building, ample parking, convenient location

Price \$28.00 psf Net Agent(s) Susan Morrison | Joanne Earle | Lloyd Nash



## 294 FRESHWATER ROAD, ST. JOHN'S ICX® #: 1109373

Size 1,325 sf Details Great visibility, high traffic location, adjacent surface parking.

Price \$18.00 psf Net Agent(s) Susan Morrison | Joanne Earle | Lloyd Nash

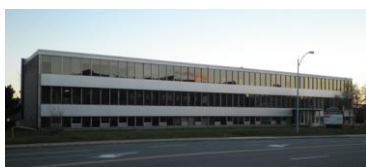
# OFFICE SPACE FOR LEASE

Click on a property photo to obtain further information online



## 430-434 WATER STREET, ST. JOHN'S ICX® #: N/A

Size	7,847 sf	Details	<b>SUBLET</b> , 2 <sup>nd</sup> floor, bright demiseable office space with on-site parking.
Price	\$15.00 Net	Agent(s)	<a href="#">Susan Morrison</a>   <a href="#">Joanne Earle</a>   <a href="#">Lloyd Nash</a>



## REDUCED PRICE, 49-55 ELIZABETH AVENUE, ST. JOHN'S ICX® #: I107573

Size	385 sf	Details	Modern finishes, signage opportunity, on-site parking, elevators.
Price	\$14.50 psf Net	Agent(s)	<a href="#">Susan Morrison</a>   <a href="#">Joanne Earle</a>   <a href="#">Lloyd Nash</a>



## 17 PIPPY PLACE, ST. JOHN'S ICX® #: I104317

Size	2,800 square feet	Details	Several offices, kitchenette & boardroom in sought after Pippy Park.
Price	\$16.00 psf Semi-Gross	Agent(s)	<a href="#">Susan Morrison</a>   <a href="#">Joanne Earle</a>   <a href="#">Lloyd Nash</a>

# INDUSTRIAL SPACE FOR LEASE

Click on a property photo to obtain further information online



**REDUCED PRICE, 54B CLYDE AVENUE, MOUNT PEARL** ICX® #: N/A

Size	12,000 sf	Details	Open warehouse is 18' clear, dock level doors, leaseholds in place.
Price	\$8.50 psf Net	Agent(s)	<a href="#">Susan Morrison</a>   <a href="#">Joanne Earle</a>   <a href="#">Lloyd Nash</a>

# COMMERCIAL/RETAIL SPACE FOR LEASE

Click on a property photo to obtain further information online



<b>NEW, 335 DUCKWORTH STREET, ST. JOHN'S</b>			<b>ICX® #: 1110791</b>
Size	563 – 1,322 sf	Details	Prime street level retail space located in downtown St. John's.
Price	\$20.00 psf Net	Agent(s)	Lloyd Nash

# FOR SALE

Click on a property photo to obtain further information online



BARROWS ROAD, QUIDIVIDI			ICX® #: N/A
Size	5,200 sf	Details	Harbour front site with 2 storey former restaurant and gift shop.
Price	Please Contact	Agent(s)	<a href="#">Susan Morrison</a>   <a href="#">Joanne Earle</a>   <a href="#">Lloyd Nash</a>

# LEASED & SOLD PROPERTIES



<b>LEASED, 3 VANGUARD COURT, ST. JOHN'S</b>		<b>ICX® #: 197750</b>	
Size	4,000 sf	Details	20' ceiling, grade level door, on-site parking.
Price	\$10.50 psf Net	Agent(s)	Susan Morrison   Joanne Earle   Lloyd Nash

For a complete list of all our available properties please visit us online at  
[www.cwatlantic.com](http://www.cwatlantic.com)



**Joanne Earle, B.B.A**  
Commercial Sales & Leasing  
709.576.3777 Direct  
709.699.6832 Mobile  
709.576.3778 Fax  
[jearle@cwatlantic.com](mailto:jearle@cwatlantic.com)



**Susan Morrison**  
Commercial Sales & Leasing; Branch Manager  
709.576.3010 Direct  
709.693.9399 Mobile  
709.576.3778 Fax  
[smorrison@cwatlantic.com](mailto:smorrison@cwatlantic.com)



**Lloyd Nash**  
Commercial Sales & Leasing  
709.576.3010 Direct  
709.699.7508 Mobile  
709.576.3778 Fax  
[lnash@cwatlantic.com](mailto:lnash@cwatlantic.com)