

results



talent



knowledge



Cushman & Wakefield Atlantic
Monthly Listings Report
Halifax, Nova Scotia Market
SEPTEMBER 2012





Office Space for Lease

CLICK ON A PROPERTY PHOTO TO OBTAIN FURTHER DETAILS

VISIT OUR WEBSITE AT WWW.CWEAST.COM

NEW – 2050 Gottingen Street, HALIFAX



Size: 2,672 sq. ft.	Details: Reception, 5 offices, 2 large open areas, kitchen, 2 wr (1 with shower) and ample storage.
Price: \$15.00 psf net	Listing Agents: Steve Dexter Mat Houston

NEW – 26 Union Street, BEDFORD



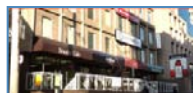
Size: Approx. 14,000 sq. ft.	Details: Newly renovated 2 level office building, 90 exterior parkign spots, available Jan. 2013.
Price: \$13.00 psf net	Listing Agent: Brian Woods

6389 Coburg Road, HALIFAX



Size: 3,300 sq. ft.	Details: Ground floor office space available now on busy transit route.
Price: \$20.00 psf gross - Sublet	Listing Agent: Tom Gerard Mat Houston Phil Bolhuis

1526 Dresden Row, HALIFAX



Size: Various suites, Up to 20,000 sq. ft.	Details: Various office spaces located off Spring Garden Rd. with parking on site.
Price: \$12.00 psf net	Listing Agent: Tom Gerard Mat Houston Phil Bolhuis

211 Horseshoe Lake Drive, HALIFAX



Size: 1,500 sq. ft. – 23,000 sq. ft.	Details: Available January 1, 2013. Ample, parking, T.I.'s negotiable, outdoor common area.
Price: \$14.00 psf net	Listing Agent: Brian Woods

5288 St. Margaret's Bay Road, HALIFAX



Size: Various Suites	Details: Former accounting office & former massage clinic. Leaseholds in place. Available NOW.
Price: \$12.00 Net	Listing Agents: Tom Gerard Mat Houston Phil Bolhuis



Office Space for Lease

CLICK ON A PROPERTY PHOTO TO OBTAIN FURTHER DETAILS

VISIT OUR WEBSITE AT WWW.CWEAST.COM

1718 Argyle Street, HALIFAX



Size:	3,041 sq. ft.	Details:	Great downtown location! Sublet term expires December 31, 2013.
Price:	\$30.82	Listing Agents:	Michael Brown

5445 St. Margaret's Bay Road, HALIFAX



Size:	Up to 4,000 sq. ft.	Details:	Ground and second floor office space. Signage opportunity & parking.
Price:	\$14.00 - \$16.00 Net psf	Listing Agents:	Jamie Ferguson

11 Thornhill Drive, DARTMOUTH



Size:	1,739 sq. ft. & 1,287sq. ft.	Details:	Ample onsite parking. Good exposure from high traffic intersection.
Price:	\$9.00 psf net	Listing Agent:	Michael Brown

St. Lawrence Place, HALIFAX



Size:	24,800 sq. ft.	Details:	Pre-Leasing new construction Class A office space. Available Spring 2013.
Price:	Please contact for details	Listing Agents:	Andrew Belliveau Mat Houston

18 Acadia Street, HALIFAX



Size:	4,377 sq. ft.	Details:	2,572 sf ground floor finished office space, 1,805 sf third floor raw space. Medical focus.
Price:	Starting at \$11.50 net	Listing Agents:	Steven Dexter

36 Solutions Drive, HALIFAX



Size:	1,200 sq. ft.	Details:	Modern ground floor office space. Convenient Clayton Park / Bayers Lake location.
Price:	Negotiable	Listing Agents:	Jamie Ferguson



Office Space for Lease

3

CLICK ON A PROPERTY PHOTO TO OBTAIN FURTHER DETAILS

VISIT OUR WEBSITE AT WWW.CWEAST.COM

1657 Bedford Row, HALIFAX



Size: 7,200 sq. ft.	Details: Halifax Harbour views, large second floor space, could accommodate a number of uses.
Price: \$12.00 Net	Listing Agents: Michael Brown

1888 Brunswick Street, HALIFAX



Size: 2,887 sq. ft.	Details: Turnkey premises which includes boardroom, offices, server room, storage & kitchenette.
Price: \$17.75 Gross psf – Sublet	Listing Agent: Michael Brown Brian Woods

1521 Grafton Street, HALIFAX



Size: 2,032 sq. ft.	Details: 2 nd floor space; 6 offices/workrooms, reception and interior washroom. Parking available.
Price: \$18.00 Gross psf (utilities included)	Listing Agents: Tom Gerard Mat Houston Phil Bolhuis

Magazine Landing, BURNSIDE



Size: 16,000 sq. ft.	Details: Office / retail development off Windmill Road. Now pre-leasing. Fall 2012 occupancy.
Price: \$17.75 Net psf	Listing Agent: Robert Jennings

2742 Robie Street, HALIFAX



Size: 1,100 sq. ft.	Details: Located on high traffic street, reception, boardroom, office, open area, kitchen & parking
Price: \$2,500 / month utilities included	Listing Agents: Tom Gerard Mat Houston Phil Bolhuis

Hobson's Lake Drive, HALIFAX



Size: Up to 19,000 sq. ft. per floor	Details: Office / retail development. Now pre-leasing. Spring 2013 occupancy.
Price: \$18.00 office & \$20.00 retail psf net	Listing Agent: Michael Brown Brian Woods



Office Space for Lease

4

CLICK ON A PROPERTY PHOTO TO OBTAIN FURTHER DETAILS

VISIT OUR WEBSITE AT WWW.CWEAST.COM

5743 University Avenue, HALIFAX



Size: 2,800 sq. ft.	Details: Ground level office/retail space with excellent exposure & signage, Sublet expires Oct '13
Price: \$26,00 Net psf	Listing Agents: Steven Dexter Mat Houston

61112 Quinpool Road, HALIFAX



Size: 1,005 sq. ft.	Details: Second level office; reception, 3 offices, kitchenette, washroom and storage closet.
Price: \$25.00 Gross psf	Listing Agent: Steven Dexter Mat Houston



Industrial Space for Lease

5

CLICK ON A PROPERTY PHOTO TO OBTAIN FURTHER DETAILS

VISIT OUR WEBSITE AT WWW.CWEAST.COM

NEW – 31 Mount Hope Avenue, DARTMOUTH



Size: 7,200 sq. ft.	Details: 5,700 sf warehouse area, 1,500 sf office area, 25' height, 12' – 18' grade loading doors
Price: \$8.00 Net psf	Listing Agents: Tom Gerard Mat Houston Phil Bolhuis

541 Pleasant Street, DARTMOUTH



Size: 9,000 sq. ft.	Details: 0.84 acre site, 14' clear ceiling height, Two 12'x12' Grade loading doors.
Price: \$12.00 Net psf	Listing Agents: Tom Gerard Mat Houston Phil Bolhuis

180 Thornhill Drive, DARTMOUTH



Size: 70,000 sq. ft.	Details: Located in Burnside Industrial Park. Includes office and warehouse space.
Price: \$5.00 Net psf	Listing Agents: Tom Gerard Mat Houston Phil Bolhuis

170 Thornhill Drive, DARTMOUTH



Size: 40,445 sq. ft.	Details: Located in Burnside Industrial Park. Includes office and warehouse space.
Price: \$6.00 Net psf	Listing Agents: Tom Gerard Mat Houston Phil Bolhuis

107 Joseph Zatzman Drive, HALIFAX



Size: 2,480 sq. ft.	Details: 14' x 10' Grade loading door, 16' Clear ceiling height. Includes office & warehouse space.
Price: \$11.00 Net psf	Listing Agents: Tom Gerard Mat Houston Phil Bolhuis

95 Akerley Boulevard, DARTMOUTH



Size: 2,880 sq. ft.	Details: Kitchenette & 4 private offices, One 10'x10' grade loading door. Term expires July 2013.
Price: \$6.00 Net psf– Sublet	Listing Agents: Tom Gerard Mat Houston Phil Bolhuis



Industrial Space for Lease

6

CLICK ON A PROPERTY PHOTO TO OBTAIN FURTHER DETAILS

VISIT OUR WEBSITE AT WWW.CWEAST.COM

3200 Kempt Road, HALIFAX



Size:	4,375 sq. ft. - Sublet	Details:	Six 10x10 grade loading, One 12x10 grade loading door, Aug 31, 2015 lease expiry.
Price:	\$7.50 Net psf	Listing Agents:	Tom Gerard Mat Houston Phil Bolhuis

53 & 93 Memorial Drive, NORTH SYDNEY



Size:	Up to 167,372 sq. ft.	Details:	Excellent strategic location 3 blocks from Port of Sydney. Min 24' clear ceilings.
Price:	\$3.00 psf Net	Listing Agents:	Steven Dexter

67 Wright Avenue, DARTMOUTH



Size:	15,000 - 31,537 sq. ft.	Details:	4 dock loading doors, 18' clear ceilings, Natural gas heating, refrigerated storage.
Price:	\$5.00 Net psf	Listing Agents:	Tom Gerard Mat Houston Phil Bolhuis



Commercial / Retail Space for Lease

CLICK ON A PROPERTY PHOTO TO OBTAIN FURTHER DETAILS

VISIT OUR WEBSITE AT WWW.CWEAST.COM

NEW - 5505 Spring Garden Road, HALIFAX



Size: 1,500 sq. ft.	Details: Second floor office suite on desirable downtown Halifax location.
Price: \$19.00 psf Net	Listing Agent: Steven Dexter Mat Houston

Hobson's Lake Drive, HALIFAX



Size: Up to 19,000 sq. ft. per floor	Details: Office / retail development. Now pre-leasing. Spring 2013 occupancy.
Price: \$18.00 office & \$20.00 retail psf net	Listing Agent: Michael Brown Brian Woods

12 Elm Avenue, WOLFVILLE



Size: +/- 1,380 sq. ft.	Details: Elm Avenue Center: A retail and office complex.
Price: Please contact	Listing Agent: Bill Denyar

124 Chain Lake Drive, HALIFAX



Size: 5,800 sq. ft.	Details: Open area ideal for large retailer with show room, ample parking, signage opportunity
Price: \$14.00 psf Net	Listing Agent: Tom Gerard Mat Houston Phil Bolhuis

Magazine Landing, BURNSIDE



Size: 11,300 sq. ft.	Details: Office / retail development off Windmill Road. Now pre-leasing. Fall 2012 occupancy.
Price: \$22.00 Net psf	Listing Agent: Robert Jennings

18 Elm Avenue, WOLFVILLE



Size: 1,373 sq. ft.	Details: Open concept with one private office & storage. Onsite parking available.
Price: \$14.00 Net psf	Listing Agent: Bill Denyar



Commercial / Retail Space for Lease

CLICK ON A PROPERTY PHOTO TO OBTAIN FURTHER DETAILS

VISIT OUR WEBSITE AT WWW.CWEAST.COM

5486 Spring Garden Road (Mills), HALIFAX



Size: ONLY 950 sq. ft. REMAINING!	Details: PRIME retail space located In the Mills building on Spring Garden Road
Price: Starting rents \$30 net psf	Listing Agents: Andrew Belliveau Steven Dexter

6390 Cork Street, HALIFAX



Size: 870 sq. ft.	Details: Ground level flexible use space. Landlord open to tenant allowances based on term.
Price: \$1,200 Semi-Gross / Month	Listing Agents: Brian Woods

St. Lawrence Place, HALIFAX



Size: 6,200 sq. ft.	Details: Pre-Leasing new construction high profile retail space. Available Spring 2013.
Price: Please contact for details	Listing Agents: Andrew Belliveau Mat Houston

600 Windmill Road, DARTMOUTH



Size: 3,000 sq. ft.	Details: High profile commercial suite with 24' ceilings, rear grade loading, ample parking on-site.
Price: \$9.00 psf Net	Listing Agents: Tom Gerard Mat Houston Phil Bolhuis

Notting Village, (On the corner of Boland & Wyse Road), DARTMOUTH



Size: 1,500 sq. ft. REMAINING	Details: Office / retail ground level space. Excellent signage and traffic exposure
Price: \$15.00 NNN	Listing Agent: Robert Jennings

6100 Young Street, HALIFAX



Size: +/- 70,000 sq. ft.	Details: Proposed development, +/- 30,000 sf retail, +/-40,000 sf office and 321 apartment units.
Price: Please call for details	Listing Agent: Jamie Ferguson



Commercial / Retail Space for Lease

CLICK ON A PROPERTY PHOTO TO OBTAIN FURTHER DETAILS

VISIT OUR WEBSITE AT WWW.CWEAST.COM

644 Portland Street, DARTMOUTH



Size: 1,700 sq. ft.	Details: Co-Tenants include Cash Money, Hamachi House, Tim Horton's & CORA's.
Price: \$22.00 psf Net – Sublet	Listing Agent: Steven Dexter

5288 St. Margaret's Bay Road, HALIFAX



Size: Up to 5,500 sq. ft.	Details: Located in high exposure area with ample parking onsite. Can be subdivided.
Price: Negotiable	Listing Agent: Tom Gerard Mat Houston Phil Bolhuis

5144 Morris Street (The Vic), HALIFAX



Size: 4,000 sq. ft.	Details: Located on the busy corner of Hollis & Morris Street, excellent signage opportunity.
Price: \$25.00 psf Net	Listing Agents: Michael Brown

30 Farnham Gate, HALIFAX



Size: 1,790 sq. ft.	Details: Ground level retail suite in busy Clayton Park Plaza, Rockingham Ridge, off Dunbrack St.
Price: \$17.50 psf Net	Listing Agents: Tom Gerard Mat Houston Phil Bolhuis



Industrial Space for Sale

10

CLICK ON A PROPERTY PHOTO TO OBTAIN FURTHER DETAILS

VISIT OUR WEBSITE AT WWW.CWEAST.COM

NEW – 65 Thornhill Drive, DARTMOUTH



Size:	27,474 sq. ft.	Details:	1.825 acre lot, asphalt paved tractor trailer entrance (suitable for 53' trailers)
Price:	\$2,100,000	Listing Agents:	Tom Gerard Mat Houston Phil Bolhuis

58 Lakecrest Drive, DARTMOUTH



Size:	21,112 sq. ft.	Details:	Warehouse, 6 offices, reception, kitchenette, janitor room, mezzanine , & 5 washrooms
Price:	\$1,550,000	Listing Agents:	Tom Gerard Mat Houston Phil Bolhuis

Bowood, 11 Lupin Lane, SHELBURNE



Size:	132,000 sq. ft.	Details:	Mixed use community development consisting of 11 buildings.
Price:	\$1,550,000	Listing Agents:	Michael Brown Robert Jennings

57 Wright Avenue, DARTMOUTH



Size:	30,000 sq. ft.	Details:	6,000 sq. ft. office, 24,000 s. ft. warehouse, 4 dock loading doors, parking, 2.06 acre lot
Price:	\$2,395,000	Listing Agents:	Tom Gerard Brian Woods Phil Bolhuis



Commercial / Retail Space for Sale

11

CLICK ON A PROPERTY PHOTO TO OBTAIN FURTHER DETAILS

VISIT OUR WEBSITE AT WWW.CWEAST.COM

1867 Highway 359, CENTREVILLE



Size:	5,000 sq. ft.	Details:	Commercial building situated on approx. 1.43 acres of commercial zoned land.
Price:	\$329,000	Listing Agents:	Bill Denyar

172 Cornwallis Street, KENTVILLE



Size:	1,600 sq. ft.	Details:	Commercial building situated on 11,225 sq. ft. of commercial zoned land.
Price:	\$290,000	Listing Agents:	Bill Denyar

1714 St. Margaret's Bay Road, Halifax



Size:	12,242 sq. ft.; 4 acres	Details:	Four buildings on 4 acres of land with ample parking on site.
Price:	\$1,450,000	Listing Agents:	Michael Brown

26-30 Prince Arthur Street & 11-15 Princess Street, AMHERST



Size:	53,948 sq. ft.	Details:	Office & Retail Commercial buildings on 34,848 sq. ft. land including parking lot.
Price:	\$3,900,000	Listing Agents:	Michael Brown

6238 Quinpool Road, HALIFAX



Size:	4,198 sq. ft.	Details:	Mixed use commercial building. Great visibility and signage opportunity on Quinpool Rd.
Price:	\$795,000	Listing Agents:	Tom Gerard Mat Houston Phil Bolhuis

12435 Peggy's Cove Road, HALIFAX



Size:	5,400 sq. ft.	Details:	Open warehouse / shop space, 5 private offices, 3 washroom, multiple loading doors
Price:	\$460,000	Listing Agents:	Robert Jennings



Commercial / Retail Space for Sale

12

CLICK ON A PROPERTY PHOTO TO OBTAIN FURTHER DETAILS

VISIT OUR WEBSITE AT WWW.CWEAST.COM

7116 Highway #1, COLDBROOK



Size: 2,700 sq. ft.

Details:

Corner lot with excellent exposure! Approx. 12,000 cars travel past per day.

Price: \$350,000

Listing Agents:

Bill Denyar



Land for Sale

13

CLICK ON A PROPERTY PHOTO TO OBTAIN FURTHER DETAILS

VISIT OUR WEBSITE AT WWW.CWEAST.COM

Highway #104, AMHERST EXIT



Size:	Up to 23 acres	Details:	Ideal for service, retail, hospitality or extended care.
Price:	Call for details	Listing Agents:	Bill MacAvoy

509 & 511 Pleasant Street, DARTMOUTH



Size:	Approx. 14,629 sq. ft.	Details:	Development land for sale; PID 00248153 & 00634055. Prime location! Zoned C-2 .
Price:	\$351,288	Listing Agents:	Michael Brown

Beech Hill Road, ANTIGONISH



Size:	Over 12 acres	Details:	Commercially zoned and; adjacent to the new divided highway with roundabout access
Price:	\$1,400,000	Listing Agents:	Robert Jennings

390 Windmill Road, DARTMOUTH



Size:	+/- 20,000 sq. ft.	Details:	Vacant corner lot at Windmill Rd. & Fernhill Dr. Potential to build 8,000 sq. ft. building.
Price:	\$350,000	Listing Agents:	Brian Woods



Sold / Leased Properties

CLICK ON A PROPERTY PHOTO TO OBTAIN FURTHER DETAILS

VISIT OUR WEBSITE AT WWW.CWEAST.COM

UNDER AGREEMENT - 100 Highfield Park Drive, DARTMOUTH



Size: 55,965 sq. ft.	Details: Vacant land and small multi-tenant building. Excellent frontage on Victoria Rd & Highfield.
Price: \$1,175,000	Listing Agents: Michael Brown

UNDER AGREEMENT - 617 Windmill Road, DARTMOUTH



Size: Up to 9,467 sq. ft.	Details: 5,064 sf of warehouse with dock & grade loading.. 4,403 sf of warehouse/showroom.
Price: Please contact for details	Listing Agents: Tom Gerard Mat Houston Phil Bolhuis

UNDER AGREEMENT - West Bedford Development, BEDFORD



Size: 8.9 acres	Details: Highly visible retail development site across from new 4 pad arena at entrance to HRM
Price: \$5,500,000	Listing Agents: Steven Dexter

UNDER AGREEMENT - 492-494 Herring Cove Road, HALIFAX



Size: 30,000 sq. ft.	Details: 3 parcels of vacant, untouched, land. Ideal Multi-Residential development. Zoned R-4.
Price: \$250,000	Listing Agents: Michael Brown

UNDER AGREEMENT - Autumn Drive, SPRYFIELD



Size: 5.8 acres	Details: Undeveloped residential zoned RDD.
Price: \$175,000	Listing Agent: Michael Brown

UNDER AGREEMENT - 9 Crestfield Drive & Hammonds Plains Road, HALIFAX



Size: 5.32 acres	Details: Future development potential for seniors complex or assisted living. Zoned P-2.
Price: \$1,159,000	Listing Agents: Michael Brown



Sold / Leased Properties

CLICK ON A PROPERTY PHOTO TO OBTAIN FURTHER DETAILS

VISIT OUR WEBSITE AT WWW.CWEAST.COM

UNDER AGREEMENT - 1274 Hammonds Plains Road, HALIFAX



Size: 3,680 sq. ft.	Details: Currently operating as a church facility. Excellent condition. 24,636 sq. ft. lot.
Price: \$475,000	Listing Agents: Michael Brown



C&WA Commercial Sales & Leasing Advisors

16

CLICK ON A PROPERTY PHOTO TO OBTAIN FURTHER DETAILS

VISIT OUR WEBSITE AT WWW.CWEAST.COM



Andrew Belliveau

Commercial Sales & Leasing
902.482.2998 Office
902.488.8886 Cell
902.425.7374 Fax
abelliveau@cweast.com



Phil Bolhuis

Commercial Sales & Leasing
902.425.5887 Office
902.293.4524 Cell
902.425.7374 Fax
pbolhuis@cweast.com



Michael Brown

Commercial Sales & Leasing
902.482.1767 Office
902.229.6179 Cell
902.425.7374 Fax
mbrown@cweast.com



Bill Denyar

Commercial Sales & Leasing
902.698.2207 Cell
902.425.7374 Fax
bdenyar@cweast.com



Steven Dexter

Commercial Sales & Leasing
902.425.0377 Office
902.222.2399 Cell
902.425.7374 Fax
sdexter@cweast.com



Jamie Ferguson

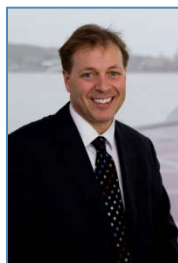
Commercial Sales & Leasing
902.425.4009 Office
902.209.5123 Cell
902.425.7374 Fax
jferguson@cweast.com



C&WA Commercial Sales & Leasing Advisors

CLICK ON A PROPERTY PHOTO TO OBTAIN FURTHER DETAILS

VISIT OUR WEBSITE AT WWW.CWEAST.COM



Tom Gerard, CCIM, SIOR
Senior Representative
Income & Investment Real Estate
902.425.1303 Office
902.830.1318 Cell
902.422.0327 Fax
tgerard@cweast.com



Mat Houston
Commercial Sales & Leasing
902.425.8446 Office
902.412.2940 Cell
902.425.7374 Fax
mhouston@cweast.com



Robert Jennings
Commercial Sales & Leasing
902.425.2512 Office
902.830.8863 Cell
902.425.7374 Fax
rjennings@cweast.com



Brian Woods
Commercial Sales & Leasing
902.422.1321 Office
902.830.5060 Cell
902.425.7374 Fax
bwoods@cweast.com