

results



talent



knowledge



Cushman & Wakefield Atlantic
Monthly Listings Report
Halifax, Nova Scotia Market
MAY 2012



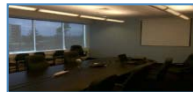


Office Space for Lease

CLICK ON A PROPERTY PHOTO TO OBTAIN FURTHER DETAILS

VISIT OUR WEBSITE AT WWW.CWEAST.COM

NEW - 36 Solutions Drive, HALIFAX



Size:	1,200 sq. ft.	Details:	Modern ground floor office space. Convenient Clayton Park / Bayers Lake location.
Price:	Negotiable	Listing Agents:	Jamie Ferguson

NEW - Hobson's Lake Drive, HALIFAX



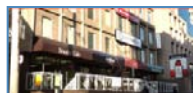
Size:	Up to 19,000 sq. ft. per floor	Details:	Office / retail development. Now pre-leasing. Spring 2013 occupancy.
Price:	\$18.00 office & \$20.00 retail psf net	Listing Agent:	Michael Brown Brian Woods

6389 Coburg Road, HALIFAX



Size:	3,300 sq. ft.	Details:	Ground floor office space available now on busy transit route.
Price:	\$20.00 psf gross - Sublet	Listing Agent:	Tom Gerard Mat Houston Phil Bolhuis

1526 Dresden Row, HALIFAX



Size:	Various suites, Up to 20,000 sq. ft.	Details:	Various office spaces located off Spring Garden Rd. with parking on site.
Price:	\$12.00 psf net	Listing Agent:	Tom Gerard Mat Houston Phil Bolhuis

211 Horseshoe Lake Drive, HALIFAX



Size:	1,500 sq. ft. – 23,000 sq. ft.	Details:	Available January 1, 2013. Ample, parking, T.I.'s negotiable, outdoor common area.
Price:	\$14.00 psf net	Listing Agent:	Brian Woods

5288 St. Margaret's Bay Road, HALIFAX



Size:	Various Suites	Details:	Former accounting office & former massage clinic. Leaseholds in place. Available NOW.
Price:	\$12.00 Net	Listing Agents:	Tom Gerard Mat Houston Phil Bolhuis



Office Space for Lease

CLICK ON A PROPERTY PHOTO TO OBTAIN FURTHER DETAILS

VISIT OUR WEBSITE AT WWW.CWEAST.COM

1718 Argyle Street, HALIFAX



Size: 3,041 sq. ft.	Details: Great downtown location! Sublet term expires December 31, 2013.
Price: \$30.82	Listing Agents: Michael Brown

5445 St. Margaret's Bay Road, HALIFAX



Size: Up to 4,000 sq. ft.	Details: Ground and second floor office space. Signage opportunity & parking.
Price: \$14.00 - \$16.00 Net psf	Listing Agents: Jamie Ferguson

111 Ilsley Avenue, DARTMOUTH



Size: 2,400 sq. ft.	Details: Professional second floor office space in Burnside Industrial Park. Ample parking onsite.
Price: \$14.00 net psf	Listing Agent: Michael Brown

St. Lawrence Place, HALIFAX



Size: 24,800 sq. ft.	Details: Pre-Leasing new construction Class A office space. Available Spring 2013.
Price: Please contact for details	Listing Agents: Andrew Belliveau

998 Parkland Drive, HALIFAX



Size: 3,266 sq. ft.	Details: Second floor office space. Ample onsite parking. Good high traffic location & exposure.
Price: \$15.00 net psf	Listing Agents: Michael Brown

617 Windmill Road, HALIFAX



Size: 3,864 sq. ft.	Details: Fully finished office space in 2 separate buildings
Price: Please contact for details	Listing Agents: Tom Gerard Mat Houston Phil Bolhuis



Office Space for Lease

3

CLICK ON A PROPERTY PHOTO TO OBTAIN FURTHER DETAILS

VISIT OUR WEBSITE AT WWW.CWEAST.COM

1657 Bedford Row, HALIFAX



Size:	7,200 sq. ft.	Details:	Halifax Harbour views, large second floor space, could accommodate a number of uses.
Price:	\$12.00 Net	Listing Agents:	Michael Brown

1888 Brunswick Street, HALIFAX



Size:	2,887 sq. ft.	Details:	Turnkey premises which includes boardroom, offices, server room, storage & kitchenette.
Price:	\$17.75 Gross psf – Sublet	Listing Agent:	Michael Brown Brian Woods

1521 Grafton Street, HALIFAX



Size:	2,032 sq. ft.	Details:	2 nd floor space; 6 offices/workrooms, reception and interior washroom. Parking available.
Price:	\$18.00 Gross psf (utilities included)	Listing Agents:	Tom Gerard Mat Houston Phil Bolhuis

Magazine Landing, BURNSIDE



Size:	16,000 sq. ft.	Details:	Office / retail development off Windmill Road. Now pre-leasing. Fall 2012 occupancy.
Price:	\$17.75 Net psf	Listing Agent:	Robert Jennings

18 Acadia Street, HALIFAX



Size:	4,377 sq. ft.	Details:	2,572 sf ground floor finished office space, 1,805 sf third floor raw space. Medical focus.
Price:	Starting at \$11.50 net	Listing Agents:	Steven Dexter

2830 Agricola Street, HALIFAX



Size:	2,350 sq. ft.	Details:	Newly renovated professional offices that are move-in-ready. Onsite parking available.
Price:	\$16.00 Semi-Gross psf	Listing Agent:	Tom Gerard Mat Houston Phil Bolhuis



Office Space for Lease

4

CLICK ON A PROPERTY PHOTO TO OBTAIN FURTHER DETAILS

VISIT OUR WEBSITE AT WWW.CWEAST.COM

11 Thornhill Drive, DARTMOUTH



Size: 1,739 sq. ft. & 1,287sq. ft.

Details: Ample onsite parking. Good exposure from high traffic intersection.

Price: \$9.00 psf net

Listing Agent: Michael Brown



Industrial Space for Lease

5

CLICK ON A PROPERTY PHOTO TO OBTAIN FURTHER DETAILS

VISIT OUR WEBSITE AT WWW.CWEAST.COM

NEW - 107 Joseph Zatzman Drive, HALIFAX



Size:	2,480 sq. ft.	Details:	14' x 10' Grade loading door, 16' Clear ceiling height. Includes office & warehouse space.
Price:	\$11.00 Net psf	Listing Agents:	Tom Gerard Mat Houston Phil Bolhuis

541 Pleasant Street, DARTMOUTH



Size:	9,000 sq. ft.	Details:	0.84 acre site, 14' clear ceiling height, Two 12'x12' Grade loading doors.
Price:	\$12.00 Net psf	Listing Agents:	Tom Gerard Mat Houston Phil Bolhuis

180 Thornhill Drive, DARTMOUTH



Size:	70,000 sq. ft.	Details:	Located in Burnside Industrial Park. Includes office and warehouse space.
Price:	\$5.00 Net psf	Listing Agents:	Tom Gerard Mat Houston Phil Bolhuis

86 Troop Avenue, DARTMOUTH



Size:	16,627 sq. ft.	Details:	3 dock loading doors, 24' ceiling height, excellent signage opportunity facing Burnside Dr.
Price:	\$7.50 Net psf – Sublet	Listing Agents:	Andrew Belliveau

31 Raddall Avenue, DARTMOUTH



Size:	2,494 sq. ft.	Details:	One 14' x 12' grade loading door per bay. 18'-20' ceiling height. Partial office built out.
Price:	\$7.00 Net psf	Listing Agents:	Tom Gerard Mat Houston Phil Bolhuis

95 Akerley Boulevard, DARTMOUTH



Size:	2,880 sq. ft.	Details:	Kitchenette & 4 private offices, One 10'x10' grade loading door. Term expires July 2013.
Price:	\$6.00 Net psf– Sublet	Listing Agents:	Tom Gerard Mat Houston Phil Bolhuis



Industrial Space for Lease

6

CLICK ON A PROPERTY PHOTO TO OBTAIN FURTHER DETAILS

VISIT OUR WEBSITE AT WWW.CWEAST.COM

3200 Kempt Road, HALIFAX



Size:	4,375 sq. ft. - Sublet	Details:	Six 10x10 grade loading, One 12x10 grade loading door, Aug 31, 2015 lease expiry.
Price:	\$7.50 Net psf	Listing Agents:	Tom Gerard Mat Houston Phil Bolhuis

617 Windmill Road, DARTMOUTH



Size:	Up to 9,467 sq. ft.	Details:	5,064 sf of warehouse with dock & grade loading.. 4,403 sf of warehouse/showroom.
Price:	Please contact for details	Listing Agents:	Tom Gerard Mat Houston Phil Bolhuis

67 Wright Avenue, DARTMOUTH



Size:	Up to 31,537 sq. ft.	Details:	4 dock loading doors, 18' clear ceilings, Natural gas heating, refrigerated storage.
Price:	\$5.00 Net psf	Listing Agents:	Tom Gerard Mat Houston Phil Bolhuis

49 Pettipas Drive, BURNSIDE



Size:	1,440 sq. ft.	Details:	Industrial flex, 2 grade loading doors, 14' ceilings, ample yard space.
Price:	\$7.00 Net	Listing Agents:	Tom Gerard Mat Houston Phil Bolhuis

170 Thornhill Drive, DARTMOUTH



Size:	40,445 sq. ft.	Details:	Located in Burnside Industrial Park. Includes office and warehouse space.
Price:	\$6.00 Net psf	Listing Agents:	Tom Gerard Mat Houston Phil Bolhuis

53 & 93 Memorial Drive, NORTH SYDNEY



Size:	Up to 167,372 sq. ft.	Details:	Excellent strategic location 3 blocks from Port of Sydney. Min 24' clear ceilings.
Price:	\$3.00 psf Net	Listing Agents:	Steven Dexter



Commercial / Retail Space for Lease

CLICK ON A PROPERTY PHOTO TO OBTAIN FURTHER DETAILS

VISIT OUR WEBSITE AT WWW.CWEAST.COM

NEW - Hobson's Lake Drive, HALIFAX



Size:	Up to 19,000 sq. ft. per floor	Details:	Office / retail development. Now pre-leasing. Spring 2013 occupancy.
Price:	\$18.00 office & \$20.00 retail psf net	Listing Agent:	Michael Brown Brian Woods

30 Farnham Gate, HALIFAX



Size:	1,790 sq. ft.	Details:	Ground level retail suite in busy Clayton Park Plaza, Rockingham Ridge, off Dunbrack St.
Price:	\$17.50 psf Net	Listing Agents:	Tom Gerard Mat Houston Phil Bolhuis

3514 Joseph Howe Drive, HALIFAX



Size:	1,800 or 2,400 sq. ft.	Details:	Excellent exposure, central location across from Superstore. Ample parking available.
Price:	\$22.00 psf Net	Listing Agent:	Jamie Ferguson

6238 Quinpool Road, HALIFAX



Size:	2,091 Main & 2,107 sq. ft. 2 nd	Details:	Mixed use commercial building. Great visibility and signage opportunity on Quinpool Rd.
Price:	\$20.00 Main & \$10.00 2 nd psf	Listing Agents:	Tom Gerard Mat Houston Phil Bolhuis

Magazine Landing, BURNSIDE



Size:	11,300 sq. ft.	Details:	Office / retail development off Windmill Road. Now pre-leasing. Fall 2012 occupancy.
Price:	\$22.00 Net psf	Listing Agent:	Robert Jennings

5 Cumberland Court, DARTMOUTH



Size:	1,247, 1,030, 6,000 sq. ft.	Details:	Retail / office space in well established retail plaza.
Price:	\$18.00 Net	Listing Agent:	Andrew Belliveau Robert Jennings



Commercial / Retail Space for Lease

CLICK ON A PROPERTY PHOTO TO OBTAIN FURTHER DETAILS

VISIT OUR WEBSITE AT WWW.CWEAST.COM

5486 Spring Garden Road (Mills), HALIFAX



Size: ONLY 950 sq. ft. REMAINING!

Details: PRIME retail space located In the Mills building on Spring Garden Road

Price: Starting rents \$30 net psf

Listing Agents: [Andrew Belliveau](#) | [Steven Dexter](#)

6390 Cork Street, HALIFAX



Size: 870 sq. ft.

Details: Ground level flexible use space. Landlord open to tenant allowances based on term.

Price: \$1,200 Semi-Gross / Month

Listing Agents: [Brian Woods](#)

St. Lawrence Place, HALIFAX



Size: 6,200 sq. ft.

Details: Pre-Leasing new construction high profile retail space. Available Spring 2013.

Price: Please contact for details

Listing Agents: [Andrew Belliveau](#)

600 Windmill Road, DARTMOUTH



Size: 6,920 sq. ft.

Details: High profile office, showroom with warehouse & yard space. Ample parking on-site.

Price: Please contact

Listing Agents: [Tom Gerard](#) | [Mat Houston](#) | [Phil Bolhuis](#)

Notting Village, (On the corner of Boland & Wyse Road), DARTMOUTH



Size: 1,500 sq. ft. REMAINING

Details: Office / retail ground level space. Excellent signage and traffic exposure

Price: \$15.00 NNN

Listing Agent: [Robert Jennings](#)

1465 St. Margaret's Bay Road, HALIFAX



Size: 1,000 sq. ft.

Details: Highly visible location on busy thoroughfare. Ample parking, signage opportunity.

Price: \$20.00 psf Net

Listing Agent: [Tom Gerard](#) | [Mat Houston](#) | [Phil Bolhuis](#)



Commercial / Retail Space for Lease

CLICK ON A PROPERTY PHOTO TO OBTAIN FURTHER DETAILS

VISIT OUR WEBSITE AT WWW.CWEAST.COM

117 Kearney Lake Road, HALIFAX



Size: 1,658 sq. ft.	Details: Former Physiotherapy Clinic in Wedgewood Plaza. Good exposure, signage and parking!
Price: \$19.00 net psf	Listing Agents: Michael Brown

5288 St. Margaret's Bay Road, HALIFAX



Size: Up to 5,500 sq. ft.	Details: Located in high exposure area with ample parking onsite. Can be subdivided.
Price: \$17.75 Net psf	Listing Agent: Tom Gerard Mat Houston Phil Bolhuis

5144 Morris Street (The Vic), HALIFAX



Size: 4,000 sq. ft.	Details: Located on the busy corner of Hollis & Morris Street, excellent signage opportunity.
Price: \$25.00 psf Net	Listing Agents: Michael Brown

610 Wright Avenue, DARTMOUTH



Size: 2,000 sq. ft.	Details: Retail opportunity in brand new, state of the art building with National co-tenants.
Price: \$15.00 psf Net	Listing Agents: Steven Dexter

6100 Young Street, HALIFAX



Size: +/- 70,000 sq. ft.	Details: Proposed development, +/- 30,000 sf retail, +/-40,000 sf office and 321 apartment units.
Price: Please call for details	Listing Agent: Jamie Ferguson

644 Portland Street, DARTMOUTH



Size: 1,700 sq. ft.	Details: Co-Tenants include Cash Money, Hamachi House, Tim Horton's & CORA's.
Price: \$22.00 psf Net – Sublet	Listing Agent: Steven Dexter



Industrial Space for Sale

10

CLICK ON A PROPERTY PHOTO TO OBTAIN FURTHER DETAILS

VISIT OUR WEBSITE AT WWW.CWEAST.COM

NEW - Bowood, 11 Lupin Lane, SHELBURNE



Size:	132,000 sq. ft.	Details:	Mixed use community development consisting of 11 buildings.
Price:	\$1,550,000	Listing Agents:	Michael Brown Robert Jennings



Commercial / Retail Space for Sale

11

CLICK ON A PROPERTY PHOTO TO OBTAIN FURTHER DETAILS

VISIT OUR WEBSITE AT WWW.CWEAST.COM

6238 Quinpool Road, HALIFAX



Size:	4,198 sq. ft.	Details:	Mixed use commercial building. Great visibility and signage opportunity on Quinpool Rd.
Price:	\$795,000	Listing Agents:	Tom Gerard Mat Houston Phil Bolhuis

617 Windmill Road, DARTMOUTH



Size:	27,215 sq. ft.	Details:	High exposure location with ample customer parking and fenced in compound.
Price:	\$2,815,000	Listing Agents:	Tom Gerard Mat Houston Phil Bolhuis

1714 St. Margaret's Bay Road, Halifax



Size:	12,242 sq. ft.; 4 acres	Details:	Four buildings on 4 acres of land with ample parking on site.
Price:	\$1,450,000	Listing Agents:	Michael Brown

26-30 Prince Arthur Street & 11-15 Princess Street, AMHERST



Size:	53,948 sq. ft.	Details:	Office & Retail Commercial buildings on 34,848 sq. ft. land including parking lot.
Price:	\$3,900,000	Listing Agents:	Michael Brown




Land for Sale

12


CLICK ON A PROPERTY PHOTO TO OBTAIN FURTHER DETAILS

VISIT OUR WEBSITE AT WWW.CWEAST.COM

NEW - Lot R-Y-1-A, Cobequid Road, WINDSOR JUNCTION

	Size: 2.75 acres	Details: Industrial zoned land.
	Price: \$595,000	Listing Agents: Tom Gerard Mat Houston Phil Bolhuis


269 Baker Drive, DARTMOUTH

	Size: Up to 1 acre	Details: Ideal for retail developer or end user tenant. Minutes from Highways 111 and 118.
	Price: Please contact	Listing Agents: Steve Dexter


Beech Hill Road, ANTIGONISH

	Size: Over 12 acres	Details: Commercially zoned and; adjacent to the new divided highway with roundabout access
	Price: \$1,400,000	Listing Agents: Robert Jennings


390 Windmill Road, DARTMOUTH

	Size: +/- 20,000 sq. ft.	Details: Vacant corner lot at Windmill Rd. & Fernhill Dr. Potential to build 8,000 sq. ft. building.
	Price: \$350,000	Listing Agents: Brian Woods

301 Sky (Bell) Boulevard, ENFIELD

	Size: 110.58 acres	Details: Opposite to the Halifax Stanfield International Airport with Highway #102 visibility.
	Price: \$880,000	Listing Agent: Tom Gerard Brian Woods

Highway #104, AMHERST EXIT

	Size: Up to 23 acres	Details: Ideal for service, retail, hospitality or extended care.
	Price: Call for details	Listing Agents: Andrew Belliveau Bill MacAvoy



Land for Sale

13

CLICK ON A PROPERTY PHOTO TO OBTAIN FURTHER DETAILS

VISIT OUR WEBSITE AT WWW.CWEAST.COM

509 & 511 Pleasant Street, DARTMOUTH



Size:	Approx. 14,629 sq. ft.	Details:	Development land for sale; PID 00248153 & 00634055. Prime location! Zoned C-2 .
Price:	\$351,288	Listing Agents:	Michael Brown

West Bedford Development, BEDFORD



Size:	8.9 acres	Details:	Highly visible retail development site across from new 4 pad arena at entrance to HRM
Price:	\$5,500,000	Listing Agents:	Steven Dexter



Sold / Leased Properties

14

CLICK ON A PROPERTY PHOTO TO OBTAIN FURTHER DETAILS

VISIT OUR WEBSITE AT WWW.CWEAST.COM

UNDER AGREEMENT - 100 Highfield Park Drive, DARTMOUTH



Size:	55,965 sq. ft.	Details:	Vacant land and small multi-tenant building. Excellent frontage on Victoria Rd & Highfield.
Price:	\$1,175,000	Listing Agents:	Michael Brown

UNDER AGREEMENT - 72 - 74 Primrose Street, DARTMOUTH



Size:	1 acre	Details:	2 undeveloped parcels of R-3 zoned Multi-Family Land. Potential of up to 45 res. units.
Price:	\$350,000	Listing Agent:	Michael Brown

UNDER AGREEMENT - 140 Ilsley Avenue, DARTMOUTH



Size:	14,460 sq. ft.	Details:	Single storey, steel frame construction industrial building.
Price:	\$1,350,000	Listing Agents:	Michael Brown Tom Gerard

UNDER AGREEMENT - 5 Cumberland Court, DARTMOUTH



Size:	1,247, 1,030 , 6,000 sq. ft.	Details:	Retail / office space in well established retail plaza.
Price:	\$18.00 Net	Listing Agent:	Andrew Belliveau Robert Jennings

LEASED - 601 Sackville Drive, LOWER SACKVILLE



Size:	1,013 sq. ft.	Details:	High visibility location on the sought after Sackville Dr. Currently used as a dental clinic.
Price:	\$16.00 Net	Listing Agent:	Jamie Ferguson

UNDER AGREEMENT - 370 Windmill Road, DARTMOUTH



Size:	8,222 sq. ft.	Details:	High exposure location with ample customer parking and fenced in compound.
Price:	\$695,000	Listing Agents:	Tom Gerard Mat Houston Phil Bolhuis



Sold / Leased Properties

CLICK ON A PROPERTY PHOTO TO OBTAIN FURTHER DETAILS

VISIT OUR WEBSITE AT WWW.CWEAST.COM

UNDER AGREEMENT - 31 Orion Court, DARTMOUTH



Size: 34,800 sq. ft. & 3.27 acres	Details: A 3.27 acres, including 5 buildings, and electric wind turbine.
Price: \$1,995,000	Listing Agents: Tom Gerard Mat Houston Phil Bolhuis

UNDER AGREEMENT - 492-494 Herring Cove Road, HALIFAX



Size: 30,000 sq. ft.	Details: 3 parcels of vacant, untouched, land. Ideal Multi-Residential development. Zoned R-4.
Price: \$250,000	Listing Agents: Michael Brown

UNDER AGREEMENT - 1274 Hammonds Plains Road, HALIFAX



Size: 3,680 sq. ft.	Details: Currently operating as a church facility. Excellent condition. 24,636 sq. ft. lot.
Price: \$475,000	Listing Agents: Michael Brown

UNDER AGREEMENT - 9 Crestfield Drive & Hammonds Plains Road, HALIFAX



Size: 5.32 acres	Details: Future development potential for seniors complex or assisted living. Zoned P-2.
Price: \$1,159,000	Listing Agents: Michael Brown

UNDER AGREEMENT - Autumn Drive, SPRYFIELD



Size: 5.8 acres	Details: Undeveloped residential zoned RDD.
Price: \$175,000	Listing Agent: Michael Brown



C&WA Commercial Sales & Leasing Advisors

16

CLICK ON A PROPERTY PHOTO TO OBTAIN FURTHER DETAILS

VISIT OUR WEBSITE AT WWW.CWEAST.COM



Andrew Belliveau

Commercial Sales & Leasing
902.482.2998 Office
902.488.8886 Cell
902.425.7374 Fax
abelliveau@cweast.com



Phil Bolhuis

Commercial Sales & Leasing
902.425.5887 Office
902.293.4524 Cell
902.425.7374 Fax
pbolhuis@cweast.com



Michael Brown

Commercial Sales & Leasing
902.482.1767 Office
902.229.6179 Cell
902.425.7374 Fax
mbrown@cweast.com



Bill Denyar

Commercial Sales & Leasing
902.698.2207 Cell
902.425.7374 Fax
bdenyar@cweast.com



Steven Dexter

Commercial Sales & Leasing
902.425.0377 Office
902.222.2399 Cell
902.425.7374 Fax
sdexter@cweast.com



Jamie Ferguson

Commercial Sales & Leasing
902.425.4009 Office
902.209.5123 Cell
902.425.7374 Fax
jferguson@cweast.com



C&WA Commercial Sales & Leasing Advisors

17

CLICK ON A PROPERTY PHOTO TO OBTAIN FURTHER DETAILS

VISIT OUR WEBSITE AT WWW.CWEAST.COM



Tom Gerard, CCIM, SIOR

Senior Representative
Income & Investment Real Estate
902.425.1303 Office
902.830.1318 Cell
902.422.0327 Fax
tgerard@cweast.com



Mat Houston

Commercial Sales & Leasing
902.425.8446 Office
902.412.2940 Cell
902.425.7374 Fax
mhouston@cweast.com



Robert Jennings

Commercial Sales & Leasing
902.425.2512 Office
902.830.8863 Cell
902.425.7374 Fax
rjennings@cweast.com



Brian Woods

Commercial Sales & Leasing
902.422.1321 Office
902.830.5060 Cell
902.425.7374 Fax
bwoods@cweast.com