

# C&WA MONTHLY LISTINGS REPORT

HALIFAX & SURROUNDING AREA

AUGUST 2014

# OFFICE SPACE FOR LEASE

Click on a property photo to obtain further information online



## NEW, 3138 ISLEVILLE STREET, HALIFAX

Size	Up to 1,700 sf	Details	Available Spring 2015, 2 <sup>nd</sup> floor office space in historic Hydrostone district.
Price	\$18.50 psf Net	Agent(s)	Mat Houston   Tom Gerard



## THE TRAMWAY BUILDING, 1598 BARRINGTON STREET, HALIFAX

Size	2,720 sf	Details	3 <sup>rd</sup> floor office space in historic district on high traffic corner.
Price	\$22.00 psf Semi-Gross	Agent(s)	Mat Houston   James Boudreau, CA



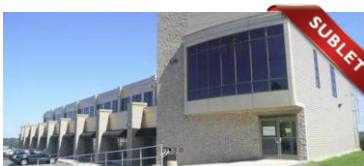
## MANULIFE TOWER ONE, 2717 JOSEPH HOWE DRIVE, HALIFAX

Size	Up to 8,320 sf	Details	Class A office, free parking, café, daycare & fitness facility. Can be demised.
Price	\$16.00 psf Net	Agent(s)	Mat Houston   Tom Gerard



## 7071 BAYERS ROAD, HALIFAX

Size	798 sf	Details	Includes desks & other furnishings, free parking, new carpet.
Price	Please Contact	Agent(s)	James Boudreau, CA



## 530 PORTLAND STREET, DARTMOUTH

Size	500 sf	Details	2 offices, boardroom and reception area. Sublet expires July 31, 2015.
Price	Please Contact	Agent(s)	Mat Houston   Tom Gerard



## 6 MONTHS FREE RENT, MARITIME CENTRE, 1505 BARRINGTON STREET, HALIFAX

Size	UP TO 10,125 sf	Details	Sublet, open concept, 7 private offices, boardroom & kitchenette.
Price	Negotiable	Agent(s)	Tom Gerard   Mat Houston



# OFFICE SPACE FOR LEASE

Click on a property photo to obtain further information online



## 972 COLE HARBOUR ROAD, DARTMOUTH

Size	2,170 sf	Details	Great exposure, with signage opportunity in prime commercial node.
Price	\$15.00 psf Net	Agent(s)	Tom Gerard   Mat Houston



## 5992 SPRING GARDEN ROAD, HALIFAX

Size	1,300 sf	Details	2 <sup>nd</sup> floor private office space for lease, power and communications extra.
Price	\$ 1,700 / month	Agent(s)	Brian Woods



## 98 WILLIAMS AVENUE, DARTMOUTH

Size	3,500 sf	Details	3 private offices, open area, warehouse space and washrooms.
Price	\$21.00 psf Gross	Agent(s)	Tom Gerard   Phil Bolhuis



## MIC MAC PLACE, 219 WAVERLY ROAD, DARTMOUTH

Size	Up to 2,700 sf remaining	Details	2 storey office & retail redevelopment available now.
Price	\$12.00 psf Net	Agent(s)	Mat Houston   Brian Woods



## 19 PORTLAND STREET, DARTMOUTH

Size	Up to 3,314 sf	Details	Professional office space with on-site parking spots. Motivated Sub-landlord.
Price	Negotiable	Agent(s)	Brian Woods   Mat Houston



## 249 BEDFORD HIGHWAY, HALIFAX

Size	2,120 sf	Details	Views of Bedford Basin, great exposure, storage, new windows/siding .
Price	\$12.22 psf Semi-Gross	Agent(s)	Brian Woods

# OFFICE SPACE FOR LEASE

Click on a property photo to obtain further information online



## 26 UNION STREET, BEDFORD

Size	+/- 10,000 sf	Details	2.5 storey multi-tenant office building close to Bedford Place Mall (Target).
Price	\$12.00 psf Net	Agent(s)	Brian Woods   Tom Gerard



## 1 RALSTON AVENUE, DARTMOUTH

Size	10,000 sf	Details	Reception, 26 offices, boardroom, kitchen, washrooms & open area.
Price	\$14.00 psf Net	Agent(s)	Tom Gerard   Mat Houston   Phil Bolhuis



## 942 COLE HARBOUR ROAD, DARTMOUTH

Size	2,480 sf	Details	Former Century 21 Trident office, ground floor, great exposure & visibility.
Price	\$15.00 psf Net	Agent(s)	Tom Gerard   Mat Houston   Phil Bolhuis



## 3260 BARRINGTON STREET, HALIFAX

Size	1,080 sf	Details	Reception area, meeting room, 3 private offices, lunchroom & more.
Price	\$17.00 psf Net	Agent(s)	Brian Woods



## 170 OCHTERLONEY STREET, DARTMOUTH

Size	1,500 sf	Details	7 offices, 2 washrooms, reception and full kitchen with onsite parking.
Price	\$2,500/mo + expenses	Agent(s)	Robert Jennings



## 6112 QUINPOOL ROAD, HALIFAX

Size	1,800 sf	Details	2 <sup>nd</sup> level office space, onsite parking, central location. Flexible & short-term.
Price	\$25.00 psf Gross	Agent(s)	Steven Dexter   Mat Houston

# OFFICE SPACE FOR LEASE

Click on a property photo to obtain further information online



## 18 ACADIA STREET, DARTMOUTH

<b>Size</b>	768, 1,805 & 2,572 sf	<b>Details</b>	2,572 sf 1 <sup>st</sup> floor finished space, 1,805 sf 3 <sup>rd</sup> floor raw space.
<b>Price</b>	Starts at \$11.50 psf Net	<b>Agent(s)</b>	Steven Dexter



## 30 DUKE STREET, TRURO

<b>Size</b>	2,400 sf	<b>Details</b>	Renovated in 2008, heat & lights included, free parking.
<b>Price</b>	\$21.00 psf Gross	<b>Agent(s)</b>	Robert Jennings



## THE AVELLA, 827 BEDFORD HIGHWAY, BEDFORD

<b>Size</b>	Up to 10,923 sf	<b>Details</b>	Sub-dividable units available, Waterfront view, available Fall 2014.
<b>Price</b>	\$18.00 psf Net	<b>Agent(s)</b>	Tom Gerard   Mat Houston



## 66 WRIGHT AVENUE, DARTMOUTH

<b>Size</b>	1,733 sf	<b>Details</b>	2 <sup>nd</sup> floor, premium, quality air conditioned office space, offers high visibility.
<b>Price</b>	\$16.00 psf Gross	<b>Agent(s)</b>	Mat Houston   Phil Bolhuis   Tom Gerard



## 7907 HIGHWAY 7, MUSQUODOBOIT HARBOUR

<b>Size</b>	1,400 sf	<b>Details</b>	Ground floor commercial space located in high traffic plaza next to RBC.
<b>Price</b>	\$15.00 psf Semi-Gross	<b>Agent(s)</b>	Tom Gerard   Mat Houston



## 959 COLE HARBOUR ROAD, DARTMOUTH

<b>Size</b>	2,560 sf	<b>Details</b>	Flexible single-tenant retail/commercial/office, former CIBC bank location.
<b>Price</b>	Please Contact	<b>Agent(s)</b>	Robert Jennings

# OFFICE SPACE FOR LEASE

Click on a property photo to obtain further information online



## 211 HORSESHOE LAKE DRIVE, HALIFAX

<b>Size</b>	Up to 19,000 sf	<b>Details</b>	Available now, ample parking, T.I's negotiable, outdoor common area.
<b>Price</b>	\$12.00 psf Net	<b>Agent(s)</b>	Brian Woods   Tom Gerard



## 4 VIDITO DRIVE, DARTMOUTH

<b>Size</b>	10,000 & 1,500 sf	<b>Details</b>	Reception, 20+ offices, large boardroom, open areas & storage.
<b>Price</b>	\$10.00 psf Net	<b>Agent(s)</b>	Tom Gerard   Phil Bolhuis



## 65 THORNHILL DRIVE, DARTMOUTH

<b>Size</b>	1,000 & 1,500 sf	<b>Details</b>	1 <sup>st</sup> floor & 2 <sup>nd</sup> floor office space available in Burnside Business Park.
<b>Price</b>	\$12.00 psf Gross	<b>Agent(s)</b>	Tom Gerard   Phil Bolhuis



## 617 WINDMILL ROAD, DARTMOUTH

<b>Size</b>	3,864 sf	<b>Details</b>	2 <sup>nd</sup> floor office/showroom on high traffic Burnside corridor. Great visibility.
<b>Price</b>	\$15.00 psf Gross + HST	<b>Agent(s)</b>	Andrew Belliveau



# INDUSTRIAL SPACE FOR LEASE

Click on a property photo to obtain further information online



## NEW, 221 JOSEPH ZATZMAN DRIVE, DARTMOUTH

<b>Size</b>	4,800 sf	<b>Details</b>	4,800 square feet of warehouse space for sublet with 2 dock loading doors.
<b>Price</b>	\$8.00 psf Gross	<b>Agent(s)</b>	Phil Bolhuis   Mat Houston



## 19 AKERLEY BOULEVARD, DARTMOUTH

<b>Size</b>	22,750 sf	<b>Details</b>	Dock & grade loading, 5 ton crane, 7,000 sf mezzanine office.
<b>Price</b>	\$5.75 psf Net	<b>Agent(s)</b>	Phil Bolhuis   Tom Gerard



## NEW PRICE, 180 THORNHILL DRIVE, DARTMOUTH

<b>Size</b>	+/- 70,000 sf	<b>Details</b>	5 dock loading doors, 21' clear ceiling height, centrally located in Burnside.
<b>Price</b>	\$8.00 psf Semi-Gross	<b>Agent(s)</b>	Tom Gerard   Phil Bolhuis



## 170 THORNHILL DRIVE, DARTMOUTH

<b>Size</b>	38,758 sf	<b>Details</b>	Located in Burnside Ind. Park. Includes office & warehouse space.
<b>Price</b>	\$6.00 psf Net	<b>Agent(s)</b>	Tom Gerard   Phil Bolhuis



## 53 & 93 MEMORIAL DRIVE, NORTH SYDNEY

<b>Size</b>	Up to 167,372 sf	<b>Details</b>	Excellent location 3 blocks from Port of Sydney. Min 24' clear ceilings.
<b>Price</b>	\$4.50 psf Net	<b>Agent(s)</b>	Steven Dexter



## GRASSY BROOK PLACE, 171 JOHN SAVAGE AVENUE, DARTMOUTH

<b>Size</b>	Up to 25,000 sf	<b>Details</b>	Under construction, bay size 6,250 sf, 28' ceiling height, available Sep. 2014.
<b>Price</b>	\$9.75 psf NNN	<b>Agent(s)</b>	Bill MacAvoy

# INDUSTRIAL SPACE FOR LEASE

Click on a property photo to obtain further information online



## 118 CUTLER AVENUE, DARTMOUTH

<b>Size</b>	8,863 - 17,740 sf	<b>Details</b>	20' clear ceilings, 5 dock loading doors, 2 units available 8,863 sf + 8,877 sf.
<b>Price</b>	\$8.00 psf Net	<b>Agent(s)</b>	Tom Gerard   Phil Bolhuis



## 44 ORION COURT, DARTMOUTH

<b>Size</b>	3,250 - 5,500 sf	<b>Details</b>	New build in Woodside; 20' clear ceiling height, grade loading.
<b>Price</b>	\$8.00 psf Net	<b>Agent(s)</b>	Tom Gerard   Phil Bolhuis



## 11 ACADIA STREET, DARTMOUTH

<b>Size</b>	Up to 14,250 sf	<b>Details</b>	14' clear ceiling height, 3 grade & 1 dock loading doors. Upgraded electrical.
<b>Price</b>	\$6.50 psf Net	<b>Agent(s)</b>	Tom Gerard   Phil Bolhuis



## 161 LIVELY ROAD, MIDDLE SACKVILLE

<b>Size</b>	1,960 sf	<b>Details</b>	Newly constructed commercial bldg, 15' ceiling height, grade loading.
<b>Price</b>	\$1,650 + HST per month	<b>Agent(s)</b>	Phil Bolhuis



## 49 PETTIPAS DRIVE, DARTMOUTH

<b>Size</b>	3 units of 1,440 sf	<b>Details</b>	Warehouse w/grade loading, 14'-16' clear ceiling height, natural gas heating.
<b>Price</b>	\$7.50 psf Net	<b>Agent(s)</b>	Tom Gerard   Phil Bolhuis



## 20 ROSEDALE DRIVE, DARTMOUTH

<b>Size</b>	3,000 & 1,200 sf	<b>Details</b>	3,000 sf warehouse space, 1,200 sf office space for lease.
<b>Price</b>	\$10.00 psf Semi-Gross + elec.	<b>Agent(s)</b>	Phil Bolhuis



# INDUSTRIAL SPACE FOR LEASE

Click on a property photo to obtain further information online



## 38-40 FIELDING AVENUE, DARTMOUTH

<b>Size</b>	5,651 sf	<b>Details</b>	3,844 sf warehouse space & 1,807 sf office space in Burnside.
<b>Price</b>	\$15.00 psf Gross	<b>Agent(s)</b>	Tom Gerard   Phil Bolhuis



## 36 FRAZEE AVENUE, DARTMOUTH

<b>Size</b>	7,317 sf	<b>Details</b>	2,800 sf warehouse with 18' clear ceiling height, 2,259 sf office mezzanine.
<b>Price</b>	\$7.50 psf Net	<b>Agent(s)</b>	Phil Bolhuis   Tom Gerard   Mat Houston

# COMMERCIAL / RETAIL SPACE FOR LEASE

Click on a property photo to obtain further information online



## NEW, 3138 ISLEVILLE STREET, HALIFAX

Size	Up to 3,000 sf	Details	Available Spring 2015, street front retail or LL commercial, Hydrostone area.
Price	\$15.00 – \$25.00 psf Net	Agent(s)	Mat Houston   Tom Gerard



## NEW, 211 PLEASANT STREET, DARTMOUTH

Size	2,250 & 20,000 sf	Details	Former grocery & dollar store for lease, walk to Woodside Ferry Terminal.
Price	Negotiable (motivated)	Agent(s)	Mat Houston   Tom Gerard



## 6112 QUINPOOL ROAD, HALIFAX

Size	Up to 21,505 sf	Details	New construction, Q1 2017, ground floor commercial/retail on busy corner.
Price	\$35.00 psf Net starting	Agent(s)	Steven Dexter   Mat Houston



## 5639 SPRING GARDEN ROAD, HALIFAX

Size	1,151 sf	Details	Prime street level retail space on high-traffic corridor, former Tim Horton's.
Price	\$95.00 psf Net	Agent(s)	Steven Dexter   Mat Houston



## 2983 OXFORD STREET, HALIFAX

Size	1,267 sf	Details	Highly visible mixed use commercial in west end, close to Armdale Rotary.
Price	\$22.00 psf Net	Agent(s)	Brian Woods   Mat Houston



## 1308 ST. MARGARETS BAY ROAD, TANTALLON

Size	1,800 sf per unit	Details	Unique units containing 1,800 sf office & 900 sf warehouse, only 3 left!
Price	\$9.00 psf Net	Agent(s)	Robert Jennings   Phil Bolhuis

# COMMERCIAL / RETAIL SPACE FOR LEASE

Click on a property photo to obtain further information online



## 6100 YOUNG STREET, HALIFAX

Size	+/- 70,000 sf	Details	Proposed development, +/- 30,000 sf retail, & +/- 40,000 office.
Price	Please contact	Agent(s)	Jamie Ferguson



## THE AVELLA, 827 BEDFORD HIGHWAY, BEDFORD

Size	11,025 sf	Details	Bedford Waterfront, approx. 20,000 traffic count daily, available Fall 2014.
Price	\$22.00 psf Net	Agent(s)	Tom Gerard   Mat Houston



## 942 COLE HARBOUR ROAD, DARTMOUTH

Size	2,480 sf	Details	Former Real Estate office, ground floor, great exposure & visibility.
Price	\$15.00 psf Net	Agent(s)	Tom Gerard   Mat Houston



## 219 WAVERLY ROAD, DARTMOUTH

Size	Up to 6,408 sf	Details	2 storey office & retail redevelopment, available now.
Price	\$18.00 psf Net	Agent(s)	Mat Houston   Brian Woods



## GRASSY BROOK PLACE, 171 JOHN SAVAGE AVENUE, DARTMOUTH

Size	Up to 25,000 sf	Details	Under construction, bay size 6,250 sf, 28' ceiling height, available Sep. 2014.
Price	\$9.75 psf NNN	Agent(s)	Bill MacAvoy



## 959 COLE HARBOUR ROAD, DARTMOUTH

Size	2,560 sf	Details	Flexible single-tenant retail/commercial/office, former CIBC bank location.
Price	Please Contact	Agent(s)	Robert Jennings



# COMMERCIAL / RETAIL SPACE FOR LEASE

Click on a property photo to obtain further information online



## 255 BEDFORD HIGHWAY, HALIFAX

Size	2,030 sf	Details	Views of Bedford Basin, highway exposure, natural gas, showroom.
Price	\$14.50 psf Net	Agent(s)	Brian Woods



## 530 HAMMONDS PLAINS ROAD, HALIFAX

Size	Up to 9,000 sf	Details	Showroom, office, and warehouse space, mezzanine storage, parking on-site.
Price	\$13.00 psf Net	Agent(s)	Brian Woods



## 972 COLE HARBOUR ROAD, DARTMOUTH

Size	2,100 sf	Details	Great exposure, with signage opportunity in retail node in Cole Harbour.
Price	\$15.00 psf Net	Agent(s)	Tom Gerard   Mat Houston



## ST. LAWRENCE PLACE, HALIFAX

Size	951 sf remaining	Details	New construction high profile, ground floor retail space. Available now.
Price	Please contact	Agent(s)	Andrew Belliveau   Mat Houston



## 70 GARY MARTIN DRIVE, BEDFORD

Size	Up to 6,500 sf	Details	Ground floor commercial in brand new residential complex, Bedford West.
Price	\$20.00 psf Net	Agent(s)	Tom Gerard   Mat Houston

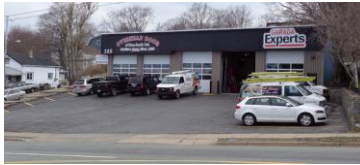


## 7907 HIGHWAY 7, MUSQUODOBOIT HARBOUR

Size	1,400 sf	Details	Ground floor commercial space located in high traffic plaza next to RBC.
Price	\$15.00 psf Semi-Gross	Agent(s)	Tom Gerard   Mat Houston

# COMMERCIAL / RETAIL SPACE FOR LEASE

Click on a property photo to obtain further information online



## 326-328 WINDMILL ROAD, DARTMOUTH

Size	5,707 sf	Details	Reception, 3 offices, showroom, warehouse & meeting room, 5 bay doors.
Price	\$12.00 psf Net	Agent(s)	Brian Woods   Phil Bolhuis



## 363 CALDWELL ROAD, DARTMOUTH

Size	950 sf	Details	Ground floor, ideal for retailer or service business, ample on-site parking.
Price	\$1,200/mo. Semi-Gross	Agent(s)	Mat Houston   Tom Gerard



## 480 PARKLAND DRIVE, HALIFAX

Size	1,140 sf	Details	Ground floor retail/commercial in high traffic plaza in Clayton Park.
Price	\$18.50 psf Net	Agent(s)	Mat Houston   Tom Gerard



## 6164 QUINPOOL ROAD, HALIFAX

Size	2,315 sf	Details	Ground floor commercial space on the busy Quinpool Road.
Price	\$25.00 psf Net	Agent(s)	Mat Houston   Tom Gerard



## 590 PORTLAND STREET, DARTMOUTH

Size	Various	Details	Onsite parking, up to 7,318 sf contiguous, great exposure, signage.
Price	\$15.00 psf Net	Agent(s)	Robert Jennings



## 3260 BARRINGTON STREET, HALIFAX

Size	1,080 sf	Details	Reception area, meeting room, 3 private offices, lunchroom & more.
Price	\$17.00 psf Net	Agent(s)	Brian Woods

# LAND FOR LEASE

Click on a property photo to obtain further information online



## 390 WINDMILL ROAD, DARTMOUTH

<b>Size</b>	20,000 sf	<b>Details</b>	Vacant corner lot, level, graded and graveled. 200' of frontage on Windmill.
<b>Price</b>	\$2,000 / month	<b>Agent(s)</b>	<a href="#">Brian Woods</a>



## 89 JOSEPH ZATZMAN DRIVE, DARTMOUTH

<b>Size</b>	Up to 40,000 sf	<b>Details</b>	Fenced and secure yard storage for lease.
<b>Price</b>	\$2.00 psf Gross	<b>Agent(s)</b>	<a href="#">Phil Bolhuis</a>   <a href="#">Tom Gerard</a>



## 590-600 WINDMILL ROAD, DARTMOUTH

<b>Size</b>	2.3 acres	<b>Details</b>	Demisable 10,000 sf – 100,000 sf, gravel graded yard storage.
<b>Price</b>	\$2.00 psf Semi-Gross	<b>Agent(s)</b>	<a href="#">Tom Gerard</a>   <a href="#">Phil Bolhuis</a>



## 3664 JOSEPH HOWE DRIVE, HALIFAX

<b>Size</b>	24,568 sf	<b>Details</b>	High traffic location. Long or short term lease possibility.
<b>Price</b>	Negotiable	<b>Agent(s)</b>	<a href="#">Tom Gerard</a>   <a href="#">Phil Bolhuis</a>



# OFFICE SPACE FOR SALE

Click on a property photo to obtain further information online



## 211 HORSESHOE LAKE DRIVE, **HALIFAX**

Size	52,996 sf	Details	Multi-tenant office in Bayers Lake with parking for 170, on 3.64 acres of land.
Price	\$7,500,000	Agent(s)	<a href="#">Brian Woods</a>   <a href="#">Tom Gerard</a>



## 24 QUEEN STREET, **PORT HAWKESBURY**

Size	70,000 sf	Details	Former Minacs Call Centre; Class A leaseholds throughout.
Price	Please contact	Agent(s)	<a href="#">Tom Gerard</a>   <a href="#">Robert Jennings</a>



## 1 RALSTON AVENUE, **DARTMOUTH**

Size	10,000 sf	Details	Reception, 26 offices, boardroom, kitchen, washrooms & open area.
Price	\$1,995,000	Agent(s)	<a href="#">Tom Gerard</a>   <a href="#">Mat Houston</a>   <a href="#">Phil Bolhuis</a>



## 3556 DUTCH VILLAGE ROAD, **HALIFAX**

Size	2,925 sf	Details	Great exposure, signage opportunity, 9 private offices, parking for 7 cars.
Price	\$540,000	Agent(s)	<a href="#">Robert Jennings</a>



## 26 UNION STREET, **BEDFORD**

Size	20,788 sf	Details	2.5 storey multi-tenant office building close to Bedford Place Mall (Target).
Price	\$2,200,000	Agent(s)	<a href="#">Brian Woods</a>   <a href="#">Tom Gerard</a>

# INDUSTRIAL SPACE FOR SALE

Click on a property photo to obtain further information online



## 19 AKERLEY BOULEVARD, DARTMOUTH

<b>Size</b>	22,750 sf	<b>Details</b>	Dock & grade loading, 5 ton crane, 7,000 sf mezzanine office.
<b>Price</b>	\$1,500,000	<b>Agent(s)</b>	Phil Bolhuis   Tom Gerard



## 521 WINDMILL ROAD, DARTMOUTH

<b>Size</b>	3,000 sf	<b>Details</b>	2 storey single tenant office & workshop.
<b>Price</b>	\$530,000	<b>Agent(s)</b>	Tom Gerard   Phil Bolhuis



## 4 VIDITO DRIVE, DARTMOUTH

<b>Size</b>	10,948 SF	<b>Details</b>	10,000 square feet of office space over 2 levels, on 1.2 acres of land.
<b>Price</b>	\$1,495,000	<b>Agent(s)</b>	Phil Bolhuis   Tom Gerard



## 6 VIDITO DRIVE, DARTMOUTH

<b>Size</b>	8,060 SF	<b>Details</b>	Full leased truck repair facility on 1.4 acres of land.
<b>Price</b>	\$1,450,000	<b>Agent(s)</b>	Phil Bolhuis   Tom Gerard



## 2470 MAYNARD STREET, HALIFAX

<b>Size</b>	1,277 sf	<b>Details</b>	Commercial/Industrial building on corner lot, zoned C-2, 16' ceiling height.
<b>Price</b>	\$525,000	<b>Agent(s)</b>	Mat Houston   Tom Gerard



## 471 SACKVILLE DRIVE, LOWER SACKVILLE

<b>Size</b>	3,613 sf	<b>Details</b>	Former NAPA Auto Parts, on 0.91 acre lot. 12'-14' clear ceiling height.
<b>Price</b>	\$650,000	<b>Agent(s)</b>	Phil Bolhuis   Tom Gerard

# INDUSTRIAL SPACE FOR SALE

Click on a property photo to obtain further information online



## 100 THORNHILL DRIVE, DARTMOUTH

<b>Size</b>	11,923 sf	<b>Details</b>	8 x 14'x14' grade doors, 1 x 6' x 9' grade door, 1.63 acre corner lot.
<b>Price</b>	\$1,400,000	<b>Agent(s)</b>	Andrew Belliveau   James Boudreau, CA



## 11 ACADIA STREET, DARTMOUTH

<b>Size</b>	23,750 sf	<b>Details</b>	14' clear ceiling height, 3 grade & 1 dock loading doors. 9,500 sf leased.
<b>Price</b>	\$1,795,000	<b>Agent(s)</b>	Tom Gerard   Phil Bolhuis



## 170 THORNHILL DRIVE, DARTMOUTH

<b>Size</b>	38,758 sf	<b>Details</b>	Located in Burnside Industrial Park. Includes office & warehouse space.
<b>Price</b>	\$2,700,000	<b>Agent(s)</b>	Tom Gerard   Phil Bolhuis



## 30 RADDALL AVENUE, DARTMOUTH

<b>Size</b>	13,370 sf   1.71 acre lot	<b>Details</b>	28' clear ceilings, near intersection of Wright Ave., 5 ton Munck Crane.
<b>Price</b>	\$1,695,000	<b>Agent(s)</b>	Phil Bolhuis   Tom Gerard



## 36 FRAZEE AVENUE, DARTMOUTH

<b>Size</b>	7,317 sf	<b>Details</b>	2,800 sf warehouse with 18' clear ceiling height, 2,259 sf office mezzanine.
<b>Price</b>	\$975,000	<b>Agent(s)</b>	Phil Bolhuis   Tom Gerard   Mat Houston



# COMMERCIAL /RETAIL SPACE FOR SALE

Click on a property photo to obtain further information online



## NEW, THE VALLEY INN, WENTWORTH VALLEY

<b>Size</b>	7,436 sf on 5.92 acres	<b>Details</b>	15 room motel, restaurant, 70+ seat pub/lounge close to Ski Wentworth.
<b>Price</b>	\$475,000 + HST	<b>Agent(s)</b>	Andrew Belliveau   James Boudreau, CA



## 3556 DUTCH VILLAGE ROAD, HALIFAX

<b>Size</b>	2,925 sf	<b>Details</b>	Great exposure, signage opportunity, 9 private offices, parking for 7 cars.
<b>Price</b>	\$540,000	<b>Agent(s)</b>	Robert Jennings



## 8410 ST. MARGARETS BAY ROAD, BLACK POINT

<b>Size</b>	+/- 5,000 sf	<b>Details</b>	180' of ocean frontage, 1.14 acres, 10 unit motel & 3 cottages on-site.
<b>Price</b>	\$215,000	<b>Agent(s)</b>	Tom Gerard   Mat Houston



## 10 & 12 WEBSTER STREET, KENTVILLE

<b>Size</b>	32,835 sf	<b>Details</b>	Multi-tenant mixed-use commercial/office investment opportunity.
<b>Price</b>	\$2,800,000	<b>Agent(s)</b>	Tom Gerard



## 448 MAIN STREET, KENTVILLE

<b>Size</b>	13,145 sf	<b>Details</b>	10,000 sf office, 1,800 sf warehouse, 1,200 sf garage + basement.
<b>Price</b>	\$1,390,000	<b>Agent(s)</b>	Bill Denyar



## 2470 MAYNARD STREET, HALIFAX

<b>Size</b>	1,277 sf	<b>Details</b>	Commercial/Industrial building on corner lot, zoned C-2, 16' ceiling height.
<b>Price</b>	\$525,000	<b>Agent(s)</b>	Mat Houston   Tom Gerard

## COMMERCIAL / RETAIL SPACE FOR SALE

Click on a property photo to obtain further information online



### 6980 CHEBUCTO ROAD, **HALIFAX**

<b>Size</b>	1,555 sf	<b>Details</b>	2 storey mixed use commercial/residential with on-site parking for 6 cars.
<b>Price</b>	\$439,000	<b>Agent(s)</b>	Mat Houston   Tom Gerard



### 8826 COMMERCIAL STREET, **NEW MINAS**

<b>Size</b>	19,681 sf	<b>Details</b>	Building & bowling business for sale on 1.76 acre lot; in retail district.
<b>Price</b>	\$825,000	<b>Agent(s)</b>	Robert Jennings



### 4155 HIGHWAY 3, **CHESTER**

<b>Size</b>	2,500 sf	<b>Details</b>	Coin operated self wash with revenue of \$60,000 annually on 1.1 acres.
<b>Price</b>	\$329,000	<b>Agent(s)</b>	Robert Jennings

# INVESTMENT PROPERTIES FOR SALE

Click on a property photo to obtain further information online



## 4155 HIGHWAY 3, CHESTER

<b>Size</b>	2,500 sf	<b>Details</b>	Coin operated self wash with revenue of \$60,000 annually on 1.1 acres.
<b>Price</b>	\$329,000	<b>Agent(s)</b>	Robert Jennings



## CAUSEWAY CENTRE, 22 HWY #330, BARRINGTON PASSAGE

<b>Size</b>	15,291 sf	<b>Details</b>	Anchored by Shoppers Drug Mart & Subway, next to Tim Horton's.
<b>Price</b>	\$905,600	<b>Agent(s)</b>	Tom Gerard   Mat Houston



## ANTHONY MALL, 3723 HWY #3, BARRINGTON PASSAGE

<b>Size</b>	13,842 sf	<b>Details</b>	Single level retail strip, adjacent to Causeway Centre & Tim Horton's.
<b>Price</b>	\$344,600	<b>Agent(s)</b>	Tom Gerard   Mat Houston



## 130 & 140 NORTH AVENUE, NEW GLASGOW

<b>Size</b>	24 Units	<b>Details</b>	2 x 12 unit garden style apartment buildings located in New Glasgow.
<b>Price</b>	\$1,440,000	<b>Agent(s)</b>	Tom Gerard



## 22 & 24 MARIE STREET, STELLARTON

<b>Size</b>	18 Units	<b>Details</b>	2 X 9 unit townhouse style apartment buildings located in Stellarton.
<b>Price</b>	\$1,230,000	<b>Agent(s)</b>	Tom Gerard



## THE SHOPS AT MILLS, 5486 SPRING GARDEN ROAD, HALIFAX

<b>Size</b>	26,651 sf	<b>Details</b>	Development opportunity for 8 storey mixed use building, 4 PID numbers.
<b>Price</b>	Please Contact	<b>Agent(s)</b>	Steven Dexter   Tom Gerard



# HOTEL PROPERTIES FOR SALE

Click on a property photo to obtain further information online



## NEW, THE VALLEY INN, WENTWORTH VALLEY

<b>Size</b>	7,436 sf on 5.92 acres	<b>Details</b>	15 room motel, restaurant, 70+ seat pub/lounge close to Ski Wentworth.
<b>Price</b>	\$475,000 + HST	<b>Agent(s)</b>	Andrew Belliveau   James Boudreau, CA



## DAYS INN – 480 KINGS ROAD, SYDNEY

<b>Size</b>	Please Contact	<b>Details</b>	Attractive waterfront site on Sydney Harbour, revenue upside.
<b>Price</b>	Please Contact	<b>Agent(s)</b>	Bill MacAvoy



## DAYS INN – 20 HIGHFIELD PARK DRIVE, DARTMOUTH

<b>Size</b>	Please Contact	<b>Details</b>	Strategic location, and nationally branded. Significant upside potential.
<b>Price</b>	Please Contact	<b>Agent(s)</b>	Bill MacAvoy

# LAND FOR SALE

Click on a property photo to obtain further information online



## HOBSONS LAKE DRIVE, **HALIFAX**

<b>Size</b>	7.5 acres	<b>Details</b>	Build up to 180,000 square feet of office space, as-of-right.
<b>Price</b>	\$4,925,000	<b>Agent(s)</b>	<b>Brian Woods   Tom Gerard</b>



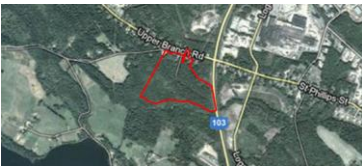
## 6 HAMSHAW DRIVE (CORNER OF KEARNEY LAKE RD.), **HALIFAX**

<b>Size</b>	+/- 1 acre (43,560 sf)	<b>Details</b>	Potential re-development opportunity, Kearney Lake frontage.
<b>Price</b>	\$425,000	<b>Agent(s)</b>	<b>Brian Woods</b>



## 390 WINDMILL ROAD, **DARTMOUTH**

<b>Size</b>	+/- 20,000 sf	<b>Details</b>	Corner of Windmill Rd. & Fernhill Dr., potential to build 8,000 sf bldg.
<b>Price</b>	\$350,000	<b>Agent(s)</b>	<b>Brian Woods</b>



## UPPER BRANCH ROAD, **BRIDGEWATER**

<b>Size</b>	Approx 33 acres	<b>Details</b>	Visible exposure to Highway 103, no zone restrictions in place.
<b>Price</b>	\$389,000	<b>Agent(s)</b>	<b>Robert Jennings</b>

# LAND FOR SALE

Click on a property photo to obtain further information online



## 8410 ST. MARGARETS BAY ROAD, BLACK POINT

Size	+/- 5,000 sf	Details	180' of ocean frontage, 1.14 acres, 10 unit motel & 3 cottages on-site.
Price	\$215,000	Agent(s)	Tom Gerard   Mat Houston



## BEECH HILL ROAD, ANTIGONISH

Size	Over 12 acres	Details	Commercially zoned land adjacent to the new divided highway.
Price	\$1,400,000	Agent(s)	Robert Jennings



## CAPE BRETON LAND, LOUISBURG

Size	3,000 Acres	Details	Development land 1.5 KM from Louisburg, 30 minutes from Sydney Airport.
Price	Please Contact	Agent(s)	Bill MacAvoy



## BISSETT LAKE ROAD, EASTERN PASSAGE

Size	Approx 70 acres	Details	Development potential, over 15 acres cleared space, lake frontage.
Price	\$950,000	Agent(s)	Robert Jennings



## 4 FRENCH VILLAGE STATION ROAD, TANTALLON

Size	Approx 2.5 acres	Details	Multi-Use Zoning, great corner lot with lots of exposure.
Price	\$575,000	Agent(s)	Jamie Ferguson



## WEST BEDFORD DEVELOPMENT, BEDFORD

Size	5.9 acres	Details	Highly visible retail development site across from 4 pad arena. Sub-dividable.
Price	\$3,842,209   \$14.95 psf	Agent(s)	Steven Dexter

## SOLD / LEASED PROPERTIES

Click on a property photo to obtain further information online



### LEASED, 11 MORRIS DRIVE, DARTMOUTH

<b>Size</b>	2,613 sf	<b>Details</b>	For sublet until Apr 30, 2017; includes 1,000 sf office space.
<b>Price</b>	\$6.25 psf Net	<b>Agent(s)</b>	Phil Bolhuis



### LEASED, 733 PRINCE STREET, TRURO

<b>Size</b>	4,000 sf	<b>Details</b>	On-site parking, new HVAC & ceiling, walking distance to amenities.
<b>Price</b>	\$25.00 psf Gross	<b>Agent(s)</b>	Andrew Belliveau



### LEASED, 1521 GRAFTON STREET, HALIFAX

<b>Size</b>	780 sf	<b>Details</b>	Third floor office/studio space, character building with 14' ceilings.
<b>Price</b>	\$21.00 psf Gross	<b>Agent(s)</b>	Tom Gerard   Mat Houston



### SOLD, BUCKLEY'S BUILDING, 1669 BARRINGTON STREET, HALIFAX

<b>Size</b>	3,024 sf	<b>Details</b>	24' of Barrington St. frontage, ground floor commercial + 2 apartments.
<b>Price</b>	\$995,000	<b>Agent(s)</b>	Mat Houston   Tom Gerard



For a complete list of all our available properties please visit us online at:  
**[www.cwatlantic.com](http://www.cwatlantic.com)**



**Andrew Belliveau**  
Commercial Sales & Leasing  
902.482.2998 Direct  
902.488.8886 Mobile  
902.425.7374 Fax  
[abelliveau@cwatlantic.com](mailto:abelliveau@cwatlantic.com)



**Phil Bolhuis**  
Industrial Sales & Leasing  
902.425.5887 Direct  
902.293.4524 Mobile  
902.425.7374 Fax  
[pbolhuis@cwatlantic.com](mailto:pbolhuis@cwatlantic.com)



**James Boudreau, CA**  
Commercial Sales & Leasing  
902.482.1767 Direct  
902.456.1126 Mobile  
902.425.7374 Fax  
[jboudreau@cwatlantic.com](mailto:jboudreau@cwatlantic.com)



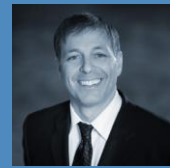
**Bill Denyar**  
Commercial Sales & Leasing  
902.698.2207 Mobile  
902.425.7374 Fax  
[bdenyar@cwatlantic.com](mailto:bdenyar@cwatlantic.com)



**Steven Dexter**  
Commercial Sales & Leasing  
902.425.0377 Direct  
902.222.2399 Mobile  
902.425.7374 Fax  
[sdexter@cwatlantic.com](mailto:sdexter@cwatlantic.com)



**Jamie Ferguson**  
Commercial Sales & Leasing  
902.425.4009 Direct  
902.209.5123 Mobile  
902.425.7374 Fax  
[jferguson@cwatlantic.com](mailto:jferguson@cwatlantic.com)



**Tom Gerard, CCIM, SIOR**  
Income & Investment Real Estate  
902.425.1303 Direct  
902.830.1318 Mobile  
902.422.0327 Fax  
[tgerard@cwatlantic.com](mailto:tgerard@cwatlantic.com)



**Mat Houston**  
Commercial Sales & Leasing  
902.425.8446 Direct  
902.412.2940 Mobile  
902.425.7374 Fax  
[mhouston@cwatlantic.com](mailto:mhouston@cwatlantic.com)



**Robert Jennings**  
Commercial Sales & Leasing  
902.425.2512 Direct  
902.830.8863 Mobile  
902.425.7374 Fax  
[rjennings@cwatlantic.com](mailto:rjennings@cwatlantic.com)



**Bill MacAvoy**  
Managing Director  
902.425.1872 Direct  
902.880.0445 Mobile  
902.425.7374 Fax  
[bmacavoy@cwatlantic.com](mailto:bmacavoy@cwatlantic.com)



**Brian Woods**  
Commercial Sales & Leasing  
902.422.1321 Direct  
902.830.5060 Mobile  
902.425.7374 Fax  
[bwoods@cwatlantic.com](mailto:bwoods@cwatlantic.com)



**Christopher Tanner**  
Valuation & Advisory Services  
902.482.2829 Direct  
902.425.7374 Fax  
[christopher.tanner@ca.cushwake.com](mailto:christopher.tanner@ca.cushwake.com)