

# C&WA MONTHLY LISTINGS REPORT

HALIFAX & SURROUNDING AREA

APRIL 2014

# OFFICE SPACE FOR LEASE

Click on a property photo to obtain further information online



## NEW, 942 COLE HARBOUR ROAD, DARTMOUTH

Size	2,480 sf	Details	Former Century 21 Trident office, ground floor, great exposure & visibility.
Price	\$15.00 psf Net	Agent(s)	Tom Gerard   Mat Houston



## NEW, 7907 HIGHWAY 7, MUSQUODOBOIT HARBOUR

Size	1,400 sf	Details	Former tanning salon located in high traffic plaza next to RBC & pharmacy.
Price	\$15.00 psf Semi-Gross	Agent(s)	Tom Gerard   Mat Houston



## 972 COLE HARBOUR ROAD, DARTMOUTH

Size	2,100 sf	Details	Great exposure, with signage opportunity in retail node in Cole Harbour.
Price	\$15.00 psf Net	Agent(s)	Tom Gerard   Mat Houston



## 2830 AGRICOLA STREET, HALIFAX

Size	2,400 sf	Details	Air-conditioned office space with modern finishes in Halifax's North End.
Price	\$15.00 psf Net	Agent(s)	Tom Gerard   Mat Houston



## 65 THORNHILL DRIVE, DARTMOUTH

Size	1,000 & 1,500 sf	Details	1 <sup>st</sup> floor & 2 <sup>nd</sup> floor office space. Available immediately.
Price	\$12.00 psf Gross	Agent(s)	Tom Gerard   Phil Bolhuis



## 6009 QUINPOOL ROAD, HALIFAX

Size	2,250 sf sublet	Details	5 offices, conference room, open area, storage room and kitchenette.
Price	\$21.65 psf Gross	Agent(s)	Brian Woods   Mat Houston



# OFFICE SPACE FOR LEASE

Click on a property photo to obtain further information online



## 26 UNION STREET, BEDFORD

<b>Size</b>	+/- 10,000 sf	<b>Details</b>	2 level office bldg with 90 surface parking stalls, available immediately.
<b>Price</b>	\$12.00 psf Net	<b>Agent(s)</b>	Brian Woods



## ST. LAWRENCE PLACE, HALIFAX

<b>Size</b>	3,500 sf	<b>Details</b>	New construction Class A office space. Available Immediately.
<b>Price</b>	Please contact	<b>Agent(s)</b>	Andrew Belliveau   Mat Houston



## 18 ACADIA STREET, HALIFAX

<b>Size</b>	768, 1,805 & 2,572 sf	<b>Details</b>	2,572 sf 1 <sup>st</sup> floor finished space, 1,805 sf 3 <sup>rd</sup> floor raw space.
<b>Price</b>	Starts at \$11.50 psf Net	<b>Agent(s)</b>	Steven Dexter



## 1657 BEDFORD ROW, HALIFAX

<b>Size</b>	7,200 sf	<b>Details</b>	Halifax harbour views, large 2 <sup>nd</sup> floor space, flexible for many uses.
<b>Price</b>	\$12.00 psf Net	<b>Agent(s)</b>	Michael Brown



## 98 WILLIAMS AVENUE, DARTMOUTH

<b>Size</b>	3,500 sf	<b>Details</b>	3 private offices, open area, warehouse space and washrooms.
<b>Price</b>	\$21.00 psf Gross	<b>Agent(s)</b>	Tom Gerard   Phil Bolhuis



## 5992 SPRING GARDEN ROAD, HALIFAX

<b>Size</b>	1,300 sf	<b>Details</b>	2 <sup>nd</sup> floor private office space for lease, power and communications extra.
<b>Price</b>	\$ 1,700 / month	<b>Agent(s)</b>	Brian Woods

# OFFICE SPACE FOR LEASE

Click on a property photo to obtain further information online



## 733 PRINCE STREET, TRURO

<b>Size</b>	5,800 sf	<b>Details</b>	Onsite parking, new HVAC & ceiling, walking distance to amenities.
<b>Price</b>	\$25.00 psf Gross	<b>Agent(s)</b>	Andrew Belliveau



## 1 RALSTON AVENUE, DARTMOUTH

<b>Size</b>	10,000 sf	<b>Details</b>	Reception, 26 offices, boardroom, kitchen, washrooms & open area.
<b>Price</b>	\$14.00 psf Net	<b>Agent(s)</b>	Tom Gerard   Mat Houston   Phil Bolhuis



## 73 TACOMA DRIVE, DARTMOUTH

<b>Size</b>	Up to 17,000 sf	<b>Details</b>	754 – 17,000 sf available (5,441 sf floor plate/9 storey tower). Parking.
<b>Price</b>	\$8.00 psf Net	<b>Agent(s)</b>	Mat Houston   Robert Jennings



## HOBSON'S LAKE DRIVE, HALIFAX

<b>Size</b>	Up to 19,000 sf per fl	<b>Details</b>	Office / retail development. Now pre-leasing. Fall 2014 occupancy.
<b>Price</b>	\$18.00 psf Net	<b>Agent(s)</b>	Brian Woods



## 170 OCHTERLONEY STREET, DARTMOUTH

<b>Size</b>	1,500 sf	<b>Details</b>	7 offices, 2 washrooms, reception and full kitchen with onsite parking.
<b>Price</b>	\$2,500/mo + expenses	<b>Agent(s)</b>	Robert Jennings



## 6112 QUINPOOL ROAD, HALIFAX

<b>Size</b>	1,800 sf	<b>Details</b>	2 <sup>nd</sup> level office space, onsite parking, central location. Flexible & short-term.
<b>Price</b>	\$25.00 psf Gross	<b>Agent(s)</b>	Steven Dexter   Mat Houston

# OFFICE SPACE FOR LEASE

Click on a property photo to obtain further information online



## 219 WAVERLY ROAD, DARTMOUTH

<b>Size</b>	15,870 sf	<b>Details</b>	2 storey office & retail redevelopment, available Spring 2014.
<b>Price</b>	\$12.00 psf Net	<b>Agent(s)</b>	Mat Houston   Brian Woods



## 30 DUKE STREET, TRURO

<b>Size</b>	2,400 sf	<b>Details</b>	Renovated in 2008, heat & lights included, free parking.
<b>Price</b>	\$21.00 psf Gross	<b>Agent(s)</b>	Robert Jennings



## 2625 JOSEPH HOWE DRIVE, HALIFAX

<b>Size</b>	1,401 & 316 sf	<b>Details</b>	Rent includes utilities and cleaning, walking distance to amenities.
<b>Price</b>	\$14.50 psf Net	<b>Agent(s)</b>	Steven Dexter   Mat Houston



## 66 WRIGHT AVENUE, DARTMOUTH

<b>Size</b>	1,733 sf	<b>Details</b>	2 <sup>nd</sup> floor air conditioned office space offers high visibility.
<b>Price</b>	\$20.00 psf Gross	<b>Agent(s)</b>	Mat Houston   Phil Bolhuis



## 349 HERRING COVE ROAD, HALIFAX

<b>Size</b>	1,500, & 2,318 sf	<b>Details</b>	3 suites total (office & retail): 1,500/1,899/2,318 sf - Exterior signage, parking.
<b>Price</b>	\$10.00 psf Net	<b>Agent(s)</b>	Tom Gerard   Mat Houston



## 3260 BARRINGTON STREET, HALIFAX

<b>Size</b>	1,080 sf	<b>Details</b>	Reception area, meeting room, 3 private offices, lunchroom & more.
<b>Price</b>	\$17.00 psf Net	<b>Agent(s)</b>	Brian Woods

# OFFICE SPACE FOR LEASE

Click on a property photo to obtain further information online



## 211 HORSESHOE LAKE DRIVE, **HALIFAX**

<b>Size</b>	Up to 19,000 sf	<b>Details</b>	Available now, ample parking, T.I.'s negotiable, outdoor common area.
<b>Price</b>	\$12.00 psf Net	<b>Agent(s)</b>	<b>Brian Woods</b>



## 568A PRINCE STREET, **TRURO**

<b>Size</b>	1,000 sf	<b>Details</b>	Office or retail space for sub-lease, ground floor, street level, high visibility.
<b>Price</b>	\$1,700 / mo. (utilities inc)	<b>Agent(s)</b>	<b>Robert Jennings</b>



## 1505 BARRINGTON STREET, **HALIFAX**

<b>Size</b>	10,125 sf	<b>Details</b>	Sublet, open concept, 7 private offices, boardroom & kitchenette.
<b>Price</b>	Negotiable	<b>Agent(s)</b>	<b>Tom Gerard   Mat Houston</b>



## 4 VIDITO DRIVE, **DARTMOUTH**

<b>Size</b>	10,000 & 1,500 sf	<b>Details</b>	Reception, 20+ offices, large boardroom, open areas & storage.
<b>Price</b>	\$10.00 psf Net	<b>Agent(s)</b>	<b>Tom Gerard   Phil Bolhuis</b>



## 249 BEDFORD HIGHWAY, **HALIFAX**

<b>Size</b>	2,120 sf	<b>Details</b>	Views of Bedford Basin, great exposure, storage, new windows/siding .
<b>Price</b>	\$12.22 psf Semi-Gross	<b>Agent(s)</b>	<b>Brian Woods</b>



## 480 PARKLAND DRIVE, **HALIFAX**

<b>Size</b>	500 sf - 4,097 sf	<b>Details</b>	High exposure, signage opportunity, elevator, immaculate premises.
<b>Price</b>	\$13.00 psf Net	<b>Agent(s)</b>	<b>Tom Gerard   Mat Houston</b>

# OFFICE SPACE FOR LEASE

Click on a property photo to obtain further information online



## THE AVELLA, 827 BEDFORD HIGHWAY, **BEDFORD**

Size	Up to 10,923 sf	Details	Sub-dividable units available, Waterfront view, available Fall 2014.
Price	\$18.00 psf Net	Agent(s)	<a href="#">Tom Gerard</a>   <a href="#">Mat Houston</a>



## 1521 GRAFTON STREET, **HALIFAX**

Size	780 sf	Details	Third floor office/studio space, character building with 14' ceilings.
Price	\$21.00 psf Gross	Agent(s)	<a href="#">Tom Gerard</a>   <a href="#">Mat Houston</a>



# INDUSTRIAL SPACE FOR LEASE

Click on a property photo to obtain further information online



## NEW, 133 JOHN SAVAGE AVENUE, DARTMOUTH

<b>Size</b>	28,464 sf	<b>Details</b>	28' clear ceilings, 6 dock loading doors, 100% warehouse space.
<b>Price</b>	\$15.00 psf Gross	<b>Agent(s)</b>	Tom Gerard   Phil Bolhuis



## 118 CUTLER AVENUE, DARTMOUTH

<b>Size</b>	Up to 17,740 sf	<b>Details</b>	20' clear ceilings, 5 dock loading doors, 2 units available 8,863 sf + 8,877 sf.
<b>Price</b>	\$8.00 psf Net	<b>Agent(s)</b>	Tom Gerard   Phil Bolhuis



## 11 ACADIA STREET, DARTMOUTH

<b>Size</b>	23,750 sf	<b>Details</b>	14' clear ceiling height, 3 grade & 1 dock loading doors. Upgraded electrical.
<b>Price</b>	\$7.00 psf Net	<b>Agent(s)</b>	Michael Brown   Tom Gerard   Phil Bolhuis



## 43 FIELDING AVENUE, DARTMOUTH

<b>Size</b>	17,203 sf	<b>Details</b>	Industrial warehouse facility for sale or lease in Burnside Business Park.
<b>Price</b>	\$8.00 psf Net	<b>Agent(s)</b>	Michael Brown



## 53 & 93 MEMORIAL DRIVE, NORTH SYDNEY

<b>Size</b>	Up to 167,372 sf	<b>Details</b>	Excellent location 3 blocks from Port of Sydney. Min 24' clear ceilings.
<b>Price</b>	\$4.50 psf Net	<b>Agent(s)</b>	Steven Dexter



## GRASSY BROOK PLACE, 171 JOHN SAVAGE AVENUE, DARTMOUTH

<b>Size</b>	Up to 25,000 sf	<b>Details</b>	New construction, bay size 6,250 sf, 28' ceiling height, available Q3 2014.
<b>Price</b>	\$9.75 psf NNN	<b>Agent(s)</b>	Bill MacAvoy



# INDUSTRIAL SPACE FOR LEASE

Click on a property photo to obtain further information online



## 170 THORNHILL DRIVE, DARTMOUTH

<b>Size</b>	38,758 sf	<b>Details</b>	Located in Burnside Ind. Park. Includes office & warehouse space.
<b>Price</b>	\$6.00 psf Net	<b>Agent(s)</b>	Tom Gerard   Phil Bolhuis



## 44 ORION COURT, DARTMOUTH

<b>Size</b>	5,500 sf	<b>Details</b>	New build in Woodside; 20' clear ceiling height, grade loading.
<b>Price</b>	\$8.00 psf Net	<b>Agent(s)</b>	Tom Gerard   Phil Bolhuis



## 11 MORRIS DRIVE, DARTMOUTH

<b>Size</b>	2,613 sf	<b>Details</b>	For sublet until Apr 30, 2017; includes 1,000 sf office space.
<b>Price</b>	\$6.25 psf Net	<b>Agent(s)</b>	Phil Bolhuis



## 161 LIVELY ROAD, MIDDLE SACKVILLE

<b>Size</b>	Up to 3,920 sf (2 units)	<b>Details</b>	Newly constructed commercial bldg, 15' ceiling height, loading doors.
<b>Price</b>	\$1,650 + HST per month	<b>Agent(s)</b>	Phil Bolhuis



## 49 PETTIPAS DRIVE, DARTMOUTH

<b>Size</b>	4 units of 1,440 sf	<b>Details</b>	3 grade loading doors (12'x10'), 14' ceiling height, onsite parking.
<b>Price</b>	\$7.50 psf Net	<b>Agent(s)</b>	Tom Gerard   Phil Bolhuis



## NEW PRICE, 20 ROSEDALE DRIVE, DARTMOUTH

<b>Size</b>	4,200 sf	<b>Details</b>	3,000 sf warehouse space, 1,200 sf office space for lease.
<b>Price</b>	\$10.00 psf Semi-Gross + elec.	<b>Agent(s)</b>	Phil Bolhuis

# INDUSTRIAL SPACE FOR LEASE

Click on a property photo to obtain further information online



## 38-40 FIELDING AVENUE, DARTMOUTH

<b>Size</b>	5,651 sf	<b>Details</b>	3,844 sf warehouse space & 1,807 sf office space in Burnside.
<b>Price</b>	\$15.00 psf Gross	<b>Agent(s)</b>	Tom Gerard   Phil Bolhuis



## 180 THORNHILL DRIVE, DARTMOUTH

<b>Size</b>	70,000 sf	<b>Details</b>	Located in Burnside Ind. Park. Includes office & warehouse space.
<b>Price</b>	\$8.00 psf Semi-Gross	<b>Agent(s)</b>	Tom Gerard   Phil Bolhuis



## 521 WINDMILL ROAD, DARTMOUTH

<b>Size</b>	3,000 sf	<b>Details</b>	2 storey single tenant office & workshop.
<b>Price</b>	\$2,500/mo Semi-Gross	<b>Agent(s)</b>	Tom Gerard   Phil Bolhuis



## 250 NORTH STREET, BRIDGEWATER

<b>Size</b>	4,000 sf	<b>Details</b>	Freestanding Industrial building for short term sublet, free parking on-site.
<b>Price</b>	\$11.60 psf Net	<b>Agent(s)</b>	Tom Gerard   Phil Bolhuis

# COMMERCIAL / RETAIL SPACE FOR LEASE

Click on a property photo to obtain further information online



## NEW, 942 COLE HARBOUR ROAD, DARTMOUTH

Size	2,480 sf	Details	Former Century 21 Trident office, ground floor, great exposure & visibility.
Price	\$15.00 psf Net	Agent(s)	Tom Gerard   Mat Houston



## NEW, 7907 HIGHWAY 7, MUSQUODOBOIT HARBOUR

Size	1,400 sf	Details	Former tanning salon located in high traffic plaza next to RBC & pharmacy.
Price	\$15.00 psf Semi-Gross	Agent(s)	Tom Gerard   Mat Houston



## 972 COLE HARBOUR ROAD, DARTMOUTH

Size	2,100sf	Details	Great exposure, with signage opportunity in retail node in Cole Harbour.
Price	\$15.00 psf Net	Agent(s)	Tom Gerard   Mat Houston



## 249 WAVERLY ROAD, DARTMOUTH

Size	680 sf	Details	Open concept, onsite parking, exterior signage, no food sale uses.
Price	\$17.00 psf Net	Agent(s)	Robert Jennings   Michael Brown



## 1668 LOWER WATER STREET, HALIFAX

Size	10,500 sf	Details	Ideal downtown location, 2 free exterior parking spots, can be divided.
Price	\$18.50 psf Semi-Gross	Agent(s)	Michael Brown



## HOBSON'S LAKE DRIVE, HALIFAX

Size	Up to 19,000 sf per fl	Details	Office / retail development, now pre-leasing. Fall 2014 occupancy.
Price	\$20.00 psf Net	Agent(s)	Brian Woods



# COMMERCIAL / RETAIL SPACE FOR LEASE

Click on a property photo to obtain further information online



## 266 BEDFORD HIGHWAY, **HALIFAX**

<b>Size</b>	7,000 sf	<b>Details</b>	20+ paved parking spaces, natural gas heat, double man loading door.
<b>Price</b>	\$9.75 psf Net	<b>Agent(s)</b>	<b>Brian Woods</b>



## 590 PORTLAND STREET, **DARTMOUTH**

<b>Size</b>	Various	<b>Details</b>	Onsite parking, up to 7,318 sf contiguous, great exposure, signage.
<b>Price</b>	\$15.00 psf Net	<b>Agent(s)</b>	<b>Robert Jennings</b>



## NOTTING VILLAGE (CORNER OF WYSE RD. & BOLAND RD.), **DARTMOUTH**

<b>Size</b>	1,500 sf	<b>Details</b>	Office/retail ground level space. Excellent signage & corner exposure.
<b>Price</b>	\$15.00 psf NNN	<b>Agent(s)</b>	<b>Robert Jennings</b>



## 6100 YOUNG STREET, **HALIFAX**

<b>Size</b>	+/- 70,000 sf	<b>Details</b>	Proposed development, +/- 30,000 sf retail, & +/- 40,000 office.
<b>Price</b>	Please contact	<b>Agent(s)</b>	<b>Jamie Ferguson</b>



## THE AVELLA, 827 BEDFORD HIGHWAY, **BEDFORD**

<b>Size</b>	11,025 sf	<b>Details</b>	Bedford Waterfront, approx. 20,000 traffic count daily, available Fall 2014.
<b>Price</b>	\$22.00 psf Net	<b>Agent(s)</b>	<b>Tom Gerard   Mat Houston</b>



## 211 PLEASANT STREET, **DARTMOUTH**

<b>Size</b>	20,000 & 2,500 sf	<b>Details</b>	Former Grocery/Retail premises. Large paved parking area.
<b>Price</b>	Negotiable	<b>Agent(s)</b>	<b>Michael Brown   Mat Houston</b>

# COMMERCIAL / RETAIL SPACE FOR LEASE

Click on a property photo to obtain further information online



## 26 BANCROFT DRIVE, DARTMOUTH

Size	1,700 sf	Details	Formerly Esso Home Comfort, free onsite parking, high traffic location.
Price	\$17.50 psf Net	Agent(s)	Michael Brown



## 219 WAVERLY ROAD, DARTMOUTH

Size	6,408 sf	Details	2 storey office & retail redevelopment, available Spring 2014.
Price	\$18.00 Net PSF	Agent(s)	Mat Houston   Brian Woods



## GRASSY BROOK PLACE, 171 JOHN SAVAGE AVENUE, DARTMOUTH

Size	Up to 25,000 sf	Details	New construction, bay size 6,250 sf, 28' ceiling height, available Q3 2014.
Price	\$9.75 psf NNN	Agent(s)	Bill MacAvoy



## 349 HERRING COVE ROAD, HALIFAX

Size	1,899 sf	Details	Exterior signage opportunity, landlord will create new storefront.
Price	\$12.00 psf Net (Retail)	Agent(s)	Tom Gerard   Mat Houston



## 6 LOUISE STREET, TRURO

Size	6,500 sf	Details	38 paved parking spaces, 8'x8' overhead door, available immediately.
Price	\$7.95 psf Gross	Agent(s)	Tom Gerard   Brian Woods



## 255 BEDFORD HIGHWAY, HALIFAX

Size	2,030 sf	Details	Views of Bedford Basin, highway exposure, natural gas, showroom.
Price	\$14.50 psf Net	Agent(s)	Brian Woods

# COMMERCIAL / RETAIL SPACE FOR LEASE

Click on a property photo to obtain further information online



## ST. LAWRENCE PLACE, HALIFAX

<b>Size</b>	951 sf remaining	<b>Details</b>	New construction high profile, ground floor retail space. Available now.
<b>Price</b>	Please contact	<b>Agent(s)</b>	Andrew Belliveau   Mat Houston



## 70 GARY MARTIN DRIVE, BEDFORD

<b>Size</b>	Up to 6,500 sf	<b>Details</b>	Ground floor commercial in brand new residential complex, Bedford West.
<b>Price</b>	\$20.00 psf Net	<b>Agent(s)</b>	Tom Gerard   Mat Houston



## 530 HAMMONDS PLAINS ROAD, HALIFAX

<b>Size</b>	Up to 9,000 sf	<b>Details</b>	Showroom, office, and warehouse space, mezzanine storage, parking on-site.
<b>Price</b>	\$13.00 psf Net	<b>Agent(s)</b>	Brian Woods



# LAND FOR LEASE

Click on a property photo to obtain further information online



## NEW, 3664 JOSEPH HOWE DRIVE, HALIFAX

<b>Size</b>	24,568 sf	<b>Details</b>	Former Petro-Canada site on high traffic Joseph Howe Drive.
<b>Price</b>	Negotiable	<b>Agent(s)</b>	<a href="#">Tom Gerard</a>   <a href="#">Phil Bolhuis</a>



## 89 JOSEPH ZATZMAN DRIVE, DARTMOUTH

<b>Size</b>	Up to 40,000 sf	<b>Details</b>	Fenced and secure yard storage for lease.
<b>Price</b>	\$2.00 psf Gross	<b>Agent(s)</b>	<a href="#">Phil Bolhuis</a>   <a href="#">Tom Gerard</a>



## 590-600 WINDMILL ROAD, DARTMOUTH

<b>Size</b>	2.3 acres	<b>Details</b>	Demisable 10,000 sf – 100,000 sf, gravel graded yard storage.
<b>Price</b>	\$2.00 psf Semi-Gross	<b>Agent(s)</b>	<a href="#">Tom Gerard</a>   <a href="#">Phil Bolhuis</a>

# OFFICE SPACE FOR SALE

Click on a property photo to obtain further information online



## 3556 DUTCH VILLAGE ROAD, **HALIFAX**

Size	2,925 sf	Details	Great exposure, signage opportunity, 9 private offices, parking for 7 cars.
Price	\$585,000	Agent(s)	<a href="#">Robert Jennings</a>   <a href="#">Michael Brown</a>



## 24 QUEEN STREET, **PORT HAWKESBURY**

Size	70,000 sf	Details	Former Minacs Call Centre; Class A leaseholds throughout.
Price	Please contact	Agent(s)	<a href="#">Tom Gerard</a>   <a href="#">Robert Jennings</a>



## 1 RALSTON AVENUE, **DARTMOUTH**

Size	10,000 sf	Details	Reception, 26 offices, boardroom, kitchen, washrooms & open area.
Price	\$1,995,000	Agent(s)	<a href="#">Tom Gerard</a>   <a href="#">Mat Houston</a>   <a href="#">Phil Bolhuis</a>

# INDUSTRIAL SPACE FOR SALE

Click on a property photo to obtain further information online



## NEW, 2470 MAYNARD STREET, HALIFAX

<b>Size</b>	1,277 sf	<b>Details</b>	Commercial/Industrial building on corner lot, zoned C-2, 16' ceiling height.
<b>Price</b>	\$525,000	<b>Agent(s)</b>	Mat Houston   Tom Gerard



## 43 FIELDING AVENUE, DARTMOUTH

<b>Size</b>	17,203 sf	<b>Details</b>	Industrial warehouse facility for sale or lease, in Burnside Business Park.
<b>Price</b>	\$1,495,000	<b>Agent(s)</b>	Michael Brown



## 11 ACADIA STREET, DARTMOUTH

<b>Size</b>	23,750 sf	<b>Details</b>	14' clear ceiling height, 3 grade & 1 dock loading doors. Upgraded electrical.
<b>Price</b>	\$1,795,000	<b>Agent(s)</b>	Michael Brown   Tom Gerard   Phil Bolhuis



## 38 JAMES BOYLE DRIVE, MOUNT UNIACKE

<b>Size</b>	6,651 sf	<b>Details</b>	5,400 sf warehouse with 1,251 sf office space on 2.88 acres of land.
<b>Price</b>	\$795,000	<b>Agent(s)</b>	Phil Bolhuis   Steven Dexter



## 5 COLFORD DRIVE, EAST CHEZZETCOOK

<b>Size</b>	5,000 sf + 1.45 Acres	<b>Details</b>	Located in Eastern Shore Ind. Park, former self-storage facility.
<b>Price</b>	\$275,000	<b>Agent(s)</b>	Tom Gerard   Mat Houston   Phil Bolhuis



## 521 WINDMILL ROAD, DARTMOUTH

<b>Size</b>	3,000 sf	<b>Details</b>	2 storey single tenant office & workshop.
<b>Price</b>	\$530,000	<b>Agent(s)</b>	Tom Gerard   Phil Bolhuis



# INDUSTRIAL SPACE FOR SALE

Click on a property photo to obtain further information online



## NEW PRICE, 40 TANTRAMAR CRESCENT, AMHERST

<b>Size</b>	30,402 sf	<b>Details</b>	Distribution warehouse within Amherst Ind. Park with 44 parking stalls.
<b>Price</b>	\$1,950,000	<b>Agent(s)</b>	Michael Brown   Tom Gerard



## 170 THORNHILL DRIVE, DARTMOUTH

<b>Size</b>	38,758 sf	<b>Details</b>	Located in Burnside Ind. Park. Includes office & warehouse space.
<b>Price</b>	\$2,950,000	<b>Agent(s)</b>	Tom Gerard   Phil Bolhuis



## 100 THORNHILL DRIVE, DARTMOUTH

<b>Size</b>	11,923 sf	<b>Details</b>	8 x 14'x14' grade doors, 1 x 6' x 9' grade door, 1.63 acre corner lot.
<b>Price</b>	\$1,400,000	<b>Agent(s)</b>	Michael Brown   Andrew Belliveau

# COMMERCIAL / RETAIL SPACE FOR SALE

Click on a property photo to obtain further information online



## NEW, 2470 MAYNARD STREET, HALIFAX

Size	1,277 sf	Details	Commercial/Industrial building on corner lot, zoned C-2, 16' ceiling height.
Price	\$525,000	Agent(s)	Mat Houston   Tom Gerard



## NEW, 8826 COMMERCIAL STREET, NEW MINAS

Size	19,681 sf	Details	Building & bowling business for sale on 1.76 acre lot; in retail district.
Price	\$825,000	Agent(s)	Michael Brown   Robert Jennings



## 8410 ST. MARGARETS BAY ROAD, BLACK POINT

Size	+/- 5,000 sf	Details	180' of ocean frontage, 1.14 acres, 10 unit motel & 3 cottages on-site.
Price	\$395,000	Agent(s)	Tom Gerard   Mat Houston



## 10 & 12 WEBSTER STREET, KENTVILLE

Size	32,835 sf	Details	Multi-tenant mixed-use commercial/office investment opportunity.
Price	\$2,800,000	Agent(s)	Tom Gerard



## 448 MAIN STREET, KENTVILLE

Size	13,145 sf	Details	10,000 sf office, 1,800 sf warehouse, 1,200 sf garage + basement.
Price	\$1,390,000	Agent(s)	Bill Denyar



## 8927 COMMERCIAL STREET, NEW MINAS

Size	28,710 sf	Details	Multi unit retail strip plaza with 0% vacancy, potential for expansion.
Price	Please contact	Agent(s)	Michael Brown

## COMMERCIAL / RETAIL SPACE FOR SALE

Click on a property photo to obtain further information online



### 3556 DUTCH VILLAGE ROAD, **HALIFAX**

<b>Size</b>	2,925 sf	<b>Details</b>	Great exposure, signage opportunity, 9 private offices, parking for 7 cars.
<b>Price</b>	\$585,000	<b>Agent(s)</b>	<b>Robert Jennings   Michael Brown</b>



### THE ROPE LOFT, **CHESTER**

<b>Size</b>	5,770 sf	<b>Details</b>	Own a piece of Chester's history, restaurant, marina & pub with residential.
<b>Price</b>	Please Contact	<b>Agent(s)</b>	<b>Bill MacAvoy</b>

# LAND FOR SALE

Click on a property photo to obtain further information online



## 8410 ST. MARGARETS BAY ROAD, BLACK POINT

<b>Size</b>	1.14 acres	<b>Details</b>	180' of ocean frontage, currently has 10 unit motel & 3 cottages on-site.
<b>Price</b>	Please Contact	<b>Agent(s)</b>	Tom Gerard   Mat Houston



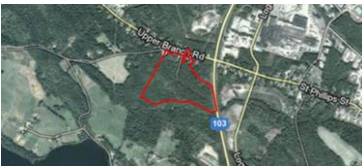
## NEW PRICE, JUBILEE ROAD, BRIDGEWATER

<b>Size</b>	7,470 square metres	<b>Details</b>	Multi-Family approved development site, pad ready & serviced.
<b>Price</b>	\$545,000	<b>Agent(s)</b>	Bill MacAvoy



## 390 WINDMILL ROAD, DARTMOUTH

<b>Size</b>	+/- 20,000 sf	<b>Details</b>	Corner of Windmill Rd. & Fernhill Dr., potential to build 8,000 sf bldg.
<b>Price</b>	\$350,000	<b>Agent(s)</b>	Brian Woods



## UPPER BRANCH ROAD, BRIDGEWATER

<b>Size</b>	Approx 33 acres	<b>Details</b>	Visible exposure to Highway 103, no zone restrictions in place.
<b>Price</b>	\$389,000	<b>Agent(s)</b>	Robert Jennings



## WEST BEDFORD DEVELOPMENT, BEDFORD

<b>Size</b>	5.9 acres	<b>Details</b>	Highly visible retail development site across from 4 pad arena. Sub-dividable.
<b>Price</b>	\$3,842,209   \$14.95 psf	<b>Agent(s)</b>	Steven Dexter



## BISSETT LAKE ROAD, EASTERN PASSAGE

<b>Size</b>	Approx 70 acres	<b>Details</b>	Development potential, over 15 acres cleared space, lake frontage.
<b>Price</b>	\$950,000	<b>Agent(s)</b>	Robert Jennings   Michael Brown



# LAND FOR SALE

Click on a property photo to obtain further information online



## 4 FRENCH VILLAGE STATION ROAD, TANTALLON

<b>Size</b>	Approx 2.5 acres	<b>Details</b>	Multi-Use Zoning, great corner lot with lots of exposure.
<b>Price</b>	\$575,000	<b>Agent(s)</b>	Jamie Ferguson



## LARRY UTECK LAND, BEDFORD

<b>Size</b>	15.2 acres	<b>Details</b>	Visible exposure to Highway 102, retailers could be open by June 2015.
<b>Price</b>	Please Contact	<b>Agent(s)</b>	Bill MacAvoy



## CAPE BRETON LAND, LOUISBURG

<b>Size</b>	3,000 Acres	<b>Details</b>	Development land 1.5 KM from Louisburg, 30 minutes from Sydney Airport.
<b>Price</b>	Please Contact	<b>Agent(s)</b>	Michael Brown



## BEECH HILL ROAD, ANTIGONISH

<b>Size</b>	Over 12 acres	<b>Details</b>	Commercially zoned land adjacent to the new divided highway.
<b>Price</b>	\$1,400,000	<b>Agent(s)</b>	Robert Jennings

## SOLD / LEASED PROPERTIES

Click on a property photo to obtain further information online



### LEASED, 33 THORNE AVENUE, DARTMOUTH

<b>Size</b>	1,500 sf	<b>Details</b>	3 offices, open areas, meeting room, staff break room & washroom.
<b>Price</b>	\$15.00 psf Net	<b>Agent(s)</b>	Tom Gerard   Phil Bolhuis



### SOLD, 31 MOUNT HOPE AVENUE, DARTMOUTH

<b>Size</b>	7,200 sf	<b>Details</b>	5,700 sf warehouse, 1,500 sf office; 25' height, 12'-18' grade doors.
<b>Price</b>	\$8.00 psf Net	<b>Agent(s)</b>	Tom Gerard   Phil Bolhuis



### UNDER AGREEMENT, 492-494 HERRING COVE ROAD, HALIFAX

<b>Size</b>	30,000 sf	<b>Details</b>	3 parcels of vacant, untouched land, ideal for multi-res development.
<b>Price</b>	\$250,000	<b>Agent(s)</b>	Michael Brown



### UNDER AGREEMENT, 6164 QUINPOOL ROAD, HALIFAX

<b>Size</b>	3,420 sf	<b>Details</b>	3 storey commercial bldg, excellent exposure, parking garage for 3.
<b>Price</b>	\$749,000	<b>Agent(s)</b>	Tom Gerard   Mat Houston



### UNDER AGREEMENT, 9 CRESTFIELD DRIVE & HAMMONDS PLAINS ROAD, HALIFAX

<b>Size</b>	5.32 acres	<b>Details</b>	Future development potential for seniors complex or assisted living.
<b>Price</b>	\$1,159,000	<b>Agent(s)</b>	Michael Brown



### UNDER AGREEMENT, 1714 ST. MARGARET'S BAY ROAD, HALIFAX

<b>Size</b>	12,242 sf; 4 acres	<b>Details</b>	4 buildings on 4 acres of land with ample parking onsite.
<b>Price</b>	\$1,450,000	<b>Agent(s)</b>	Michael Brown

## SOLD / LEASED PROPERTIES

Click on a property photo to obtain further information online



### UNDER AGREEMENT, 1274 HAMMONDS PLAINS ROAD, HALIFAX

<b>Size</b>	3,680 sf	<b>Details</b>	Currently operating as a church facility. Excellent condition.
<b>Price</b>	\$475,000	<b>Agent(s)</b>	Michael Brown



### UNDER AGREEMENT, 140 ILSLEY AVENUE, DARTMOUTH

<b>Size</b>	14,460 sf	<b>Details</b>	2 Buildings (10,510 sf & 3,950 sf), high exposure, showroom, warehouse.
<b>Price</b>	Please Contact	<b>Agent(s)</b>	Michael Brown   Phil Bolhuis

For a complete list of all our available properties please visit us online at  
[www.cwatlantic.com](http://www.cwatlantic.com)



**Andrew Belliveau**  
Commercial Sales & Leasing  
902.482.2998 Direct  
902.488.8886 Mobile  
902.425.7374 Fax  
[abelliveau@cwatlantic.com](mailto:abelliveau@cwatlantic.com)



**Phil Bolhuis**  
Commercial Sales & Leasing  
902.425.5887 Direct  
902.293.4524 Mobile  
902.425.7374 Fax  
[pbolhuis@cwatlantic.com](mailto:pbolhuis@cwatlantic.com)



**Michael Brown**  
Commercial Sales & Leasing  
902.482.1767 Direct  
902.229.6179 Mobile  
902.425.7374 Fax  
[mbrown@cwatlantic.com](mailto:mbrown@cwatlantic.com)



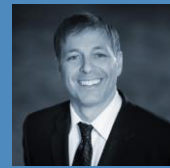
**Bill Denyar**  
Commercial Sales & Leasing  
902.698.2207 Mobile  
902.425.7374 Fax  
[bdenyar@cwatlantic.com](mailto:bdenyar@cwatlantic.com)



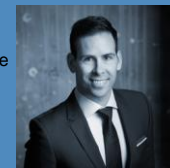
**Steven Dexter**  
Commercial Sales & Leasing  
902.425.0377 Direct  
902.222.2399 Mobile  
902.425.7374 Fax  
[sdexter@cwatlantic.com](mailto:sdexter@cwatlantic.com)



**Jamie Ferguson**  
Commercial Sales & Leasing  
902.425.4009 Direct  
902.209.5123 Mobile  
902.425.7374 Fax  
[jferguson@cwatlantic.com](mailto:jferguson@cwatlantic.com)



**Tom Gerard, CCIM, SIOR**  
Income & Investment Real Estate  
902.425.1303 Direct  
902.830.1318 Mobile  
902.422.0327 Fax  
[tgerard@cwatlantic.com](mailto:tgerard@cwatlantic.com)



**Mat Houston**  
Commercial Sales & Leasing  
902.425.8446 Direct  
902.412.2940 Mobile  
902.425.7374 Fax  
[mhouston@cwatlantic.com](mailto:mhouston@cwatlantic.com)



**Robert Jennings**  
Commercial Sales & Leasing  
902.425.2512 Direct  
902.830.8863 Mobile  
902.425.7374 Fax  
[rijennings@cwatlantic.com](mailto:rijennings@cwatlantic.com)



**Bill MacAvoy**  
Managing Director  
902.425.1872 Direct  
902.880.0445 Mobile  
902.425.7374 Fax  
[bmacavoy@cwatlantic.com](mailto:bmacavoy@cwatlantic.com)



**Brian Woods**  
Commercial Sales & Leasing  
902.422.1321 Direct  
902.830.5060 Mobile  
902.425.7374 Fax  
[bwoods@cwatlantic.com](mailto:bwoods@cwatlantic.com)