

results



talent



knowledge



Cushman & Wakefield Atlantic
Monthly Listings Report
Halifax, Nova Scotia Market

APRIL 2012





Office Space for Lease

CLICK ON A PROPERTY PHOTO TO OBTAIN FURTHER DETAILS

VISIT OUR WEBSITE AT WWW.CWEAST.COM

11 Thornhill Drive, DARTMOUTH



Size:	1,739 sq. ft. & 1,287sq. ft.	Details:	Ample onsite parking. Good exposure from high traffic intersection.
Price:	\$9.00 psf net	Listing Agent:	Michael Brown

6389 Coburg Road, HALIFAX



Size:	3,300 sq. ft.	Details:	Ground floor office space available April 1, 2012 on busy transit route.
Price:	\$20.00 psf gross - Sublet	Listing Agent:	Tom Gerard Mat Houston Phil Bolhuis

1526 Dresden Row, HALIFAX



Size:	Various suites, Up to 20,000 sq. ft.	Details:	Various office spaces located off Spring Garden Rd. with parking on site.
Price:	\$12.00 psf net	Listing Agent:	Tom Gerard Mat Houston Phil Bolhuis

211 Horseshoe Lake Drive, HALIFAX



Size:	1,500 sq. ft. – 23,000 sq. ft.	Details:	Available January 1, 2013. Ample, parking, T.I.'s negotiable, outdoor common area.
Price:	\$14.00 psf net	Listing Agent:	Brian Woods

5288 St. Margaret's Bay Road, HALIFAX



Size:	Various Suites	Details:	Former accounting office & former massage clinic. Leaseholds in place. Available NOW.
Price:	\$12.00 Net	Listing Agents:	Tom Gerard Mat Houston Phil Bolhuis

2830 Agricola Street, HALIFAX



Size:	2,350 sq. ft.	Details:	Newly renovated professional offices that are move-in-ready. Onsite parking available.
Price:	\$16.00 Semi-Gross psf	Listing Agent:	Tom Gerard Mat Houston Phil Bolhuis



Office Space for Lease

CLICK ON A PROPERTY PHOTO TO OBTAIN FURTHER DETAILS

VISIT OUR WEBSITE AT WWW.CWEAST.COM

1718 Argyle Street, HALIFAX



Size:	3,041 sq. ft.	Details:	Great downtown location! Sublet term expires December 31, 2013.
Price:	\$30.82	Listing Agents:	Michael Brown

5445 St. Margaret's Bay Road, HALIFAX



Size:	Up to 4,000 sq. ft.	Details:	Ground and second floor office space. Signage opportunity & parking.
Price:	\$14.00 - \$16.00 Net psf	Listing Agents:	Jamie Ferguson

111 Ilsley Avenue, DARTMOUTH



Size:	2,400 sq. ft.	Details:	Professional second floor office space in Burnside Industrial Park. Ample parking onsite.
Price:	\$14.00 net psf	Listing Agent:	Michael Brown

St. Lawrence Place, HALIFAX



Size:	24,800 sq. ft.	Details:	Pre-Leasing new construction Class A office space. Available Spring 2013.
Price:	Please contact for details	Listing Agents:	Andrew Belliveau

998 Parkland Drive, HALIFAX



Size:	3,266 sq. ft.	Details:	Second floor office space. Ample onsite parking. Good high traffic location & exposure.
Price:	\$15.00 net psf	Listing Agents:	Michael Brown

617 Windmill Road, HALIFAX



Size:	Up to 12,525 sq. ft.	Details:	Fully finished office space in 2 separate buildings
Price:	Please contact for details	Listing Agents:	Tom Gerard Mat Houston Phil Bolhuis



Office Space for Lease

3

CLICK ON A PROPERTY PHOTO TO OBTAIN FURTHER DETAILS

VISIT OUR WEBSITE AT WWW.CWEAST.COM

1657 Bedford Row, HALIFAX



Size: 7,200 sq. ft.	Details: Halifax Harbour views, large second floor space, could accommodate a number of uses.
Price: \$12.00 Net	Listing Agents: Michael Brown

1888 Brunswick Street, HALIFAX



Size: 2,887 sq. ft.	Details: Turnkey premises which includes boardroom, offices, server room, storage & kitchenette.
Price: \$17.75 Gross psf – Sublet	Listing Agent: Michael Brown Brian Woods

1521 Grafton Street, HALIFAX



Size: 2,032 sq. ft.	Details: 2 nd floor space; 6 offices/workrooms, reception and interior washroom. Parking available.
Price: \$18.00 Gross psf (utilities included)	Listing Agents: Tom Gerard Mat Houston Phil Bolhuis

Magazine Landing, BURNSIDE



Size: 16,000 sq. ft.	Details: Office / retail development off Windmill Road. Now pre-leasing. Fall 2012 occupancy.
Price: \$17.75 Net psf	Listing Agent: Robert Jennings

18 Acadia Street, HALIFAX



Size: 4,377 sq. ft.	Details: 2,572 sf ground floor finished office space, 1,805 sf third floor raw space. Medical focus.
Price: Starting at \$11.50 net	Listing Agents: Steven Dexter




Industrial Space for Lease

CLICK ON A PROPERTY PHOTO TO OBTAIN FURTHER DETAILS

VISIT OUR WEBSITE AT WWW.CWEAST.COM

NEW – 541 Pleasant Street, DARTMOUTH

	Size: 9,000 sq. ft.	Details: 0.84 acre site, 14' clear ceiling height, Two 12'x12' Grade loading doors.
	Price: \$12.00 Net psf	Listing Agents: Tom Gerard Mat Houston Phil Bolhuis

180 Thornhill Drive, DARTMOUTH

	Size: 70,000 sq. ft.	Details: Located in Burnside Industrial Park. Includes office and warehouse space.
	Price: \$5.00 Net psf	Listing Agents: Tom Gerard Mat Houston Phil Bolhuis

86 Troop Avenue, DARTMOUTH

	Size: 16,627 sq. ft.	Details: 3 dock loading doors, 24' ceiling height, excellent signage opportunity facing Burnside Dr.
	Price: \$7.50 Net psf – Sublet	Listing Agents: Andrew Belliveau


31 Raddall Avenue, DARTMOUTH

	Size: 2,494 sq. ft.	Details: One 14' x 12' grade loading door per bay. 18'-20' ceiling height. Partial office built out.
	Price: \$7.00 Net psf	Listing Agents: Tom Gerard Mat Houston Phil Bolhuis

95 Akerley Boulevard, DARTMOUTH

	Size: 2,880 sq. ft.	Details: Kitchenette & 4 private offices, One 10'x10' grade loading door. Term expires July 2013.
	Price: \$6.00 Net psf– Sublet	Listing Agents: Tom Gerard Mat Houston Phil Bolhuis

53 & 93 Memorial Drive, NORTH SYDNEY

	Size: Up to 167,372 sq. ft.	Details: Excellent strategic location 3 blocks from Port of Sydney. Min 24' clear ceilings.
	Price: \$3.00 psf Net	Listing Agents: Steven Dexter



Industrial Space for Lease

5

CLICK ON A PROPERTY PHOTO TO OBTAIN FURTHER DETAILS

VISIT OUR WEBSITE AT WWW.CWEAST.COM

3200 Kempt Road, HALIFAX



Size: 4,375 sq. ft. - Sublet	Details: Six 10x10 grade loading, One 12x10 grade loading door, Aug 31, 2015 lease expiry.
Price: \$7.50 Net psf	Listing Agents: Tom Gerard Mat Houston Phil Bolhuis

617 Windmill Road, DARTMOUTH



Size: Up to 9,467 sq. ft.	Details: 5,064 sf of warehouse with dock & grade loading.. 4,403 sf of warehouse/showroom.
Price: Please contact for details	Listing Agents: Tom Gerard Mat Houston Phil Bolhuis

67 Wright Avenue, DARTMOUTH



Size: Up to 31,537 sq. ft.	Details: 4 dock loading doors, 18' clear ceilings, Natural gas heating, refrigerated storage.
Price: \$5.00 Net psf	Listing Agents: Tom Gerard Mat Houston Phil Bolhuis

49 Pettipas Drive, BURNSIDE



Size: 2,880 sq. ft.	Details: Industrial flex, 2 grade loading doors, 14' ceilings, ample yard space.
Price: \$7.00 Net	Listing Agents: Tom Gerard Mat Houston Phil Bolhuis

170 Thornhill Drive, DARTMOUTH



Size: 40,445 sq. ft.	Details: Located in Burnside Industrial Park. Includes office and warehouse space.
Price: \$6.00 Net psf	Listing Agents: Tom Gerard Mat Houston Phil Bolhuis



Commercial / Retail Space for Lease

CLICK ON A PROPERTY PHOTO TO OBTAIN FURTHER DETAILS

VISIT OUR WEBSITE AT WWW.CWEAST.COM

NEW - 30 Farnham Gate, HALIFAX



Size:	1,790 sq. ft.	Details:	Ground level retail suite in busy Clayton Park Plaza, Rockingham Ridge, off Dunbrack St.
Price:	\$17.50 psf Net	Listing Agents:	Tom Gerard Mat Houston Phil Bolhuis

NEW - 3514 Joseph Howe Drive, HALIFAX



Size:	1,800 or 2,400 sq. ft.	Details:	Excellent exposure, central location across from Superstore. Ample parking available.
Price:	\$22.00 psf Net	Listing Agent:	Jamie Ferguson

NEW - 6238 Quinpool Road, HALIFAX



Size:	2,091 Main & 2,107 sq. ft. 2 nd	Details:	Mixed use commercial building. Great visibility and signage opportunity on Quinpool Rd.
Price:	\$20.00 Main & \$10.00 2 nd psf	Listing Agents:	Tom Gerard Mat Houston Phil Bolhuis

Magazine Landing, BURNSIDE



Size:	11,300 sq. ft.	Details:	Office / retail development off Windmill Road. Now pre-leasing. Fall 2012 occupancy.
Price:	\$22.00 Net psf	Listing Agent:	Robert Jennings

5 Cumberland Court, DARTMOUTH



Size:	1,247, 1,030 , 6,000 sq. ft.	Details:	Retail / office space in well established retail plaza.
Price:	\$18.00 Net	Listing Agent:	Andrew Belliveau Robert Jennings

600 Windmill Road, DARTMOUTH



Size:	6,920 sq. ft.	Details:	High profile office, showroom with warehouse & yard space. Ample parking on-site.
Price:	Please contact	Listing Agents:	Tom Gerard Mat Houston Phil Bolhuis



Commercial / Retail Space for Lease

CLICK ON A PROPERTY PHOTO TO OBTAIN FURTHER DETAILS

VISIT OUR WEBSITE AT WWW.CWEAST.COM

5486 Spring Garden Road (Mills), HALIFAX



Size: ONLY 950 sq. ft. REMAINING!	Details: PRIME retail space located In the Mills building on Spring Garden Road
Price: Starting rents \$30 net psf	Listing Agents: Andrew Belliveau Steven Dexter

6390 Cork Street, HALIFAX



Size: 870 sq. ft.	Details: Ground level flexible use space. Landlord open to tenant allowances based on term.
Price: \$1,200 Semi-Gross / Month	Listing Agents: Brian Woods

St. Lawrence Place, HALIFAX



Size: 6,200 sq. ft.	Details: Pre-Leasing new construction high profile retail space. Available Spring 2013.
Price: Please contact for details	Listing Agents: Andrew Belliveau

601 Sackville Drive, LOWER SACKVILLE



Size: 1,013 sq. ft.	Details: High visibility location on the sought after Sackville Dr. Currently used as a dental clinic.
Price: \$16.00 Net	Listing Agent: Jamie Ferguson

Notting Village, (On the corner of Boland & Wyse Road), DARTMOUTH



Size: 1,500 sq. ft. REMAINING	Details: Office / retail ground level space. Excellent signage and traffic exposure
Price: \$15.00 NNN	Listing Agent: Robert Jennings

1465 St. Margaret's Bay Road, HALIFAX



Size: 1,000 sq. ft.	Details: Highly visible location on busy thoroughfare. Ample parking, signage opportunity.
Price: \$20.00 psf Net	Listing Agent: Tom Gerard Mat Houston Phil Bolhuis



Commercial / Retail Space for Lease

CLICK ON A PROPERTY PHOTO TO OBTAIN FURTHER DETAILS

VISIT OUR WEBSITE AT WWW.CWEAST.COM

117 Kearney Lake Road, HALIFAX



Size: 1,658 sq. ft.	Details: Former Physiotherapy Clinic in Wedgewood Plaza. Good exposure, signage and parking!
Price: \$19.00 net psf	Listing Agents: Michael Brown

5288 St. Margaret's Bay Road, HALIFAX



Size: Up to 5,500 sq. ft.	Details: Located in high exposure area with ample parking onsite. Can be subdivided.
Price: \$17.75 Net psf	Listing Agent: Tom Gerard Mat Houston Phil Bolhuis

5144 Morris Street (The Vic), HALIFAX



Size: 4,000 sq. ft.	Details: Located on the busy corner of Hollis & Morris Street, excellent signage opportunity.
Price: \$25.00 psf Net	Listing Agents: Michael Brown

610 Wright Avenue, DARTMOUTH



Size: 2,000 sq. ft.	Details: Retail opportunity in brand new, state of the art building with National co-tenants.
Price: \$15.00 psf Net	Listing Agents: Steven Dexter

6100 Young Street, HALIFAX



Size: +/- 70,000 sq. ft.	Details: Proposed development, +/- 30,000 sf retail, +/-40,000 sf office and 321 apartment units.
Price: Please call for details	Listing Agent: Jamie Ferguson

644 Portland Street, DARTMOUTH



Size: 1,700 sq. ft.	Details: Co-Tenants include Cash Money, Hamachi House, Tim Horton's & CORA's.
Price: \$22.00 psf Net – Sublet	Listing Agent: Steven Dexter



Industrial Space for Sale

CLICK ON A PROPERTY PHOTO TO OBTAIN FURTHER DETAILS

VISIT OUR WEBSITE AT WWW.CWEAST.COM

31 Orion Court, DARTMOUTH



Size: 34,800 sq. ft. & 3.27 acres

Price: \$1,995,000

Details:

A 3.27 acres, including 5 buildings, and electric wind turbine.

Listing Agents:

[Tom Gerard](#) | [Mat Houston](#) | [Phil Bolhuis](#)

617 Windmill Road, DARTMOUTH



Size: 27,215 sq. ft.

Price: \$2,815,000

Details:

High exposure location with ample customer parking and fenced in compound.

Listing Agents:

[Tom Gerard](#) | [Mat Houston](#) | [Phil Bolhuis](#)



Commercial / Retail Space for Sale

10

CLICK ON A PROPERTY PHOTO TO OBTAIN FURTHER DETAILS

VISIT OUR WEBSITE AT WWW.CWEAST.COM

NEW - 6238 Quinpool Road, HALIFAX



Size:	4,198 sq. ft.	Details:	Mixed use commercial building. Great visibility and signage opportunity on Quinpool Rd.
Price:	\$795,000	Listing Agents:	Tom Gerard Mat Houston Phil Bolhuis

1274 Hammonds Plains Road, HALIFAX



Size:	3,680 sq. ft.	Details:	Currently operating as a church facility. Excellent condition. 24,636 sq. ft. lot.
Price:	\$475,000	Listing Agents:	Michael Brown

1714 St. Margaret's Bay Road, Halifax



Size:	12,242 sq. ft.	Details:	Four buildings on 4 acres of land with ample parking on site.
Price:	\$1,450,000	Listing Agents:	Michael Brown

26-30 Prince Arthur Street & 11-15 Princess Street, AMHERST



Size:	53,948 sq. ft.	Details:	Office & Retail Commercial buildings on 34,848 sq. ft. land including parking lot.
Price:	\$3,900,000	Listing Agents:	Michael Brown



Land for Sale 11

CLICK ON A PROPERTY PHOTO TO OBTAIN FURTHER DETAILS

VISIT OUR WEBSITE AT WWW.CWEAST.COM

269 Baker Drive, DARTMOUTH



Size: Up to 1 acre	Details: Ideal for retail developer or end user tenant. Minutes from Highways 111 and 118.
Price: Please contact	Listing Agents: Steve Dexter

Beech Hill Road, ANTIGONISH



Size: Over 12 acres	Details: Commercially zoned and; adjacent to the new divided highway with roundabout access
Price: \$1,400,000	Listing Agents: Robert Jennings

492-494 Herring Cove Road, HALIFAX



Size: 30,000 sq. ft.	Details: 3 parcels of vacant, untouched, land. Ideal Multi-Residential development. Zoned R-4.
Price: \$250,000	Listing Agents: Michael Brown

301 Sky (Bell) Boulevard, ENFIELD



Size: 110.58 acres	Details: Opposite to the Halifax Stanfield International Airport with Highway #102 visibility.
Price: \$880,000	Listing Agent: Tom Gerard Brian Woods

Highway #104, AMHERST EXIT



Size: Up to 23 acres	Details: Ideal for service, retail, hospitality or extended care.
Price: Call for details	Listing Agents: Andrew Belliveau Bill MacAvoy

509 & 511 Pleasant Street, DARTMOUTH



Size: Approx. 14,629 sq. ft.	Details: Development land for sale; PID 00248153 & 00634055. Prime location! Zoned C-2 .
Price: \$351,288	Listing Agents: Michael Brown



Land for Sale

12

CLICK ON A PROPERTY PHOTO TO OBTAIN FURTHER DETAILS

VISIT OUR WEBSITE AT WWW.CWEAST.COM

NEW – 9 Crestfield Drive & Hammonds Plains Road, HALIFAX



Size:	5.32 acres	Details:	Future development potential for seniors complex or assisted living. Zoned P-2.
Price:	\$1,159,000	Listing Agents:	Michael Brown

NEW – Lot R-Y-1-A, Greentree Avenue, WINDSOR JUNCTION



Size:	2.75 acres	Details:	Industrial zoned land.
Price:	\$595,000	Listing Agents:	Tom Gerard Mat Houston Phil Bolhuis

West Bedford Development, BEDFORD



Size:	8.9 acres	Details:	Highly visible retail development site across from new 4 pad arena at entrance to HRM
Price:	\$5,500,000	Listing Agents:	Steven Dexter

390 Windmill Road, DARTMOUTH



Size:	+/- 20,000 sq. ft.	Details:	Vacant corner lot at Windmill Rd. & Fernhill Dr. Potential to build 8,000 sq. ft. building.
Price:	\$350,000	Listing Agents:	Brian Woods

Autumn Drive, SPRYFIELD



Size:	5.8 acres	Details:	Undeveloped residential zoned RDD.
Price:	\$175,000	Listing Agent:	Michael Brown



Sold / Leased Properties

CLICK ON A PROPERTY PHOTO TO OBTAIN FURTHER DETAILS

VISIT OUR WEBSITE AT WWW.CWEAST.COM

SOLD - Montague Lands, MONTAGUE GOLD MINES



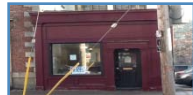
Size:	14.81 acres	Details:	Undeveloped residential lands, zoned R-1 and resource.
Price:	\$335,000	Listing Agent:	Michael Brown

SOLD - 1402 Cobequid Road, WAVERLEY



Size:	3,600 sq. ft.	Details:	Industrial space with good frontage.
Price:	\$260,000	Listing Agent:	Tom Gerard Mat Houston Phil Bolhuis

LEASED - 1323 Hollis Street, HALIFAX



Size:	705 sq. ft.	Details:	Office or retail space with excellent frontage and onsite parking.
Price:	\$1,500 / month	Listing Agents:	Tom Gerard Mat Houston Phil Bolhuis

LEASED - 2178 Gottingen Street, HALIFAX



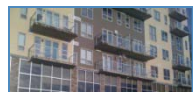
Size:	1,800 sq. ft.	Details:	Ground floor office / retail space. Elec. not included.
Price:	\$14.00 Gross	Listing Agents:	Tom Gerard Mat Houston Phil Bolhuis

LEASED - 5476 Spring Garden Road, HALIFAX



Size:	1,500 sq. ft.	Details:	Excellent 3 rd floor office space on the corner of Spring Garden Road, above Duggers.
Price:	\$25.00 gross psf	Listing Agents:	Steven Dexter Mat Houston

LEASED - 53 St. Margaret's Bay Road, HALIFAX



Size:	766 sq. ft.	Details:	Second floor office space in new construction building. Ample onsite parking.
Price:	\$2,100 / month Gross + utilities	Listing Agents:	Steven Dexter



Sold / Leased Properties

14

CLICK ON A PROPERTY PHOTO TO OBTAIN FURTHER DETAILS

VISIT OUR WEBSITE AT WWW.CWEAST.COM

UNDER AGREEMENT - 220 Prince Arthur Avenue, DARTMOUTH



Size: 6 Unit Apartment (potentially 7)	Details: Unit Mix: 2 One Bedroom, 3 Two Bedroom and 1 Three Bedroom - 13,500 sq. ft. lot
Price: \$460,000	Listing Agents: Robert Jennings

UNDER AGREEMENT - 100 Highfield Park Drive, DARTMOUTH



Size: 55,965 sq. ft.	Details: Vacant land and small multi-tenant building. Excellent frontage on Victoria Rd & Highfield.
Price: \$1,175,000	Listing Agents: Michael Brown

UNDER AGREEMENT - 72 - 74 Primrose Street, DARTMOUTH



Size: 1 acre	Details: 2 undeveloped parcels of R-3 zoned Multi-Family Land. Potential of up to 45 res. units.
Price: \$350,000	Listing Agent: Michael Brown

UNDER AGREEMENT - 140 Ilsley Avenue, DARTMOUTH



Size: 14,460 sq. ft.	Details: Single storey, steel frame construction industrial building.
Price: \$1,350,000	Listing Agents: Michael Brown Tom Gerard

UNDER AGREEMENT - 5 Cumberland Court, DARTMOUTH



Size: 1,247, 1,030, 6,000 sq. ft.	Details: Retail / office space in well established retail plaza.
Price: \$18.00 Net	Listing Agent: Andrew Belliveau Robert Jennings



C&WA Commercial Sales & Leasing Advisors

15

CLICK ON A PROPERTY PHOTO TO OBTAIN FURTHER DETAILS

VISIT OUR WEBSITE AT WWW.CWEAST.COM



Andrew Belliveau

Commercial Sales & Leasing
902.482.2998 Office
902.488.8886 Cell
902.425.7374 Fax
abelliveau@cweast.com



Phil Bolhuis

Commercial Sales & Leasing
902.425.5887 Office
902.293.4524 Cell
902.425.7374 Fax
pbolhuis@cweast.com



Michael Brown

Commercial Sales & Leasing
902.482.1767 Office
902.229.6179 Cell
902.425.7374 Fax
mbrown@cweast.com



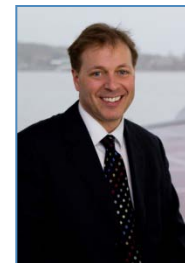
Steven Dexter

Commercial Sales & Leasing
902.425.0377 Office
902.222.2399 Cell
902.425.7374 Fax
sdexter@cweast.com



Jamie Ferguson

Commercial Sales & Leasing
902.425.4009 Office
902.209.5123 Cell
902.425.7374 Fax
jferguson@cweast.com



Tom Gerard, CCIM, SIOR

Senior Representative
Income & Investment Real Estate
902.425.1303 Office
902.830.1318 Cell
902.422.0327 Fax
tgerard@cweast.com



C&WA Commercial Sales & Leasing Advisors

16

CLICK ON A PROPERTY PHOTO TO OBTAIN FURTHER DETAILS

VISIT OUR WEBSITE AT WWW.CWEAST.COM



Mat Houston

Commercial Sales & Leasing

902.425.8446 Office

902.412.2940 Cell

902.425.7374 Fax

mhouston@cweast.com



Robert Jennings

Commercial Sales & Leasing

902.425.2512 Office

902.830.8863 Cell

902.425.7374 Fax

rjennings@cweast.com



Brian Woods

Commercial Sales & Leasing

902.422.1321 Office

902.830.5060 Cell

902.425.7374 Fax

bwoods@cweast.com