

results



talent



knowledge



Cushman & Wakefield Atlantic  
Broker Update  
Halifax, Nova Scotia Market  
November, 2010





# Office Space for Lease

CLICK ON A PROPERTY PHOTO TO OBTAIN FURTHER DETAILS

VISIT OUR WEBSITE AT [WWW.CWEAST.COM](http://WWW.CWEAST.COM)

## NEW – 617 Windmill Road, HALIFAX



Size:	Up to 12,525 sq. ft.	Details:	Fully finished office space in 2 separate buildings
Price:	Please contact for details	Listing Agents:	Tom Gerard   Mat Houston   Phil Bolhuis

## 2000 Barrington Street, HALIFAX



Size:	2,182 sq. ft.	Details:	Fully finished office space, high end furniture available. 6 <sup>th</sup> floor. Sublease until 05/31/12
Price:	Negotiable	Listing Agent:	Michael Brown

## 111 Ilsley Avenue, DARTMOUTH



Size:	2,370 sq. ft.	Details:	Fully finished office space.
Price:	\$15.00 Net	Listing Agent:	Michael Brown

## 5445 St. Margaret's Bay Road, HALIFAX



Size:	Up to 12,000 sq. ft.	Details:	Various office layouts available. New development. Completion Winter 2010/Spring 2011
Price:	\$14.00 - \$16.00 Net	Listing Agent:	Jamie Ferguson

## 2334 Longard Plaza, (off Brunswick Street, bottom of "Ocean Towers"), HALIFAX



Size:	2,700 sq. ft.	Details:	10 offices, kitchen, boardroom. Lots of free parking!
Price:	\$18.00 Semi Gross	Listing Agents:	Tom Gerard   Mat Houston   Phil Bolhuis

## 40 Wright Avenue, DARTMOUTH



Size:	3,700 sq. ft.	Details:	Office space.
Price:	\$10.00 Semi Gross	Listing Agents:	Tom Gerard   Mat Houston   Phil Bolhuis



# Office Space for Lease

CLICK ON A PROPERTY PHOTO TO OBTAIN FURTHER DETAILS

VISIT OUR WEBSITE AT [WWW.CWEAST.COM](http://WWW.CWEAST.COM)

## 5288 St. Margaret's Bay Road, HALIFAX



**Size:** 1,100 sq. ft. & 1,400 sq. ft.

**Details:**

Former accounting office & former massage clinic. Leaseholds in place. Available NOW.

**Price:** \$12.00 Net

**Listing Agents:**

[Tom Gerard](#) | [Mat Houston](#) | [Phil Bolhuis](#)

## 2180 Gottingen Street, HALIFAX



**Size:** 3,060 sq. ft.

**Details:**

Ground floor office / retail space. Elec. not included.

**Price:** \$14.00 Gross

**Listing Agents:**

[Tom Gerard](#) | [Mat Houston](#) | [Phil Bolhuis](#)

## 2411 Agricola Street, HALIFAX



**Size:** 7,379 sq. ft.

**Details:**

Office space on two levels. Also warehouse space with grade loading.

**Price:** \$15.00 \*\*Sublet

**Listing Agents:**

[Tom Gerard](#) | [Mat Houston](#) | [Phil Bolhuis](#)

## 5657 Spring Garden Road, HALIFAX



**Size:** 2,793 sq. ft.

**Details:**

Sublet expires December 31, 2013. Leaseholds in place.

**Price:** \$13.00 Net \*\*Sublet

**Listing Agents:**

[Tom Gerard](#) | [Mat Houston](#) | [Phil Bolhuis](#)



# Industrial Space for Lease

CLICK ON A PROPERTY PHOTO TO OBTAIN FURTHER DETAILS

VISIT OUR WEBSITE AT [WWW.CWEAST.COM](http://WWW.CWEAST.COM)

## NEW – 121 Ilsley Avenue, DARTMOUTH



Size:	2,106 sq. ft.	Details:	General warehouse
Price:	\$6.00	Listing Agent:	Jamie Ferguson

## NEW – 617 Windmill Road, DARTMOUTH



Size:	9,467 sq. ft.	Details:	5,064 sf of pure warehouse. 4,403 sf of warehouse/showroom. Additional storage avail.
Price:	Please contact for details	Listing Agents:	Tom Gerard   Mat Houston   Phil Bolhuis

## 200 Bluewater Road, BEDFORD



Size:	36,000 sq. ft.	Details:	Clean, dry, end cap unit. Dock loading, 25' ceilings, option to renew, able to be demised.
Price:	Call for details	Listing Agents:	Steven Dexter   Tom Gerard   Mat Houston   Phil Bolhuis

## 11 Acadia Street, WOODSIDE



Size:	10,500 sq. ft.	Details:	Warehouse with some office. 3 grade & 1 dock loading door. Ample yard with fence.
Price:	\$6.50 Net	Listing Agents:	Michael Brown   Tom Gerard   Mat Houston   Phil Bolhuis

## 23 Venture Crescent, ELMSDALE



Size:	2,642 sq. ft.	Details:	Dock loading. 20' ceilings.
Price:	\$2,400 / month	Listing Agents:	Tom Gerard   Mat Houston   Phil Bolhuis

## 49 Pettipas Drive, BURNSIDE



Size:	8,625 sq. ft. & 10,080 sq. ft.	Details:	Industrial flex, 1 dock loading doors, 14' ceilings, ample yard space.
Price:	\$7.00 Net	Listing Agents:	Tom Gerard   Mat Houston   Phil Bolhuis



# Industrial Space for Lease

CLICK ON A PROPERTY PHOTO TO OBTAIN FURTHER DETAILS

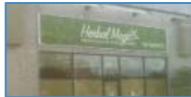
VISIT OUR WEBSITE AT [WWW.CWEAST.COM](http://WWW.CWEAST.COM)

## 3 Burley Court, BURNSIDE



<b>Size:</b>	9,846 sq. ft.	<b>Details:</b>	Dock & grade loading. 20' ceilings.
<b>Price:</b>	\$7.00	<b>Listing Agents:</b>	<a href="#">Tom Gerard</a>   <a href="#">Mat Houston</a>   <a href="#">Phil Bolhuis</a>

## 202 Brownlow Avenue, BURNSIDE



<b>Size:</b>	1,920 sq. ft.	<b>Details:</b>	Grade loading, offices and showroom. Excellent exposure.
<b>Price:</b>	\$8.30 Net	<b>Listing Agent:</b>	<a href="#">Jamie Ferguson</a>



# Commercial Retail Space for Lease

CLICK ON A PROPERTY PHOTO TO OBTAIN FURTHER DETAILS

VISIT OUR WEBSITE AT [WWW.CWEAST.COM](http://WWW.CWEAST.COM)

## NEW – 601 Sackville Drive, LOWER SACKVILLE



Size:	1,013 sq. ft.	Details:	High visibility location on the sough after Sackville Dr. Currently used as a dental clinic.
Price:	\$16.00 Net	Listing Agent:	Jamie Ferguson

## NEW – 3514 Joseph Howe Drive, HALIFAX



Size:	1,750 sq. ft.	Details:	Excellent retail location. Ample onsite parking, low operating costs.
Price:	\$20.00 Net	Listing Agent:	Jamie Ferguson

## Notting Village, (On the corner of Boland & Wyse Road), DARTMOUTH



Size:	6,350 sq. ft.	Details:	Office / retail ground level space. Excellent signage and traffic exposure
Price:	\$15.00 Net	Listing Agent:	Robert Jennings

## 124 Chain Lake Drive, HALIFAX



Size:	5,800 sq. ft.	Details:	Commercial / retail. Ground level. 20' ceilings. Grade loading.
Price:	\$14.00 Net	Listing Agents:	Tom Gerard   Mat Houston   Phil Bolhuis

## 5 Cumberland Court, DARTMOUTH



Size:	1,247 sq. ft. & 1,030 sq. ft.	Details:	Retail / office space in well established retail plaza.
Price:	\$16.00 Net	Listing Agent:	Andrew Belliveau

## 5486 Spring Garden Road (Mills), HALIFAX



Size:	9,000 sq. ft.	Details:	2 <sup>nd</sup> level retail. Can be subdivided.
Price:	Call for details	Listing Agents:	Andrew Belliveau   Steven Dexter





# Commercial Retail Space for Lease

CLICK ON A PROPERTY PHOTO TO OBTAIN FURTHER DETAILS

VISIT OUR WEBSITE AT [WWW.CWEAST.COM](http://WWW.CWEAST.COM)

## 5486 Spring Garden Road (Mills), HALIFAX



<b>Size:</b> 650 sq. ft.	<b>Details:</b> Brand new office / flex / retail space. Perfect for a professional studio.
<b>Price:</b> \$20.00	<b>Listing Agents:</b> <a href="#">Andrew Belliveau</a>   <a href="#">Steven Dexter</a>

## 201 Chain Lake Drive, HALIFAX



<b>Size:</b> 6,915 sq. ft.	<b>Details:</b> Commercial / retail space.
<b>Price:</b> \$15.00 Net	<b>Listing Agent:</b> <a href="#">Tom Gerard</a>   <a href="#">Mat Houston</a>   <a href="#">Phil Bolhuis</a>

## 649 Portland Hills Drive, DARTMOUTH



<b>Size:</b> 55,000 sq. ft.	<b>Details:</b> Commercial / retail space. Available immediately.
<b>Price:</b> \$16.00 Office / \$20.00 Retail	<b>Listing Agent:</b> <a href="#">Michael Brown</a>

## 122 Main Street, DARTMOUTH



<b>Size:</b> 9,168 sq. ft.	<b>Details:</b> 2 storey commercial/retail with attached warehouse facility
<b>Price:</b> Please contact for details	<b>Listing Agents:</b> <a href="#">Tom Gerard</a>   <a href="#">Mat Houston</a>   <a href="#">Phil Bolhuis</a>



# Industrial Space for Sale

CLICK ON A PROPERTY PHOTO TO OBTAIN FURTHER DETAILS

VISIT OUR WEBSITE AT [WWW.CWEAST.COM](http://WWW.CWEAST.COM)

## 11 Acadia Street, WOODSIDE



Size:	23,500 sq. ft.	Details:	Warehouse with office, 3 grade & 1 dock loading door. Ample yard, fenced compound.
Price:	\$1,500,000	Listing Agents:	Michael Brown   Mat Houston

## 140 Ilsley Avenue, DARTMOUTH



Size:	14,460 sq. ft.	Details:	Single storey, steel frame construction industrial building.
Price:	\$1,350,000	Listing Agents:	Michael Brown   Tom Gerard

## 1110 Highway #201 & 1292 Highway #201 South, GREENWOOD



Size:	32,46 acres	Details:	3,312 sq. ft. retail building & 3 warehouse buildings comprising 13,376 sq. ft.
Price:	\$450,000	Listing Agent:	Michael Brown

## 19 Lower Truro Road, TRURO



Size:	22,928 sq. ft.	Details:	Single storey pre-engineered steel warehouse facility
Price:	\$1,350,000	Listing Agents:	Tom Gerard   Mat Houston   Phil Bolhuis

## 23 Lower Truro Road, TRURO



Size:	15,517 sq. ft.	Details:	2 industrial buildings on 2.13 acres of land
Price:	\$900,000	Listing Agents:	Tom Gerard   Mat Houston   Phil Bolhuis

## 1468 – 1480 Caldwell Road, EASTERN PASSAGE



Size:	13.35 acres	Details:	2 industrial buildings on two separate legal parcels. Available separately or as a package.
Price:	\$800,000	Listing Agents:	Tom Gerard   Mat Houston   Phil Bolhuis





# Commercial Retail Space for Sale

CLICK ON A PROPERTY PHOTO TO OBTAIN FURTHER DETAILS

VISIT OUR WEBSITE AT [WWW.CWEAST.COM](http://WWW.CWEAST.COM)

## NEW – 378 Herring Cove Road, HALIFAX



Size:	24,984 sq. ft.	Details:	2 storey commercial / retail with a 9,942 sq. ft. unfinished basement.
Price:	\$895,000	Listing Agents:	Tom Gerard   Mat Houston   Phil Bolhuis

## 471 Herring Cove Road, HALIFAX



Size:	Over 2,600 sq. ft.	Details:	Former professional office.
Price:	\$165,000	Listing Agent:	Robert Jennings

## 32 Primrose Street, DARTMOUTH



Size:	4,500 sq. ft.	Details:	Office space, newly renovated throughout.
Price:	\$395,000	Listing Agents:	Tom Gerard   Mat Houston   Phil Bolhuis

## 1378 Bedford Highway, BEDFORD



Size:	4,000 sq. ft.	Details:	Ground floor, office / retail space. High visibility.
Price:	\$675,000	Listing Agent:	Jamie Ferguson

## 8961 Commercial Street, NEW MINAS



Size:	18,574 sq. ft.	Details:	2 storey commercial / retail with attached warehouse facility.
Price:	\$625,000	Listing Agents:	Tom Gerard   Mat Houston   Phil Bolhuis



# Land for Sale

CLICK ON A PROPERTY PHOTO TO OBTAIN FURTHER DETAILS

VISIT OUR WEBSITE AT [WWW.CWEAST.COM](http://WWW.CWEAST.COM)

## Highway #104, AMHERST EXIT



Size:	Up to 23 acres	Details:	Ideal for service, retail, hospitality or extended care.
Price:	Call for details	Listing Agents:	<a href="#">Andrew Belliveau</a>   <a href="#">Bill MacAvoy</a>

## Autumn Drive, SPRYFIELD



Size:	5.8 acres	Details:	Undeveloped residential zoned RDD.
Price:	\$175,000	Listing Agent:	<a href="#">Michael Brown</a>

## Montague Lands, MONTAGUE GOLD MINES



Size:	14.81 acres	Details:	Undeveloped residential lands, zoned R-1 and resource.
Price:	\$335,000	Listing Agent:	<a href="#">Michael Brown</a>

## Highway #14\_Garlands Crossing, WINDSOR



Size:	14 acres	Details:	GC (general commercial) zoning
Price:	\$995,000	Listing Agent:	<a href="#">Jamie Ferguson</a>

## 566 Willow Street, TRURO



Size:	1.27 acres	Details:	Ideal for immediate commercial development. Located opposite the Truro Ind. Park.
Price:	\$137,000	Listing Agents:	<a href="#">Tom Gerard</a>   <a href="#">Mat Houston</a>   <a href="#">Phil Bolhuis</a>



# Multi-Residential for Sale

CLICK ON A PROPERTY PHOTO TO OBTAIN FURTHER DETAILS

VISIT OUR WEBSITE AT [WWW.CWEAST.COM](http://WWW.CWEAST.COM)

## 149 Main Street, LIVERPOOL



Size:	11,554 sq. ft.	Details:	14 residential units, 2 ground floor commercial units.
Price:	\$346,500	Listing Agent:	Tom Gerard

## 29 Primrose Street, DARTMOUTH



Size:	22 Unit	Details:	22 unit apartment building. Natural gas heating.
Price:	\$990,000	Listing Agent:	Tom Gerard

## 28-30 Primrose Street, DARTMOUTH



Size:	16 Unit	Details:	2 x 8 unit apartment buildings. New Niessmann natural gas boiler.
Price:	\$800,000	Listing Agent:	Tom Gerard

## 7 Jackson Road, DARTMOUTH



Size:	45 Unit	Details:	3 storey wood frame walk-up
Price:	\$1,950,000	Listing Agent:	Tom Gerard

## 14 Jackson Road, DARTMOUTH



Size:	22 Unit	Details:	3 storey wood frame walk up.
Price:	\$950,000	Listing Agent:	Tom Gerard

## 104-106 Albro Lake Road & 127 Slayter Street, DARTMOUTH



Size:	6 Units & 14 Units	Details:	2 x 6 unit apartments available at Albro Lake Road. 1 x 14 unit at Slayter Street.
Price:	\$1,170,000	Listing Agent:	Tom Gerard



# Sold / Leased Properties

CLICK ON A PROPERTY PHOTO TO OBTAIN FURTHER DETAILS

VISIT OUR WEBSITE AT [WWW.CWEAST.COM](http://WWW.CWEAST.COM)

## SOLD – 112 Bluewater Road, DARTMOUTH



Size:	2,400 sq. ft.	Details:	Front office & rear warehouse.
Price:	-	Listing Agent:	Tom Gerard   Mat Houston   Phil Bolhuis

## UNDER AGREEMENT – 15 Kennedy Drive, DARTMOUTH



Size:	120 Unit	Details:	8 storey apartment building.
Price:	-	Listing Agent:	Tom Gerard



# Cushman & Wakefield Atlantic Halifax Team

CLICK ON A PROPERTY PHOTO TO OBTAIN FURTHER DETAILS

VISIT OUR WEBSITE AT [WWW.CWEAST.COM](http://WWW.CWEAST.COM)



## Andrew Belliveau

Commercial Sales & Leasing  
902.482.2998 Office  
902.488.8886 Cell  
902.425.7374 Fax  
[abelliveau@cweast.com](mailto:abelliveau@cweast.com)



## Phil Bolhuis

Commercial Sales & Leasing  
902.425.5887 Office  
902.293.4524 Cell  
902.425.7374 Fax  
[pbolhuis@cweast.com](mailto:pbolhuis@cweast.com)



## Michael Brown

Commercial Sales & Leasing  
902.482.1767 Office  
902.229.6179 Cell  
902.425.7374 Fax  
[mbrown@cweast.com](mailto:mbrown@cweast.com)



## Steven Dexter

Commercial Sales & Leasing  
902.425.0377 Office  
902.222.2399 Cell  
902.425.7374 Fax  
[sdexter@cweast.com](mailto:sdexter@cweast.com)



## Jamie Ferguson

Commercial Sales & Leasing  
902.425.4009 Office  
902.209.5123 Cell  
902.425.7374 Fax  
[jferguson@cweast.com](mailto:jferguson@cweast.com)



## Tom Gerard, ccim

Senior Representative  
Commercial Sales & Leasing  
902.425.1303 Office  
902.830.1318 Cell  
902.425.7374 Fax  
[tgerard@cweast.com](mailto:tgerard@cweast.com)



# Cushman & Wakefield Atlantic Halifax Team

CLICK ON A PROPERTY PHOTO TO OBTAIN FURTHER DETAILS

VISIT OUR WEBSITE AT [WWW.CWEAST.COM](http://WWW.CWEAST.COM)



## Mat Houston

Commercial Sales & Leasing  
902.425.8446 Office  
902.412.2940 Cell  
902.425.7374 Fax  
[mhouston@cweast.com](mailto:mhouston@cweast.com)



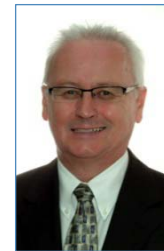
## Robert Jennings

Commercial Sales & Leasing  
902.425.2512 Office  
902.830.8863 Cell  
902.425.7374 Fax  
[rjennings@cweast.com](mailto:rjennings@cweast.com)



## Bill MacAvoy

Managing Director, Atlantic Canada  
902.425.1872 Office  
902.880.0445 Cell  
902.425.7374 Fax  
[bmacavoy@cweast.com](mailto:bmacavoy@cweast.com)



## John MacRae

Stewardship Advisory Services  
902.482.2999 Office  
902.483.2276 Cell  
902.425.7374 Fax  
[jmacrae@cweast.com](mailto:jmacrae@cweast.com)



## Krystal MacKinnon

Marketing & Research Analyst  
902.482.8858 Office  
902.425.7374 Fax  
[kmackinnon@cweast.com](mailto:kmackinnon@cweast.com)