

results



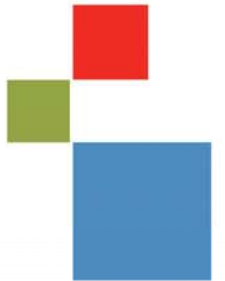
talent



knowledge



Cushman & Wakefield Atlantic
Broker Update
Halifax, Nova Scotia Market
December, 2010





Office Space for Lease

CLICK ON A PROPERTY PHOTO TO OBTAIN FURTHER DETAILS

VISIT OUR WEBSITE AT WWW.CWEAST.COM

617 Windmill Road, HALIFAX



Size: Up to 12,525 sq. ft.	Details: Fully finished office space in 2 separate buildings
Price: Please contact for details	Listing Agents: Tom Gerard Mat Houston Phil Bolhuis

2000 Barrington Street, HALIFAX



Size: 2,182 sq. ft.	Details: Fully finished office space, high end furniture available. 6 th floor. Sublease until 05/31/12
Price: Negotiable	Listing Agent: Michael Brown

111 Ilsley Avenue, DARTMOUTH



Size: 2,370 sq. ft.	Details: Fully finished office space.
Price: \$15.00 Net	Listing Agent: Michael Brown

5445 St. Margaret's Bay Road, HALIFAX



Size: Up to 12,000 sq. ft.	Details: Various office layouts available. New development. Completion Winter 2010/Spring 2011
Price: \$14.00 - \$16.00 Net	Listing Agent: Jamie Ferguson

2334 Longard Plaza, (off Brunswick Street, bottom of "Ocean Towers"), HALIFAX



Size: 2,700 sq. ft.	Details: 10 offices, kitchen, boardroom. Lots of free parking!
Price: \$18.00 Semi Gross	Listing Agents: Tom Gerard Mat Houston Phil Bolhuis

40 Wright Avenue, DARTMOUTH



Size: 3,700 sq. ft.	Details: Office space.
Price: \$10.00 Semi Gross	Listing Agents: Tom Gerard Mat Houston Phil Bolhuis



Office Space for Lease

CLICK ON A PROPERTY PHOTO TO OBTAIN FURTHER DETAILS

VISIT OUR WEBSITE AT WWW.CWEAST.COM

5288 St. Margaret's Bay Road, HALIFAX



Size: 1,100 sq. ft. & 1,400 sq. ft.	Details: Former accounting office & former massage clinic. Leaseholds in place. Available NOW.
Price: \$12.00 Net	Listing Agents: Tom Gerard Mat Houston Phil Bolhuis

2180 Gottingen Street, HALIFAX



Size: 3,060 sq. ft.	Details: Ground floor office / retail space. Elec. not included.
Price: \$14.00 Gross	Listing Agents: Tom Gerard Mat Houston Phil Bolhuis

2411 Agricola Street, HALIFAX



Size: 7,379 sq. ft.	Details: Office space on two levels. Also warehouse space with grade loading.
Price: \$15.00 **Sublet	Listing Agents: Tom Gerard Mat Houston Phil Bolhuis

5657 Spring Garden Road, HALIFAX



Size: 2,793 sq. ft.	Details: Sublet expires December 31, 2013. Leaseholds in place.
Price: \$13.00 Net **Sublet	Listing Agents: Tom Gerard Mat Houston Phil Bolhuis

NEW – 3514 Joseph Howe Drive, HALIFAX



Size: 2,793 sq. ft.	Details: Sublet expires December 31, 2013. Leaseholds in place.
Price: \$13.00 Net **Sublet	Listing Agents: Michael Brown



Industrial Space for Lease

CLICK ON A PROPERTY PHOTO TO OBTAIN FURTHER DETAILS

VISIT OUR WEBSITE AT WWW.CWEAST.COM

121 Ilsley Avenue, DARTMOUTH



Size:	2,106 sq. ft.	Details:	General warehouse
Price:	\$6.00	Listing Agent:	Jamie Ferguson

617 Windmill Road, DARTMOUTH



Size:	9,467 sq. ft.	Details:	5,064 sf of pure warehouse. 4,403 sf of warehouse/showroom. Additional storage avail.
Price:	Please contact for details	Listing Agents:	Tom Gerard Mat Houston Phil Bolhuis

200 Bluewater Road, BEDFORD



Size:	36,000 sq. ft.	Details:	Clean, dry, end cap unit. Dock loading, 25' ceilings, option to renew, able to be demised.
Price:	Call for details	Listing Agents:	Steven Dexter Tom Gerard Mat Houston Phil Bolhuis

11 Acadia Street, WOODSIDE



Size:	10,500 sq. ft.	Details:	Warehouse with some office. 3 grade & 1 dock loading door. Ample yard with fence.
Price:	\$6.50 Net	Listing Agents:	Michael Brown Tom Gerard Mat Houston Phil Bolhuis

23 Venture Crescent, ELMSDALE



Size:	2,642 sq. ft.	Details:	Dock loading. 20' ceilings.
Price:	\$2,400 / month	Listing Agents:	Tom Gerard Mat Houston Phil Bolhuis

49 Pettipas Drive, BURNSIDE



Size:	8,625 sq. ft. & 10,080 sq. ft.	Details:	Industrial flex, 1 dock loading doors, 14' ceilings, ample yard space.
Price:	\$7.00 Net	Listing Agents:	Tom Gerard Mat Houston Phil Bolhuis



Industrial Space for Lease

CLICK ON A PROPERTY PHOTO TO OBTAIN FURTHER DETAILS

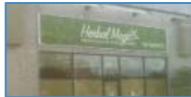
VISIT OUR WEBSITE AT WWW.CWEAST.COM

3 Burley Court, BURNSIDE



Size:	9,846 sq. ft.	Details:	Dock & grade loading. 20' ceilings.
Price:	\$7.00	Listing Agents:	Tom Gerard Mat Houston Phil Bolhuis

202 Brownlow Avenue, BURNSIDE



Size:	1,920 sq. ft.	Details:	Grade loading, offices and showroom. Excellent exposure.
Price:	\$8.30 Net	Listing Agent:	Jamie Ferguson



Commercial Retail Space for Lease

CLICK ON A PROPERTY PHOTO TO OBTAIN FURTHER DETAILS

VISIT OUR WEBSITE AT WWW.CWEAST.COM

601 Sackville Drive, LOWER SACKVILLE



Size:	1,013 sq. ft.	Details:	High visibility location on the sough after Sackville Dr. Currently used as a dental clinic.
Price:	\$16.00 Net	Listing Agent:	Jamie Ferguson

3514 Joseph Howe Drive, HALIFAX



Size:	1,750 sq. ft.	Details:	Excellent retail location. Ample onsite parking, low operating costs.
Price:	\$20.00 Net	Listing Agent:	Jamie Ferguson

Notting Village, (On the corner of Boland & Wyse Road), DARTMOUTH



Size:	6,350 sq. ft.	Details:	Office / retail ground level space. Excellent signage and traffic exposure
Price:	\$15.00 Net	Listing Agent:	Robert Jennings

124 Chain Lake Drive, HALIFAX



Size:	5,800 sq. ft.	Details:	Commercial / retail. Ground level. 20' ceilings. Grade loading.
Price:	\$14.00 Net	Listing Agents:	Tom Gerard Mat Houston Phil Bolhuis

5 Cumberland Court, DARTMOUTH



Size:	1,247 sq. ft. & 1,030 sq. ft.	Details:	Retail / office space in well established retail plaza.
Price:	\$16.00 Net	Listing Agent:	Andrew Belliveau

5486 Spring Garden Road (Mills), HALIFAX



Size:	9,000 sq. ft.	Details:	2 nd level retail. Can be subdivided.
Price:	Call for details	Listing Agents:	Andrew Belliveau Steven Dexter



Commercial Retail Space for Lease

CLICK ON A PROPERTY PHOTO TO OBTAIN FURTHER DETAILS

VISIT OUR WEBSITE AT WWW.CWEAST.COM

5486 Spring Garden Road (Mills), HALIFAX



Size:	650 sq. ft.	Details:	Brand new office / flex / retail space. Perfect for a professional studio.
Price:	\$20.00	Listing Agents:	Andrew Belliveau Steven Dexter

201 Chain Lake Drive, HALIFAX



Size:	6,915 sq. ft.	Details:	Commercial / retail space.
Price:	\$15.00 Net	Listing Agent:	Tom Gerard Mat Houston Phil Bolhuis

649 Portland Hills Drive, DARTMOUTH



Size:	55,000 sq. ft.	Details:	Commercial / retail space. Available immediately.
Price:	\$16.00 Office / \$20.00 Retail	Listing Agent:	Michael Brown

122 Main Street, DARTMOUTH



Size:	9,168 sq. ft.	Details:	2 storey commercial/retail with attached warehouse facility.
Price:	Please contact for details	Listing Agents:	Tom Gerard Mat Houston Phil Bolhuis

NEW – 6290 Quinpool Road, HALIFAX



Size:	1,600 sq. ft.	Details:	Premium exposure to vehicular & passerby traffic! Currently occupied by Aqua Creations.
Price:	\$29.50 Semi-Gross	Listing Agents:	Michael Brown



Industrial Space for Sale

CLICK ON A PROPERTY PHOTO TO OBTAIN FURTHER DETAILS

VISIT OUR WEBSITE AT WWW.CWEAST.COM

11 Acadia Street, WOODSIDE



Size:	23,500 sq. ft.	Details:	Warehouse with office, 3 grade & 1 dock loading door. Ample yard, fenced compound.
Price:	\$1,500,000	Listing Agents:	Michael Brown Mat Houston

140 Ilsley Avenue, DARTMOUTH



Size:	14,460 sq. ft.	Details:	Single storey, steel frame construction industrial building.
Price:	\$1,350,000	Listing Agents:	Michael Brown Tom Gerard

1110 Highway #201 & 1292 Highway #201 South, GREENWOOD



Size:	32,46 acres	Details:	3,312 sq. ft. retail building & 3 warehouse buildings comprising 13,376 sq. ft.
Price:	\$450,000	Listing Agent:	Michael Brown

19 Lower Truro Road, TRURO



Size:	22,928 sq. ft.	Details:	Single storey pre-engineered steel warehouse facility
Price:	\$1,350,000	Listing Agents:	Tom Gerard Mat Houston Phil Bolhuis

23 Lower Truro Road, TRURO



Size:	15,517 sq. ft.	Details:	2 industrial buildings on 2.13 acres of land
Price:	\$900,000	Listing Agents:	Tom Gerard Mat Houston Phil Bolhuis

1468 – 1480 Caldwell Road, EASTERN PASSAGE



Size:	13.35 acres	Details:	2 industrial buildings on two separate legal parcels. Available separately or as a package.
Price:	\$800,000	Listing Agents:	Tom Gerard Mat Houston Phil Bolhuis



Commercial Retail Space for Sale

CLICK ON A PROPERTY PHOTO TO OBTAIN FURTHER DETAILS

VISIT OUR WEBSITE AT WWW.CWEAST.COM

378 Herring Cove Road, HALIFAX



Size:	24,984 sq. ft.	Details:	2 storey commercial / retail with a 9,942 sq. ft. unfinished basement.
Price:	\$895,000	Listing Agents:	Tom Gerard Mat Houston Phil Bolhuis

8961 Commercial Street, NEW MINAS



Size:	18,574 sq. ft.	Details:	2 storey commercial / retail with attached warehouse facility.
Price:	\$625,000	Listing Agents:	Tom Gerard Mat Houston Phil Bolhuis

32 Primrose Street, DARTMOUTH



Size:	4,500 sq. ft.	Details:	Office space, newly renovated throughout.
Price:	\$395,000	Listing Agents:	Tom Gerard Mat Houston Phil Bolhuis

1378 Bedford Highway, BEDFORD



Size:	4,000 sq. ft.	Details:	Ground floor, office / retail space. High visibility.
Price:	\$675,000	Listing Agent:	Jamie Ferguson

NEW - 12345 Peggy's Cove Road, GLEN HAVEN



Size:	5,400 sq. ft. / 4.49 acres	Details:	The building consists of open warehouse/shop space, up to 5 offices, & 3 washrooms.
Price:	\$468,000	Listing Agent:	Robert Jennings



Land for Sale

CLICK ON A PROPERTY PHOTO TO OBTAIN FURTHER DETAILS

VISIT OUR WEBSITE AT WWW.CWEAST.COM

Highway #104, AMHERST EXIT



Size:	Up to 23 acres	Details:	Ideal for service, retail, hospitality or extended care.
Price:	Call for details	Listing Agents:	Andrew Belliveau Bill MacAvoy

Autumn Drive, SPRYFIELD



Size:	5.8 acres	Details:	Undeveloped residential zoned RDD.
Price:	\$175,000	Listing Agent:	Michael Brown

Montague Lands, MONTAGUE GOLD MINES



Size:	14.81 acres	Details:	Undeveloped residential lands, zoned R-1 and resource.
Price:	\$335,000	Listing Agent:	Michael Brown

Highway #14_Garlands Crossing, WINDSOR



Size:	14 acres	Details:	GC (general commercial) zoning
Price:	\$995,000	Listing Agent:	Jamie Ferguson

566 Willow Street, TRURO



Size:	1.27 acres	Details:	Ideal for immediate commercial development. Located opposite the Truro Ind. Park.
Price:	\$137,000	Listing Agents:	Tom Gerard Mat Houston Phil Bolhuis

NEW - 72 - 74 Primrose Street, DARTMOUTH



Size:	1 acre	Details:	2 undeveloped parcels of R-3 zoned Multi-Family Land. Potential of up to 45 res. units.
Price:	\$450,000	Listing Agent:	Michael Brown



Multi-Residential for Sale

CLICK ON A PROPERTY PHOTO TO OBTAIN FURTHER DETAILS

VISIT OUR WEBSITE AT WWW.CWEAST.COM

104-106 Albro Lake Road & 127 Slayter Street, DARTMOUTH



Size:	6 Units & 14 Units	Details:	2 x 6 unit apartments available at Albro Lake Road. 1 x 14 unit at Slayter Street.
Price:	\$1,170,000	Listing Agent:	Tom Gerard

29 Primrose Street, DARTMOUTH



Size:	22 Unit	Details:	22 unit apartment building. Natural gas heating.
Price:	\$990,000	Listing Agent:	Tom Gerard

28-30 Primrose Street, DARTMOUTH



Size:	16 Unit	Details:	2 x 8 unit apartment buildings. New Niessmann natural gas boiler.
Price:	\$800,000	Listing Agent:	Tom Gerard

7 Jackson Road, DARTMOUTH



Size:	45 Unit	Details:	3 storey wood frame walk-up
Price:	\$1,950,000	Listing Agent:	Tom Gerard

14 Jackson Road, DARTMOUTH



Size:	22 Unit	Details:	3 storey wood frame walk up.
Price:	\$950,000	Listing Agent:	Tom Gerard



Sold / Leased Properties

CLICK ON A PROPERTY PHOTO TO OBTAIN FURTHER DETAILS

VISIT OUR WEBSITE AT WWW.CWEAST.COM

UNDER AGREEMENT - 471 Herring Cove Road, HALIFAX



Size: Over 2,600 sq. ft.

Details: Former professional office.

Price: \$165,000

Listing Agent: Robert Jennings

UNDER AGREEMENT - 149 Main Street, LIVERPOOL



Size: 11,554 sq. ft.

Details: 14 residential units, 2 ground floor commercial units.

Price: \$346,500

Listing Agent: Tom Gerard



Cushman & Wakefield Atlantic Halifax Team

CLICK ON A PROPERTY PHOTO TO OBTAIN FURTHER DETAILS

VISIT OUR WEBSITE AT WWW.CWEAST.COM



Andrew Belliveau

Commercial Sales & Leasing
902.482.2998 Office
902.488.8886 Cell
902.425.7374 Fax
abelliveau@cweast.com



Phil Bolhuis

Commercial Sales & Leasing
902.425.5887 Office
902.293.4524 Cell
902.425.7374 Fax
pbolhuis@cweast.com



Michael Brown

Commercial Sales & Leasing
902.482.1767 Office
902.229.6179 Cell
902.425.7374 Fax
mbrown@cweast.com



Steven Dexter

Commercial Sales & Leasing
902.425.0377 Office
902.222.2399 Cell
902.425.7374 Fax
sdexter@cweast.com



Jamie Ferguson

Commercial Sales & Leasing
902.425.4009 Office
902.209.5123 Cell
902.425.7374 Fax
jferguson@cweast.com



Tom Gerard, ccim

Senior Representative
Commercial Sales & Leasing
902.425.1303 Office
902.830.1318 Cell
902.425.7374 Fax
tgerard@cweast.com



Cushman & Wakefield Atlantic Halifax Team

CLICK ON A PROPERTY PHOTO TO OBTAIN FURTHER DETAILS

VISIT OUR WEBSITE AT WWW.CWEAST.COM



Mat Houston

Commercial Sales & Leasing
902.425.8446 Office
902.412.2940 Cell
902.425.7374 Fax
mhouston@cweast.com



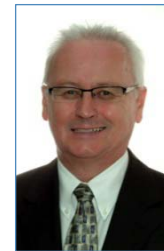
Robert Jennings

Commercial Sales & Leasing
902.425.2512 Office
902.830.8863 Cell
902.425.7374 Fax
rjennings@cweast.com



Bill MacAvoy

Managing Director, Atlantic Canada
902.425.1872 Office
902.880.0445 Cell
902.425.7374 Fax
bmacavoy@cweast.com



John MacRae

Stewardship Advisory Services
902.482.2999 Office
902.483.2276 Cell
902.425.7374 Fax
jmacrae@cweast.com



Krystal MacKinnon

Marketing & Research Analyst
902.482.8858 Office
902.425.7374 Fax
kmackinnon@cweast.com