

Monthly Listings Report

Saint John & Fredericton,
New Brunswick

November 2017

For Lease

Office Space for Lease

Industrial Space for Lease

Commercial/Retail Space for Lease



Office Space For Lease

Click on a property photo to obtain more information online



73-75 KING STREET, SAINT JOHN

Size	+/- 10,000 sf	Details	4 floors of office space. Great uptown location. Close to all amenities.
Price	\$8.00 psf Net	Agent(s)	Mike Watkins



75 PRINCE WILLIAM STREET, SAINT JOHN

Size	+/- 7,300 sf	Details	Located in uptown Saint John with beautiful harbour views.
Price	\$12.00 psf Net	Agent(s)	Mike Watkins



85 CHARLOTTE STREET, SAINT JOHN

Size	871 to 10,719 sf	Details	This four storey building features on-site management office.
Price	Please contact	Agent(s)	Mike Watkins



40 CHARLOTTE STREET, SAINT JOHN

Size	4,487 sf	Details	Features 4 private offices, 2 washrooms, a kitchenette, & an open area!
Price	\$16.50 psf Gross	Agent(s)	Mike Watkins



20 CHURCH AVENUE, SAINT JOHN

Size	1,500 sf	Details	Nicely finished and furnished 2nd floor office space.
Price	\$1,500 / mo. + utilities	Agent(s)	Mike Watkins



25 WINTER STREET, SAINT JOHN

Size	Up to 6,600 sf	Details	2 storey office complex with 3,300 sf per floor. Landlord will renovate.
Price	\$10.00 psf Net	Agent(s)	Mike Watkins

Industrial Space For Lease

Click on a property photo to obtain more information online



327 KING WILLIAM ROAD, SAINT JOHN

Size	+/- 8,000 sf	Details	Office & Warehouse Space in Spruce Lake Industrial Park.
Price	\$8.00 psf Net	Agent(s)	Mike Watkins



250 INDUSTRIAL DRIVE, SAINT JOHN

Size	1,820 sf	Details	Office space in multi tenant industrial building with a fenced in compound.
Price	\$2,825 psf per month	Agent(s)	Mike Watkins



85-95 EXPANSION AVENUE, SAINT JOHN

Size	16,000 sf	Details	Newly constructed, located in the Grandview Industrial Park.
Price	\$8.50 psf Net	Agent(s)	Mike Watkins



110 ASHBURN LAKE ROAD, SAINT JOHN

Size	+/- 500 sf	Details	Investment opportunity with great highway access in an excellent location.
Price	\$650/mo. Semi-Gross	Agent(s)	Mike Watkins



559 WILSEY ROAD, FREDERICTON

Size	1+/- 11,000 sf	Details	Newly renovated industrial building, high traffic with great highway access
Price	\$6.50 psf Net	Agent(s)	Mike Watkins



1185 BAYSIDE DRIVE, SAINT JOHN

Size	2,250 sf & 1,900 sf	Details	2 flex space units . Prime location at entrance to McAllister Industrial Park.
Price	\$8.90 psf Net	Agent(s)	Mike Watkins

Industrial Space For Lease

Click on a property photo to obtain more information online



27 WHITEBONE WAY, SAINT JOHN			
Size	13,400 sf	Details	Industrial building for sub-lease in McAllister Industrial Park
Price	\$7,000/mo. Net	Agent(s)	Mike Watkins

Commercial/Retail Space For Lease

Click on a property photo to obtain more information online



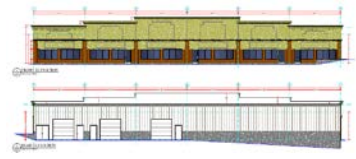
NEW, 145 SOMERSET STREET, SAINT JOHN

Size	1,700 sf	Details	Commercial/Retail building for lease on a 15,198 sf corner lot
Price	\$9.75 psf Net	Agent(s)	Mike Watkins



NEW, 212 MCALLISTER DRIVE, SAINT JOHN

Size	217,000 sf	Details	Commercial retail and office space in Parkway Mall
Price	\$20.00 psf Net	Agent(s)	Mike Watkins



NEW, 1175 BAYSIDE DRIVE, SAINT JOHN

Size	9,724 sf	Details	Brand new, top notch Commercial/Industrial facility.
Price	\$10.00 psf Semi-Gross	Agent(s)	Mike Watkins



20 CHURCH AVENUE, SAINT JOHN

Size	3,000 sf	Details	Charming stone building; ground floor retail, second floor office space.
Price	\$1,500/mo./floor + H&L	Agent(s)	Mike Watkins



1185 BAYSIDE DRIVE , SAINT JOHN

Size	2,250 sf & 1,900 sf	Details	2 units available. Prime location at entrance to McAllister Industrial Park.
Price	\$8.90 psf Net	Agent(s)	Mike Watkins



140 ROUTE 124, NORTON

Size	1,555 sf	Details	Commercial/Retail building on beautifully landscaped 22,927 sf corner lot
Price	\$16.00 psf Net	Agent(s)	Mike Watkins

Commercial/Retail Space For Lease

Click on a property photo to obtain more information online



184-186 HAMPTON ROAD, QUISPAMIS			
Size	837 – 3,017 sf	Details	Retail space available for lease; various sizes in Lakefield Plaza.
Price	\$12.00-\$14.00 psf Net	Agent(s)	Mike Watkins

For Sale

Office & Industrial Space for Sale

Commercial/Retail Space for Sale

Investment Properties for Sale

Land for Sale



Office & Industrial Properties For Sale

Click on a property photo to obtain more information online



NEW, 327 KING WILLIAM ROAD, SAINT JOHN

Size	+/- 8,800 sf	Details	Office & Warehouse Space in Spruce Lake Industrial Park.
Price	\$569,000	Agent(s)	Mike Watkins



22 KING STREET, SAINT JOHN

Size	+/- 21,165 sf	Details	Iconic 4 storey stone office building in uptown Saint John.
Price	\$1,950,000	Agent(s)	Mike Watkins



75 PRINCE WILLIAM STREET, SAINT JOHN

Size	+/- 30,000 sf	Details	Professional and modern building with harbour and the city views
Price	\$2,200,000	Agent(s)	Mike Watkins

Commercial/Retail Properties For Sale

Click on a property photo to obtain more information online



NEW, 145 SOMERSET STREET, SAINT JOHN

Size	15,198 sf	Details	1,700 sf Commercial/Retail building on a 15,198 sf corner lot
Price	\$159,000	Agent(s)	Mike Watkins



140 ROUTE 124, NORTON

Size	1,555 sf	Details	Commercial/Retail building on beautifully landscaped 22,927 sf corner lot
Price	\$249,900	Agent(s)	Mike Watkins



20 CHURCH AVENUE, SAINT JOHN

Size	3,000 sf	Details	Charming stone building; ground floor retail, second floor office space.
Price	\$325,000	Agent(s)	Mike Watkins



300 MAIN STREET, SAINT JOHN

Size	5,600 sf	Details	Ground floor retail with 1,600 sf of residential of the second floor.
Price	\$325,000	Agent(s)	Mike Watkins



507 MAIN STREET, SAINT JOHN

Size	1,500 sf +Full basement	Details	Charming heritage building, centrally located. Ideal for office, retail or bar.
Price	\$250,000	Agent(s)	Mike Watkins



624 ROUTE 101, NEW MARYLAND

Size	1,890 sf	Details	Located on a large lot with ample onsite paved parking with great frontage.
Price	\$68,500	Agent(s)	Mike Watkins

Commercial/Retail Properties For Sale

Click on a property photo to obtain more information online



391 LANCASTER AVENUE, SAINT JOHN			
Size	2,000 sf	Details	Thriving convenience store & commercial investment property.
Price	\$189,000	Agent(s)	Mike Watkins

Land For Sale / Lease

Click on a property photo to obtain more information online



NEW, BAYSIDE DRIVE, SAINT JOHN

Size	+/- 36 acres	Details	Development land adjacent McAllister Industrial Park.
Price	\$925,000	Agent(s)	Mike Watkins



FORBES DRIVE, SAINT JOHN

Size	+/- 2 acres	Details	Multi-family residential land for development in the Millidgeville area.
Price	\$144,000	Agent(s)	Mike Watkins



HIGH MEADOW DRIVE, SAINT JOHN

Size	2.3 acres	Details	Prime land for development close to McAllister Mall & Forrest Hills.
Price	\$112,500	Agent(s)	Mike Watkins



1271 BAYSIDE DRIVE, SAINT JOHN

Size	+/- 9 acres	Details	Vendor is very motivated. Close to the McAllister Industrial Park entrance.
Price	\$85,000/acre (Contact)	Agent(s)	Mike Watkins



MCALLISTER DRIVE, SAINT JOHN

Size	14 acres	Details	Development site. Ideal location, close to all east side amenities.
Price	\$1,750,000	Agent(s)	Mike Watkins

cwatlantic.com



Mike Watkins
Commercial Sales & Leasing
506.653.3810 Direct
506.639.0281 Mobile
506.693.0435 Fax
mwatkins@cwatlantic.com



Donna Green
Commercial Sales & Leasing
506.387.6930 Direct
506.866.1319 Mobile
506.387.6929 Fax
dgreen@cwatlantic.com



Adam MaGee
Commercial Sales & Leasing Assistant
506.387.6928 Direct
506.872.2507 Mobile
506.387.6929 Fax
amagee@cwatlantic.com



Bill MacAvoy
Managing Director
902.425.1872 Direct
902.880.0445 Mobile
902.425.7374 Fax
bmacavoy@cwatlantic.com



Ian Franklin, CCIM
Commercial Sales & Leasing
506.387.6920 Direct
506.863.7199 Mobile
506.387.6929 Fax
ifranklin@cwatlantic.com