

Monthly Listings Report

Saint John & Fredericton, New Brunswick
FEBRUARY 2016



For Lease

Office Space for Lease

Industrial Space for Lease

Commercial/Retail Space for Lease



Office Space For Lease

Click on a property photo to obtain more information online



133 PRINCE WILLIAM STREET, SAINT JOHN

Size	1,550, 1,505 & 1,200 sf	Details	Professional office suites with underground parking and harbor views.
Price	\$18.50 psf Semi-Gross	Agent(s)	Mike Watkins



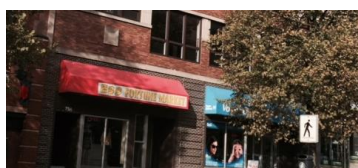
25 WINTER STREET, SAINT JOHN

Size	Up to 6,600 sf	Details	2 storey office complex with 3,300 sf per floor. Landlord will renovate.
Price	\$10.00 psf Net	Agent(s)	Mike Watkins



20 CHURCH AVENUE, SAINT JOHN

Size	1,500 sf	Details	Nicely finished and furnished 2nd floor office space.
Price	\$1,500 / mth + utilities	Agent(s)	Mike Watkins



73-75 KING STREET, SAINT JOHN

Size	Up to 20,000 sf	Details	4 floors of office space. Great uptown location. Close to all amenities.
Price	\$8.00 psf Net	Agent(s)	Mike Watkins



415 KING STREET, FREDERICTON

Size	+/- 21,528 sf	Details	Distinctive office/retail character bldg. in the heart of downtown
Price	Please Contact	Agent(s)	Ian Franklin Donna Green Adam MaGee



75 PRINCE WILLIAM STREET, SUITE 300, SAINT JOHN

Size	2,000 sf	Details	3rd floor open concept with private offices, boardrooms & lunchrooms.
Price	\$21.00 psf Gross	Agent(s)	Mike Watkins

Office Space For Lease

[Click on a property photo to obtain more information online](#)



75 PRINCE WILLIAM STREET, SUITE 205, SAINT JOHN

Size	Up to 2,700 sf	Details	2nd floor office suite. Building offers Cat 6 wiring & fibre; data cente
Price	\$21.00 psf Gross	Agent(s)	Mike Watkins



75 PRINCE WILLIAM STREET, SUITE 100, SAINT JOHN

Size	9,143 sf	Details	Open concept with some private offices, boardrooms and lunchrooms.
Price	\$19.50 psf Gross	Agent(s)	Mike Watkins

Industrial Space For Lease

Click on a property photo to obtain more information online



120 ASHBURN LAKE ROAD, SAINT JOHN

Size	1,400 sf & 1,850 sf	Details	Great highway access, excellent location.
Price	\$8.50 psf Net	Agent(s)	Mike Watkins



1185 BAYSIDE DRIVE, SAINT JOHN

Size	2,250 sf & 1,900 sf	Details	2 flex space units . Prime location at entrance to McAllister Industrial Park.
Price	\$12.00 psf Net	Agent(s)	Mike Watkins



327 KING WILLIAM ROAD, SAINT JOHN

Size	8,800 sf	Details	CAM/Tax: \$4.50 psf. Located in Spruce Lake Industrial Park.
Price	\$9.00 psf Net	Agent(s)	Mike Watkins



195 ROTHESAY AVENUE, SAINT JOHN

Size	4,500 sf	Details	High exposure/high traffic location, 3 large drive in doors, ample parking.
Price	\$7.00 psf Net	Agent(s)	Mike Watkins



85-95 EXPANSION AVENUE, SAINT JOHN

Size	16,000 sf	Details	Newly constructed, located in the Grandview Industrial Park.
Price	\$8.50 psf Net	Agent(s)	Mike Watkins

Commercial/Retail Space For Lease

Click on a property photo to obtain more information online



9 SOMERSET STREET, SUITE 2 & 4, SAINT JOHN

Size	2,904 sf & 542 sf	Details	Well maintained strip mall with two suites on corner lot. Nicely finished.
Price	\$12.60 Net/\$850/mo.	Agent(s)	Mike Watkins



15 FULTON LANE, SAINT JOHN

Size	3,800 sf	Details	Large open space, ample on-site parking, ideal for retail or daycare.
Price	\$8.00 psf Net	Agent(s)	Mike Watkins



195 ROTHESAY AVENUE, SAINT JOHN

Size	4,500 sf	Details	High exposure & traffic location, 3 large drive in doors, ample parking.
Price	\$7.00 psf Net	Agent(s)	Mike Watkins



250 WATER STREET, SAINT JOHN

Size	1,640 sf	Details	Commercial/office space, Newest most prestigious building in Saint John
Price	\$1,800/mo. Gross	Agent(s)	Mike Watkins



20 CHURCH AVENUE, SAINT JOHN

Size	3,000 sf	Details	Charming stone building; ground floor retail, second floor office space.
Price	\$1,500/mo./floor + H&L	Agent(s)	Mike Watkins



1185 BAYSIDE DRIVE, SAINT JOHN

Size	2,250 sf & 1,900 sf	Details	2 units available. Prime location at entrance to McAllister Industrial Park.
Price	\$12.00 psf Net	Agent(s)	Mike Watkins

Commercial/Retail Space For Lease

[Click on a property photo to obtain more information online](#)



184-186 HAMPTON ROAD, SAINT JOHN

Size	Various Sizes	Details	Retail space available for lease; various sizes. CAM/Tax \$8.50 psf.
Price	From \$12.00 psf Net	Agent(s)	Mike Watkins

For Sale

Office & Industrial Space for Sale

Commercial/Retail Space for Sale

Investment Properties for Sale

Land for Sale



Office Properties For Sale

Click on a property photo to obtain more information online



48 CLARK ROAD, ROTHESAY

Size	1,400 sf	Details	Completely renovated office/commercial property w/ paved parking.
Price	\$249,000	Agent(s)	Mike Watkins



120 ASHBURN LAKE ROAD, SAINT JOHN

Size	32,000 sf	Details	3 buildings on 14 acres of land. Excellent location, great highway access.
Price	\$2,950,000	Agent(s)	Mike Watkins



105-107 PRINCESS STREET, SAINT JOHN

Size	4,198 sf	Details	Excellent opportunity, good quality income property in the uptown area.
Price	\$419,000	Agent(s)	Mike Watkins

Industrial Properties For Sale

Click on a property photo to obtain more information online



NEW, 131 CITY ROAD, SAINT JOHN

Size	3,560 sf	Details	Building, adjacent lot & tools/equipment for automotive machining.
Price	\$219,000	Agent(s)	Mike Watkins



120 ASHBURN LAKE ROAD, SAINT JOHN

Size	Up to 32,000 sf	Details	3 buildings on 14 acres of land. Excellent location, great highway access.
Price	\$2,950,000	Agent(s)	Mike Watkins



327 KING WILLIAM ROAD, SAINT JOHN

Size	4,768 sf	Details	Class A building with professional image. Located on high traffic Coverdale.
Price	\$749,000	Agent(s)	Ian Franklin Donna Green Adam MaGee



195 ROTHESAY AVENUE, SAINT JOHN

Size	4,500 sf	Details	High exposure & traffic location, 3 large drive in doors, ample parking.
Price	\$349,000	Agent(s)	Mike Watkins

Commercial/Retail Properties For Sale

Click on a property photo to obtain more information online



NEW, 131 CITY ROAD, SAINT JOHN

Size	3,560 sf	Details	Building, adjacent lot & tools/equipment for automotive machining.
Price	\$219,000	Agent(s)	Mike Watkins



20 CHURCH AVENUE, SAINT JOHN

Size	3,000 sf	Details	Charming stone building; ground floor retail, second floor office space.
Price	\$325,000	Agent(s)	Mike Watkins



300 MAIN STREET, SAINT JOHN

Size	4,600 sf	Details	Ground floor retail with 1,600 sf of residential of the second floor.
Price	\$325,000	Agent(s)	Mike Watkins



105-107 PRINCESS STREET, SAINT JOHN

Size	6,600 sf	Details	7 residential units, 2 commercial units.
Price	\$419,000	Agent(s)	Mike Watkins



507 MAIN STREET, SAINT JOHN

Size	1,500 sf +Full basement	Details	Charming heritage building, centrally located. Ideal for office, retail or bar.
Price	\$250,000	Agent(s)	Mike Watkins



195 ROTHESAY AVENUE, SAINT JOHN

Size	4,720 sf	Details	High exposure & traffic location, 3 large drive in doors, ample parking.
Price	\$349,000	Agent(s)	Mike Watkins

Commercial/Retail Properties For Sale

[Click on a property photo to obtain more information online](#)



391 LANCASTER AVENUE, SAINT JOHN

Size	2,000 sf	Details	"Turn Key" convenience store business for sale. Licensed to sell "lottery".
Price	\$150,000	Agent(s)	Mike Watkins

Land For Sale / Lease

Click on a property photo to obtain more information online



CHAPEL ROAD, ROTHEDAY

Size	1.5 Acres	Details	Commercial development land; fully serviced, cleared & ready to build on.
Price	\$329,000	Agent(s)	Mike Watkins



MCALLISTER DRIVE, SAINT JOHN

Size	14 acres	Details	Development site. Ideal location, close to all east side amenities.
Price	\$1,750,000	Agent(s)	Mike Watkins



FORBES DRIVE, SAINT JOHN

Size	+/- 2 acres	Details	Multi-family residential land for development in the Millidgeville area.
Price	\$144,000	Agent(s)	Mike Watkins



HIGH MEADOW DRIVE, SAINT JOHN

Size	2.3 acres	Details	Prime land for development close to McAllister Mall & Forrest Hills.
Price	\$112,500	Agent(s)	Mike Watkins



1271 BAYSIDE DRIVE, SAINT JOHN

Size	+/- 9 acres	Details	Vendor is very motivated. Close to the McAllister Industrial Park entrance.
Price	\$85,000/acre (Contact)	Agent(s)	Mike Watkins



30 TIM STREET, SAINT JOHN

Size	Under 1 acre	Details	Land available for storage of trailers, trucks, construction equipment.
Price	\$600 per month	Agent(s)	Mike Watkins

Sold & Leased

A list of properties that have been recently sold & leased by our brokerage team.



Sold & Leased Properties

Click on a property photo to obtain more information online



LEASED, 55 STINSON DRIVE, SAINT JOHN

Size	12,000 sf	Details	6 large drive-thru bays with power doors. Spruce Lake Industrial Park.
Price	\$899,000	Agent(s)	Mike Watkins



SOLD, 149 KING STREET, ST. STEPHEN

Size	10,320 sf	Details	Being sold as an operating bowling business. Includes fixtures/equipment.
Price	\$250,000	Agent(s)	Mike Watkins

cwatlantic.com



Mike Watkins
Commercial Sales & Leasing
506.653.3810 Direct
506.639.0281 Mobile
506.693.0435 Fax
mwatkins@cwatlantic.com



Donna Green
Commercial Sales & Leasing
506.387.6930 Direct
506.866.1319 Mobile
506.387.6929 Fax
dgreen@cwatlantic.com



Adam MaGee
Commercial Sales & Leasing Assistant
506.387.6928 Direct
506.872.2507 Mobile
506.387.6929 Fax
amagee@cwatlantic.com



Bill MacAvoy
Managing Director
902.425.1872 Direct
902.880.0445 Mobile
902.425.7374 Fax
bmacavoy@cwatlantic.com



Ian Franklin, CCIM
Commercial Sales & Leasing
506.387.6920 Direct
506.863.7199 Mobile
506.387.6929 Fax
ifranklin@cwatlantic.com



Martine Godbout
Sales Support Manager |
Directrice du Service Aux VentEs
506.387.6924 Direct
506.387.6929 Fax
resson@cwatlantic.com