

# MONTHLY LISTINGS REPORT

Greater Moncton & Surrounding Areas  
New Brunswick | April 2020

# FOR LEASE



OFFICE SPACE FOR LEASE

---

INDUSTRIAL SPACE FOR LEASE

---

COMMERCIAL/RETAIL SPACE FOR LEASE

---

# OFFICE SPACE FOR LEASE

CLICK ON THE PHOTO TO OBTAIN MORE INFORMATION ONLINE



## 233-235 ST. GEORGE STREET, MONCTON

<b>Size</b>	+/- 1,300-3,000 sf	<b>Details</b>	2 storey building with rear parking and separate entrance for each floor
<b>Price</b>	\$8.00-\$11.00 psf Net	<b>Agent(s)</b>	Donna Green



## 1644 MOUNTAIN ROAD, MONCTON

<b>Size</b>	+/- 1,600 sf	<b>Details</b>	High profile professional office, mixed use space, with high visibility
<b>Price</b>	\$14.00 psf Semi-Gross	<b>Agent(s)</b>	Donna Green



## 50 DRISCOLL CRESCENT, MONCTON

<b>Size</b>	+/- 912 sf	<b>Details</b>	Upgraded professional office space with storage space and natural light
<b>Price</b>	\$1,200/month Gross	<b>Agent(s)</b>	Donna Green



## 23 BIGGS DRIVE, RIVERVIEW

<b>Size</b>	+/- 2,000 sf	<b>Details</b>	Office and warehouse space on a busy street, ideal for skilled trades
<b>Price</b>	\$2,000/month + utilities	<b>Agent(s)</b>	Donna Green



## 720 MAIN STREET, MONCTON

<b>Size</b>	Up to 4,500 sf	<b>Details</b>	2 <sup>nd</sup> floor office space with various suites and sizes available
<b>Price</b>	\$17.00 psf Gross	<b>Agent(s)</b>	Donna Green



## 883 MAIN STREET, MONCTON

<b>Size</b>	+/- 2,000 sf	<b>Details</b>	Rare single tenant space in downtown Moncton with great natural light
<b>Price</b>	\$14.00 psf Net	<b>Agent(s)</b>	Adam MaGee

# OFFICE SPACE FOR LEASE

CLICK ON THE PHOTO TO OBTAIN MORE INFORMATION ONLINE



196 ROBINSON COURT, MONCTON			
<b>Size</b>	+/- 1,000 and 2,000 sf	<b>Details</b>	Completely renovated office space(s) in the heart of Downtown Moncton
<b>Price</b>	\$18.00 psf Gross	<b>Agent(s)</b>	Donna Green



844 MAIN STREET, MONCTON			
<b>Size</b>	+/- 2,920 sf	<b>Details</b>	Modern, downtown ground floor space with exposed brick and natural light
<b>Price</b>	\$23.00 psf Gross	<b>Agent(s)</b>	Donna Green



413 MAIN STREET, MONCTON			
<b>Size</b>	Up to 6,000 sf	<b>Details</b>	3-storey mixed-use office/commercial space with stunning upgrades
<b>Price</b>	\$18-28 psf Semi-Gross	<b>Agent(s)</b>	Donna Green



814 MAIN STREET, MONCTON			
<b>Size</b>	+/- 800 sf	<b>Details</b>	2 <sup>nd</sup> floor office space for small business in the heart of downtown
<b>Price</b>	\$25.00 psf Gross	<b>Agent(s)</b>	Donna Green



860 MAIN STREET, MONCTON			
<b>Size</b>	+/- 1,015 and 1,627 sf	<b>Details</b>	Downtown office space with great views and ample natural light
<b>Price</b>	\$13.00 psf Net	<b>Agent(s)</b>	Donna Green



722 ACADIE AVENUE, DIEPPE			
<b>Size</b>	+/- 2,200 sf	<b>Details</b>	Lower level flex commercial space in a bustling area of Dieppe
<b>Price</b>	\$7.00 psf Net	<b>Agent(s)</b>	Donna Green

# OFFICE SPACE FOR LEASE

CLICK ON THE PHOTO TO OBTAIN MORE INFORMATION ONLINE



## 210 JOHN STREET, MONCTON

<b>Size</b>	+/- 1,894 to 3,986 sf	<b>Details</b>	Main floor office space units which can be combined to create 3,986 sf
<b>Price</b>	\$14.00 psf Net	<b>Agent(s)</b>	Ian Franklin



## 343 ST. GEORGE STREET, MONCTON

<b>Size</b>	+/- 1,400 & 3,500 sf	<b>Details</b>	2 <sup>nd</sup> storey office units available. Open concept, industrial style office space
<b>Price</b>	\$13-\$17 Semi-Gross	<b>Agent(s)</b>	Donna Green   Adam MaGee



## 206 PINE GLEN ROAD, RIVERVIEW

<b>Size</b>	Up to 500 sf	<b>Details</b>	Two private turnkey offices in great location with ample parking
<b>Price</b>	\$400-\$450/month Gross	<b>Agent(s)</b>	Donna Green



## 394 COVERDALE ROAD, RIVERVIEW

<b>Size</b>	+/- 800 sf	<b>Details</b>	Bright open concept commercial space in the centre of Riverview
<b>Price</b>	\$1,600/month Semi-Gross	<b>Agent(s)</b>	Donna Green



## 232-236 ST. GEORGE STREET, MONCTON

<b>Size</b>	+/- 329 to 2,400 sf	<b>Details</b>	Various suites, 5-storey multi-tenant office building close to downtown
<b>Price</b>	\$17.00 psf Gross	<b>Agent(s)</b>	Donna Green



## 182-184-190 HALIFAX STREET, MONCTON

<b>Size</b>	+/- 3,555 sf	<b>Details</b>	Various size units of office and warehouse space for lease
<b>Price</b>	Please Contact	<b>Agent(s)</b>	Ian Franklin   Adam MaGee

# OFFICE SPACE FOR LEASE

CLICK ON THE PHOTO TO OBTAIN MORE INFORMATION ONLINE



## 607 ST. GEORGE BOULEVARD, MONCTON

<b>Size</b>	+/- 1,667 sf	<b>Details</b>	Office space in central location with great visibility
<b>Price</b>	\$15.00 psf Gross	<b>Agent(s)</b>	Donna Green



## 22 CHURCH STREET – COMMUNITY PEACE CENTRE, MONCTON

<b>Size</b>	+/- 441 to 10,635 sf	<b>Details</b>	Multi-tenant office building in the heart of downtown Moncton
<b>Price</b>	Please Contact	<b>Agent(s)</b>	Ian Franklin

# INDUSTRIAL SPACE FOR LEASE

CLICK ON THE PHOTO TO OBTAIN MORE INFORMATION ONLINE



## 80 DRISCOLL CRESCENT, MONCTON

<b>Size</b>	+/- 12,009 sf	<b>Details</b>	High quality warehouse space with +/- 1,500 of office space
<b>Price</b>	\$10.00 psf Gross	<b>Agent(s)</b>	Ian Franklin   Adam MaGee



## 23 BIGGS DRIVE, RIVERVIEW

<b>Size</b>	+/- 2,000 sf	<b>Details</b>	Office and warehouse space on a busy street, ideal for skilled trades
<b>Price</b>	\$2,000/month + utilities	<b>Agent(s)</b>	Donna Green



## 178 HALIFAX STREET, MONCTON

<b>Size</b>	+/- 2,600 sf	<b>Details</b>	Warehouse space ideal for service commercial, industrial use or storage
<b>Price</b>	\$1,500/month Semi-Gross	<b>Agent(s)</b>	Donna Green



## 653 BABIN STREET, DIEPPE

<b>Size</b>	+/- 2,200 sf	<b>Details</b>	Multi-tenant building with excellent exposure and easy accessibility
<b>Price</b>	\$15 psf Gross	<b>Agent(s)</b>	Ian Franklin



## 725 CHAMPLAIN STREET, DIEPPE

<b>Size</b>	+/- 1,200 sf	<b>Details</b>	Warehouse space with dock level loading
<b>Price</b>	\$7.25 psf Net	<b>Agent(s)</b>	Adam MaGee



## 227 HENRI DUNANT STREET, MONCTON

<b>Size</b>	+/- 6,000 sf	<b>Details</b>	Prime industrial space with +/- 26' ceilings and office space
<b>Price</b>	\$6.75 psf Net	<b>Agent(s)</b>	Adam MaGee

# INDUSTRIAL SPACE FOR LEASE

CLICK ON THE PHOTO TO OBTAIN MORE INFORMATION ONLINE



## 190 ALISON BOULEVARD, FREDERICTON

<b>Size</b>	+/- 9,688 sf	<b>Details</b>	Showroom, and office area plus warehouse space for sub-lease
<b>Price</b>	\$7.95 psf Net	<b>Agent(s)</b>	Ian Franklin   Adam MaGee



## 182-184-190 HALIFAX STREET, MONCTON

<b>Size</b>	+/- 782 to 3,555 sf	<b>Details</b>	Various size units of office and warehouse space for lease
<b>Price</b>	Please Contact	<b>Agent(s)</b>	Ian Franklin   Adam MaGee



# COMMERCIAL/RETAIL SPACE FOR LEASE

CLICK ON THE PHOTO TO OBTAIN MORE INFORMATION ONLINE



## 201 AMIRAULT STREET, DIEPPE

<b>Size</b>	+/- 2,800 sf	<b>Details</b>	Commercial building with office space & storage in a high traffic location
<b>Price</b>	\$2,500 per Month Net	<b>Agent(s)</b>	Donna Green



## 1644 MOUNTAIN ROAD, MONCTON

<b>Size</b>	+/- 1,600 sf	<b>Details</b>	High profile professional office, mixed use space, with high visibility
<b>Price</b>	\$14.00 psf Semi-Gross	<b>Agent(s)</b>	Donna Green



## 413 MAIN STREET, MONCTON

<b>Size</b>	Up to 6,000 sf	<b>Details</b>	3-storey mixed-use office/commercial space with stunning upgrades
<b>Price</b>	\$18-28 psf Semi-Gross	<b>Agent(s)</b>	Donna Green



## 409-415 ELMWOOD DRIVE, MONCTON

<b>Size</b>	Up to 18,341 sf	<b>Details</b>	Prime retail space ideal for a retail store, restaurant or entertainment
<b>Price</b>	Please Contact	<b>Agent(s)</b>	Donna Green



## 760 CHAMPLAIN STREET, DIEPPE

<b>Size</b>	+/- 5,000 sf	<b>Details</b>	Recently renovated restaurant with kitchen in high profile location
<b>Price</b>	Please Contact	<b>Agent(s)</b>	Ian Franklin



## 844 MAIN STREET, MONCTON

<b>Size</b>	+/- 2,920 sf	<b>Details</b>	Prominent downtown commercial space with a 50' dedicated storefront
<b>Price</b>	\$23.00 psf Gross	<b>Agent(s)</b>	Donna Green

# COMMERCIAL/RETAIL SPACE FOR LEASE

CLICK ON THE PHOTO TO OBTAIN MORE INFORMATION ONLINE



## 394 COVERDALE ROAD, RIVERVIEW

<b>Size</b>	+/- 800 sf	<b>Details</b>	Bright open concept commercial space in the centre of Riverview
<b>Price</b>	\$1,600/month Semi-Gross	<b>Agent(s)</b>	Donna Green



## 1666 MAIN STREET, MONCTON

<b>Size</b>	+/- 1,400 sf	<b>Details</b>	Recently renovated office space with potential for multi-tenant
<b>Price</b>	\$1,675/month Net	<b>Agent(s)</b>	Ian Franklin   Adam MaGee



## THE JUNCTION – URBAN VILLAGE, TANNERY PLACE SOUTH, MONCTON

[WATCH VIDEO](#)

<b>Size</b>	+/- 800 to 13,920 sf	<b>Details</b>	Up to 6 retail, restaurants & professional services units for lease
<b>Price</b>	Please Contact	<b>Agent(s)</b>	Ian Franklin



## 121 PINE GLEN, RIVERVIEW

<b>Size</b>	+/- 1,365 sf	<b>Details</b>	Great retail/office space in a high traffic location in Riverview
<b>Price</b>	\$12.00 psf Net	<b>Agent(s)</b>	Ian Franklin



## 722 ACADIE AVENUE, DIEPPE

<b>Size</b>	+/- 2,200 sf	<b>Details</b>	Lower level flex commercial space in a bustling area of Dieppe
<b>Price</b>	\$7.00 psf Net	<b>Agent(s)</b>	Donna Green



## 540 PINWOOD ROAD, RIVERVIEW

<b>Size</b>	+/- 1,560 to 6,909 sf	<b>Details</b>	Class A retail space in the heart of Riverview's retail development area
<b>Price</b>	\$14.00 psf Net	<b>Agent(s)</b>	Adam MaGee

# COMMERCIAL/RETAIL SPACE FOR LEASE

CLICK ON THE PHOTO TO OBTAIN MORE INFORMATION ONLINE



363 MOUNTAIN ROAD, MONCTON			
<b>Size</b>	+/- 3,465 sf	<b>Details</b>	Large 2-storey single tenant building on a corner lot
<b>Price</b>	Please Contact	<b>Agent(s)</b>	Ian Franklin

# FOR SALE



COMMERCIAL/OFFICE/RETAIL FOR SALE

---

INVESTMENT PROPERTIES FOR SALE

---

INDUSTRIAL PROPERTIES FOR SALE

---

LAND FOR SALE

---

# COMMERCIAL/OFFICE/RETAIL FOR SALE

CLICK ON THE PHOTO TO OBTAIN MORE INFORMATION ONLINE



## 3134 MAIN STREET, SALISBURY

<b>Size</b>	+/- 8,310 sf	<b>Details</b>	Retail building with open concept showroom and large storage capacity
<b>Price</b>	Please Contact	<b>Agent(s)</b>	Adam MaGee



## 201 AMIRAUT STREET, DIEPPE

<b>Size</b>	+/- 2,800 sf	<b>Details</b>	Commercial building with office space & storage in a high traffic location
<b>Price</b>	\$379,000	<b>Agent(s)</b>	Donna Green



## 60, CHEMIN DE LA TRAVERSE, SAINT PAUL

<b>Size</b>	+/- 5,000 sf	<b>Details</b>	Open concept space suitable for a multitude of uses
<b>Price</b>	\$199,000	<b>Agent(s)</b>	Adam MaGee



## 760 CHAMPLAIN STREET, DIEPPE

<b>Size</b>	+/- 5,000 sf	<b>Details</b>	Recently renovated restaurant with kitchen in high profile location
<b>Price</b>	\$989,000	<b>Agent(s)</b>	Ian Franklin



## 77 ROONEY CRESCENT, MONCTON

<b>Size</b>	+/- 7,122 sf	<b>Details</b>	Ideal office building with ample parking in the Moncton Industrial Park
<b>Price</b>	\$855,000	<b>Agent(s)</b>	Adam MaGee



## 125 DOMINION STREET, MONCTON

<b>Size</b>	+/- 2,700 sf	<b>Details</b>	Single-tenant property usable for many uses in a busy neighborhood
<b>Price</b>	\$159,000	<b>Agent(s)</b>	Adam MaGee

# COMMERCIAL/OFFICE/RETAIL FOR SALE

CLICK ON THE PHOTO TO OBTAIN MORE INFORMATION ONLINE



## 178 HALIFAX STREET, MONCTON

<b>Size</b>	+/- 7,840 sf	<b>Details</b>	Ideal for service commercial or retail with renovated office space
<b>Price</b>	\$525,000	<b>Agent(s)</b>	Donna Green



## 1666 MAIN STREET, MONCTON

<b>Size</b>	+/- 1,400 sf	<b>Details</b>	Recently renovated office space with potential for multi-tenant
<b>Price</b>	\$249,000	<b>Agent(s)</b>	Ian Franklin   Adam MaGee

# INVESTMENT PROPERTIES FOR SALE

CLICK ON THE PHOTO TO OBTAIN MORE INFORMATION ONLINE



## 2842 MAIN STREET, HILLSBOROUGH

<b>Size</b>	+/- 18,418 sf	<b>Details</b>	Land and investment property in Hillsborough with 1.89 acres of land
<b>Price</b>	\$549,000	<b>Agent(s)</b>	Ian Franklin



## 491 MOUNTAIN ROAD, MONCTON

<b>Size</b>	+/- 40,000 sf	<b>Details</b>	3 income-generating buildings and additional land for development
<b>Price</b>	\$749,000	<b>Agent(s)</b>	Ian Franklin

# INDUSTRIAL PROPERTIES FOR SALE

CLICK ON THE PHOTO TO OBTAIN MORE INFORMATION ONLINE



## 42 RUE INDUSTRIELLE, BOUCTOUCHE

<b>Size</b>	+/- 102,860 sf	<b>Details</b>	Weigh station & warehouse building on large paved lot (2.36 acres)
<b>Price</b>	\$349,000	<b>Agent(s)</b>	Ian Franklin   Adam MaGee



## 178 HALIFAX STREET, MONCTON

<b>Size</b>	+/- 7,840 sf	<b>Details</b>	Warehouse space ideal for service commercial, industrial use or storage
<b>Price</b>	\$525,000	<b>Agent(s)</b>	Donna Green



## 2222 ROUTE 134, LAKEVILLE

<b>Size</b>	+/- 18,726 sf	<b>Details</b>	Multi-use building on 4.7 acres of land
<b>Price</b>	\$560,000	<b>Agent(s)</b>	Adam MaGee



## 182-190 HALIFAX STREET, MONCTON

<b>Size</b>	+/- 9,668 sf	<b>Details</b>	Multi-building property with a mix of office and warehouse space
<b>Price</b>	\$499,000	<b>Agent(s)</b>	Ian Franklin   Adam MaGee



# INCOME/RESIDENTIAL PROPERTIES FOR SALE

CLICK ON THE PHOTO TO OBTAIN MORE INFORMATION ONLINE



313 MOUNTAIN ROAD & 9 BROMLEY AVENUE, MONCTON			
<b>Size</b>	+/- 14,750 sf	<b>Details</b>	2 buildings and large corner lot with potential for redevelopment
<b>Price</b>	\$325,000	<b>Agent(s)</b>	Ian Franklin



75 KING STREET, SACKVILLE			
<b>Size</b>	25-Unit Apt.	<b>Details</b>	2-storey 25-unit apartment building close to Mount Allison University
<b>Price</b>	\$1,449,500	<b>Agent(s)</b>	Ian Franklin

# LAND FOR SALE

CLICK ON THE PHOTO TO OBTAIN MORE INFORMATION ONLINE



## 177 BOTSFORD STREET, MONCTON

<b>Size</b>	+/- 8,062 sf	<b>Details</b>	High profile development land; plans for 9-unit apartment building available
<b>Price</b>	\$149,500	<b>Agent(s)</b>	Ian Franklin



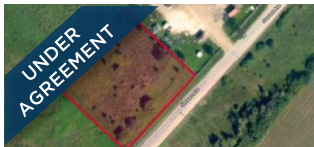
## 885 DIEPPE BOULEVARD, DIEPPE

<b>Size</b>	+/- 46,750 sf	<b>Details</b>	Prime development land with excellent frontage for sale or lease
<b>Price</b>	\$600,000	<b>Agent(s)</b>	Ian Franklin



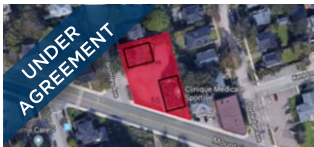
## SILVERWOOD DEVELOPMENT LAND, FREDERICTON

<b>Size</b>	+/- 400 acres	<b>Details</b>	Rare opportunity for a large-scale development within Fredericton
<b>Price</b>	Please Contact	<b>Agent(s)</b>	Bill MacAvoy



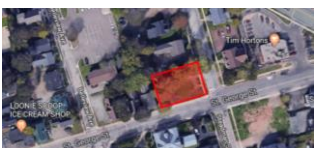
## 230 STEWART AVENUE, SUSSEX

<b>Size</b>	+/- 40,000 sf	<b>Details</b>	Prime development site located seconds from Route 1 highway
<b>Price</b>	\$50,000	<b>Agent(s)</b>	Adam MaGee



## 313 MOUNTAIN ROAD & 9 BROMLEY AVENUE, MONCTON

<b>Size</b>	+/- 14,750 sf	<b>Details</b>	2 buildings and large corner lot with potential for redevelopment
<b>Price</b>	\$325,000	<b>Agent(s)</b>	Ian Franklin



## STEADMAN STREET & ST. GEORGE STREET LAND, MONCTON

<b>Size</b>	+/- 7,100 sf	<b>Details</b>	High-traffic location with 90 ft of frontage on St. George Street
<b>Price</b>	\$99,500	<b>Agent(s)</b>	Donna Green

# LAND FOR SALE

CLICK ON THE PHOTO TO OBTAIN MORE INFORMATION ONLINE



## HIGHWAY 2 DEVELOPMENT LAND, SECOND NORTH RIVER/SALISBURY

<b>Size</b>	5 to 15-acre lots	<b>Details</b>	Located near the off/on Exit 433 ramp near the Trans-Canada Highway
<b>Price</b>	\$50,000 per acre	<b>Agent(s)</b>	Ian Franklin   Adam MaGee



## BENJAMIN STREET LAND, DIEPPE

<b>Size</b>	+/- 5.3 acres	<b>Details</b>	High visibility development site with 700 ft of frontage on Highway 15
<b>Price</b>	\$799,000	<b>Agent(s)</b>	Ian Franklin   Adam MaGee



## 980 MOUNTAIN ROAD, MONCTON

<b>Size</b>	+/- 25,280 sf	<b>Details</b>	Rare development opportunity located on Mountain Road
<b>Price</b>	\$480,000	<b>Agent(s)</b>	Adam MaGee



## 700 PINEWOOD ROAD, RIVERVIEW

<b>Size</b>	+/- 25,220 sf	<b>Details</b>	Prime development land opportunity located on Pinewood Road
<b>Price</b>	\$155,000	<b>Agent(s)</b>	Adam MaGee



## 110 NORTHWOOD ROAD, MONCTON

<b>Size</b>	+/- 18.29 acres	<b>Details</b>	Prime development land along Trans-Canada Highway. Zoned RR-1
<b>Price</b>	\$795,000	<b>Agent(s)</b>	Ian Franklin



## 1730 MAIN STREET, MONCTON

<b>Size</b>	+/- 15,000 sf	<b>Details</b>	High profile commercial land in the heart of downtown
<b>Price</b>	\$149,000	<b>Agent(s)</b>	Donna Green

# LAND FOR SALE

CLICK ON THE PHOTO TO OBTAIN MORE INFORMATION ONLINE



## RECREATIONAL LAND FOR SALE, CAPE TORMENTINE

<b>Size</b>	+/- 3.23 acres	<b>Details</b>	Prime recreational land, adjacent to the NB Trail Network
<b>Price</b>	\$19,500	<b>Agent(s)</b>	Adam MaGee



## ST. GEORGE BOULEVARD AND WHEELER BOULEVARD LAND, MONCTON

<b>Size</b>	+/- 12.55 acres	<b>Details</b>	Prime development land with +/- 2,000' frontage on Wheeler Boulevard
<b>Price</b>	\$349,900	<b>Agent(s)</b>	Ian Franklin



## IVAN RAND DRIVE, MONCTON

<b>Size</b>	+/- 17 acres	<b>Details</b>	Prime development site near Downtown Event Centre. Zoned SC
<b>Price</b>	\$2,400,000	<b>Agent(s)</b>	Ian Franklin



## HWY 134, BATHURST

<b>Size</b>	+/- 40,472 sf	<b>Details</b>	Prime development site on HWY 134 with 200' of frontage
<b>Price</b>	\$9,500	<b>Agent(s)</b>	Adam MaGee



## BERRY MILLS DEVELOPMENT LAND, BERRY MILLS

<b>Size</b>	+/- 15.6 acres	<b>Details</b>	Development land in Berry Mills with Trans-Canada Highway exposure
<b>Price</b>	\$1,250,000	<b>Agent(s)</b>	Ian Franklin   Adam MaGee



## HIGHWAY DEVELOPMENT OPPORTUNITY, AMHERST, NOVA SCOTIA

<b>Size</b>	+/- 34 acres	<b>Details</b>	Development land with +/- 2,000 ft frontage on the Trans-Canada Highway
<b>Price</b>	\$525,000	<b>Agent(s)</b>	Adam MaGee



# SOLD & LEASED

A LIST OF PROPERTIES SOLD AND  
LEASED BY OUR BROKERAGE TEAM IN  
THE LAST 60 DAYS.

---

# SOLD AND LEASED PROPERTIES



## MAIN STREET & LORENTZ DRIVE DEVELOPMENT LAND, MONCTON

<b>Size</b>	+/- 2.8 acres	<b>Details</b>	Rare development opportunity minutes from Downtown Moncton
		<b>Agent(s)</b>	Adam MaGee



## 60, CHEMIN DE LA TRAVERSE, SAINT PAUL

<b>Size</b>	+/- 5,000 sf	<b>Details</b>	Open concept space suitable for a multitude of uses
<b>Price</b>	\$199,000	<b>Agent(s)</b>	Adam MaGee



## 1180 ST. GEORGE BOULEVARD, MONCTON

<b>Size</b>	+/- 4,126 sf	<b>Details</b>	2 <sup>nd</sup> floor office suite with natural light and open concept layout
		<b>Agent(s)</b>	Adam MaGee   Donna Green



## 206 PINE GLEN ROAD, RIVERVIEW

<b>Size</b>	Up to 500 sf	<b>Details</b>	Two private turnkey offices in great location with ample parking
<b>Price</b>	\$400-\$450/month Gross	<b>Agent(s)</b>	Donna Green



## 722 ACADIE AVENUE, DIEPPE

<b>Size</b>	+/- 2,200 sf	<b>Details</b>	Lower level flex commercial space in a bustling area of Dieppe
<b>Price</b>	\$7.00 psf Net	<b>Agent(s)</b>	Donna Green



## 725 CHAMPLAIN STREET, DIEPPE

<b>Size</b>	+/- 1,200 sf	<b>Details</b>	Warehouse space with dock level loading
<b>Price</b>	\$7.25 psf Net	<b>Agent(s)</b>	Adam MaGee



**Donna Green**  
Commercial Sales & Leasing  
506 387 6930 Direct  
506 866 1319 Mobile  
[dgreen@cwatlantic.com](mailto:dgreen@cwatlantic.com)



**Adam MaGee**  
Commercial Sales & Leasing  
506 387 6928 Direct  
506 872 2507 Mobile  
[amagee@cwatlantic.com](mailto:amagee@cwatlantic.com)



**Peter Ryan**  
Commercial Real Estate Advisor *\*License Pending*  
506 387 6920 Direct  
506 872 0921 Mobile  
[pryan@cwatlantic.com](mailto:pryan@cwatlantic.com)



**Ian Franklin, CCIM**  
Vice President  
506 387 6920 Direct  
506 863 7199 Mobile  
[ifranklin@cwatlantic.com](mailto:ifranklin@cwatlantic.com)



**Bill MacAvoy**  
Managing Director  
902 425 1872 Direct  
902 880 0445 Mobile  
[bmacavoy@cwatlantic.com](mailto:bmacavoy@cwatlantic.com)

[cwatlantic.com](http://cwatlantic.com)