

FOR LEASE  
720 Main Street  
Moncton, New Brunswick



Downtown Location

## Up to 4,500 SF Office Space Available For Lease

### Property Highlights

3 storey multi-tenant commercial building ideally located in the core of downtown Moncton.

- Prominent tenants include Cora's and Pink Sushi
- The 2<sup>nd</sup> floor office space has been completely renovated with new flooring, lighting and fresh paint
- Various space layouts and sizes flexible demising options
- Plenty of natural light
- Accessible building with wheelchair access and elevator service
- Front and rear access to the space
- Suitable for a variety of uses including call centre, research and development, office space, business centre and more



Lease Rate: \$17.00 psf Gross



Ample natural light throughout



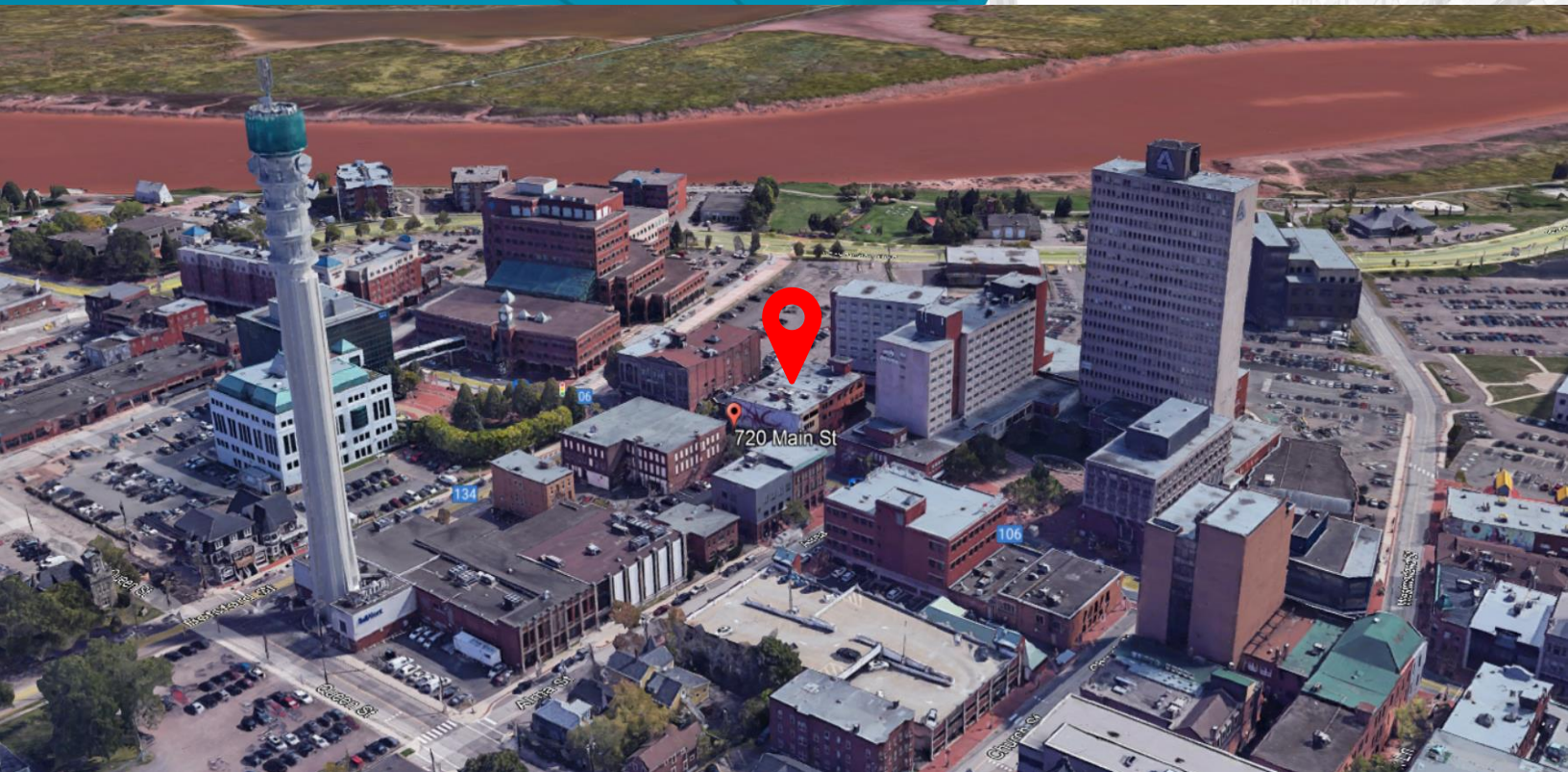
Elevator service



Surface parking on adjacent lot and metered street parking

### Contact

DONNA GREEN  
Associate Vice President  
+1 506 387 6930  
[dgreen@cwatlantic.com](mailto:dgreen@cwatlantic.com)



## Location Information



Walking distance from hotels, Assumption Place, banks, city hall, restaurants, coffee shops and the Avenir Centre.



Next to the hub of the city's major festivals and events with office views of the Avenir Centre.



Strategically located in the centre of downtown Moncton, and walking distance to Riverfront Park.



Nearby banks include TD Canada Trust, Scotiabank, RBC Royal Bank, BMO Bank of Montreal, National Bank and CIBC.



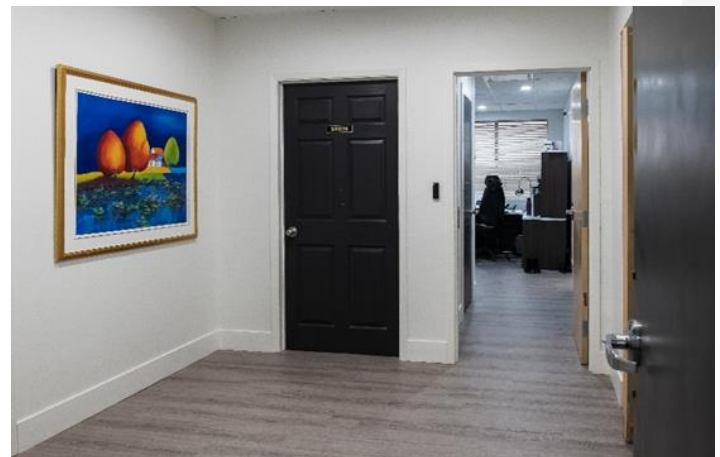
Local cafés and eateries include Café C'est La Vie, Cinta Ria, Vien Dong, Katch Seafood & Pizza Girls, K-CUPBOP, St. James Gate.



Access to the city transit route and stops

## Contact

**DONNA GREEN**  
Associate Vice President  
+1 506 387 6930  
[dgreen@cwatlantic.com](mailto:dgreen@cwatlantic.com)

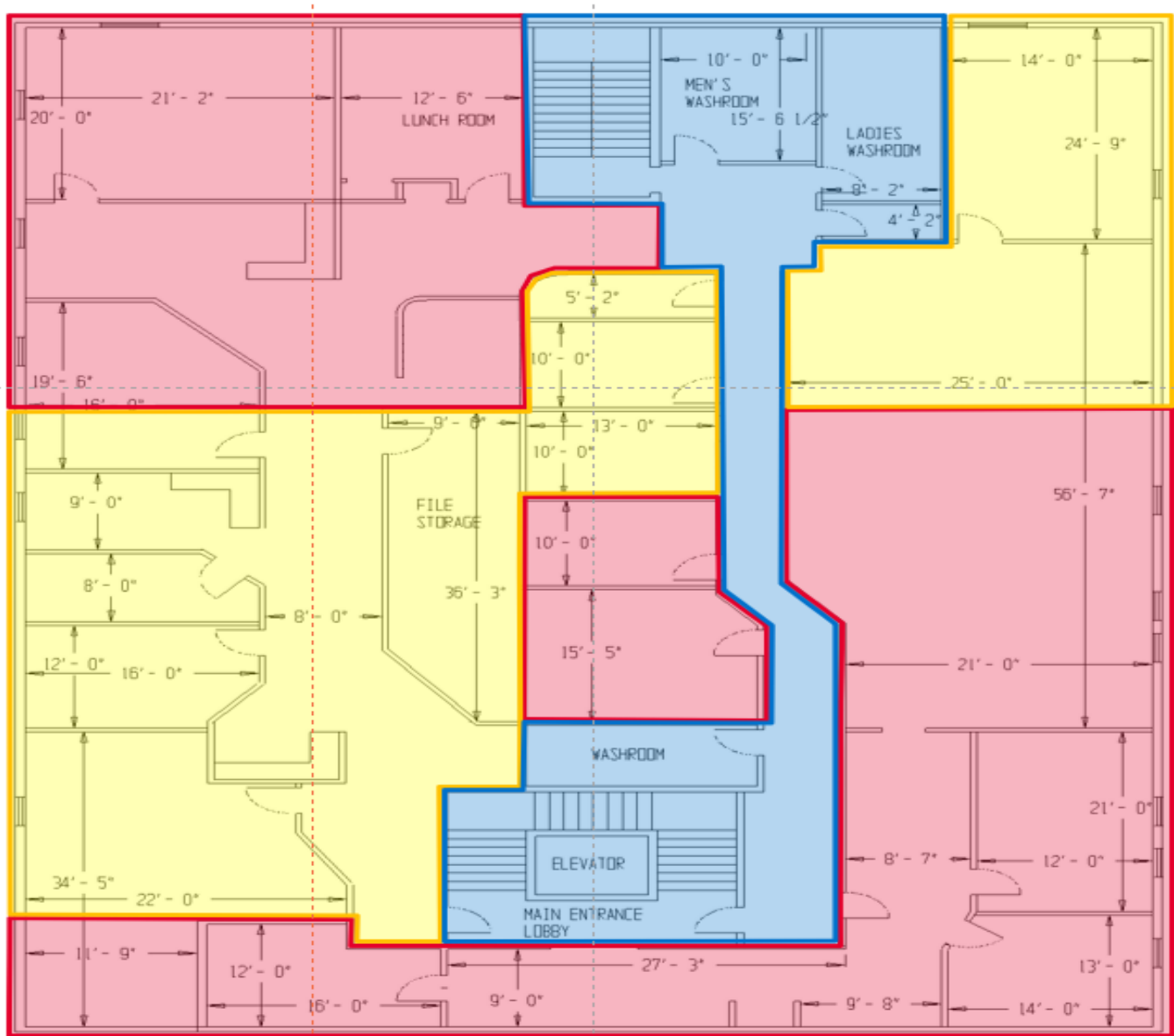


## Contact

DONNA GREEN  
Associate Vice President  
+1 506 387 6930  
[dgreen@cwatlantic.com](mailto:dgreen@cwatlantic.com)

Floor Plan – 2<sup>nd</sup> Floor

- Available Space
- Common Space
- Occupied Space



## Contact

**DONNA GREEN**  
Associate Vice President  
+1 506 387 6930  
[dgreen@cwatlantic.com](mailto:dgreen@cwatlantic.com)