

MULTI-USE INDUSTRIAL BUILDING



+/- 18,736 sf Large Multi-Use Industrial Building for Sale
Sale Price: \$560,000

Property Highlights

- Well located multi-use property available for sale just outside of the city limits
- The property was repurposed and expanded in 1984
- Property sits on a +/- 4.7 acres of cleared land
- Ideal for many uses including distribution, manufacturing, storage and much more
- Roof, siding and windows were new in 2008
- HVAC is a combination of mini-split, electric baseboard and recycled oil fired forced air
- Ceiling heights range from 16' to 18'
- 400 amp service entrance

Location Overview

- With both large cities of Moncton and Dieppe within a 15 minute drive of Lakeville, it makes this country side a great location for an industrial property outside of city limits
- Minutes away from the Greater Moncton International Airport, Lakeville Variety & Gas Bar, Petro Canada, Robin's Donuts and Lakeside Golf & Country Club. This property is also within close proximity to nearby industrial parks including the Caledonia Industrial Park and Dieppe Industrial Park



For more information, please contact:

Adam MaGee
Commercial Sales & Leasing
+1 506 386 6928
amagee@cwatlantic.com

32 Alma Street
Moncton, New Brunswick E1C 4Y1
+1 506 387 6925

Details

PID	70461421
PAN	03561178
Property Taxes (2018)	\$9,178.19

Property Description

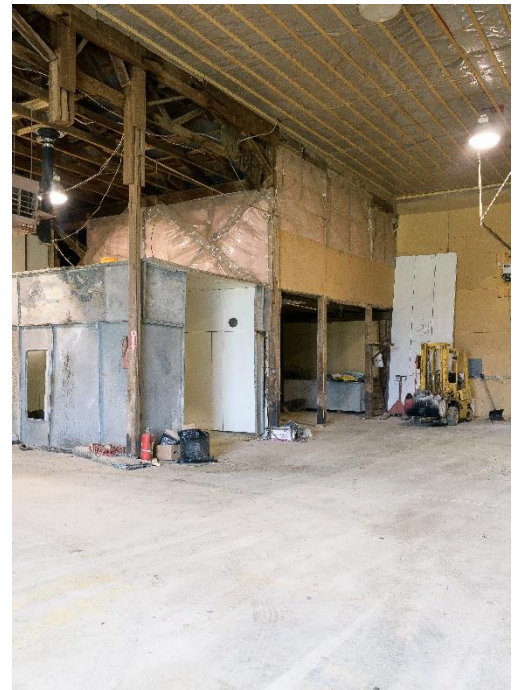
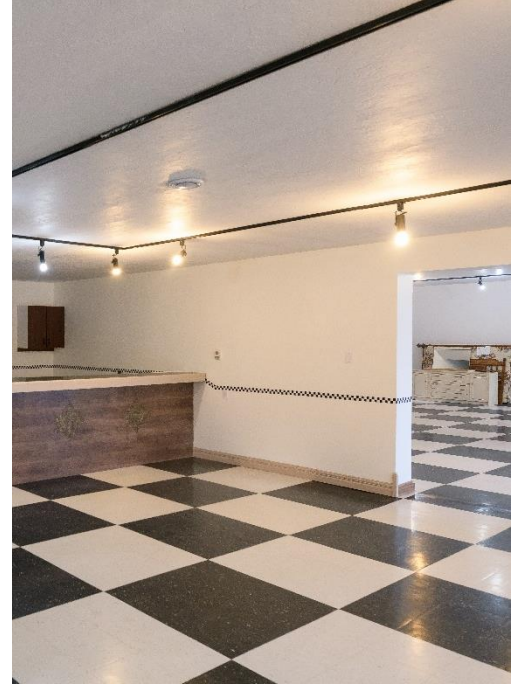
Details	
Foundation	Concrete
Year Built	1984 (renovated in 2008)
Size of Building	+/- 18,736
Frame	Wood frame
Roof	Metal (2008)

Details	
Exterior	Metal (2008)
Exterior Doors	Multiple grade level doors
Heating	Mini-splits, baseboards & oil
Electrical	400 amp entrance



Adam MaGee
 Commercial Sales & Leasing
 +1 506 387 6928
 amagee@cwatlantic.com

32 Alma Street
 Moncton, New Brunswick E1C 4Y1
 +1 506 387 6925
 cwatlantic.com



Adam MaGee
Commercial Sales & Leasing
+1 506 387 6928
amagee@cwatlantic.com

32 Alma Street
Moncton, New Brunswick E1C 4Y1
+1 506 387 6925
cwatlantic.com