



**OPEN CONCEPT
RETAIL SPACE**

+/- 8,310 sf Retail Building For Sale
Sale Price: Please Contact

Property Highlights

- Existing +/- 8,310 sf retail building with large storage capacity in the heart of Salisbury, New Brunswick
- The space features an open concept show room, staff area, ample parking and storage
- Storage structure features 2 floors and grade level loading
- Lot size: +/- 10,688 sf
- Ideal for a wide variety of commercial uses
- Excellent frontage on Main Street
- Ample onsite parking
- Property Tax (2019): \$3,966.96
- Zoning: Village Center
- PID: 00815340
- PAN: 02018229

Location Information

- Located just minutes off the Trans-Canada Highway in the commercial core of Salisbury
- Located on busy Main Street
- Salisbury is centrally located approximately 30 km west of the City of Moncton limits and the Town of Riverview
- Easy access to Moncton and Riverview, both approximately 15 minutes away
- Located within a 30 minute commute to the Greater Moncton Romeo Leblanc International Airport via Trans-Canada Highway #2 East.
- In close proximity to many amenities including grocery stores, dollar store, post office, gas stations, banking, pharmacy, bakery, day care, schools, green spaces and much more

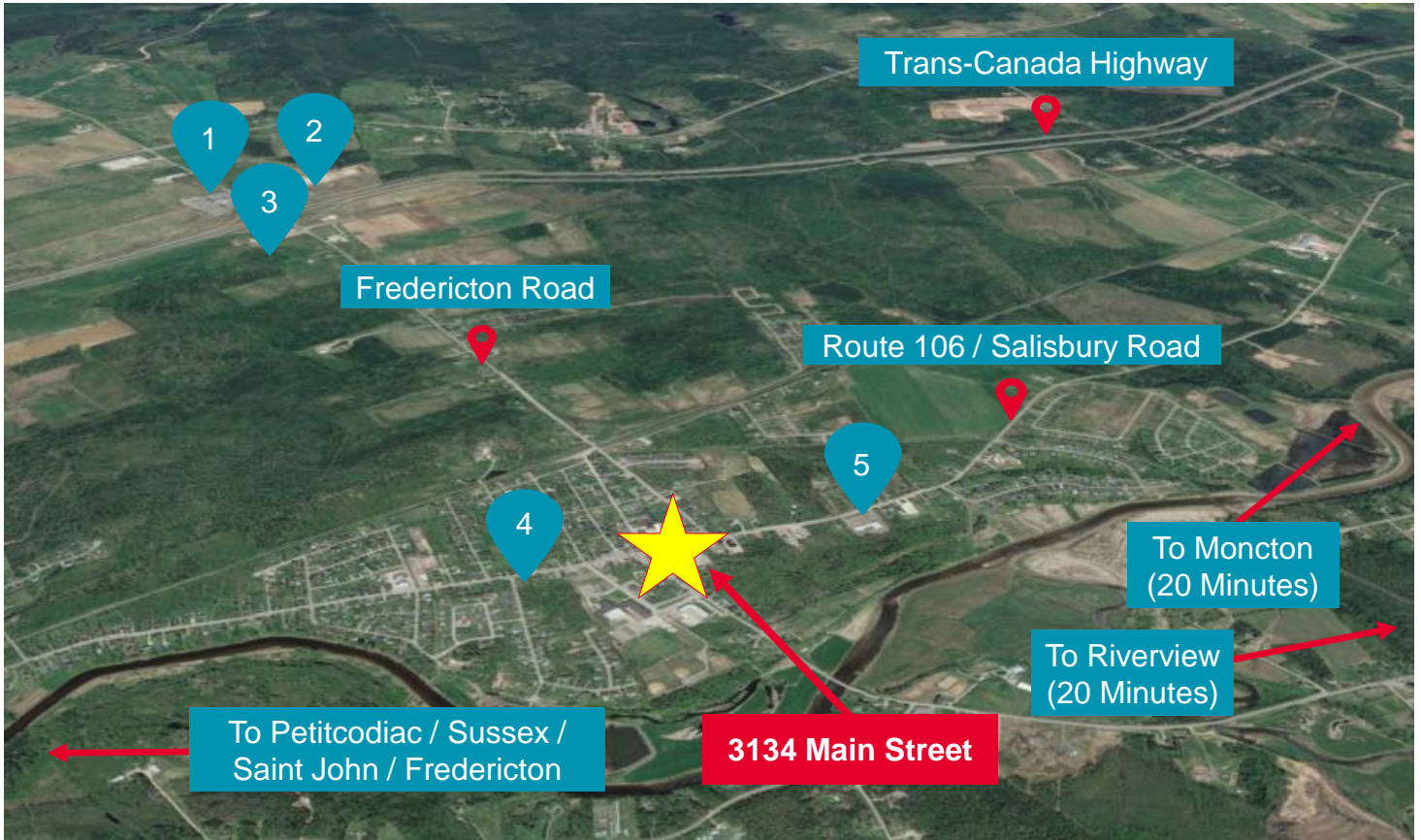


For more information, please contact:

Adam MaGee
 Commercial Real Estate Advisor
 +1 506 387 6928
 amagee@cwatlantic.com

32 Alma Street
 Moncton, New Brunswick E1C 4Y1
 +1 506 387 6925

Location Highlights



List of Nearby Retailers

1	Irving Big Stop / Tim Hortons / Subway
2	Alcool NB Liquor / Ultramar / Dairy Queen / Leisure Days RV Center / Valley Equipment
3	Shell / Sobeyes Express / A&W / Green Pig Country Market
4	Downtown Salisbury: Restaurants, Cafés, Banks, Post Office, Schools, and more
5	Sandy's Your Independent Grocer / Great Canadian Dollar Store