

MAIN AND 2ND FLOOR OFFICE



Main Floor- 3,447 sf
2nd Floor- 1,288 sf and 4,126 sf (Contiguous Space)

Property Highlights

- Professional two storey multi-tenant commercial building
- Various size units for lease
- Main floor space features wide open unfinished space
- 2nd floor spaces feature several large private offices, open concept areas, reception, boardrooms and kitchen
- Ample natural light
- On-site surface parking
- Ideal for professionals, contact centre IT firms and more

Location Overview

- Located in the Moncton Industrial Park, adjacent to Wheeler Boulevard, which provides fast, easy access to the Trans-Canada Highway. Centrally located with great exposure, minutes away from beautiful Centennial Park.

Additional Details	Lease Rate
Main Floor	\$10.00 psf Net
Second Floor	\$7.00 psf Net
Additional Rent	\$2.99 + heat & lights



Donna Green
Commercial Sales & Leasing
+1 506 387 6930
dgreen@cwatlantic.com

Ian Franklin, CCM
Vice President
+1 506 863 7199
ifranklin@cwatlantic.com

Adam MaGee
Commercial Sales & Leasing
+1 506 387 6928
amagee@cwatlantic.com

Sandra Paquet, BBA, AACI P. APP
Commercial Sales & Leasing
+1 506 387 6920
spaquet@cwatlantic.com

32 Alma Street
Moncton, New Brunswick E1C 4Y1
+ 1 506 387 6925



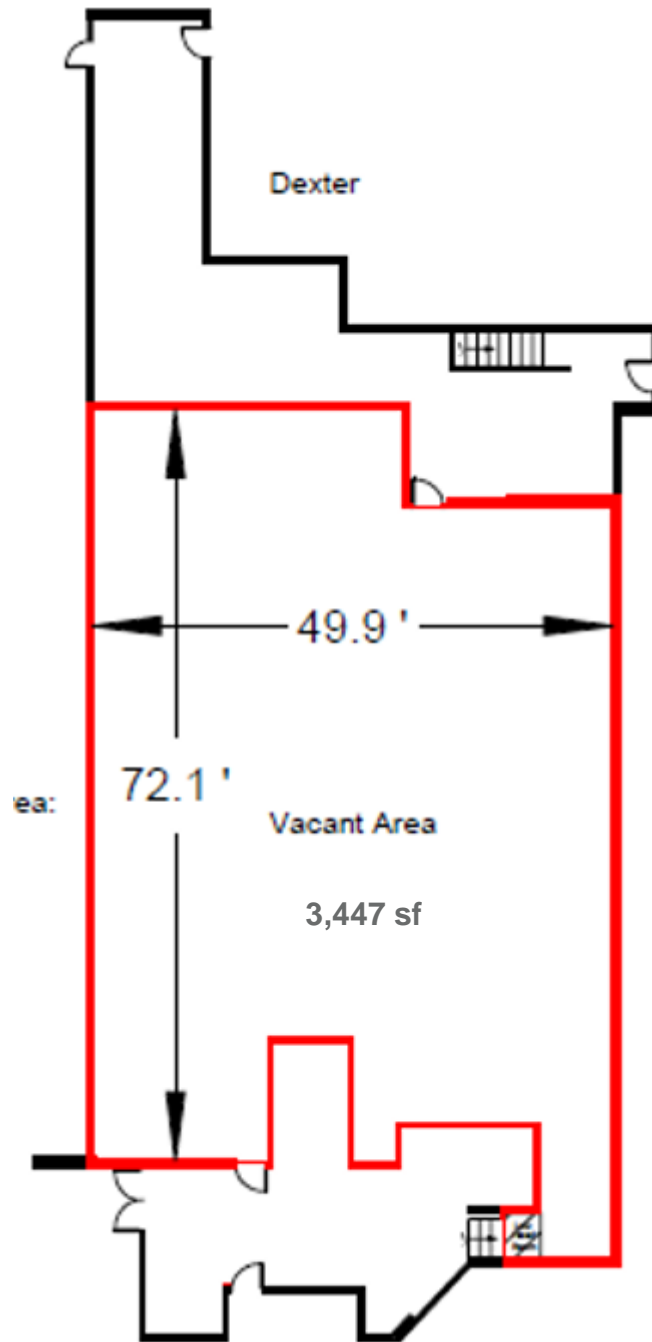
Donna Green
Commercial Sales & Leasing
+1 506 387 6930
dgreen@cwatlantic.com

Ian Franklin, CCM
Vice President
+1 506 863 7199
ifranklin@cwatlantic.com

Adam MaGee
Commercial Sales & Leasing
+1 506 387 6928
amagee@cwatlantic.com

Sandra Paquet, BBA, AACI, P. APP
Commercial Sales & Leasing
+ 1506 387 6920
spaquet@cwatlantic.com

Main Floor Unit Available -3,447 sf



Second Floor Units Available – 1,288 sf and 4,126 sf (Contiguous Units)

